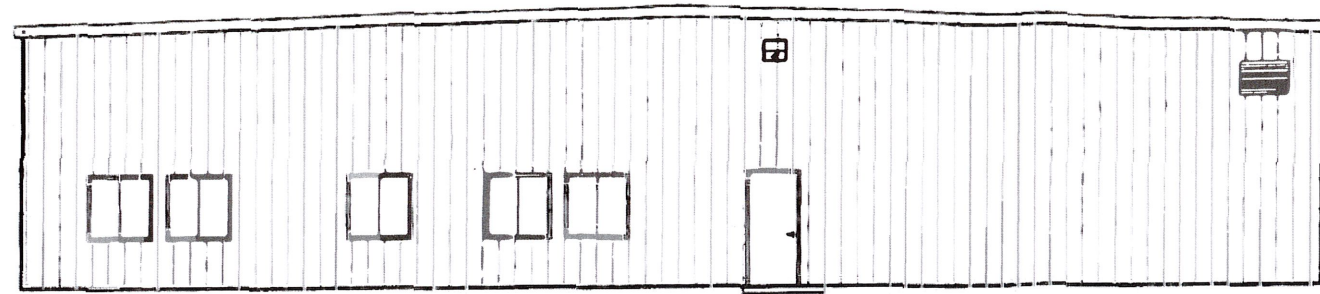
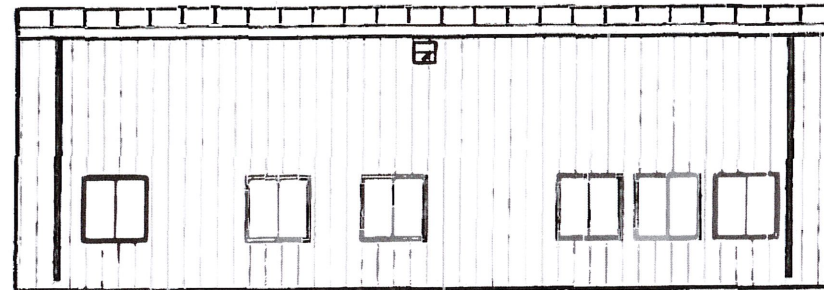


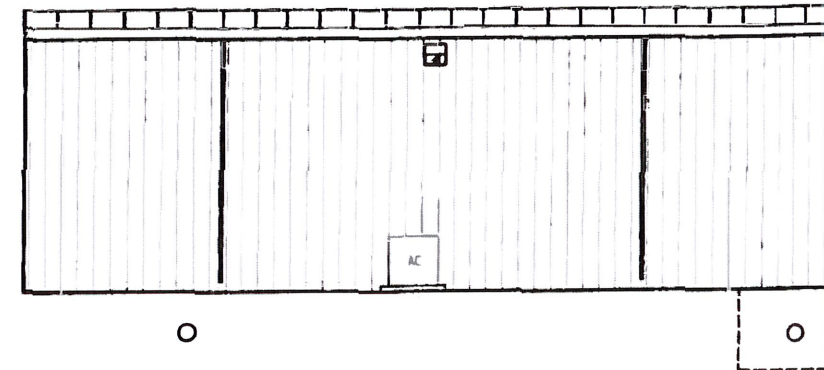
PROPOSED O&M BUILDING
 CONCEPTUAL DESIGN
 Baron Winds Project
 Steuben County, NY



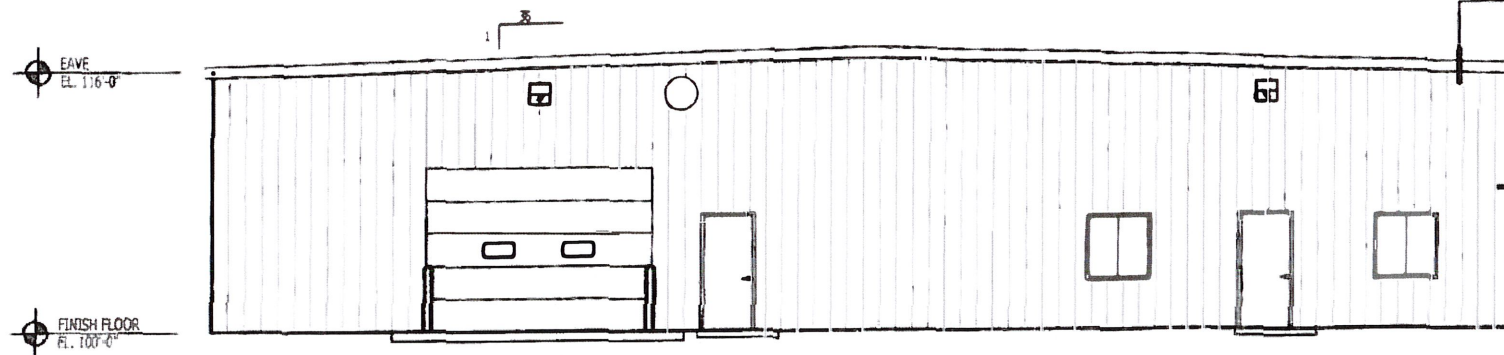
1 EAST ELEVATION
 A2.1 SCALE: 3/16" = 1'-0" (22X34)
 SCALE: 3/32" = 1'-0" (11X17)



2 SOUTH ELEVATION
 A2.1 SCALE: 3/16" = 1'-0" (22X34)
 SCALE: 3/32" = 1'-0" (11X17)



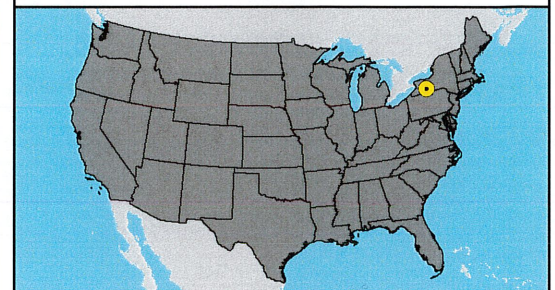
3 NORTH ELEVATION
 A2.1 SCALE: 3/16" = 1'-0" (22X34)
 SCALE: 3/32" = 1'-0" (11X17)



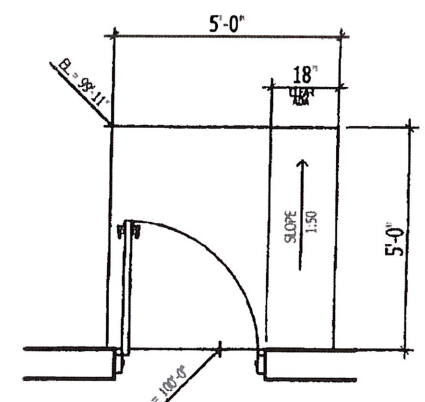
4 WEST ELEVATION
 A2.1 SCALE: 3/16" = 1'-0" (22X34)
 SCALE: 3/32" = 1'-0" (11X17)

- 24 GA. SSR METAL ROOF PANEL
 COLOR: GALVANIZED
- THERMAL BLOCK
- 8" PURLIN
- 3" F.G. INSUL. OVER PURLIN (R=10)
- 8" F.G. INSUL. BETWEEN PURLIN (R=24)
- 6 MILL VAPOR BARRIER
- 29 GA. NON PERFORATED LINER PANEL
 COLOR: WHITE
- 24 BL. VEE RIB METAL PANEL
 COLOR: COOL GRANITE GRAY
- 8" GIRT
- 8" F.G. INSUL. w/ V.B. (R=24)
- 6 MILL VAPOR BARRIER
- 29 GA. LINER PANEL / FURRING & GYP. BD

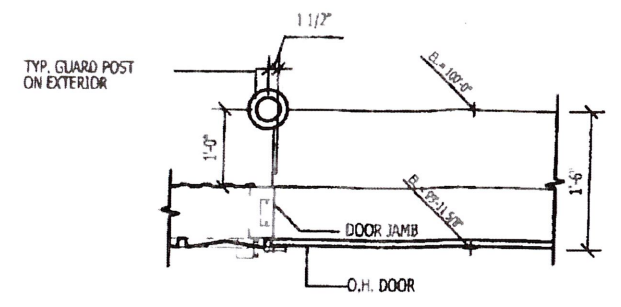
ROOF, WALL, & TRIM COLORS	
ROOF PANEL: SSR	COLOR: GALVALUME
WALL PANEL: VEE RIB	COLOR: COOL GRANITE GRAY
EAVE TRIM COLOR:	COOL COBALT BLUE
FRAMED OPENING COLOR:	COOL COBALT BLUE
CORNER TRIM COLOR:	COOL COBALT BLUE
BASE TRIM COLOR:	COOL GRANITE GRAY
DOWN SPOUT COLOR:	COOL GRANITE GRAY



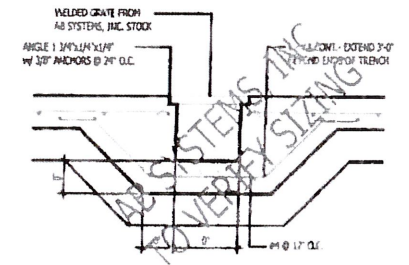
PROPOSED O&M BUILDING
 CONCEPTUAL DESIGN
 Baron Winds Project
 Steuben County, NY



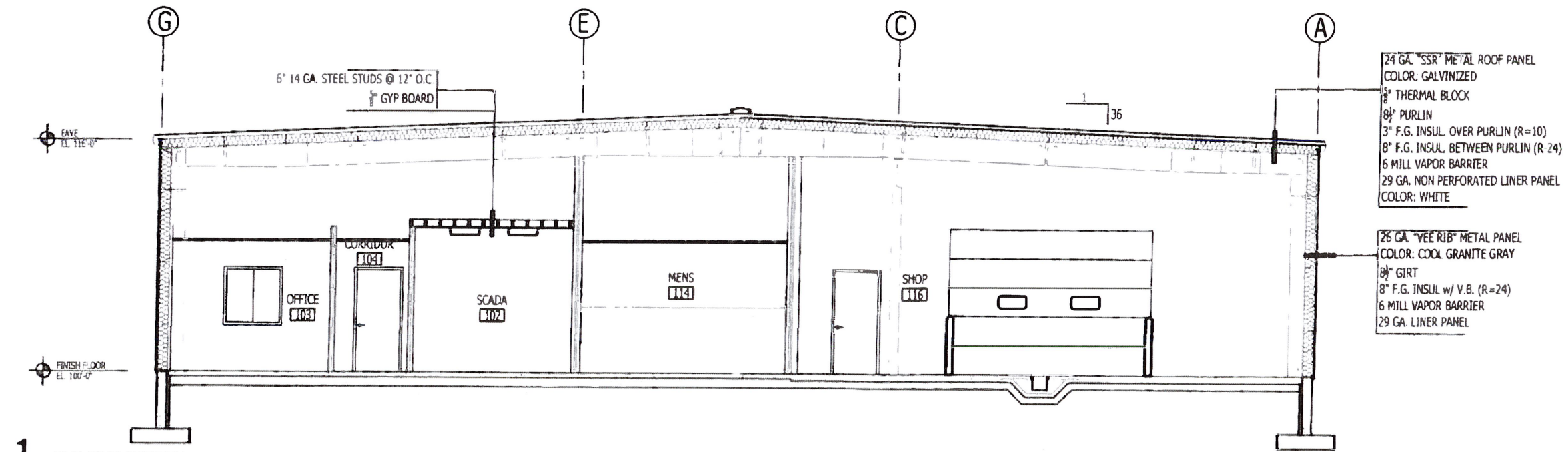
2 STOOP DETAIL
 A3.1 NOT TO SCALE



3 GUARD POST AT OVERHEAD DOOR
 A3.1 NOT TO SCALE

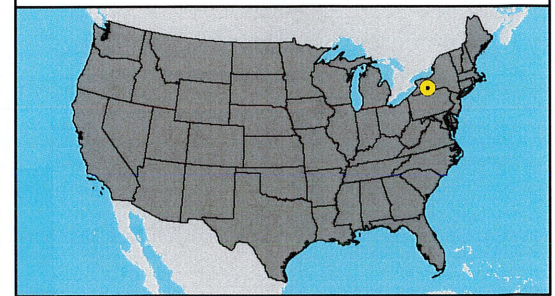


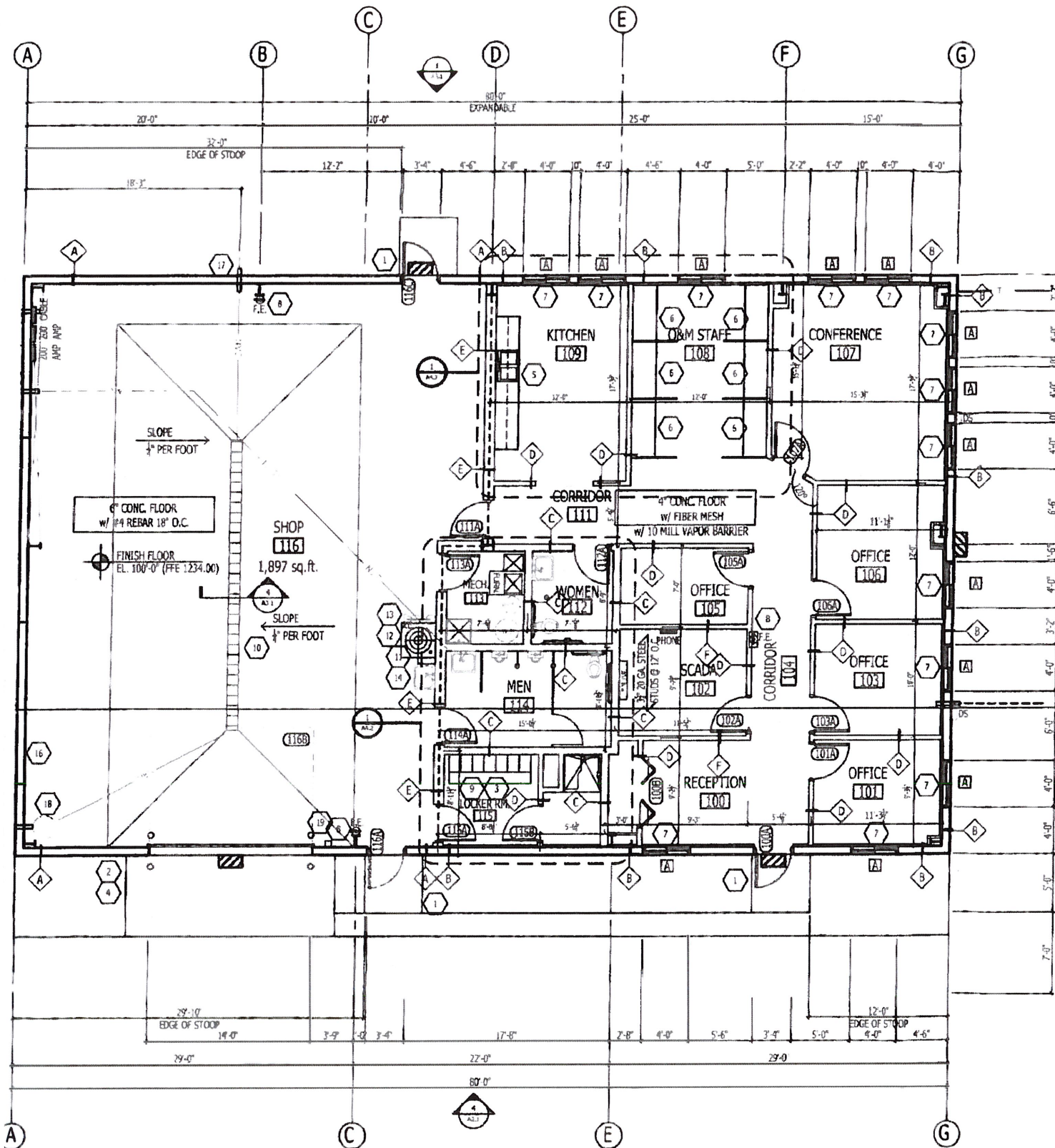
4 TRENCH DRAIN DETAIL
 A3.1 NOT TO SCALE



- 24 GA. "SSR" METAL ROOF PANEL
 COLOR: GALVANIZED
 - 1/2" THERMAL BLOCK
 - 8 1/2" PURLIN
 - 3" F.G. INSUL. OVER PURLIN (R=10)
 - 8" F.G. INSUL. BETWEEN PURLIN (R=24)
 - 6 MILL VAPOR BARRIER
 - 29 GA. NON PERFORATED LINER PANEL
 COLOR: WHITE
-
- 26 GA. "VEE RIB" METAL PANEL
 COLOR: COOL GRANITE GRAY
 - 8 1/2" GIRT
 - 8" F.G. INSUL. w/ V.B. (R=24)
 - 6 MILL VAPOR BARRIER
 - 29 GA. LINER PANEL

1 BUILDING SECTION
 A3.1 SCALE: 1/4" = 1'-0" (22/04)
 SCALE: 1/8" = 1'-0" (11/17)





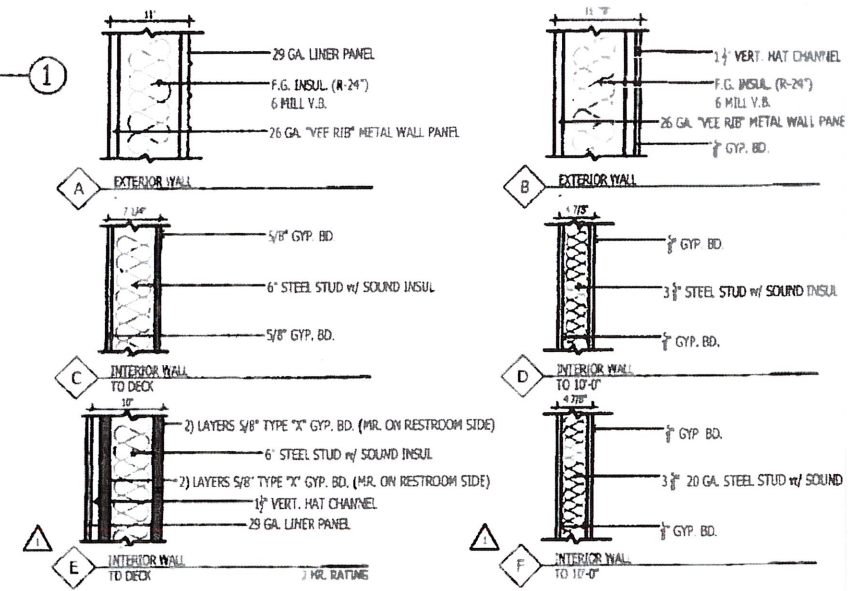
GENERAL NOTES:

- A. 4,000 SQ. FT. BUILDING
- B. BUILDING NOT SPRINKLED
- C. OFFICE FLOOR TO BE CURED DAILY
- D. SHOP FLOOR TO BE CURED & SEALED

KEY NOTES:

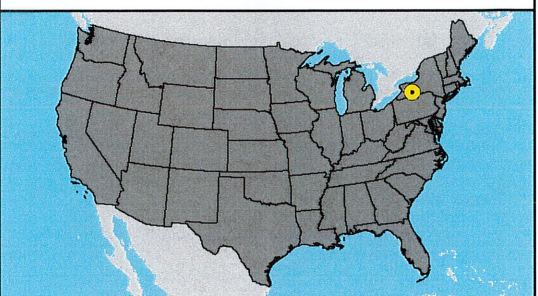
- 1 5' x 5' x 5" FROST FREE STOOP w/ #4 REBAR EACH WAY (SEE DETAIL 2/A3.1)
- 2 7' x 18' x 7" CONC. APRON w/ #4 REBAR EACH WAY
- 3 7' 12" x 18' x 5" LOCKERS w/ NO LEGS
- 4 (4) 6" DIA. GUARD POST, 48" ABOVE GRADE, 36" BELOW GRADE (SEE DETAIL 3/A3.1)
- 5 1 1/2" INJL. OF LAMINATE WALL & BASE CABINETS, w/ 1/2" INJL. OF LAMINATE COUNTER TOP (SEE ELEVATION ON 2/A3.1)
- 6 (6) PLASTIC LAMINATE COUNTER & DIVIDER
- 7 WINDOW SILLS TO FINISH WITH CORIAN (13 TOTAL)
- 8 (3) 5 LB. FIRE EXTINGUISHERS - (1) w/ WALL SEMI RECESSED CABINET IN OFFICE, (2) w/ WALL BRACKET IN SHOP
- 9 LOCKER ROOM BENCH BRACKET 7" INJL. (SEE DETAIL 5 / A3.1)
- 10 25' x 12" TRENCH DRAIN (SEE DETAIL 4/A3.1)
- 11 AC UNIT TO BE WALL HUNG
- 12 UTILITY SINK
- 13 EYE WASH
- 14 HAND SINK
- 15 SEWER - 4" SLEEVE / 24" BELOW FINISH FLOOR
- 16 WATER - 4" SLEEVE / 60" TO 72" BELOW FINISH FLOOR
- 17 FUTURE TRENCH DRAIN - 3" PIPE STUBBED OUT w/ 4" SLEEVE 8" BELOW FINISH FLOOR
- 18 FLUSHABLE WASTE - 6" SLEEVE, BOTTOM OF SLEEVE TO 27" BELOW FINISH FLOOR
- 19 LOCATION OF OVERHEAD DOOR OPENER

2 WALL TYPES:
A1.1

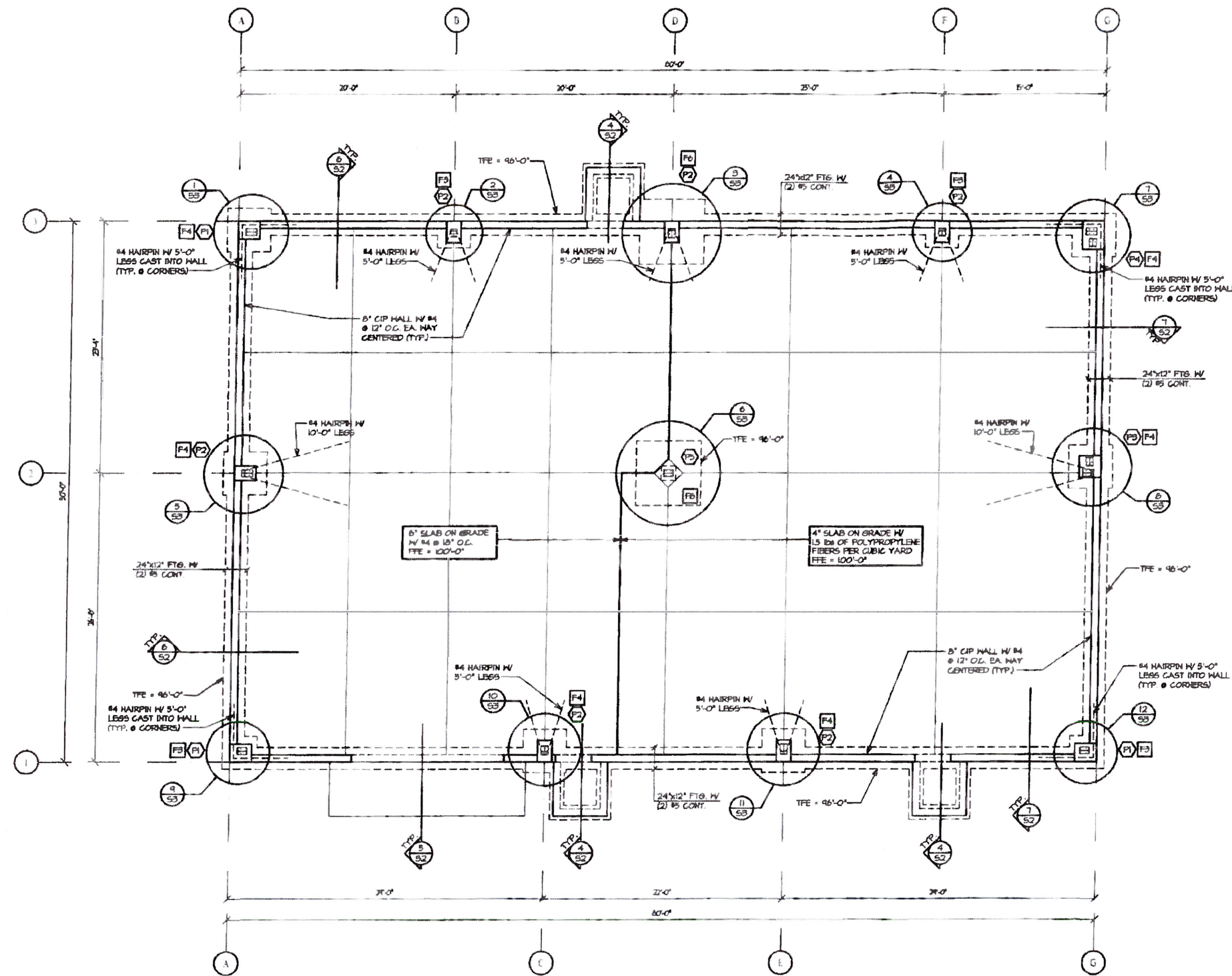


1 FLOOR PLAN

A1.1 SCALE: 3/16" = 1'-0" (22,330)
SCALE: 3/32" = 1'-0" (11,167)



PROPOSED O&M BUILDING
CONCEPTUAL DESIGN
Baron Winds Project
Steuben County, NY



NOTES:
 * CONTRACTOR TO INSTALL A SMOOTH FINISH ON TOP OF CONCRETE FOUNDATION WALL.
 * 1/2 INCH EXPANSION JOINT SHOULD BE PLACED BETWEEN THE OUTSIDE CONCRETE WALL AND THE FLOOR THAT IS POURED AGAINST IT. IT SHOULD BE APPROXIMATELY 1/2' DOWN THE TOP OF THE FLOOR SHOULD BE EDGED.
 * CONCRETE CONTRACTOR TO EDGE AROUND ALL PIERS AND BETWEEN CONCRETE FOUNDATION WALLS AND FLOOR.
 * SEE STRUCTURAL NOTES FOR CHAMBERS AT PROJECTING CORNERS OF SLABS, FOUNDATION WALLS, AND PIERS.

ANCHOR BOLT SCHEDULE

TOP OF CONCRETE OR GROUT	TOP OF CONCRETE OR GROUT
3/4" DIA. ANCHOR BOLT	1/2" DIA. ANCHOR BOLT
Fy = 36,000psi ASTM A36	

FOOTING SCHEDULE

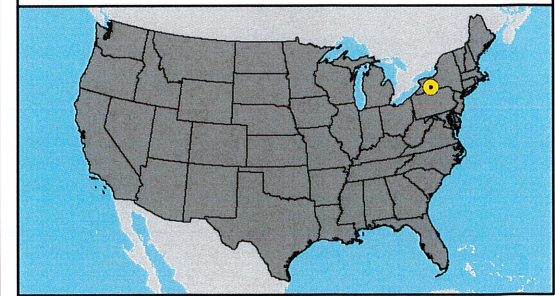
MARK	SIZE	REINFORCING
F3	3'-0" x 3'-0" x 12"	(3) #5 EACH WAY
F4	4'-0" x 4'-0" x 12"	(4) #5 EACH WAY
F5	5'-0" x 5'-0" x 12"	(5) #5 EACH WAY

PIER SCHEDULE

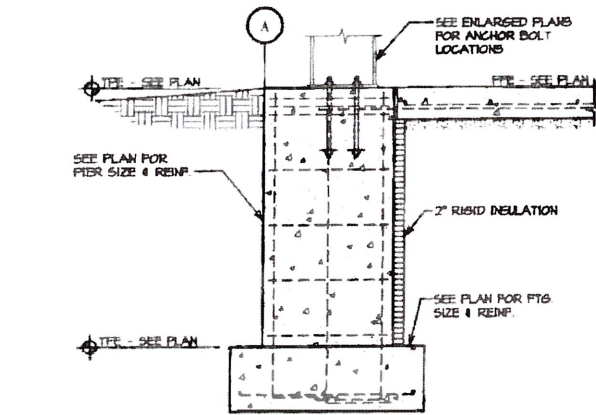
MARK	SIZE	DETAIL
P1	20"x24" CIP PIER W/ (2) #5 VERT. & 4 DIALS. TO FTG. & #5 TIES @ 10" O.C. ADD (3) ADDITIONAL TIES IN TOP 3" OF PIER (TIE = 100'-0")	
P2	18"x24" CIP PIER W/ (2) #5 VERT. & 4 DIALS. TO FTG. & #5 TIES @ 10" O.C. ADD (3) ADDITIONAL TIES IN TOP 3" OF PIER (TIE = 100'-0")	
P3	24"x24" CIP PIER W/ (2) #5 VERT. & 4 DIALS. TO FTG. & #5 TIES @ 10" O.C. ADD (3) ADDITIONAL TIES IN TOP 3" OF PIER (TIE = 100'-0")	
P4	24"x32" CIP PIER W/ (2) #5 VERT. & 4 DIALS. TO FTG. & #5 TIES @ 10" O.C. ADD (3) ADDITIONAL TIES IN TOP 3" OF PIER (TIE = 100'-0")	
P5	18"x36" CIP PIER W/ (2) #5 VERT. & 4 DIALS. TO FTG. & #5 TIES @ 10" O.C. ADD (3) ADDITIONAL TIES IN TOP 3" OF PIER (TIE = 95'-0")	

FOUNDATION PLAN
 1/4" = 1'-0"

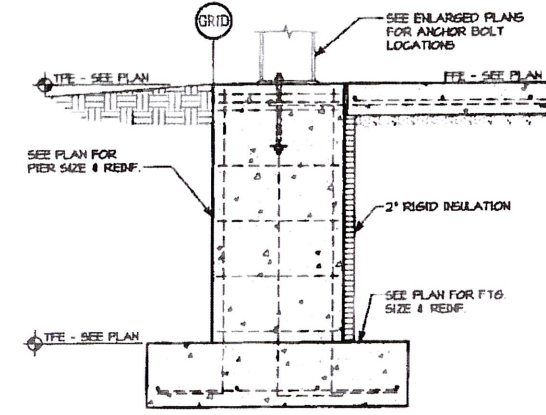
- TYPICAL UNLESS NOTED OTHERWISE:**
- FRESH FLOOR ELEVATION (FFE) = 100'-0"
 - FORM CONSTRUCTION JOINTS (C.J.) OR SAWCUT WITHIN 12 HOURS OF CONC. PLACEMENT - SEE 2/52
 - VERIFY ALL DIMENSIONS WITH ARCHITECTURAL DWS.
 - VERIFY ALL SIZES & LOCATIONS OF OPENINGS WITH ARCHITECTURAL DWS.
 - TOP OF FOOTING ELEVATION (TFE) - SEE PLAN
 - STEPPED FOOTING DETAIL - SEE 1/52
 - CONTRACTOR OPTIONS AT MECHANICAL & ELECTRICAL LINES BENEATH FOOTING - SEE 3/52



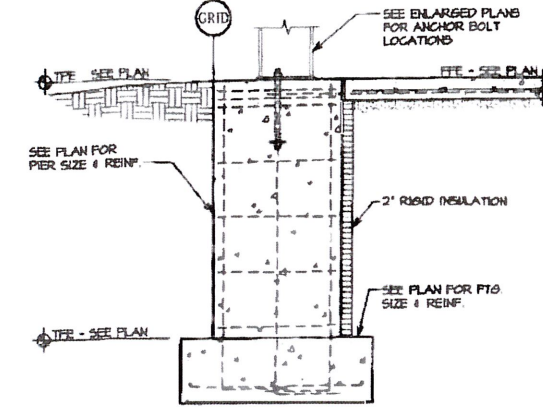
PROPOSED O&M BUILDING
 CONCEPTUAL DESIGN
 Baron Winds Project
 Steuben County, NY



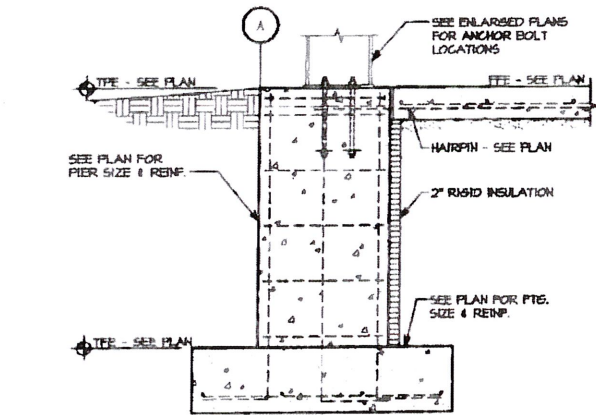
1 SECTION
 54 3/4" = 1'-0"



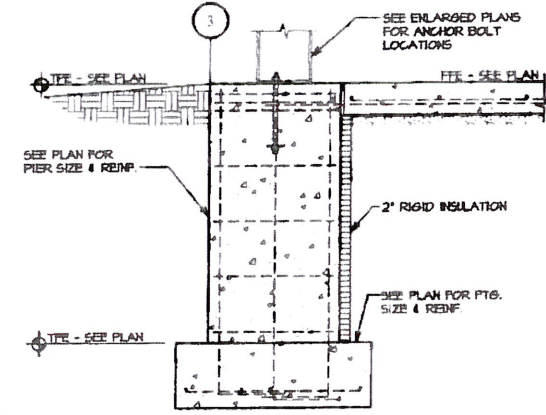
2 SECTION
 54 3/4" = 1'-0"



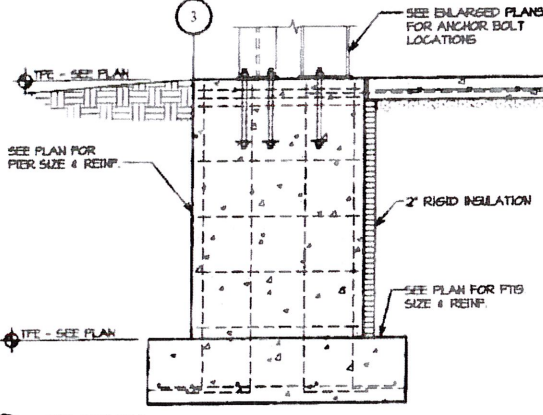
3 SECTION
 54 3/4" = 1'-0"



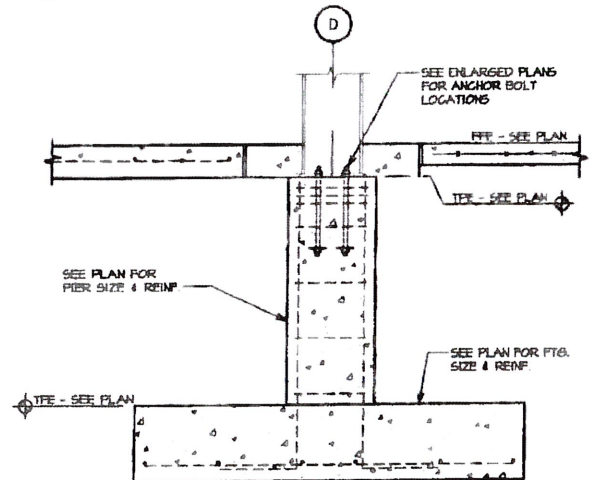
5 SECTION
 54 3/4" = 1'-0"



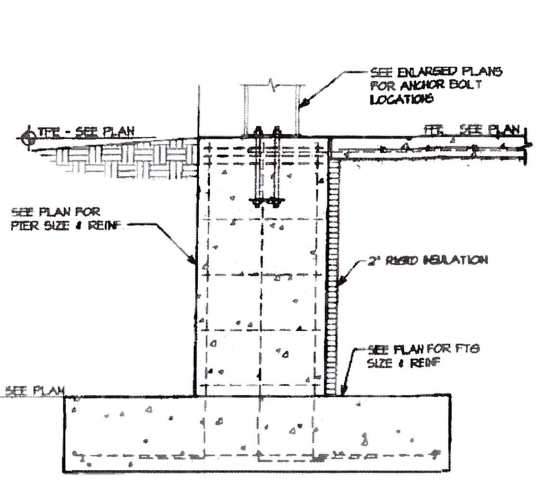
6 SECTION
 54 3/4" = 1'-0"



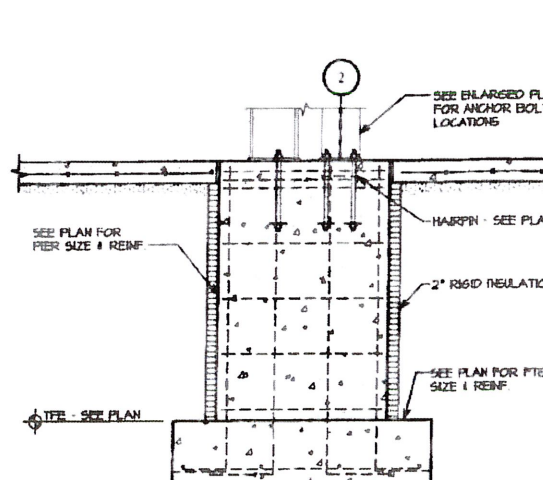
7 SECTION
 54 3/4" = 1'-0"



8 SECTION
 54 3/4" = 1'-0"



9 SECTION
 54 3/4" = 1'-0"



10 SECTION
 54 3/4" = 1'-0"

