



RWE Offshore US Gulf, LLC

Native American Tribal Communication Plan

Document Date: November 19, 2024

Document Number: 005444288-01

Revision Number: 04

Classification: Public

Lease OCS-G 37334 Company Number 15169

Gulf of Mexico OCS Region, Offshore Louisiana

Table of Contents

1.0	RWE Commitment to Tribes/Tribal Nations.....	1
2.0	Terms Used and Historical Context.....	1
3.0	Introduction.....	3
3.1	Company Background.....	4
3.2	Project Background.....	4
3.3	Project Setting.....	4
3.4	Affected Tribes/Tribal Nations.....	7
3.5	Tribal Fisheries.....	9
4.0	Shared Communication Approach and Strategy.....	9
4.1	RWE Contacts for Tribal Communications.....	10
4.2	Coordination with Gulf of Mexico Lease-Holders.....	10
4.3	Communications Plan Consistency.....	12
4.4	Project Phases and Engagement Activities.....	14
5.0	Process for Revising the NATCP.....	15
6.0	508 Compliance.....	16
7.0	References.....	16

List of Tables

Table 1.	Definitions.....	2
Table 2.	Tribe/Tribal Nation Key Points of Contact for NATCP.....	8
Table 3.	RWE Key Points of Contact for Tribal Engagement.....	10
Table 4.	NATCP Core Values.....	12
Table 5.	NATCP Engagement Activities.....	13
Table 6.	Project Updates on Possible Topics of Tribal Interest.....	14

List of Figures

Figure 1.	Location of RWE’s Offshore Wind Lease OCS-G 37334.....	6
-----------	--	---

List of Appendices

Appendix A Site Assessment and Characterization

Appendix B Project Design and Development of Construction and Operations Plans (COP)

Appendix C Environmental Assessments and Technical Reports

Appendix D Construction

Appendix E Operations and Maintenance (O&M)

Appendix F Decommissioning

Date	Version	Description of Changes
06/04/24	01	Original version provided to Tribes/Tribal Nation for review
08/29/2024	02	Updated version following comment period
11/01/24	03	Updated with BOEM comments and changes
11/19/2024	04	Issued as accepted by BOEM

List of Acronyms and Abbreviations

ACP	Agency Communication Plan
BOEM	Bureau of Ocean Energy Management
COP	Construction and Operations Plan
CPRA	Louisiana Coastal Protection and Restoration Authority
DENR	Louisiana Department of Energy and Natural Resources
DOTD	Louisiana Department of Transportation and Development
EIS	Environmental Impact Statement
FCP	Fisheries Communication Plan
ft	foot/feet
GW	gigawatt
HRVEA	Historic Resources Visual Effects Assessment
km	kilometer(s)
LA OIA	Louisiana Office of Indian Affairs
LCMP	Louisiana Coastal Management Programs
LDEQ	Louisiana Department of Environmental Quality
LDWF	Louisiana Department of Wildlife and Fisheries
MARA	Marine Archaeological Resources Assessment
m	meter(s)
mi	mile(s)
MOA	Memorandum of Agreement
NATCP	Native American Tribal Communication Plan
nm	nautical mile(s)
NOAA	National Oceanic and Atmospheric Administration
NEPA	National Environmental Policy Act
NHPA	National Historic Preservation Act
NOI	Notice of Intent
OCM	Office of Coastal Management
O&M	Operations and Maintenance

OCS	Outer Continental Shelf
POC	point of contact
ROD	Record of Decision
SAP	Site Assessment Plan
SHPO	State Historic Preservation Office
TARA	Terrestrial Archaeological Resources Assessment
TEK	Traditional Ecological Knowledge
TR	Tribal Representative
USACE	United States Army Corps of Engineers
USFWS	United States Fish and Wildlife Service
QMA	Qualified Marine Archaeologist

1.0 RWE Commitment to Tribes/Tribal Nations

RWE is committed to:

- Working with Tribes/Tribal Nations in a manner that recognizes and respects legal, constitutional, Treaty, and regulatory rights, as well as the lands and resources to which they apply,
- Recognizing and respecting Tribes'/Tribal Nations' rights, cultures, and values, and engaging in meaningful and mutually beneficial relationships,
- Promoting the inclusion of Tribal members and Tribal communities in our workforce and procurement practices,
- Partnering with Tribes/Tribal Nations on sustainability initiatives and economic development opportunities that are aligned with shared values and priorities, and
- Actively listening to Tribes/Tribal Nations when they choose to share information, knowledge, perspectives, and concerns.

2.0 Terms Used and Historical Context

RWE recognizes the appropriate terminology to use when referring to Native American people and groups can vary from region to region. This Native American Tribal Communication Plan (NATCP) will use the guidance provided by the National Museum of the Native American to determine the appropriate terminology, given that “Native Peoples often have individual preferences on how they would like to be addressed. To find out which term is best, *ask the person or group which term they prefer* [emphasis added]” (National Museum of the American Indian 2024). Thus, the terms “Tribe/Tribal Nation” are used to refer to governmental entities, and the term “Tribal member” to refer to individuals until and unless RWE is asked to adopt alternative terms that better reflect the preferences of Affected Tribes/Tribal Nations (defined in Table 1).

There are numerous legal distinctions between Tribes that are “federally recognized” relative to those that are not. Federally recognized Tribes are defined as sovereign nations that possess powers of self-governance (with certain exceptions) including the right to form their own governments, make and enforce laws, and to license and regulate activities within their jurisdictions (National Archives and Records Administration 2015, 2020). This federal-Tribal trust forms a government-to-government relationship that creates certain legally enforceable obligations and responsibilities on the part of the United States to persons who are enrolled members of such Tribes (Bureau of Indian Affairs 2024). The NATCP is considered part of Tribal engagement and is separate from government-to-government Tribal Consultation.

“Non-federally recognized” refers to those Tribes whose status have not been officially acknowledged by the United States government; this includes Tribes who may be in the process of petitioning for Federal acknowledgement, or Tribes with state-level recognition (as defined in 25 CFR Part 83 Subpart A §83.4).

For the purposes of this NATCP, we will engage with Affected Tribes/Tribal Nations who have an interest or historical connection to the project area. The inclusion of federally recognized Tribes/Tribal Nations is consistent with BOEM’s requirements and RWE has opted to expand engagement on this NATCP to include state recognized Tribes. RWE’s plans for engagement are separate from the formal Section 106 Consultation process between BOEM and Tribes/Tribal Nations.

Table 1 provides definitions of the terms that are used in this document, which have been adopted from federal and state and other sources. We note that some of these terms may not reflect Tribal preferences. Although many of the terms in Table 1 appear to be similar, there are subtle nuances that affect their usage. For example, the communications plan is titled by BOEM as referencing “Native American” Tribes, which refers specifically to groups that *may be eligible* for funding and services provided by the US government because of their status as Indians. The term “Federally recognized” refers to groups that have applied for and received formal recognition of their status and *are eligible* for funding and services from the Bureau of Indian Affairs.

Table 1. Definitions

Term	Definition
Affected Tribes/Tribal Nations	The 22 Tribes/Tribal Nations identified as having ancestral or potential ancestral ties to the geographical area of the Project. This includes federally recognized Tribal governments and non-federally recognized Louisiana Tribes identified by the Louisiana Office of Indian Affairs. The Affected Tribes/Tribal Nations is focused specifically on those groups with a self-reported connection to or interest in south Louisiana or the northwest Gulf region.
Federally recognized	An entity listed on the Department of the Interior’s list under the Federally Recognized Indian Tribe List Act of 1994 ¹ , which the Secretary currently acknowledges as an Indian Tribe and with which the United States maintains a government-to-government relationship.
Indigenous Knowledge	As referenced in the White House memo issued November 30, 2022 ² , Indigenous knowledge is a systematic way of thinking applied to phenomena across biological, physical, cultural and spiritual systems. It includes insights based on evidence acquired through direct and long-term experiences and extensive and multigenerational observations, lessons and skills. It has developed over millennia and is still developing in a living process, including knowledge acquired today and in the future, and it is passed on from generation to generation. ³
Native American Tribe	A tribe, band, pueblo, nation, or other organized group or community of Indians, including an Alaska Native village that is recognized as eligible for the special programs and services provided by the United States to Indians because of their status as Indians (34 U.S. Code § 12133).

¹ <https://www.federalregister.gov/documents/2024/01/08/2024-00109/indian-entities-recognized-by-and-eligible-to-receive-services-from-the-united-states-bureau-of>

² <https://www.whitehouse.gov/wp-content/uploads/2022/12/OSTP-CEQ-ik-Guidance.pdf>

³ <https://www.inuitcircumpolar.com/icc-activities/environment-sustainable-development/Indigenous-knowledge/>

Term	Definition
Non-federally recognized	Tribal Governments exercising and claiming inherent sovereignty but that are not currently recognized as Tribal sovereign nations by the United States. This includes Tribes recognized by the state of Louisiana as defined in Revised Statute 46:2305 Native American Commission (2018).
Project Area	Geographic area consisting of the RWE offshore lease site (designated as OCS-G 37334), the export cable to shore (location to be determined), and the onshore point of interconnection (location to be determined).
Tribal member	An individual that is enrolled in a Tribe/Tribal Nation.
Tribe/Tribal Nation	For purposes of this Plan, a Tribe/Tribal Nation refers to a politically organized entity made of up Native Americans recognized as having a government-to-government relationship with the United States or that appears on the Louisiana Office of Indian Affairs list of Louisiana’s federally and state recognized Tribes. It does not distinguish recognition status, but is meant to inclusively refer to groups that organize themselves as a Tribe or a Tribal Nation.
Traditional Ecological Knowledge	A form of Indigenous Knowledge that addresses the complex relationships between people and the natural environment learned through direct experiences that have been accumulated and passed down through countless generations. A White House memo issued in 2022 states that “where appropriate Indigenous Traditional Ecological Knowledge should inform Federal decision making along with scientific inquiry.” ⁴
Tribal Trust Resources	Natural and other resources specified and implicit in treaties, statutes, and agreements, or lands or other resources held in trust by the United States for the benefit of Tribes or individual Tribal members, including land, water, timber, fish, plants, animals, and minerals.
Tribal Representative	Refers to Tribe/Tribal Nations designee to serve as a point of contact for RWE. This may be an elected official, staff, Tribal member, or other.

3.0 Introduction

RWE Offshore US Gulf, LLC (RWE) holds the lease, Outer Continental Shelf-Gulf of Mexico (OCS-G) 37334.⁵ Addendum “C” of the lease contains the specific terms, conditions, and stipulations that RWE must follow as leaseholder. Lease Addendum “C”, 3, details the specific requirements for engagement and communication throughout all stages of RWE’s Project.

The lease terms also require RWE to develop three specific plans to facilitate this engagement effort over the lifetime of the Project. The three plans are the Native American Tribal Communication Plan (NATCP) (refer to Addendum “C”, 3.1.2.2), the Agency Communications Plan (ACP) (Addendum “C”, 3.1.2.3), and the Fisheries Communications Plan (FCP) (Addendum “C”, 3.1.2.1).

The NATCP is written to fulfil Lease Addendum “C”, 3.1.2.2, which includes the requirement to develop a publicly available NATCP that outlines the process that RWE will use to formally communicate with and receive feedback from Affected Tribes/Tribal Nations. RWE is developing the NATCP in collaboration with Affected Tribes/Tribal Nations and the plan will be updated, as necessary, to reflect changes that occur over the life of the Project or based on feedback

⁴ <https://www.whitehouse.gov/wp-content/uploads/2021/11/111521-OSTP-CEQ-ITEK-Memo.pdf>

⁵ The executed lease can be found here: <https://www.boem.gov/renewable-energy/state-activities/lease-ocs-g-37334-rwe-offshore-us-gulf-llc>

received. Ongoing communications with Affected Tribes/Tribal Nations will ensure that lessons learned and best practices are incorporated into the NATCP on a regular basis.

RWE's three communications plans were developed simultaneously by a coordinated RWE team as they will necessarily involve overlapping engagements. The communications plans will also be consistent with any Survey Plan(s) that RWE develops, which is another type of plan described in Lease Addendum "C", 2.

Updated versions can be provided to interested parties in electronic form and will also be posted to the BOEM and RWE websites. The process for updating the plan is presented in Section 6.

A "Revision Summary" table is included above on page ii of RWE's communications plans to track changes over time. The Revision Summary table will provide a brief description of the changes that were made to the document and the dates of each revision.

3.1 Company Background

RWE, including its global affiliates, is one of the world's leading renewable energy companies that is driving the expansion of green energy in more than 20 countries on five continents. RWE has a goal of creating 65 gigawatts (GW) of clean energy by 2030. The United States is a key part of RWE's renewable energy goals and has a current capacity of approximately 9 GW, which includes onshore and offshore wind farms, onshore solar, battery storage facilities, hydropower, and biomass.

RWE is ranked second in the world in offshore wind, with 19 offshore wind projects in operation. It is becoming the fastest-growing offshore wind company in the U.S. after recent acquisitions of approximately 6 GW of seabed capacity in the Pacific and Atlantic oceans, and the Gulf coasts.

3.2 Project Background

In August 2023, RWE successfully secured the lease rights to an area off the coast of Louisiana as part of the Gulf of Mexico offshore wind lease auction. The area is designated as Outer Continental Shelf (OCS)-Gulf of Mexico 37334 (OCS-G 37334 [Figure 1]). The lease became effective on November 1st, 2023.⁶

3.3 Project Setting

The northern boundary of the lease site is approximately 36 miles (mi; 58 kilometers [km]; 31 nautical miles [nm]) offshore of Cameron Parish, Louisiana. It encompasses 102,480 acres of seabed in water depths ranging from 49 to 79 feet (ft; 15 to 24 meters [m]). If fully developed, the renewable energy capacity of this area is estimated at 2 GW, which could power more than 350,000 homes annually. The Project Area encompasses the lease site, the export cable corridor, and the onshore interconnection to the electric grid, which, except for the lease site, have not been determined. Engagement activities will occur throughout the life of the Project to

⁶ The executed lease can be found here: <https://www.boem.gov/renewable-energy/state-activities/lease-ocs-g-37334-rwe-offshore-us-gulf-llc>

share information with Affected Tribes/Tribal Nations and solicit input and feedback on proposed activities and plans.

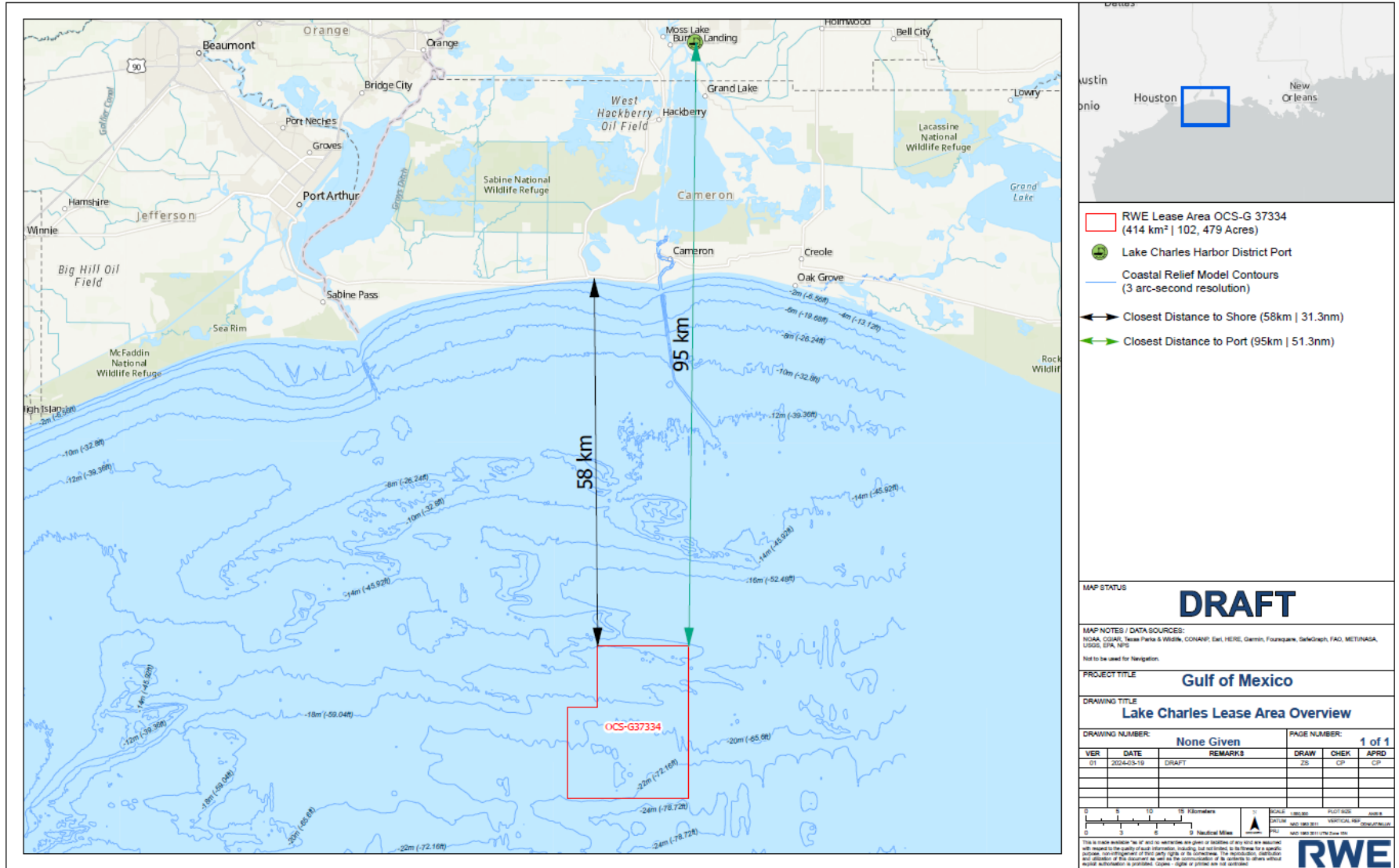


Figure 1. Location of RWE’s Offshore Wind Lease OCS-G 37334

The Project Area lies within federal waters of the Gulf of Mexico, and contains areas previously leased for oil and gas exploration and development. Multiple pipelines and wells are present within the Project Area. According to conversations with fishery participants and the siting analysis conducted by National Centers for Coastal Ocean Science and BOEM, reef fish and shrimp are the primary commercial fisheries that overlap with the Lease Area. Most of the shrimp fishing occurs inshore of the Lease Area, within 20 NM from shore. Additional commercial fisheries that occur inshore of the Lease Area include blue crabs, menhaden, oysters, and coastal finfish (spadefish, sheepshead, red drum, black drum, etc.). Commercial fishing for pelagic species (mackerels, amberjacks, tripletail, etc.) and highly migratory species (tunas, swordfish, billfishes, and sharks) occurs in deeper waters, south of the Lease Area.

3.4 Affected Tribes/Tribal Nations

Appendix C, Section 3.1.2.2 of RWE's offshore wind lease requires that, as the lease holder, they must invite Tribes/Tribal Nations with cultural and/or historical ties to the lease area to participate in development of the NATCP. Further, Section 3.1.2.2 stipulates that, "If a Tribe does not respond to outreach from the Lessee, the Lessee must continue to invite the Tribe to participate in NATCP engagement opportunities until the Tribe provides a written response to the Lessee or Lessor." The lease does not define how Tribes/Tribal Nations are to be identified for inclusion in NATCP development, therefore, RWE undertook a stakeholder mapping exercise to identify invitees and locate current contact information.

There are 22 Tribes/Tribal Nations, both federally recognized and non-federally recognized, that have been identified as having ancestral ties to or a potential interest in the Project Area, which encompasses the RWE wind lease site and possible cable corridors and interconnections to shore.

We refer to these 22 Tribes/Tribal Nations collectively as 'Affected Tribes/Tribal Nations.' While additional Tribes/Tribal Nations may request to be added to engagement efforts, current engagement efforts have targeted only the Affected Tribes/Tribal Nations listed in Table 2. RWE's identification of Affected Tribes/Tribal Nations (Table 2) was informed by BOEM and the Louisiana Office of Indian Affairs (LA OIA). RWE will include any additional federally recognized Tribes upon request by the Tribe to RWE's Tribal Relations Consultant.

RWE has shared communications, including a written invitation to engage, the project area lease map, and the draft NATCP with all 22 Tribes/Tribal Nations listed in Table 2, which were identified by both federal (BOEM) and state agencies (LA OIA) as directed by BOEM. Affected Tribes/Tribal Nations were contacted initially by phone and/or email to confirm the information for the most appropriate point of contact and confirm the preferred method of contact. Where phone calls or emails went unanswered, or information was unavailable, hard copies of the invitation to engage and draft NATCP were sent by certified mail. Follow up phone calls and emails have been made to all Affected Tribes/Tribal Nations. We will include the consultation policies of Affected Tribes/Tribal Nations as Appendix G, where applicable to RWE engagement; to date, no consultation policies have been provided. If or when consultation or engagement policies are provided, an Appendix G will be added to the NATCP.

Table 2. Tribe/Tribal Nation Key Points of Contact for NATCP

Tribal Nation/Tribe	Point of Contact	State
<i>Federally recognized Tribes</i>		
Chitimacha Tribe of Louisiana	Kim Walden	Louisiana
Coushatta Tribe of Louisiana	Kristian Poncho	Louisiana
Jena Band of Choctaw	Johnna Flynn	Louisiana
Tunica-Biloxi Tribe of Louisiana	Earl Barbry, Jr.	Louisiana
Quapaw Tribe of Oklahoma	Billy Burtrum	Oklahoma
Mississippi Band of Choctaw Indians	Melanie Carson	Mississippi
Alabama Coushatta Tribe of Texas	Delvin Johnson Janelle Batisse	Texas
Caddo Nation	Jonathan Rohrer	Oklahoma
Choctaw Nation of Oklahoma	Lindsey Bilyeu	Oklahoma
Seminole Nation of Oklahoma	Ben Yahola	Oklahoma
Seminole Tribe of Florida	Tina Marie Osceola	Florida
<i>Non-federally recognized Tribes</i>		
Adai Caddo Indians of Louisiana	John Mark Davis	Louisiana
Bayou Lafourche Band of BCCM	Quincy Verdun	Louisiana
Choctaw-Apache Tribe of Ebarb	Thomas Rivers	Louisiana
Clifton Choctaw Tribe of Louisiana	Brian Neal	Louisiana
Four Winds Cherokee	Len Wiggins	Louisiana
Grand Caillou/Dulac Band of BCCM	Devon Parfait	Louisiana
Jean Charles Choctaw Nation	Deme M. Naquin, Jr.	Louisiana
Louisiana Band of Choctaw	2 Eagles	Louisiana
Natchitoches Tribe of Louisiana	Fred Simon	Louisiana
Pointe au Chien Tribe	Charles Verdin, Sr.	Louisiana
United Houma Nation	Lora Ann Chaisson	Louisiana

3.5 Tribal Fisheries

The Fisheries Team will work with RWE's Tribal Relations Consultant to identify Tribes/Tribal Nations with an interest in the region's fishery resources and to gain a deeper understanding of the role of fisheries in the heritage of Tribes/Tribal Nations and the current and historical participation in commercial, recreational and Tribal fisheries. Survey plans developed ahead of any physical, biological or cultural resource surveys will be consistent with the Project's three communications plans.

4.0 Shared Communication Approach and Strategy

RWE is committed to early, often, and meaningful engagement with Tribes/Tribal Nations as outlined in the NATCP, but also in ways that are unrelated to lease or permitting requirements, as preferred and agreed to by the Tribes/Tribal Nations. RWE recognizes that values, cultures, and processes are unique for each Tribe. Tribal engagements offer an opportunity for RWE to learn about these unique differences and to approach discussions in culturally appropriate and respectful ways to build lasting relationships with Tribes/Tribal Nations and inform Project development. RWE believes that these working relationships will strengthen as trust and mutual understanding are built between RWE and the Affected Tribes/Tribal Nations. The NATCP details the procedures and protocols that RWE will use to formally engage with Tribes/Tribal Nations, share Project information, and solicit feedback from Tribes/Tribal Nations to develop a Project that avoids, minimizes, and/or mitigates impacts to environmental, social, and cultural resources. Through appropriate communication, coordination, and collaboration efforts, as described in Table 5, RWE endeavors to avoid or minimize conflicts.

The NATCP specifically concerns communications and activities that occur outside of the formal Consultation process, which is a government-to-government interaction between the lead federal agency (BOEM) and federally-recognized Tribes. Engagement activities developed as part of the NATCP will be tailored to meet the information needs of audiences while respecting the need to keep sensitive cultural information confidential, such as the locations of cultural resources. If any Tribe/Tribal Nation prefers to meet individually with RWE, separate meetings will be conducted.

4.1 RWE Contacts for Tribal Communications

RWE has designated the following individuals as points of contact (POC) for questions or comments on this document and for general inquiries related to Tribal engagement. Tribes/Tribal Nations may also direct any other questions or inquiries outside of Tribal engagement to the points of contact in Table 3.

Table 3. RWE Key Points of Contact for Tribal Engagement

Title	Name	Email	Phone
Senior Permitting Manager	Amanda Mayhew	amanda.mayhew@rwe.com	804-536-8002
Louisiana Permitting Manager	Tershara Matthews	tershara.matthews@wsp.com	228-351-9663
Tribal Relations Manager	Dillon Turman	dillon.turman@rwe.com	617-784-8974

RWE’s Tribal Relations Consultant will serve as the primary point of contact responsible for communicating a wide range of information to the Tribes/Tribal Nations from the various RWE teams and providing feedback from the Tribes/Tribal Nations to RWE to inform Project decision-making. The purpose of designating a primary point of contact is to better facilitate communication between RWE and Tribes/Tribal Nations. Alternative points of contact are provided in the event the Tribal Relations Consultant is not available.

The Tribal Relations Consultant is responsible for implementation of all aspects of the NATCP including, but not limited to, the following:

- Facilitating communication between Affected Tribes/Tribal Nations and RWE;
- Preparing meeting materials (agendas, presentations, meeting summaries, etc.);
- Coordinating and leading in-person and virtual engagement meetings;
- Tracking action items and follow-up engagements and activities;
- Providing regular updates to Tribes/Tribal Nations; and
- Answering questions from Tribes/Tribal Nations regarding the Project and its activities, and conversely providing insight into Tribal concerns, recommendations, and perspectives to RWE.

4.2 Coordination with Gulf of Mexico Lease-Holders

RWE is also required to coordinate, to the extent practicable, with other Gulf of Mexico leaseholders on engagement activities, if or when additional leases are awarded. Lease OCS-G 37334 was the only lease awarded in the first Gulf of Mexico renewable energy lease sale in August 2023. BOEM’s Renewable Energy Leasing Schedule for the five-year period starting May 1, 2024 included plans for potential Gulf of Mexico offshore wind lease sales in late 2024, 2025, and 2027.⁷ The 2024 lease sale was cancelled but RWE will continue to monitor future Gulf of Mexico lease sale notices. If or when future Gulf of Mexico offshore wind leases are issued, RWE will contact the lease holders to coordinate

⁷ <https://www.boem.gov/renewable-energy/rels-information-sheet-handout>

engagement activities. RWE anticipates coordination efforts with future leaseholders would potentially include joint meetings as well as other methods of coordination to minimize duplication of activities and reduce the burden of participation on Tribes/Tribal Nations.

4.3 Communications Plan Consistency

As noted in Lease Addendum "C", 3, it is expected there will be Tribes/Tribal Nation agencies or agency staff listed in this NATCP that will also be identified within RWE's FCP and ACP. Agencies or agency staff may be involved in the review of one or more other plans (e.g., survey plans, monitoring plans, contingency plans, etc.). RWE recognizes that the development of an offshore wind project requires input from many stakeholders with various interests. Any input provided on the Project by the agencies, including any inconsistencies across Project plans, will be noted by RWE and addressed across the full Project spectrum. Likewise, RWE expects that any staff or subject matter expert that is providing support to one of the agencies listed, will maintain close coordination and communication with that agency's POC(s) to ensure consistency.

Table 4. NATCP Core Values

Core Value	Description
Communication	Throughout the Project lifecycle, the NATCP will provide RWE and Tribes/Tribal Nations with opportunities to exchange information, opinions, and recommendations to create an open and honest dialogue. RWE will share information about Project development, activities, and invite discussion on how these activities might affect Tribes/Tribal Nations, both positively and negatively. RWE understands that not all information can be shared, and will work with each Tribe/Tribal Nation to protect and keep information confidential as requested. Tribes/Tribal Nations will have opportunities to share their opinions, perspectives, beliefs, Traditional Ecological Knowledge, scientific research, and concerns about Project development and make recommendations on how to avoid, minimize, and/or mitigate impacts to important environmental and cultural resources, as well as to discuss potential partnering, economic development, and/or investment opportunities between RWE and Tribes/Tribal Nations.
Coordination	The NATCP will provide RWE and the Tribes/Tribal Nations with opportunities to coordinate their activities to reduce potential ocean user conflicts and share the benefits of offshore wind development. Coordination could include working discussions between RWE and Tribes/Tribal Nations to provide opportunities for Tribal participation in pre-survey, survey, and post-survey activities.
Collaboration	The NATCP will provide opportunities for RWE and Tribes/Tribal Nations to evaluate and discuss potential Project impacts and work together to develop measures, plans, and procedures to avoid, minimize, and/or mitigate Project impacts on environmental and cultural resources. In addition, the NATCP will provide opportunities for Tribes/Tribal Nations and RWE to identify and collaborate on economic, social, and environmental projects and investments to improve the local environment and provide educational and economic opportunities for Tribe/Tribal Nation members.
Respect	Affected Tribes/Tribal Nations have historical knowledge of the complex relationships between people and the natural environment learned through direct experience and passed down through generations which should be taken into consideration. RWE respects and acknowledges the importance of this Traditional Ecological Knowledge and how it can be used to improve Project development and avoid or minimize adverse impacts to resources. RWE endeavors to have respectful, open, and transparent communication with Tribes/Tribal Nations, to receive input and feedback from Tribes/Tribal Nations, and to use that input/feedback to avoid or minimize adverse impacts to the extent practicable.

RWE has incorporated these core principles in the development of the NATCP and through direct communication and feedback from Affected Tribes/Tribal Nations. RWE has met and will continue to meet with the Tribes/Tribal Nations to better understand their preferred types of engagements, the frequency of activities/meetings, and preferred meeting formats (i.e., in-person, virtual, email, etc.). Engagement protocols outlined in the following sections are preliminary and will be further refined as additional feedback is received.

As required by BOEM, the NATCP document must be made publicly available, but any sensitive communications or documentation shared by Tribes/Tribal Nations during

engagement activities will remain confidential and, if appropriate to be shared, RWE will use secure technology for any transfer of information. Likewise, RWE does not share confidential business information or proprietary data; however, RWE will consider sharing certain information with a requester, provided it is appropriate and relevant, it does not create a competitive disadvantage, and each party has signed a Non-Disclosure Agreement (NDA).

RWE will work with Tribes/Tribal Nations to develop appropriate engagement approaches that ensure Tribes/Tribal Nations remain informed of and can provide input into the Project through each of its proposed development cycles. Table 5 provides a summary of the types of engagement activities that RWE envisions might be the most useful in its strategy to communicate, collaborate, and coordinate with Tribes/Tribal Nations.

Table 5. NATCP Engagement Activities

Engagement Activity	Description
Virtual Meetings	<p>RWE will host virtual meetings for the Affected Tribes/Tribal Nations. These meetings will be open to all Tribal Representatives (TRs) and Tribe/Tribal Nation members as directed by Tribal governments. Multiple meetings are anticipated so that different meeting agendas can be developed for the protection of sensitive information. The meetings may include the following components:</p> <ul style="list-style-type: none"> • An opening statement by TRs and RWE; • Knowledge/information sharing sessions between TRs and RWE; • A question-and-answer session; and • A listening session where RWE will listen to concerns, recommendations, and feedback from TRs. <p>Final agendas for individual meetings will be developed, with input from Tribes/Tribal Nations, in advance of the meeting.</p>
Face-to-Face Meetings	<p>Representatives from RWE will attend face-to-face meetings with TRs, Tribal governments, and Tribe/Tribal Nation members. RWE will collaborate with the Tribes/Tribal Nations regarding the format and content of these meetings.</p>
Electronic Newsletter/Email Update	<p>RWE will periodically prepare and send a Project newsletter or email update to the TRs to provide them with updates on the status of the Project, major developments, regulatory activities, and information/updates on topics important to the Tribe/Tribal Nations. The newsletter will be delivered to TRs via email.</p>
Website Updates	<p>RWE will create and regularly update a Project website with information and news about the Project.</p>

During the engagement activities listed in Table 5, RWE will share information on the results of studies done in support of the Construction and Operations Plan (COP) on topics that the Tribes/Tribal Nations deem important, and with respect to protecting sensitive cultural information. Some possible topics are listed in Table 6 and will be further developed as the Project progresses. Tribes/Tribal Nations may also reference Traditional Ecological Knowledge (TEK) to inform adaptive management approaches, but it should not solely be utilized as supplemental information to corroborate “Western science.” RWE recognizes that the only way to effectively incorporate TEK into decision making is through discussions and consultation with Tribes/Tribal Nations (Jessen et al. 2022; Mistry 2009; Prabhakar and Mallory 2022).

Table 6. Project Updates on Possible Topics of Tribal Interest

Topics	
Environmental Justice	Marine and Terrestrial Archaeological Resources
Geological Resources	Visual Effects on Above Ground Historic and Traditional Cultural Properties
Water Quality	Site Characterization and Assessment Studies
Coastal and Terrestrial Habitats	Physical Oceanographic/Meteorological Conditions
Benthic and Shellfish Resources	Commercial and Recreational Fishing
Fish and Essential Fish Habitat	Marine and Coastal Land Uses
Marine Mammals	Marine Transportation and Navigation
Sea Turtles	Land Transportation and Navigation
Avian and Bat Species	Project Siting and Design Development
Visual Resources	Offshore and onshore site investigations
Recreation and Tourism	State and local government consultations
Workforce Development Initiatives	Procurement Opportunities
Compliance Activities/ Permits	Federal government consultation

4.4 Project Phases and Engagement Activities

Attached to this NATCP are six appendices representing each stage, in the order they occur, of an offshore wind project. Stage-specific appendices provide a breakdown listing the discrete actions that RWE will take to coordinate and engage with Affected Tribes/Tribal Nations. The six stage-specific appendices are:

- Site Assessment and Characterization (Appendix A),
- Project Design and Development of Construction and Operations Plans (COP) (Appendix B),
- Environmental Assessments and Technical Reports (Appendix C),
- Construction (Appendix D),
- Operations and Maintenance (O&M) (Appendix E), and
- Decommissioning (Appendix F).

The communication activities described in the appendices are intended to reach a wider group (if that is the Tribe/Tribal Nation’s desire) while still maintaining a single POC within each Tribe/Tribal Nation. It is anticipated that the primary contacts listed in Table 2 will be responsible for wider distribution of formal communications received from RWE as deemed appropriate by the Tribe/Tribal Nation.

The intent of this approach is to maintain an organized structure for transparency and awareness, while reducing bottlenecks for the distribution of Project updates or progress reports or to timely address pertinent issues.

The NATCP is meant to be a guide for RWE and the Affected Tribes/Tribal Nations to foster effective communications. If the NATCP is hindering engagements or the structure requires

modification to better accommodate an Affected Tribe's/Tribal Nation's needs, then that feedback should be communicated to the RWE Tribal Relations Consultant.

RWE is committed to an adaptive NATCP that is responsive to changing conditions of Project activities, as well as to an individual Tribe's/Tribal Nation's needs and resources. There will be stages of this Project that will require various levels of engagement and possibly different Tribal staff to be notified depending on the issues. The result may be fewer engagement activities during periods of low activity and more engagement activities during periods of increased activity. As a result, RWE will endeavor to tailor the types and frequency of engagement activities to each Tribe's/Tribal Nation's specific needs, their feedback to the flow of information, and to the issues requiring attention during the different Project stages and as the Project matures. This is intended to create a transparent process for interested parties and to allow for meaningful engagement.

5.0 Process for Revising the NATCP

RWE views the NATCP as a "living document" that will be modified throughout implementation to achieve the goal of effective communication, collaboration, and coordination between RWE and participating Tribes/Tribal Nations. The process for modifying the NATCP will embody the core principles of respect, communication, coordination, and collaboration between participants. The following process will be used to modify the NATCP.

1. RWE will amend the NATCP to include any federally recognized Tribe/Tribal Nation or Tribe/Tribal Nation that requests to be included in the NATCP.
2. At any time, a participating Tribe/Tribal Nation or RWE can propose modifications or amendments to the NATCP by submitting the proposed change(s) to the RWE Tribal Relations Consultant.
3. The RWE Tribal Relations Consultant will submit the proposed modification/amendment to Tribes/Tribal Nations for review and comment if the changes are material and substantive.
4. Tribes/Tribal Nations will have 30 days to review and comment on the proposed modification/amendment. Tribes/Tribal Nations may request a reasonable extension to accommodate their capacity or schedule.
5. After the close of the 30-day review and comment period RWE will share with Affected Tribes/Tribal Nations all comments received on the proposed modification/amendment, a response to the comments, and an updated NATCP, if necessary.
6. Tribes/Tribal Nations will have another 30 days for any final comments. If there are no additional comments, the revised NATCP is considered ready for posting and will be sent to BOEM for publication. If there are additional comments, RWE will consider these comments, make every reasonable effort to address concerns, finalize the revised NATCP, and submit it to BOEM for publication. Alternatively, RWE may request additional comments before finalizing the revised NATCP. Comments will be kept confidential and only the resulting, revised NATCP will be made available.
7. Once participating parties have received the revised NATCP document, RWE and participating parties will be responsible for implementing the revised NATCP.
8. An updated copy of the NATCP will be made public on the RWE Project website.

If any participating party decides to object to a modification/amendment accepted under the process outlined above, RWE will meet with the objecting party in hopes of developing a mutually agreeable solution to the objection.

6.0 508 Compliance

All documents prepared by RWE will be compliant with Section 508 of the Rehabilitation Act of 1973, codified at section 29 United State Code section 794d, as amended. This ensures that anyone with a disability has equal access to government information as contained on information and communications technology. Section 508 compliance allows BOEM to easily post documents on its website for accessibility. Information on how to create accessible digital products can be found at www.section508.gov/create.

7.0 References

- National Museum of the Native American. The Impact of Words and Tips for Using Appropriate Terminology: Am I Using the Right Word? Smithsonian. Website Accessed April 16, 2024. (<https://americanindian.si.edu/nk360/informational/impact-words-tips>)
- Bureau of Indian Affairs. 2024. What is Tribal Consultation? U.S. Department of the Interior, Bureau of Indian Affairs. Website accessed April 18, 2024 (<https://www.bia.gov/service/tribal-consultations/what-tribal-consultation#:~:text=A%20Tribal%20consultation%20is%20a,makes%20decisions%20on%20those%20proposals.>).
- Jessen, T.D., N.C. Ban, N. XEMFOLTW Claxton, and C.T. Darimont. 2022. Contributions of Indigenous Knowledge to Ecological and Evolutionary Understanding. *Frontiers in Ecology and the Environment* 20(2): 93–101, doi:10.1002/fee.2435
- Mistry, J. 2009. Indigenous Knowledges. *International Encyclopedia of Human Geography*. 2009:371-376.
- National Archives and Records Administration, Code of Federal Regulations. 2015. “Federal Acknowledgment of American Indian Tribes,” Bureau of Indian Affairs, Interior. Federal Register Vol. 80, No. 126, (Wednesday, July 1, 2015) Title 25 Chapter I Subchapter F Part 83, Subpart A: 37862. ([https://www.ecfr.gov/current/title-25/chapter-I/subchapter-F/part-83.](https://www.ecfr.gov/current/title-25/chapter-I/subchapter-F/part-83))
- National Archives and Records Administration. 2000. Executive Office of the President “Consultation and Coordination with Indian Tribal Governments” Federal Register, Vol. 65, No. 218 Thursday, November 9, 2000, Presidential Documents, Executive Order 13175 of November 6, 2000. (<https://www.federalregister.gov/documents/2000/11/09/00-29003/consultation-and-coordination-with-indian-tribal-governments>).
- Prabhakar, Arati, and Brenda Mallory. 2022. Guidance for Federal Departments and Agencies on Indigenous Knowledge [Memorandum]. Executive Office of the President of the United States. November 30, 2022. (<https://www.whitehouse.gov/wp-content/uploads/2022/12/OSTP-CEQ-IK-Guidance.pdf>)

Appendix A

Site Assessment and Characterization

The Site Assessment/Characterization phase, which is anticipated to occur over three to five years, includes the following:

- Distribute a draft survey plan(s) for review and feedback; the survey plan will describe data collection efforts to inform Project engineering and archaeological investigations of the Project Area, which may include geophysical and or geotechnical survey methods.
- Submit final survey plan(s) to BOEM.
- Analyze archaeological survey data and prepare archaeological reports by a Qualified Marine Archaeologist.
- Perform initial studies and collect data on marine mammals, birds, benthic habitat, fish, and other marine resources in the Project Area.
- Prepare a site assessment plan (SAP) for buoy installation (if necessary) within the Lease Area to collect meteorological and/or oceanographic information.

The principal engagement goals during this phase are expected to include, but are not limited to:

- RWE to provide the Tribes/Tribal Nations with opportunities to review and comment on proposed site characterization surveys.
- Tribes/Tribal Nations to inform RWE if it has consultation policies that address the capacity of the Tribal Government to respond to or request feedback.
- RWE will coordinate a Tribal pre-survey meeting by sending a letter through certified mail to Affected Tribes/Tribal Nations, and by sending subsequent emails or making phone calls, as necessary. Tribes will be notified of the proposed meeting date no less than 15 days prior to the meeting, as required in Appendix C Section 5.5.4 of the offshore wind lease. The meeting itself will be held no less than 30 days prior to the start of the proposed survey operations.
- RWE to send notification of the Tribal pre-survey meeting to BOEM at least 15 calendar days prior to the date of the proposed Tribal pre-survey meeting.
- RWE and RWE's Qualified Marine Archaeologist will discuss the survey plan with interested Affected Tribes/Tribal Nations and consider requests to monitor portions of the archaeological survey and the geotechnical exploration activities, including the virtual visual logging and analysis of geotechnical samples (e.g., cores, etc.).
- Tribes/Tribal Nations will communicate their concerns, information requests, and recommendations to RWE to inform methods and objectives of site characterization surveys and studies.
- RWE and their site characterization survey and study contractors will coordinate with Tribes/Tribal Nations to identify and resolve potential conflict with Tribe/Tribal Nation members' use of resources.
- RWE and Tribes/Tribal Nations will discuss opportunities for collaboration during site characterization studies and surveys such as sharing knowledge or discussing potential opportunities for Tribe/Tribal Nation members to participate in activities.

- RWE to communicate the cultural findings of the various site characterization surveys and studies to the Tribes/Tribal Nations.

Table A-1 summarizes the engagement activities that are expected to take place during this phase depending on Affected Tribes'/Tribal Nations' preferences.

Table A-1 Site Assessment/Characterization Engagement Activities

Engagement Activity	Engagement Type	Description/Topics Discussed
Geophysical and Geotechnical Pre-Survey Meetings	Virtual Meeting	RWE to present and request feedback on its site assessment and survey plans.
Project Update Meeting	Virtual Meeting	RWE will host a regular virtual meeting open to Tribes/Tribal Nations to share Project development updates such as Project design and share and request feedback on site characterization study plans and results and answer questions. This will include a post-survey meeting with Tribes/Tribal Nations to review the collected data and cultural resources results.
Project Update	Email Newsletter and Website Updates	RWE to provide the Tribes/Tribal Nations with regular Project updates.
Progress Reports	Email	RWE will provide the Tribes/Tribal Nations with the semi-annual progress reports, which are required by BOEM, that list RWE's activities conducted between November 1 through April 30 and May 1 through October 31.
Meetings with Tribal/Tribal Nations	In-person meeting	RWE's Tribal Relations Manager will meet in-person with Tribes/Tribal Nations, as requested, to share Project updates, discuss Project development, identify ways to collaborate, answer questions, and receive Tribal government feedback.

Appendix B

Project Design and Development of Construction and Operations Plans (COP)

During this phase, RWE will analyze and review information collected during the Site Assessment phase to develop the Project’s COP, which describes how RWE will construct and operate a commercial offshore wind project in Lease Area OCS-G 37334. The COP will include a description of all planned facilities, as well as a description of proposed construction activities, commercial operations and maintenance, and conceptual decommissioning plans. The COP will summarize results of the site assessment phase, biological, environmental, geophysical, geotechnical, socioeconomic, and cultural resources studies; provide an assessment of the Project’s potential impacts; and include RWE’s proposed measures for avoiding, minimizing, reducing, eliminating, mitigating, and monitoring impacts. The COP is a publicly available document, however, sections of the COP related to culturally sensitive information such as locations of cultural resources, will not be made publicly available. RWE anticipates the COP Development phase will last one to two years following site assessment activities. The principal engagement goals during the COP Development phase are expected to include, but are not limited to:

- RWE will collaborate with the Tribes/Tribal Nations during studies conducted in support of the COP by providing opportunities to review and comment on study plans, such as the marine archaeological resources assessment (MARA), terrestrial archaeological resources assessment (TARA), historic resources visual effects assessment (HRVEA), and studies to evaluate potential impacts to marine species and the environment and terrestrial vegetation and wildlife species.
- RWE and Tribes/Tribal Nations will discuss opportunities for collaboration during studies conducted in support of the COP. This may include but not be limited to sharing data, sharing Traditional Ecological Knowledge, and discussing opportunities for Tribes/Tribal Nations or their members to participate in studies.
- RWE will communicate results of the COP studies and the Project’s potential impacts on environmental, social, economic, and cultural resources and will collaborate with Tribes/Tribal Nations to incorporate their perspectives, opinions, concerns, and recommendations into proposed measures to avoid, minimize, mitigate, and/or monitor Project impacts.

Table B-1 summarizes the engagement activities that are expected to take place during this phase depending on Affected Tribes’/Tribal Nations’ preferences.

Table B-1 COP Development Phase Engagement Activities

Engagement Activity	Engagement Type	Description/Topics Discussed
COP Survey/Studies Kick Off Meeting	Virtual meeting	RWE will host a virtual meeting to solicit feedback and recommendations on the studies and surveys RWE will conduct to support the COP.
Project Update Meeting	Virtual Meeting	RWE will host a regular virtual meeting open to Tribes/Tribal Nations to share Project updates including 1) Project development and results of COP surveys/studies on topics important to the Tribes/Tribal Nations, especially cultural resources survey results; 2) request for feedback on COP study/survey results; and 3) address any questions or concerns.
Project Update	Email/ Newsletter/ Website Update	RWE to provide Tribes/Tribal Nations with regular Project updates.
Progress Reports	Email	RWE will provide the Tribes/Tribal Nations with the semi-annual progress reports specified in the BOEM lease, which summarize RWE’s activities conducted during the reporting period.

Engagement Activity	Engagement Type	Description/Topics Discussed
Meetings with Tribal/Tribal Nations	In-person meeting	RWE's Tribal Relations Consultant will meet with Tribes/Tribal Nations to attend face-to-face meetings, as requested, to share Project updates, discuss Project development, identify ways to collaborate, answer questions, and receive Tribal feedback.

Appendix C

Environmental Assessments and Technical Reports

The Environmental and Technical Review phase begins when RWE submits the COP to BOEM. Once the COP is deemed sufficient and complete, BOEM will issue a Notice of Intent (NOI) under the National Environmental Policy Act (NEPA) to prepare an Environmental Impact Statement (EIS), which includes a minimum 30-day public scoping period. The NOI serves as the official notice that BOEM (as the lead agency) will conduct its environmental and technical reviews of the Project under NEPA. Any interested party (e.g., federal, state, and local agencies; Tribes/Tribal Nations; affected users; and members of the public) will have the opportunity to participate in a public scoping meeting(s) and provide feedback to BOEM on the issues and impacts to address in the EIS. BOEM (and cooperating agencies) will focus the analysis on significant issues and a reasonable range of alternatives. Once the draft EIS is complete, interested parties will have at least 45 days to review and comment. BOEM will host at least one public hearing during the 45-day comment period, to provide information about the draft EIS and an opportunity for participants to provide oral or written comments on the document.

BOEM will then publish a final EIS that addresses all of the comments received on the draft EIS, as well as any other pertinent updates. Following publication of the final EIS, anticipated to occur over two years, BOEM will decide whether to approve, approve with modifications, or disapprove the COP. BOEM's decision will be formalized in a Record of Decision (ROD), which completes the NEPA review process. The completion of BOEM's National Historic Preservation Act (NHPA) Section 106 review will either be incorporated into the ROD or conclude with a standalone Memorandum of Agreement (MOA) detailing how any adverse effects to historic properties will be resolved. The ROD will be followed by publishing the formal COP approval (if approved) that contains the requirements RWE must abide by when constructing, operating, and decommissioning the Project.

Once the draft EIS is available, RWE will also file a Coastal Use Permit application with DENR under Part 723 of the coastal management regulations. DENR uses a "Joint Application" form that may also be used to file the U.S. Army Corps of Engineers permit application under Section 10 of the Rivers and Harbors Act and/or Section 404 of the Clean Water Act. DENR will also submit the Joint Application to the following Agencies to further streamline the permitting process: OCM Permit Section, LCMP (if applicable), OCM Field Biologist, LA State Land Office, Louisiana Department of Wildlife and Fisheries, LDEQ, DOTD, CPRA, SHPO, Levee Boards, Local Parishes, NOAA Fisheries, and USFWS. Throughout this time, RWE will provide regular updates to the Agencies involved and seek feedback and recommendations on the applications through pre-application meetings.

The principal engagement goals during this phase are expected to include, but are not limited to:

- RWE will communicate with the Tribes/Tribal Nations listed in Table 2 to provide updates on proposed activities to support the environmental and technical reviews required by BOEM and other federal and state permitting agencies.
- RWE will respond to questions or information requests from Tribes/Tribal Nations and communicate responses and/or the requested information in a timely manner.
- RWE will coordinate with the Tribes/Tribal Nations and with BOEM/State of Louisiana to provide any information requested in support of government-to-government consultations.

- RWE will communicate and coordinate with BOEM, and other consulting parties, as requested, throughout the NHPA Section 106 review, providing relevant studies and reports, attending NHPA Section 106 meetings, answering questions, and responding to information requests.

Table C-1 summarizes the engagement activities that are expected to take place during this phase depending on Affected Tribes'/Tribal Nations' preferences.

Table C-1 BOEM Environmental and Technical Review Phase Engagement Activities⁸

Engagement Activity	Engagement Type	Description/Topics Discussed
Project Update Meeting	Virtual Meeting	RWE will host a regular virtual meeting open to Tribes/Tribal Nations to share Project updates such as the status of BOEM's NEPA and NHPA reviews; updates to relevant reports and studies based on NEPA/NHPA Section 106 review feedback; and, if necessary, the development of treatment plans to avoid, minimize, and/or mitigate adverse effects to historic properties.
Project Update	Email/ Newsletter/ Website Update	RWE to provide Tribes/Tribal Nations with regular Project updates.
Progress Reports	Email	RWE will provide the Tribes/Tribal Nations with the semiannual progress reports specified in the BOEM lease, which summarize RWE's activities conducted during the reporting period.
NEPA Public Meetings	Virtual and/or In-person meetings	RWE will attend and participate in the BOEM scoping and draft EIS public meetings. These meetings will be open to state and federally recognized Tribes/Tribal Nations and RWE understands some of these meetings could also serve as NHPA Section 106 consultation meetings per BOEM's regular use of the NEPA process for Section 106 purposes (36 CFR 800.8 (c)).
NHPA Section 106 Consultation Meetings	Virtual and/or In-person meetings	RWE will attend and participate in NHPA Section 106 consultation meetings organized by BOEM. Meetings will share and review findings of RWE's marine archaeological resources assessment (MARA), terrestrial archaeological resources assessment (TARA), historic resources visual effects assessment (HRVEA); presentation and discussion of BOEM's Finding of Effect; and discussion of proposed measures to resolve adverse effects (if necessary).

⁸ Engagement activities in Table C-1 would be in addition to any engagement conducted by BOEM under formal government-to-government Consultation, FAST-41, or other statutes under which Tribes/Tribal Nations may be invited to participate.

Appendix D Construction

During this phase, RWE will construct the proposed Project within the Project Area. Construction activities will be aligned with the requirements and conditions of the COP approval, including NHPA Section 106, that detail the compliance requirements for monitoring and reporting during Project construction. RWE anticipates it will take two to three years to construct the proposed Project.

The principal engagement goals during this phase are expected to include, but are not limited to:

- RWE will provide Project construction updates and the status of the various avoidance, minimize, and mitigation efforts/commitments to Tribes/Tribal Nations through construction.
- RWE will discuss with Tribes/Tribal Nations the potential for participation in environmental, social, and/or cultural resource mitigation and monitoring programs as defined in the Project COP Approval, ROD, NHPA Section 106 MOA, or any other agreements between RWE and Tribes/Tribal Nations.
- Communicate the results of construction phase environmental, social, and cultural resource monitoring reports.

Table D-1 summarizes the engagement activities that are expected to take place during this phase depending on Affected Tribes'/Tribal Nations' preferences.

Table D-1 Construction Phase Engagement Activities

Engagement Activity	Engagement Type	Description/Topics Discussed
Project Update Meeting	Virtual Meeting	RWE will host a regular virtual meeting open to Tribes/Tribal Nations to share Project construction updates.
Project Update	Email/ Newsletter/ Website Update	RWE will provide Tribes/Tribal Nations with regular Project updates.

Appendix E

Operations and Maintenance (O&M)

During this stage, RWE will operate, and perform routine maintenance on its offshore wind farm within the lease area as outlined in the approved COP. The initial operations term for the lease area is 33 years.

Actions During O&M

- RWE will comply with approved operational mitigation requirements and permit conditions.
- RWE will communicate regular updates to the Tribes/Tribal Nations on construction, operations, and maintenance activities on the lease site.
- RWE will communicate the findings of ongoing environmental, socio-economic, and cultural resources monitoring reports, as required, and will maintain the confidentiality of sensitive cultural information.
- RWE will summarize meetings and other actions in its semi-annual progress reports.
- RWE will maintain its website with current Project information including the current version of this NATCP.

Table E-1 summarizes the engagement activities that are expected to take place during this phase depending on Affected Tribes’/Tribal Nations’ preferences.

Table E-1 O&M Phase Engagement Activities

Engagement Activity	Engagement Type	Description/Topics Discussed
Communicate regular updates on construction, operations, and maintenance activities on the lease site.	Email/ Newsletter/ Website Update	RWE to provide Tribes/Tribal Nations with regular Project updates.
Provide Progress Reports	Email	RWE will provide the Tribes/Tribal Nations with the semi-annual progress reports specified in the BOEM lease, which summarize RWE’s activities conducted during the reporting period.
Communicate the findings of ongoing environmental, socio-economic, and cultural resources monitoring reports, as required.	Virtual and/or In-person meetings	RWE to provide Tribes/Tribal Nations with latest reports and findings.

Appendix F

Decommissioning

Toward the end of the Project’s life, RWE will submit a decommissioning plan to BSEE. BSEE and BOEM will review and determine whether to approve, disapprove, or approve with modifications the decommissioning plan. Once approved, RWE will decommission and remove its Project components per the approved decommissioning plan.

The principal engagement goals during this phase are expected to include, but are not limited to:

- RWE will share the proposed decommissioning plan with Tribes/Tribal Nations to receive input on Tribal concerns relating to environmental, social, and cultural resources impacts from Project decommissioning;
- RWE will communicate decommissioning planning updates to Tribes/Tribal Nations and, during decommissioning activities, provide updates on the status/progress of decommissioning works and any required environmental, social, and/or cultural resources monitoring programs.
- RWE will coordinate with Tribes/Tribal Nations to schedule decommissioning activities and associated vessel activities to avoid or minimize impacting or interfering with Tribes’/Tribal Nations’ uses of the ocean, coast, and lands near or adjacent to the Project Area, to the extent practicable.

Table F-1 summarizes the engagement activities that are expected to take place during this phase depending on Affected Tribes’/Tribal Nations’ preferences.

Table F-1 Decommissioning Phase Engagement Activities

Engagement Activity	Engagement Type	Description/Topics Discussed
Decommissioning Plan Review meeting	Virtual Meeting	RWE will host a meeting to review the Project decommissioning plan and solicit feedback from Tribes/Tribal Nations on their concerns and recommendations.
Project Update Meeting	Virtual Meeting	RWE will host a virtual meeting open to Tribes/Tribal Nations to share Project decommissioning updates.
Project Update	Email/ Newsletter/ Website Update	RWE to provide Tribes/Tribal Nations with regular Project updates.