

PUBLIC INVOLVEMENT PROGRAM PLAN

Cassadaga Wind Project
Chautauqua County, New York

Prepared For:



EverPower Wind Holdings, Inc.
1251 Waterfront Place, 3rd Floor
Pittsburgh, Pennsylvania 15222
Contact: Seth Wilmore
Phone: (412) 253-9419

Prepared By:



Environmental Design & Research,
Landscape Architecture, Engineering & Environmental Services, D.P.C.
217 Montgomery Street, Suite 1000
Syracuse, New York 13202
Contact: Ben Brazell
Phone: (315) 471-0688

January 2015

TABLE OF CONTENTS

1.0	INTRODUCTION	1
2.0	PROJECT DESCRIPTION.....	1
2.1	COMPANY PROFILE	1
2.2	PROJECT SUMMARY	2
2.3	STUDY AREA.....	3
3.0	IDENTIFICATION OF STAKEHOLDERS	4
3.1	AFFECTED STATE AND FEDERAL AGENCIES	5
3.2	LOCAL AGENCIES	5
3.3	HOST MUNICIPALITIES AND SCHOOL DISTRICTS	6
3.4	ADJACENT MUNICIPALITIES AND SCHOOL DISTRICTS	6
3.5	ADDITIONAL STAKEHOLDERS – BROADER AREA	7
3.6	HOST AND ADJACENT LANDOWNERS	7
3.7	PUBLIC INTEREST GROUPS	8
3.8	ENVIRONMENTAL JUSTICE COMMUNITIES THAT WILL BE AFFECTED BY THE PROPOSAL	8
4.0	LANGUAGE ACCESS	9
5.0	PROPOSED PUBLIC INVOLVEMENT PROGRAM	10
5.1	CONSULTATION WITH THE AFFECTED AGENCIES AND STAKEHOLDERS.....	11
5.2	PRE-APPLICATION ACTIVITIES TO ENCOURAGE STAKEHOLDER PARTICIPATION	12
5.3	ACTIVITIES TO EDUCATE THE PUBLIC ON THE PROPOSAL, PROCESS, AND FUNDING	14
5.3.1	Public Meetings.....	14
5.3.2	Educational Materials.....	15
5.4	WEBSITE	15
5.5	NOTIFICATIONS.....	16
5.6	ACTIVITIES TO ENCOURAGE STAKEHOLDER PARTICIPATION IN THE CERTIFICATION PROCESS.....	16
6.0	REQUIRED AIRPORT/HELIPORT PRE-APPLICATION CONSULTATION.....	17
7.0	REFERENCES	18

LIST OF TABLES

Table 1. Most Prevalent Non-English Languages Spoken in Study Area Zip Codes.....	10
---	----

LIST OF FIGURES

Figure 1.	Project Location Map
Figure 2.	Project Area
Figure 3.	Study Area

LIST OF EXHIBITS

Exhibit A.	Master List of Stakeholders/Notification List
Exhibit B.	Affected Agency and Municipality Consultations
Exhibit C.	Example Meeting Log

1.0 INTRODUCTION

Cassadaga Wind LLC (“the Applicant”), a subsidiary of EverPower Wind Holdings, Inc. is proposing to submit an Application to construct a major electric generating facility under Article 10 of the Public Service Law (“PSL”). Pursuant to the rules of the New York State Board on Electric Generation Siting and the Environment (“Siting Board”), applicants proposing to submit an Application to construct a major electric generating facility under Article 10 must submit a Public Involvement Program plan (“PIP” or “Plan”). Under 16 NYCRR § 1000.4, the PIP must be submitted to the Department of Public Service (“DPS”) for review at least 150 days prior to filing a Preliminary Scoping Statement (PSS). This document is intended to be the PIP for the Cassadaga Wind Project (“the Project”). The Project is intended to be an approximately 126 megawatt (MW) wind powered electric generating facility proposed by the Applicant to be located in the Towns of Charlotte, Cherry Creek, Arkwright, and Stockton, Chautauqua County, New York (Figure 1).

As required under 16 NYCRR § 1000.4, the Applicant’s PIP plan includes the following components:

- (1) consultation with the affected agencies and other stakeholders;
- (2) pre-application activities to encourage stakeholders to participate at the earliest opportunity;
- (3) activities designed to educate the public as to the specific proposal and the Article 10 review process, including the availability of funding for municipal and local parties;
- (4) the establishment of a website to disseminate information to the public and updates regarding the Project and the Article 10 process;
- (5) notifications to affected agencies and other stakeholders; and
- (6) activities designed to encourage participation by stakeholders in the certification and compliance process.

2.0 PROJECT DESCRIPTION

2.1 COMPANY PROFILE

The Applicant is a wholly owned subsidiary of EverPower Wind Holdings, Inc. (“EverPower”). Headquartered in Pittsburgh, Pennsylvania with offices in New York and Ohio, EverPower is a developer of utility grade wind projects. Since its founding in 2002, EverPower has used a unique approach to wind power development by partnering with landowners and communities to establish itself as a premier developer, owner, and operator of wind projects in the U.S. To date, EverPower currently has seven operational wind facilities with a nameplate capacity of approximately 752 MW, including the Howard Wind Project in Steuben County, New York. The Howard Wind Project has a total generating capacity of 55.35 MWs and uses 27 Repower MM92 turbines. The first 25 turbines became commercial operational in 2011, and the two-turbine

second phase became operational in 2012 (see <http://everpower.com/cassadaga-wind-project-ny/> for additional information).

2.2 PROJECT SUMMARY

The Cassadaga Wind Project is a proposed 126 MW project located within the Towns of Charlotte, Cherry Creek, Arkwright, and Stockton, Chautauqua County, New York. The proposed Project Area is depicted on Figure 2. Towns within the 5-mile radius PIP Study Area (described below in Section 2.3) include the Towns of Ellery, Ellington, Gerry, Pomfret, and Villenova, Chautauqua County, and the Towns of Conewango, Dayton, and Leon, Cattaraugus County.

The Project will be located on leased private land that is rural in nature. The actual footprint of the proposed facilities will be located within the leased land, and will enable farmers and landowners to continue with farming operations or other land uses.

The proposed Project consists of the construction and operation of a commercial-scale wind power project, including the installation and operation of up to 70 wind turbines, together with the associated collection lines (below grade and overhead), access roads, meteorological towers, and operation and maintenance (O&M) building. To deliver electricity to the New York State power grid, the Applicant proposes to construct a collection substation, a 115 kV electrical transmission line and a substation, which will interconnect with National Grid's Dunkirk-Moon 115 kV transmission line. It is anticipated that the newly constructed 115 kV transmission line will be approximately 5.5 miles in length.

The Cassadaga Wind Project will have a nameplate capacity of 126 MW, and is expected to operate at an annual net capacity factor (NCF) of approximately 36%. This means that over the course of a full calendar year the Project would produce up to 397,353 megawatt hours (MWh) of energy (i.e., 126 MW x 24 hrs/day x 365 days x 36%). This will be enough electricity to meet the average annual consumption of between approximately 36,791 and 55,187 households, based on average annual electric consumption of 10.8 MWh for the U.S. and 7.2 MWh for New York State, respectively (EIA, 2014).

The proposed Project will have positive impacts on socioeconomics in the area through employment opportunities, specifically by generating temporary construction employment, the majority of which will likely be drawn from the Chautauqua County and the (NY State) Southern Tier labor market. Local construction employment will primarily benefit those in the construction trades, including equipment operators, truck drivers, laborers, and electricians. In addition, Project operation will generate full-time jobs, including a

Project Manager, Wind Technicians, and an Assistant Operator. The Project will also result in increased revenues to County and local municipality tax bases, payments to the local hospitality industry, purchase of local supplies and goods, and lease revenues to participating landowners.

2.3 STUDY AREA

In 16 NYCRR § 1000.2(ar), the Study Area to be used for analysis of major electric generating facilities is defined as “an area generally related to the nature of the technology and the setting of the proposed site. For large facilities or wind power facilities with components spread across a rural landscape, the study area shall generally include the area within a radius of at least five miles from all generating facility components, interconnections and related facilities and alternative location sites.” The Study Area for the Project includes approximately 40,000 acres (62.5 square miles) and is depicted on Figure 3.

The PSS and the Application will further define the Study Area and will discuss Project alternatives. For purposes of the PIP, the Project Study Area has been defined broadly to include proposed land for the Project components included in the Project. As the Article 10 process develops, specific Project component locations will be identified, in compliance with the siting criteria referenced herein, and discussed with the public, stakeholders and the affected agencies through the PIP plan provided herein. It is presumed that any potential alternatives would be located within the communities identified herein.

With respect to initially identifying the Project Study Area, it should be noted that the selection of appropriate sites for a wind-powered electric generation facility is constrained by numerous factors that are essential considerations for a given project to operate in a technically and economically viable manner. Availability/quality of wind resource and proximity to the bulk power transmission system are the initial screening criteria evaluated in the site selection process for any wind power project. The Applicant's initial evaluation was based on publicly available data, such as the *Wind Resource of New York, Mean Annual Wind Speed at 100 Meters* map prepared by AWS Truewind, along with site visits and capacity analysis for nearby transmission lines. Initial review of this wind resource map indicated the potential for a suitable wind resource in Chautauqua County, and adequate access to the bulk power transmission system. Other important factors that increased the potential to develop a wind power project in the Study Area include willing land lease participants and host communities, and preliminary environmental surveys that have not indicated any significant wildlife or unique natural habitat concerns.

3.0 IDENTIFICATION OF STAKEHOLDERS

The fundamental first step in designing a Public Involvement Program is determining who may be affected by the proposed Project. The Applicant identified affected agencies and municipalities, utilities, host landowners, and other actual stakeholders based on utilizing DPS guidance; prior submissions of other Article 10 PIP plans; review of County GIS records, tax records, and personal visits; consultation with DPS general counsel and special environmental/regulatory counsel; and conducting internet research. Additionally, the Applicant considered the following in compiling its list of actual affected agencies and other actual stakeholders:

- The proposed locations of Project components within the Project Area;
- The point of interconnection;
- Sign-in sheets from previously held public meetings and outreach efforts;
- "Local Party," as defined under 16 NYCRR §1000.2(s);
- "Affected Agencies," as that term is used in 16 NYCRR § 1000 et seq;
- Host municipalities;
- Adjacent municipalities within a 5 mile radius of Project components;
- Public interest groups;
- Host landowners who have a land agreement with Cassadaga Wind LLC;
- Adjacent landowners who have property within 2,500 feet of a turbine or 500 feet other Project components (e.g., collection lines, substation, met tower, O&M facility, etc.), and any additional landowners whose homes are within 5,000 feet of a turbine.
- State and federal elected officials representing the Host and Adjacent Municipalities;

A master list of stakeholders (also referred to as the Notification List), which includes all known, potentially interested parties, was developed based upon the combination of efforts described above (see Exhibit A). Sections 3.1 through 3.9, below, identify stakeholders by category. In addition, a mailing list will be developed based on the stakeholders listed below and addresses solicited from public meetings and the Project website. The Applicant anticipates that the Notification List will be updated as necessary based on information received during PIP activities and these updates will be provided to DPS along with the PIP tracking submissions.

3.1 AFFECTED STATE AND FEDERAL AGENCIES

NYS Department of Agriculture and Markets
NYS Attorney General
New York State Energy Research and Development Authority
NYS Department of Environmental Conservation
NYS Office of General Services
NYS Governor's Office
NYS Department of Health
NYS Division of Homeland Security and Emergency Services
NYS Office of Parks, Recreation and Historic Preservation
NYS Department of Public Service
NYS Department of State
NYS Department of Transportation
New York Independent System Operator
Empire State Development Corporation
State Senator Catharine Young, 57th Senate District
State Assemblyman Andy Goodell, Assembly District 150
US Army Corps of Engineers
US Fish and Wildlife Service
US Federal Aviation Administration
US Department of Defense
National Telecommunications and Information Administration
US Senator Charles E. Schumer
US Senator Kirsten E. Gillibrand
US Representative Tom Reed, District 23

3.2 LOCAL AGENCIES

County of Chautauqua Industrial Development Agency
Chautauqua County Department of Planning and Economic Development
Chautauqua County Department of Public Facilities
Chautauqua County Division of Transportation
Town of Cherry Creek Highway Department
Town of Charlotte Highway Department

Town of Arkwright Highway Department
Town of Stockton Highway Department
Chautauqua County – Jamestown Airport
Chautauqua County – Dunkirk Airport
Chautauqua County Visitors' Bureau
Cherry Creek Fire Department
Sinclairville Fire Department
Cassadaga Fire Department
Stockton Fire Department

3.3 HOST MUNICIPALITIES AND SCHOOL DISTRICTS

Chautauqua County
Town of Cherry Creek
Town of Charlotte
Town of Arkwright
Town of Stockton
Cassadaga Valley Central School District
Pine Valley Central School District

3.4 ADJACENT MUNICIPALITIES AND SCHOOL DISTRICTS

Cattaraugus County
Village of Cherry Creek
Village of Sinclairville
Village of Cassadaga
Village of South Dayton, Cattaraugus County
Town of Ellery
Town of Ellington
Town of Gerry
Town of Pomfret
Town of Villenova
Town of Conewango, Cattaraugus County
Town of Dayton, Cattaraugus County
Town of Leon, Cattaraugus County

Bemus Point Central School District
Chautauqua Lake Central School District
Falconer Central School District
Forestville Central School District
Fredonia Central School District
Randolph Central School District
Gowanda Central School District
Brocton Central School District

3.5 ADDITIONAL STAKEHOLDERS – BROADER AREA

National Grid
Steuben Rural Electric Cooperative
Empire Energy
National Fuel Gas
AT&T
Verizon
Windstream
Alstar Ambulance
WCA Services Corporation
Silver Creek Emergency Squad
Rural Metro Corporation
Cherry Creek Sno Goers
Chautauqua Trail Riders
Cattaraugus/Chautauqua Chapter of the NYS Horse Council
Lily Dale Assembly

3.6 HOST AND ADJACENT LANDOWNERS

Host landowners are landowners with whom the Applicant has entered into a lease or easement agreement. Adjacent landowners are landowners with property within 2,500 feet of a turbine or 500 feet other Project components (e.g., collection lines, substation, met tower, O&M facility, etc.), and any additional landowners whose homes are within 5,000 feet of a turbine. The identities of potential host and adjacent landowners are determined from County GIS records, tax records, and personal visits by representatives of the Applicant. The final layout will be determined by incorporating further input from stakeholders, as well as

processing data from fieldwork (e.g., avoidance of impacts to wetlands identified during field delineation efforts). Therefore, specific host and adjacent Landowner information is not included with this PIP. This information will be submitted with the PSS, as required by 16 NYCRR § 1000.5. In addition, the Applicant will send out a mass mailing to all landowners (and local businesses) proximate to the Project, which will provide notice to the affected landowners of the proposed project and the Article 10 process.

3.7 PUBLIC INTEREST GROUPS

Chautauqua County Chamber of Commerce
Southern Tier West Regional Planning and Development Board
Chautauqua County Farm Bureau
Concord Grape Belt Heritage Association
Chautauqua County American Legion
Cassadaga Lakes Association
Chautauqua County Citizens for Responsible Wind Power
Chautauqua County Environmental Management Council
Concerned Citizens of Cattaraugus County

3.8 ENVIRONMENTAL JUSTICE COMMUNITIES THAT WILL BE AFFECTED BY THE PROPOSAL

The Cassadaga Wind Project will be subject to the rules contained in 6 NYCRR Part 487 promulgated by the NYSDEC for the analysis of environmental justice issues associated with projects subject to review and approval under Article 10 of the New York Public Service Law.

Per NYSDEC Environmental Justice Policy CP-29, Potential Environmental Justice Areas include census block groups featuring populations that meet or exceed at least one of the following statistical thresholds:

1. At least 51.1% of the population in an urban area reported themselves to be members of minority groups; or
2. At least 33.8% of the population in a rural area reported themselves to be members of minority groups; or
3. At least 23.59% of the population in an urban or rural area had household incomes below the federal poverty level.

Based on data obtained from the NYSDEC's *Geospatial Information System (GIS) Tools for Environmental Justice* website (www.dec.ny.gov/public/911.html), the nearest Potential Environmental Justice Area to the

Project is approximately 4 miles from the nearest proposed turbine locations, and features two adjacent census block groups that include all or part of the Towns of Leon and Conewango (block group ID: 360099605003) and the Towns of New Albion and Napoli (block group ID: 360099605004). Both block groups are designated because at least 23.59% of the population had household incomes below the federal poverty level (Leon-Conewango: 36.08%; New Albion-Napoli: 28.29%).

Because it is sited so far from the Potential Environmental Justice Area, the Project is not expected to have an impact on this (or any other) Environmental Justice area. Further discussion on Environmental Justice areas, including the cumulative impact of existing sources of air pollutants and the projected emission of air pollutants from the proposed facility, will be provided in the PSS and the Application (Exhibit 28) pursuant to the Article 10 requirements set forth at 1000.5(l)(2)(xi).

4.0 LANGUAGE ACCESS

In 16 NYCRR § 1000.4(d), Article 10 regulations require the PIP to identify (1) any language other than English spoken according to United States Census data by 5,000 or more persons residing in any 5-digit zip code postal zone in which any portion of such zone is located within the Study Area for the facility; and (2) any language other than English spoken by a significant population of persons residing in close proximity to the proposed facility, alternative locations, or interconnections.

The Study Area for the Project includes portions of Chautauqua and Cattaraugus Counties; Chautauqua County is a host municipality, while Cattaraugus County is an adjacent municipality. According to the US Census Bureau data from 2008-2012, 7.6% of Chautauqua County residents age 5 or older speak a language other than English at home¹. With a 2012 population estimate of 133,403 persons, this means approximately 9,472 people in the County speak a language other than English at home. In Cattaraugus County, 5.8% of the 79,278 residents age 5 or older (approximately 4,598 persons) speak a language other than English at home².

The Study Area contains portions of fourteen (14) 5-digit zip codes. Table 1 summarizes the most prevalent non-English languages spoken in each of these zip codes.

¹ <http://quickfacts.census.gov/qfd/states/36/36013.html>

² <http://quickfacts.census.gov/qfd/states/36/36009.html>

Table 1. Most Prevalent Non-English Languages Spoken in Study Area Zip Codes

Zip Code	Language	Number of Speakers
14062	Spanish or Spanish Creole	76
14063	Spanish or Spanish Creole	465
14138	Other West Germanic Languages	58
14712	Spanish or Spanish Creole	52
14718	Spanish or Spanish Creole	36
14723	German	12
14726	Other West Germanic Languages	366
14728	Hungarian	14
14733	Spanish or Spanish Creole	77
14740	Spanish or Spanish Creole	13
14747	French	14
14752	N/A	N/A
14782	Spanish or Spanish Creole	30
14784	German	24

Source: http://www.mla.org/map_data

As shown above in Table 1, no language other than English is spoken by more than 5,000 people residing in any zip code within the Study Area.

5.0 PROPOSED PUBLIC INVOLVEMENT PROGRAM

According to 16 NYCRR § 1000.4(c), a Public Involvement Program must include: (1) consultation with the affected agencies and other stakeholders; (2) pre-application activities to encourage stakeholders to participate at the earliest opportunity; (3) activities designed to educate the public as to the specific proposal and the Article 10 review process, including the availability of funding for municipal and local parties; (4) the establishment of a website to disseminate information to the public; (5) notifications; and (6) activities designed to encourage participation by stakeholders in the certification and compliance process. It is anticipated that this will be an ongoing, evolving process throughout all phases of the Article 10 review process (pre-application phase, application phase, hearing and decision phase, and post-certification phase) intended to disseminate information regarding the Project to stakeholders, solicit information from those stakeholders during public outreach events and generally foster participation in the Article 10 review. The Applicant has recently established a user friendly website in plain English that describes the Project (<http://everpower.com/cassadaga-wind-project-ny/>). While still under initial development, this website will describe the Article 10 process and provide Project updates throughout the development and construction

phases of the Project to keep the community informed of the Project's status (see Section 5.4 below for additional detail).

The following PIP elements will carry on through the duration of the Project:

- Project Representative (for the public and stakeholders to contact with questions, concerns, etc.): Bill Spencer, EverPower Development Manager; 1251 Waterfront Place, 3rd Floor, Pittsburgh, PA 15222; bspencer@everpower.com; 412-253-9403 (office), 724-674-2100 (mobile)
- Toll Free Number: 1-844-624-WIND (9463)
- Local Document Repositories:
 - Cassadaga Branch Library; 18 Maple Avenue, Cassadaga, NY 14718 (716-595-3822)
 - Sinclairville Free Library; 15 Main Street, Sinclairville, NY 14782 (716-962-5885)
 - Farman Free Library Association of Ellington; 748 North Park, Ellington, NY 14732 (716-287-2945)

5.1 CONSULTATION WITH THE AFFECTED AGENCIES AND STAKEHOLDERS

Article 10 regulations require both general and specific consultations with affected agencies and municipalities. Affected agencies, listed above in Section 3.1 and 3.2, were identified through review of the Article 10 regulations in consultation with the Project's permitting counsel and environmental consultant. Affected municipalities are identified in Sections 3.3 and 3.4 above. Consultation with affected agencies and municipalities will include the following general steps:

1. The Applicant will make an initial contact with each agency or municipality to make certain they are aware of the Project and inform them of the Article 10 process, including steps for intervenor funding and provide information on who to contact with any questions or comments about the Project or about Article 10;
2. Subsequent interaction with the agency or municipality as needed to answer specific questions or concerns about the Project, and to identify the applicable studies and impact analyses to be performed and how they pertain to the Project; and
3. Other specific consultations as required by the Article 10 regulations.

The goals of the initial consultation with each municipality or agency will be to consult with representatives, disseminate information, request information, and schedule follow up meetings and/or consultations, as appropriate. Specific information provided to the affected agencies and municipalities will include description of the Project and location; explanation the phases of the Article 10 process and how the agency

or municipality can participate in each step; description of the available intervenor funding and the process for obtaining funding; information about other planned consultations; sources of additional information about the Project and Article 10 (e.g., the Project and Siting Board websites), and agricultural land and operations impacts. Information to be requested from affected municipalities and agencies may vary by the involvement of each (e.g., whether it is a host or adjacent municipality) but could include topics such as payment in lieu of tax agreements, highway work agreements, local laws, emergency response organizations, environmental impact review, contact information for public interest groups, and determination of which news sources are used for official notices.

It should be noted that the in accordance with 16 NYCRR 1000.5(g), comments on the Preliminary Scoping Statement ("PSS") are due within 21 days after its filing with the Secretary. The Applicant intends to engage municipalities, agencies, and stakeholders throughout the PIP implementation process in order to identify their respective interests, and obtain information regarding particular resources, locations, concerns and recommendations of the affected communities, agencies and interests groups. Prior to filing the PSS, this will be accomplished through a variety of methods, including the various open house meetings, direct correspondence, review of any submitted comments on the website, and targeted meetings with some of the individual stakeholder entities identified herein. During these sessions, the Applicant will provide stakeholders with the approximate schedule for PSS submission and highlight the 21-day public comment period.

Consultations will be deemed successful if (1) the appropriate information about the Project and Article 10 process was provided to agency or municipality representatives, (2) the relevant information requested was gathered to help advance the PIP process and preparation of the Application, and (3) follow up meetings or consultations were either scheduled or will be scheduled, as needed.

The Table provided in Exhibit B lists the affected agencies and municipalities, as identified at the time this PIP was prepared, the goals and objectives of each consultation, and the plan for achieving these goals. Please note that many of these consultations have already been initiated.

5.2 PRE-APPLICATION ACTIVITIES TO ENCOURAGE STAKEHOLDER PARTICIPATION

Through meetings with various State and local agencies, the Applicant has been engaging in pre-application activities to encourage stakeholder participation since 2011. These activities are described below:

- The Applicant initiated public involvement for the Project by providing general information at the monthly Town Board meeting in the Town of Cherry Creek on August 9, 2011. This was early in the development process: project size and specific turbine locations had yet to be determined. Conceptual information was provided about the possibility of a wind energy facility within the Town, and the Town Board responded positively.
- On November 1, 2012, the Applicant attended the monthly Zoning Board meeting in the Town of Charlotte, where the agenda included a public hearing on an application for a meteorological (met) tower. There was no opposition to the met tower, and the permit application was approved unanimously. The met tower in the Town of Charlotte was erected January 10, 2013. This tower has been collecting site-specific wind data necessary for site plan development.
- The Applicant gave a presentation to members of the County of Chautauqua Industrial Development Authority (CCIDA) on January 25, 2013. By this time Project plans had been refined to the 126 MW size currently proposed. Topics of discussion included potential use of Boutwell Hill State Forest lands.
- The Applicant and their avian and bat consultants attended a meeting on June 18, 2013, at the United States Fish and Wildlife Service (USFWS) office in Cortland, New York. On June 27, 2013, the Applicant and their consultants participated in a conference call with the New York State Department of Environmental Conservation (NYSDEC). The purpose of these meetings was to provide the USFWS and NYSDEC with draft avian and bat survey work plans, and obtain agency comment/approval of the work plans.
- On January 15, 2014, the Applicant attended the monthly meeting of the Charlotte Town Board to provide updated Project information and discuss the possibility of using State Forest Lands within the Town.
- On January 22, the Applicant met with the Cherry Creek Town Supervisor Bill Young and Road Supervisor Ken Chase to provide updated Project information. Mr. Young requested additional information, which the Applicant provided on January 28, 2014 and February 11, 2014.
- The Applicant met with Chautauqua County Executive Vincent Horrigan at the Chautauqua County offices on February 12, 2014 to provide information about the Project.

- The Applicant attended monthly Town Board meetings in Cherry Creek and Charlotte on March 10 and 12, 2014. All Town Board members were present at both meetings, and both Boards voted to pass resolutions of support for enacting law to grant an easement for Project collection lines to cross Boutwell Hill State Forest.
- On March 24, 2014, the Applicant met with Region 5 Staff at the USFWS office in Cortland to provide an update on the avian and bat studies planned for the coming spring and summer, in accordance with the previously provided work plan. Preliminary results from the fall 2013 studies were also presented.

In addition to these engagement activities that have already taken place, the Applicant will continue pre-application activities to encourage stakeholder participation as set forth in the Agency/Municipality Consultations table included in Exhibit B of this PIP. This table will be continuously updated as consultations and stakeholder participation activities take place, and additional means of engagement are identified (as necessary).

5.3 ACTIVITIES TO EDUCATE THE PUBLIC ON THE PROPOSAL, PROCESS, AND FUNDING

Many of the Town Board and Zoning Board meetings at which information was disseminated, as described above, were open to the public.

In addition, the Applicant gave a conference presentation and manned a booth to provide general information about wind energy at the Chautauqua County Energy Conference on November 1 and 2, 2013. The Applicant was a main sponsor of this event, which was free and open to the public.

5.3.1 Public Meetings

The Applicant intends to hold two open house style public meetings prior to submittal of the PSS, anticipated to be in January and March 2015. At a minimum there will be at least three attendants for the Applicant, including EverPower's Communications Director, Project Manager, and Environmental and Permitting Director. There will be a short introduction from one of the Applicant's representatives and then one on one discussions with attendees around posters displaying Project information. It is anticipated that one of these meetings will be held at the Fire Hall in the Village of Sinclairville, and the other meeting will be held in the Village of Cherry Creek at the local VFW. All public meetings held by the Applicant will be

properly noticed in local newspapers, including the Jamestown Post-Journal (newspaper of record for the Towns of Charlotte and Cherry Creek) and the Dunkirk Observer (newspaper of record for the Towns of Arkwright and Stockton), as well as the Project website (<http://everpower.com/cassadaga-wind-project-ny/>). In addition there will be a mass mailing, which will be comprised of the stakeholders list, but will expand as additional addresses are obtained through public meetings and the Project website.

5.3.2 Educational Materials

The Applicant will develop educational materials to inform the public about wind-generated energy, the proposed Project, and the Article 10 process. These materials will include poster-sized maps and graphics to be displayed at public meetings. In addition, more portable materials (e.g., factsheets or brochures) will be distributed at public meetings, and via local libraries, host municipalities, adjacent municipalities, and mailings to stakeholders and additional addresses obtained through public meetings and the Project website, and materials will also be available on the Project website. These materials will allow the public to learn more about the Project, and will include links to the Siting Board and Project websites. If necessary, these materials will also be produced in non-English languages (see Section 4.0 above for additional information regarding Language Access).

5.4 WEBSITE

The Applicant has recently established a user friendly website in plain English that describes the Project (<http://everpower.com/cassadaga-wind-project-ny/>). This website provides information regarding the Article 10 process, and will continue to provide Project updates throughout the development and construction phases of the Project to keep the community informed of the Project's status. For example, additional maps will be added to the website as the Project layout evolves, and notices will be posted the website prior to various milestones and public meetings/outreach events.

Information that is (or ultimately will be) on the website includes:

- Project description;
- Project benefits and need;
- Summary of permitting requirements;
- Links to the Siting Board Article 10 Public Information Coordinator, the Siting Board home page, and case-specific documents;
- Information on the Article 10 process;
- Summary of the Intervenor Funding process and how to apply;

- Project layout figures and photo simulations/renderings;
- Project contact information, including email address and toll free telephone number;
- Copies of Article 10 and related licensing documents;
- A schedule that lists dates/times/locations for outreach events and key milestone dates, such as when the application will be filed;
- Addresses of local document repositories; and
- Tracking Reports summarizing the Project's PIP activities to date, including summaries of stakeholder interactions, comments, and questions.

As indicated above, the website includes Project contact information (email address and toll free telephone number). The Applicant intends to respond directly to all substantive inquiries and comments submitted to the Project contact, and will document all such correspondence. Email and postal addresses collected through the website will be added to the master stakeholder list.

5.5 NOTIFICATIONS

The Article 10 regulations establish the notification requirements for serving documents and information upon all stakeholders. In accordance with these regulations, the Applicant will issue a notification to all known stakeholders by letter and email list serve, seven (7) or more days prior to each major milestone filing. The notification list, attached hereto as Exhibit A, identifies who will receive each specific notification and when they will be issued. All notifications will be accompanied by a copy of the appropriate DPS filing.

In addition to the letters and emails disseminating the notification of major milestone filings to stakeholders, the Applicant will also publish the notice in local newspapers, including the Jamestown Post-Journal (newspaper of record for the Towns of Charlotte and Cherry Creek) and the Dunkirk Observer (newspaper of record for the Towns of Arkwright and Stockton). Notifications will also be provided on the Project website (<http://everpower.com/cassadaga-wind-project-ny/>).

All public meetings will be appropriately noticed in local newspapers and on the Project website.

5.6 ACTIVITIES TO ENCOURAGE STAKEHOLDER PARTICIPATION IN THE CERTIFICATION PROCESS

Beyond the activities described above in Sections 5.1 through 5.5, the Applicant will identify additional, practical measures to encourage stakeholder participation during the certification process. It is anticipated

that this will be an ongoing, evolving process throughout all phases of the Article 10 review process (pre-application phase, application phase, hearing and decision phase, and post-certification phase).

The Applicant will track its Public Involvement Program and provide regular updates to DPS Staff. Specifically, the Applicant will maintain a Meeting Log that will provide specifics on all meetings, including dates, locations, attendees, purpose, and follow-up action items. An example Meeting Log is included as Exhibit C of this document.

As previously stated, the Applicant intends to hold two open house style public meetings prior to submittal of the PSS, anticipated to be in January and March of 2015. In addition, between the two public meetings there will be a mass mailing of educational materials provided to stakeholders, as well as additional addresses solicited from public meetings and the Project website. In addition, the Project website will be updated continuously with Project developments, meetings, and announcements to keep stakeholders and the public informed.

6.0 REQUIRED AIRPORT/HELIPORT PRE-APPLICATION CONSULTATION

Pursuant to 16 NYCRR § 1001.25(e) & (f), the Applicant shall coordinate with the Federal Aviation Administration, the Department of Defense, and the National Telecommunications and Information Administration to confirm possible affected airports or heliports near the location of the Project, or potential hazards associated with radio signal interference and air traffic control. Each federal entity will be contacted via phone call and/or letter to identify the operators and/or appropriate contact person.

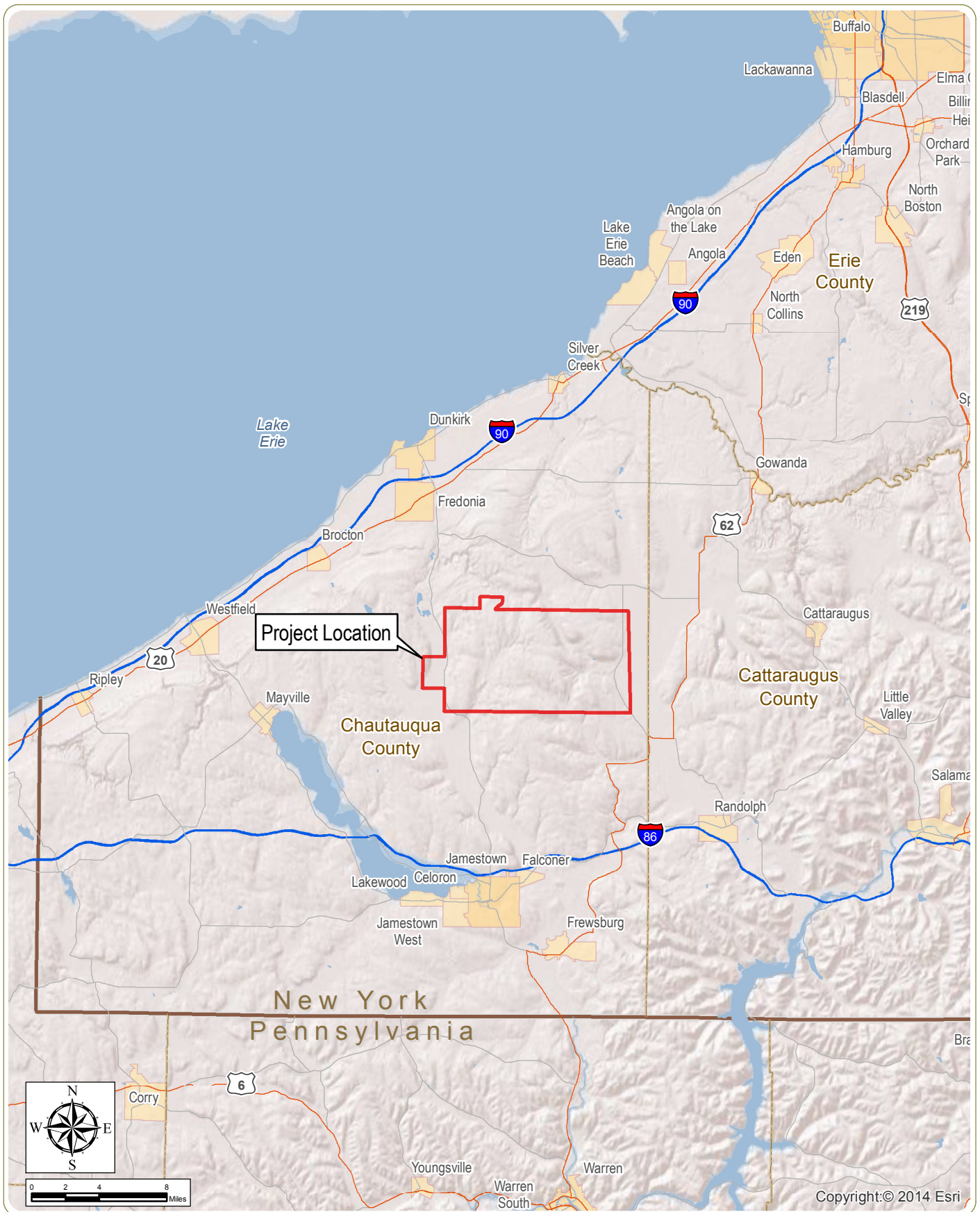
Once the proper operator/representative is determined, the outreach to the operator of the public airport or public heliport will include another phone call, a follow-up letter, and, if necessary, a meeting to provide Project-specific information. The Project-specific information to be provided will include: a detailed map showing the Study Area, Project Area, and location of Project components; coordinates and dimensions for each proposed turbine; a description of the Project construction and operational phases; and a request for review of and comment. In addition, outreach to the Department of Defense will include an initial screening with a follow-up review of the proposed Project, if required.

The Applicant will also consult with privately owned and operated airports/heliports that may be affected by the Project.

7.0 REFERENCES

Energy Information Administration (EIA). 2014. *Frequently Asked Questions: How Much Electricity Does an American Home Use?* Available at: <http://www.eia.gov/tools/faqs/#electricity> (Last updated January 10, 2014; Accessed June 16, 2014).

Figures



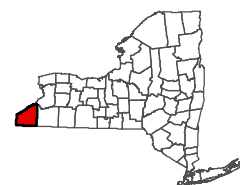
Cassadaga Wind Project

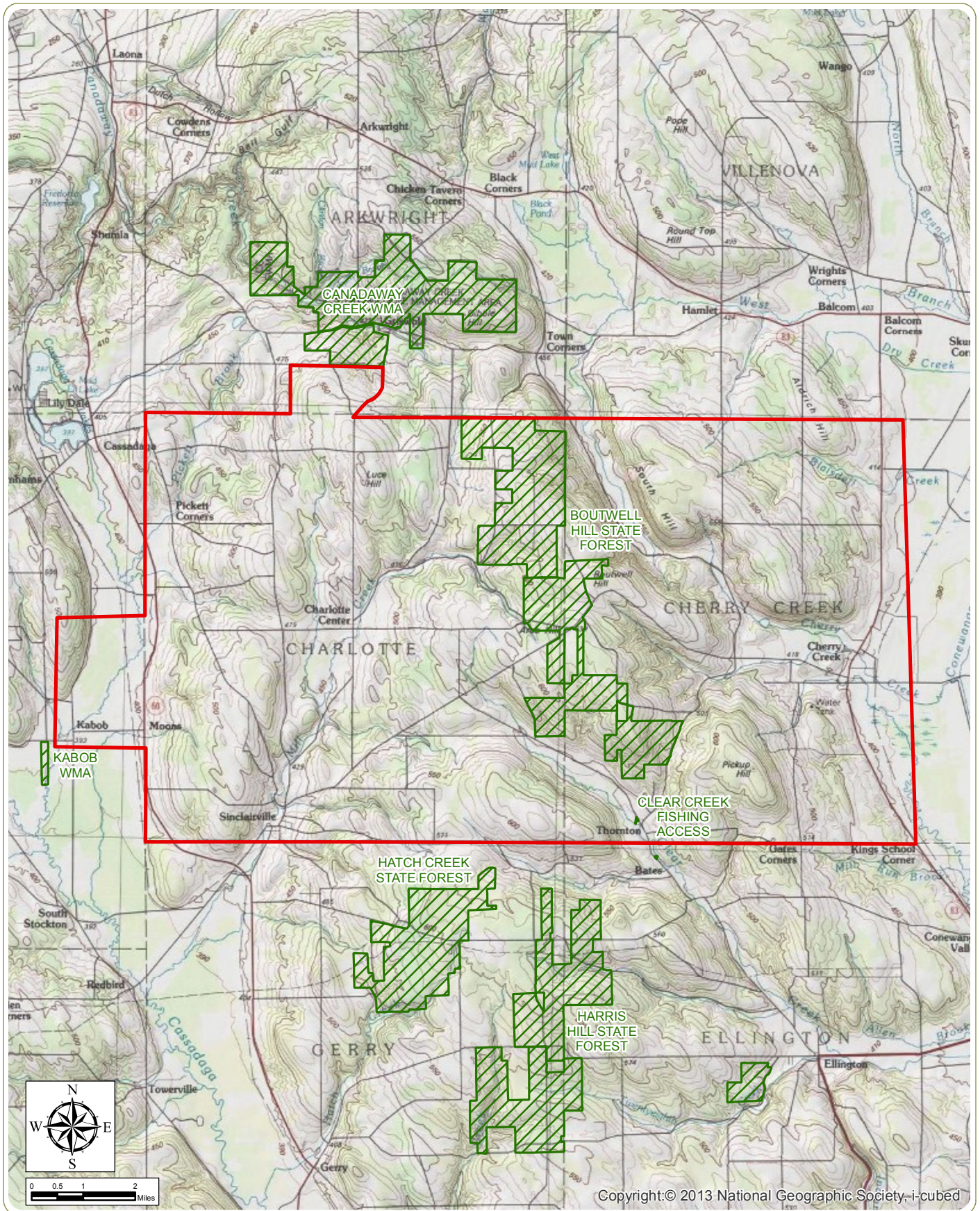
Towns of Charlotte, Cherry Creek, Arkwright, and Stockton - Chautauqua County, New York

Figure 1: Regional Project Location

September 2014

- Notes:** 1. Basemap: ESRI ArcGIS Online "World Shaded Relief" Map Service and ESRI StreetMap North America, 2008.
 2. This is a color graphic. Reproduction in grayscale may misrepresent the data.





Copyright:© 2013 National Geographic Society, i-cubed



Cassadaga Wind Project

Towns of Charlotte, Cherry Creek, Arkwright, and Stockton - Chautauqua County, New York

Figure 2: Project Area

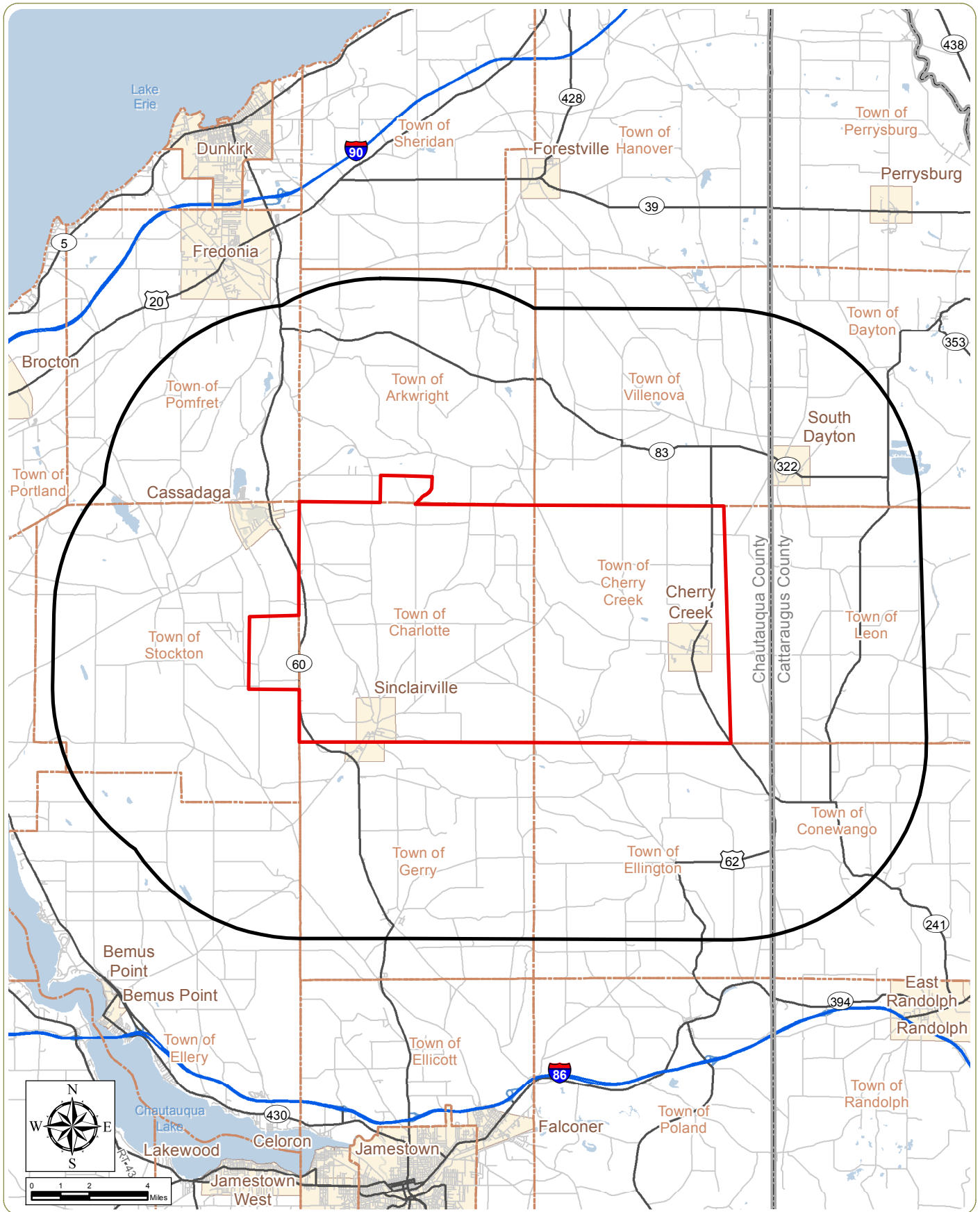
December 2014

Notes: 1. Basemap: ESRI ArcGIS Online "USA Topo Maps" Map Service.
2. This is a color graphic. Reproduction in grayscale may misrepresent the data.

 NYSDEC Land
 Project Area



www.edrjpc.com



Cassadaga Wind Project

Towns of Charlotte, Cherry Creek, Arkwright, and Stockton - Chautauque County, New York

Figure 3: Study Area

September 2014

Notes: 1. Basemap: ESRI StreetMap North America, 2008.

2. This is a color graphic. Reproduction in grayscale may misrepresent the data.

- Project Area
- 5-Mile Study Area
- City/Village Boundary
- Town Boundary
- County Boundary



Exhibit A

Master List of Stakeholders/Notification List

Cassadaga Wind Project Master List of Stakeholders/Notification List

Charles Leichner, Superintendent
Cassadaga Valley Central School District
PO Box 540
Route 60
Sinclairville, NY 14782

David Kurzawa, Interim Superintendent
Pine Valley Central School District
7755 New York 83
South Dayton, NY 14138

Michael Mansfield, Superintendent
Bemus Point Central School District
41 Liberty Street
Bemus Point, NY 14712

Benjamin Spitzer, Superintendent
Chautauqua Lake Central School District
100 N Erie Street
Mayville, NY 14757

Stephen Penhollow, Superintendent
Falconer Central School District
2 East Avenue North
Falconer, NY 14733

Dr. Whitney Vantine, Interim School Superintendent
Forestville Central School District
12 Water Street
Forestville, NY 14062

Paul DiFonzo, Superintendent
Fredonia Central School District
425 East Main Street
Fredonia, NY 14063

Kimberly Moritz, Superintendent
Randolph Central School District
18 Main Street
Randolph, NY 14772

James Klubek, Superintendent
Gowanda Central School District
10674 Prospect Street
Gowanda, NY 14070

John Hertlein, Superintendent
Brocton Central School District
138 West Main Street
Brocton, NY 14716

William Young, Town Supervisor
Town of Cherry Creek
PO Box 98
6845 Main Street
Cherry Creek, NY 14723

Kenneth Bochmann, Town Supervisor
Town of Charlotte
PO Box 994
8 Lester Street
Sinclairville, NY 14782

Frederic Norton, Town Supervisor
Town of Arkwright
8743 Center Road
Cassadaga, NY 14718

David Wilson, Town Supervisor
Town of Stockton
7344 Route 380
Stockton, NY 14784

Bruce Fisher, Mayor
Village of Cherry Creek
PO Box 26
6763 Main Street
Cherry Creek, NY 14723

Kenneth France, Mayor
Village of Sinclairville
PO Box 469
8 Lester Street
Sinclairville, NY 14782

Leeann Lazarony, Mayor
Village of Cassadaga
PO Box 286
22 Mill Street
Cassadaga, NY 14718

Scott Kerr, Mayor
Village of South Dayton
PO Box 320
311 Pine Street
South Dayton, NY 14138

Arden Johnson, Town Supervisor
Town of Ellery
PO Box 429
25 Sunnyside Avenue
Bemus Point, NY 14712

Laura Cronk, Town Supervisor
Town of Ellington
PO Box 344
813 West Main Street
Ellington, NY 14732

John Crossley, Town Supervisor
Town of Gerry
PO Box 15
4519 Route 60
Gerry, NY 14740

Donald Steger, Town Supervisor
Town of Pomfret
9 Day Street
Fredonia, NY 14063

Yvonne Park, Town Supervisor
Town of Villenova
1094 Butcher Road
South Dayton, NY 14138

Wayne McGuire, Town Supervisor
Town of Conewango
4662 Route 241
Randolph, NY 14772

Mark Smith, Town Supervisor
Town of Dayton
9932 Nashville Road
South Dayton, NY 14138

Erika Zollinger, Town Supervisor
Town of Leon
12550 Smith Road
South Dayton, NY 14138

Vincent Horrigan, County Executive
Chautauqua County
Gerace Office Building
3 North Erie Street
Mayville, NY 14757

John Searles, County Administrator
Cattaraugus County
303 Court Street
Little Valley, NY 14755

Kevin Sanvidge, Administrative Director/CEO
County of Chautauqua Industrial Development Agency
200 Harrison Street
Jamestown, NY 14701

Kevin Sanvidge, Director
Chautauqua County Department of Planning and Economic Development
200 Harrison Street
Jamestown, NY 14701

George Spanos, P.E., Director
Chautauqua County Department of Public Facilities
454 N. Work Street
Falconer, NY 14733

Ken France, District Supervisor
Chautauqua County Division of Transportation
2 Aero Drive
Dunkirk, NY 14048

Kenneth Chase, Highway Superintendent
Town of Cherry Creek Highway Department
PO Box 98
Cherry Creek, NY 14723

Mark Lebaron, Highway Superintendent
Town of Charlotte Highway Department
7059 Rood Road
Sinclairville, NY 14782

Stephen Mead, Highway Superintendent
Town of Arkwright Highway Department
1996 Henry Road
Forestville, NY 14062

Aaron Burnett, Highway Superintendent
Town of Stockton Highway Department
4652 West Railroad Avenue
Stockton, NY 14784

William Tucker, Manager of Airports and Parks
Chautauqua County – Jamestown and Dunkirk Airports
3163 Airport Drive
Jamestown, NY 14701

Andrew Jackson, Director
Chautauqua County Visitors' Bureau
P.O. Box 1441
Chautauqua, NY 14722

James Bostaph, Chief
Cherry Creek Fire Department
PO Box 204
Cherry Creek, NY 14723

David Luzack, Chief
Sinclairville Fire Department
30 Main Street
Sinclairville, NY 14782

Timothy Cobb Jr., Chief
Cassadaga Fire Department
22 Mill Street
Cassadaga, NY

John Burke, Chief
Stockton Fire Department
PO Box 12
Stockton, NY 14784

Todd Trantum, President/CEO
Chautauqua County Chamber of Commerce
512 Falconer Street
Jamestown, NY 14701

Richard Zink, Executive Director
Southern Tier West Regional Planning & Development Board
4039 Route 219, Suite 200
Salamanca, NY 14779

Richard Kimball, President
Chautauqua County Farm Bureau
PO Box 174
Dewittville, NY 14728

Andrew Dufresne, Executive Director
Concord Grape Belt Heritage Association
PO Box 194
Westfield, NY 14787

Craig Sutton, Commander
Chautauqua County American Legion
355 Werle Road
Dunkirk, NY 14048

Dennis Collins, President
Cassadaga Lakes Association
PO Box 294
Cassadaga, NY 14718

Clair Quadri, Chair
Chautauqua County Citizens for Responsible Wind Power
PO Box 223
Westfield, NY 14787

Doug Conroe, Chair
Chautauqua County Environmental Management Council
200 Harrison Street
Jamestown, NY 14701

Kathy Boser, President
Concerned Citizens of Cattaraugus County
Box 93
St. Bonaventure, NY 14778

Andrew W. Goodell, 150th District
NYS Assembly
2 East 2nd Street, Suite 320
Jamestown, NY 14701

Catharine M. Young, 57th District
NYS Senator
700 West State Street
Olean, NY 14760

Joe Martens, Commissioner
NYS Department of Environmental Conservation
625 Broadway
Albany, NY 12233

Abby Snyder, Region 9 Regional Director
NYS Department of Environmental Conservation
270 Michigan Avenue
Buffalo, NY 14203

Kelly Tyler, Buffalo Office Program Manager
New York State Energy Research and Development Authority (NYSERDA)
726 Exchange Street, Suite 821
Buffalo, NY 14210

Christina Orsi, Western NY Regional Director
Empire State Development Corporation
95 Perry Street, Suite 500
Buffalo, NY 14203

Eric T. Schneiderman
NYS Attorney General
State Capital Building
Albany, NY 12224

Gregory Young, M.D., Western Regional Office
Associate Acting Commissioner
NYS Department of Health
584 Delaware Avenue
Buffalo, NY 14202

Richard Ball, Commissioner
NYS Department of Agriculture and Markets
10B Airline Drive
Albany, NY 12235

Cesar Perales, Secretary of State
NYS Department of State
One Commerce Plaza
99 Washington Avenue
Albany, NY 12231

RoAnn Destito, Commissioner
NYS Office of General Services
41st Floor, Corning Tower
Empire State Plaza
Albany, NY 12242

Andrew M. Cuomo
NYS Governor
NYS State Capitol Building
Albany, NY 12224

Jerome Hauer, Commissioner
**NYS Division of Homeland Security and
Emergency Services**
1220 Washington Avenue
State Office Campus
Building 7A, Suite 710
Albany, NY 12242

Ruth Pierpont, Deputy Commissioner
New York State Division for Historic Preservation
**New York State Office of Parks, Recreation &
Historic Preservation (OPRHP)**
Peebles Island State Park
P.O. Box 189
Waterford, NY 12188-0189

Jay Bailey, Regional Director
OPRHP Allegany Region
2373 ASP Route #1-Suite 3
Salamanca, NY 14799

Audrey Zibelman, Chair
NYS Department of Public Service
Empire State Plaza
Agency Building 3
Albany, NY 12223

Darrell Kaminski, Region 5 Regional Director
NYS Department of Transportation
100 Seneca Street
Buffalo, NY 14203

Michael Bemis, Board Chair
New York Independent System Operator
10 Krey Boulevard
Rensselaer, NY 12144

Steve Metivier
Chief, NY Application Evaluation Section
Regulatory Branch, Buffalo District Office
US Army Corps of Engineers
1776 Niagara Street
Buffalo, NY 14207

David Stilwell, Field Supervisor
US Fish and Wildlife Service
3817 Luker Road
Cortland, NY 13045

Carmine Gallo, Eastern Region Regional
Administrator
US Federal Aviation Administration
1 Aviation Plaza
Jamaica, NY 11434

Steven J. Sample
Mission Evaluation Branch
US Department of Defense Siting Clearinghouse
3400 Defense Pentagon, Room 5C646
Washington, DC 10301

Karl B. Nebbia, Associate Administrator
Office of Spectrum Management
**National Telecommunications and Information
Administration**
Washington, D.C. 20230

Charles E. Schumer
US Senator
15 Henry Street, Room 100AF
Binghamton, NY 13901

Kirsten E. Gillibrand
US Senator
100 State Street, Room 4195
Rochester, NY 14614

Tom Reed, 23rd District
US Representative
2 East 2nd Street, Suite 300
Jamestown, NY 14701

Dennis Elsenbeck, Buffalo/Niagara Regional Director
National Grid
144 Kensington Avenue
Buffalo, NY 14214

William H. Moss, III
District 9 (Chautauqua County) Board Member
Steuben Rural Electric Cooperative
5966 South Road
Cherry Creek, New York 14723

Empire Energy
5571 Bentley Road
Chautauqua, NY 14722

National Fuel and Gas
1384 Peck Settlement Road
Jamestown, NY 14277

AT&T
Contact TBD

Verizon
Contact TBD

Windstream
201 E 4th Street
Jamestown, NY 14701

David Thomas, Executive Director
Alstar Ambulance
WCA Services Corporation
28 Maple Street
Jamestown, NY 14701

Paul Myer, President
Silver Creek Emergency Squad
162 Central Avenue
Silver Creek, NY 14136

Jay Smith, Western New York General Manager
Rural/Metro Corporation
481 William L. Gaiter Parkway
Buffalo, NY 14215

Cindy Hahn, Club President
Cherry Creek Sno Goers
P.O. Box 243
Cassadaga, NY 14718

Chautauqua Trail Riders
Falconer, New York 14733

Leah Leising, President
**Cattaraugus/Chautauqua Chapter of the NYS
Horse Council**
12503 Cottage Road
South Dayton, NY 14138

Donn Smeragliuolo, President
Lily Dale Assembly
PO Box 248
Lily Dale, NY 14752

**Seneca Nation of Indians
Cattaraugus Reservation**
12837 Route 438
Irving, New York 14081

Exhibit B

Affected Agency and Municipality Consultations

Affected Agency and Municipality Consultations

Agency/Municipality	Goals of Consultation	Plan/Method and General Schedule for Consultation ¹
<i>Schools</i>		
Cassadaga Valley and Pine Valley Central School Districts (host school districts)	Provide general information on the Project, Article 10 process, and intervenor funding, and provide contact information.	Letter to be sent before submittal of PSS.
	Notifications, as required by Article 10.	As per schedule in regulations.
	Provide answers to specific questions or concerns.	By phone, mail or in person as requested.
	Discuss transportation routes to minimize potential delays to school bus pick-ups and drop-off during Project construction.	Meeting or telephone conference at least two months prior to mobilization to site for construction.
Bemus Point, Brocton, Chautauqua Lake, Falconer, Forestville, Fredonia, Gowanda, and Randolph Central School Districts (adjacent school districts)	Provide general information on the Project, Article 10 process, and intervenor funding, and provide contact information.	Letter to be sent before submittal of PSS.
	Notifications, as required by Article 10.	As per schedule in regulations.
	Provide answers to specific questions or concerns.	By phone, mail or in person as requested.
	Discuss transportation routes, where applicable, to minimize potential delays to school bus pick-ups and drop-off during Project construction.	Meeting or telephone conference at least two months prior to mobilization to site for construction.
<i>Municipalities</i>		
Towns of Cherry Creek, Charlotte, Arkwright, and Stockton (host municipalities)	Provide general information on the Project, Article 10 process, and intervenor funding, and provide contact information.	Met with Cherry Creek and Charlotte Town Boards multiple times from 2011 through 2014. Will continue consultation throughout Article 10 process.
	Provide notice to Town two weeks prior to submittal of PSS.	Mail notice.
	Notifications, as required by Article 10.	As per schedule in regulations.
	Provide answers to specific questions or concerns.	By phone, mail or in person as requested by Town.
	Determine whether all local laws potentially applicable to the Project have been identified.	Initial meeting or telephone conference no later than one month prior to submittal of PSS.

Agency/Municipality	Goals of Consultation	Plan/Method and General Schedule for Consultation ¹
	Discuss transportation routes, radius improvements, and use of right-of-way with Town Highway Departments.	Meeting with Town Highway Departments before submittal of PSS to discuss capital improvement projects and future plans, during Article 10 process as needed, and prior to mobilization to site for construction.
	Inform local emergency responders of contingency plans in the event of an emergency during construction or operational phases of the Project.	Meeting or telephone conference during Article 10 process and at least two months prior to mobilization to site for construction.
Villages of Cherry Creek, Sinclairville, Cassadaga, and South Dayton (adjacent municipalities)	Provide general information on the Project, Article 10 process, and intervenor funding, and provide contact information.	Letter to be sent before submittal of PSS.
	Provide notice two weeks prior to submittal of PSS.	Mail notice.
	Notifications, as required by Article 10.	As per schedule in regulations.
	Provide answers to specific questions or concerns.	By phone, mail or in person as requested.
Towns of Ellery, Ellington, Gerry, Pomfret, Villenova, Conewango, Dayton, and Leon (adjacent municipalities)	Provide general information on the Project, Article 10 process, and intervenor funding, and provide contact information.	Letter to be sent before submittal of PSS.
	Provide notice two weeks prior to submittal of PSS.	Mail notice.
	Notifications, as required by Article 10.	As per schedule in regulations.
	Provide answers to specific questions or concerns.	By phone, mail or in person as requested.
Fire Departments (Cherry Creek, Sinclairville, Cassadaga, and Stockton)	Work with emergency responders to develop appropriate emergency response plans for construction and operational phases of the Project	Initial meeting(s) during development of the PSS with subsequent meeting(s) during development of the Application and as needed throughout Article 10 process.
County		
Chautauqua County (host municipality)	Provide general information on the Project, Article 10 process, and intervenor funding, and provide contact information.	Met with Chautauqua County Executive on February 12, 2014. Will follow up with phone after submitting PIP and letter before submittal of PSS.
	Provide notice to County two weeks prior to submittal of PSS.	Mail notice.

Agency/Municipality	Goals of Consultation	Plan/Method and General Schedule for Consultation ¹
	Notifications, as required by Article 10.	As per schedule in regulations.
	Provide answers to specific questions or concerns.	By phone, mail or in person as requested by County.
	Determine whether all local laws potentially applicable to the Project have been identified.	Initial correspondence no later than one month prior to submittal of PSS.
	Review County Building Department requirements regarding building permits.	Meeting with Building Department prior to mobilization to site for construction.
	Review County Division of Transportation requirements for temporary radius improvements, transportation routes, and use of right-of-ways.	Meeting with Division of Transportation before submittal of PSS to discuss capital improvement projects and future plans, during Article 10 process as needed, and prior to mobilization to site for construction.
Cattaraugus County (adjacent municipality)	Provide general information on the Project, Article 10 process, and intervenor funding, and provide contact information.	Letter to be sent before submittal of PSS.
	Provide notice two weeks prior to submittal of PSS.	Mail notice.
	Notifications, as required by Article 10.	As per schedule in regulations.
	Provide answers to specific questions or concerns.	By phone, mail or in person as requested.
County of Chautauqua Industrial Development Agency	Provide information on the Project and Article 10 process, intervenor funding, contact information, and discuss other development projects that may be affected by the Project.	Initial meeting(s) during development of the PSS with subsequent meeting(s) during development of the Application and as needed throughout Article 10 process.
Chautauqua County Department of Planning and Economic Development	Provide information on the Project and Article 10 process, intervenor funding, contact information, and discuss existing and future planning documents, associated objectives, and how such objectives may be affected or promoted by the Project.	Initial meeting(s) during development of the PSS with subsequent meeting(s) during development of the Application and as needed throughout Article 10 process.
Chautauqua County Department of Public Facilities	Provide information on the Project and Article 10 process, intervenor funding, contact information, and discuss facilities that may be affected by the Project.	Initial meeting(s) during development of the PSS with subsequent meeting(s) during development of the Application and as needed throughout Article 10 process.
Chautauqua County Visitors' Bureau	Provide information on the Project and Article 10 process, intervenor funding,	Initial meeting(s) during development of the PSS with subsequent

Agency/Municipality	Goals of Consultation	Plan/Method and General Schedule for Consultation ¹
	contact information, and discuss bureau initiatives that may be affected or promoted by the Project.	meeting(s) during development of the Application and as needed throughout Article 10 process.
Chautauqua County – Jamestown and Dunkirk Airports	Provide information on the Project and Article 10 process, intervenor funding, contact information, and discuss airport operations that may be affected by the Project.	Initial meeting(s) during development of the PSS with subsequent meeting(s) during development of the Application and as needed throughout Article 10 process.
<i>State Agencies/Representatives</i>		
Member of NYS Assembly for District 150 (currently Andy Goodell) and NYS Senator for District 57 (currently Catharine Young)	Provide general information on the Project, Article 10 process, and intervenor funding, and provide contact information.	Letter to be sent before submittal of PSS.
	Notifications, as required by Article 10.	As per schedule in regulations.
	Provide answers to specific questions or concerns.	By phone, mail or in person as requested.
New York State Department of Environmental Conservation (NYSDEC)	Identify agency concerns to incorporate feedback into bird and bat study design.	Participated in a conference call with the NYSDEC to provide draft avian and bat survey work plans, and obtain agency comment/approval.
	Notifications, as required by Article 10.	As per schedule in regulations.
	Determine whether all NYSDEC regulations potentially applicable to the Project have been identified.	Initial correspondence no later than one month prior to submittal of PSS.
	Present bird and bat studies and determine if additional studies are required.	Meeting or conference call prior to submittal of PSS.
NYSDEC Region 9	Notifications, as required by Article 10.	As per schedule in regulations.
New York State Research and Development Authority (NYSERDA)	Notifications, as required by Article 10.	As per schedule in regulations.
Empire State Development Corporation	Notifications, as required by Article 10.	As per schedule in regulations.
NYS Attorney General	Notifications, as required by Article 10.	As per schedule in regulations.
New York State Department of Health (NYSDOH)	Notifications, as required by Article 10.	As per schedule in regulations.
	Determine whether all NYSDOH regulations applicable to the Project have been identified.	Initial correspondence no later than one month prior to submittal of PSS.
NYS Department of Agriculture and Markets (NYSAM)	Notifications, as required by Article 10.	As per schedule in regulations.

Agency/Municipality	Goals of Consultation	Plan/Method and General Schedule for Consultation ¹
	Determine whether all NYSA&M regulations applicable to the Project have been identified.	Initial correspondence no later than one month prior to submittal of PSS.
NYS Department of State (NYSDOS)	Notifications, as required by Article 10.	As per schedule in regulations.
	Determine whether all NYSDOS regulations applicable to the Project have been identified.	Initial correspondence no later than one month prior to submittal of PSS.
NYS Office of General Services	Notifications, as required by Article 10.	As per schedule in regulations.
NYS Governor's Office	Notifications, as required by Article 10.	As per schedule in regulations.
NYS Division of Homeland Security and Emergency Services	Notifications, as required by Article 10.	As per schedule in regulations.
NYS Office of Parks, Recreation and Historic Preservation	Consultation in accordance with Section 14.09 of the New York State Parks, Recreation, and Historic Preservation Law and/or Section 106 of the Historic Preservation Act, as required	Meetings to develop work plans and content of cultural resources studies prior to submittal of PSS, ongoing review of studies and mitigation recommendations
NYS Department of Public Service	Facilitate Article 10 review process	Meetings throughout process.
NYS Department of Transportation	Identify constraints associated with roads used for component transport	Prior to submittal of Article 10 Application.
New York Independent System Operator	System Impact Study	Prior to submittal of Article 10 Application.
<i>Federal Agencies/Representatives</i>		
US Army Corps of Engineers	Determine jurisdiction and permits necessary under Section 404 of the Clean Water Act	Pre-application meeting anticipated as final design of Project nears completion.
US Fish and Wildlife Service	Determine potential concerns associated with the Endangered Species Act, Bald and Golden Eagle Protection Act, and the Migratory Bird Treaty Act	Prior to submittal of the PSS.
US Federal Aviation Administration	No Hazard Determinations	Prior to submittal of Article 10 Application.
US Department of Defense	Determine any concerns with government radar systems	Prior to submittal of Article 10 Application.
US Senator Charles E. Schumer	Notifications, as required by Article 10.	As per schedule in regulations.

Agency/Municipality	Goals of Consultation	Plan/Method and General Schedule for Consultation ¹
National Telecommunications and Information Administration	Notifications, as required by Article 10. Consultation to determine Project affects on government communication systems.	As per schedule in regulations, and prior to submittal of PSS.
US Senator Kirsten E. Gillibrand	Notifications, as required by Article 10.	As per schedule in regulations.
US Representative Tom Reed, District 23	Notifications, as required by Article 10.	As per schedule in regulations.
<i>Other Stakeholders</i>		
Chautauqua County Chamber of Commerce	Provide information on the Project and Article 10 process, intervenor funding, contact information, and discuss stakeholder initiatives that may be affected or promoted by the Project.	Initial correspondence no later than one month prior to submittal of PSS.
Southern Tier West Regional Planning and Development Board	Provide information on the Project and Article 10 process, intervenor funding, contact information, and discuss stakeholder initiatives that may be affected or promoted by the Project.	Initial correspondence no later than one month prior to submittal of PSS.
Chautauqua County Farm Bureau	Provide information on the Project and Article 10 process, intervenor funding, contact information, and discuss stakeholder initiatives that may be affected or promoted by the Project.	Initial correspondence no later than one month prior to submittal of PSS.
Concord Grape Belt Heritage Association	Provide information on the Project and Article 10 process, intervenor funding, contact information, and discuss stakeholder initiatives that may be affected or promoted by the Project.	Initial correspondence no later than one month prior to submittal of PSS.
Chautauqua County American Legion	Provide information on the Project and Article 10 process, intervenor funding, contact information, and discuss stakeholder initiatives that may be affected or promoted by the Project.	Initial correspondence no later than one month prior to submittal of PSS.
Cassadaga Lakes Association	Provide information on the Project and Article 10 process, intervenor funding, contact information, and discuss stakeholder initiatives that may be affected or promoted by the Project.	Initial correspondence no later than one month prior to submittal of PSS.
Chautauqua County Citizens for Responsible Wind Power	Provide information on the Project and Article 10 process, intervenor funding, contact information, and discuss stakeholder initiatives that may be affected or promoted by the Project.	Initial correspondence no later than one month prior to submittal of PSS.

Agency/Municipality	Goals of Consultation	Plan/Method and General Schedule for Consultation ¹
Chautauqua County Environmental Management Council	Provide information on the Project and Article 10 process, intervenor funding, contact information, and discuss stakeholder initiatives that may be affected or promoted by the Project.	Initial correspondence no later than one month prior to submittal of PSS.
Concerned Citizens of Cattaraugus County	Provide information on the Project and Article 10 process, intervenor funding, contact information, and discuss stakeholder initiatives that may be affected or promoted by the Project.	Initial correspondence no later than one month prior to submittal of PSS.
National Grid	Provide information on the Project and Article 10 process, intervenor funding, contact information, and discuss stakeholder initiatives that may be affected or promoted by the Project.	Initial correspondence no later than one month prior to submittal of PSS.
Steuben Rural Electric Cooperative	Provide information on the Project and Article 10 process, intervenor funding, contact information, and discuss stakeholder initiatives that may be affected or promoted by the Project.	Initial correspondence no later than one month prior to submittal of PSS.
Empire Energy	Provide information on the Project and Article 10 process, intervenor funding, contact information, and discuss stakeholder initiatives that may be affected or promoted by the Project.	Initial correspondence no later than one month prior to submittal of PSS.
National Fuel Gas	Provide information on the Project and Article 10 process, intervenor funding, contact information, and discuss stakeholder initiatives that may be affected or promoted by the Project.	Initial correspondence no later than one month prior to submittal of PSS.
AT&T	Provide information on the Project and Article 10 process, intervenor funding, contact information, and discuss stakeholder initiatives that may be affected or promoted by the Project.	Initial correspondence no later than one month prior to submittal of PSS.
Verizon	Provide information on the Project and Article 10 process, intervenor funding, contact information, and discuss stakeholder initiatives that may be affected or promoted by the Project.	Initial correspondence no later than one month prior to submittal of PSS.
Windstream	Provide information on the Project and Article 10 process, intervenor funding, contact information, and discuss stakeholder initiatives that may be affected or promoted by the Project.	Initial correspondence no later than one month prior to submittal of PSS.

Agency/Municipality	Goals of Consultation	Plan/Method and General Schedule for Consultation ¹
Alstar Ambulance	Provide information on the Project and Article 10 process, intervenor funding, contact information, and discuss stakeholder initiatives that may be affected or promoted by the Project.	Initial correspondence no later than one month prior to submittal of PSS.
WCA Services Corporation	Provide information on the Project and Article 10 process, intervenor funding, contact information, and discuss stakeholder initiatives that may be affected or promoted by the Project.	Initial correspondence no later than one month prior to submittal of PSS.
Silver Creek Emergency Squad	Provide information on the Project and Article 10 process, intervenor funding, contact information, and discuss stakeholder initiatives that may be affected or promoted by the Project.	Initial correspondence no later than one month prior to submittal of PSS.
Rural Metro Corporation	Provide information on the Project and Article 10 process, intervenor funding, contact information, and discuss stakeholder initiatives that may be affected or promoted by the Project.	Initial correspondence no later than one month prior to submittal of PSS.
Cherry Creek Sno Goers	Provide information on the Project and Article 10 process, intervenor funding, contact information, and discuss stakeholder initiatives that may be affected or promoted by the Project.	Initial correspondence no later than one month prior to submittal of PSS.
Chautauqua Trail Riders	Provide information on the Project and Article 10 process, intervenor funding, contact information, and discuss stakeholder initiatives that may be affected or promoted by the Project.	Initial correspondence no later than one month prior to submittal of PSS.
Cattaraugus/Chautauqua Chapter of the NYS Horse Council	Provide information on the Project and Article 10 process, intervenor funding, contact information, and discuss stakeholder initiatives that may be affected or promoted by the Project.	Initial correspondence no later than one month prior to submittal of PSS.
Lily Dale Assembly	Provide information on the Project and Article 10 process, intervenor funding, contact information, and discuss stakeholder initiatives that may be affected or promoted by the Project.	Initial correspondence no later than one month prior to submittal of PSS.

¹ The Applicant intends to utilize the PIP process to engage stakeholders and solicit input to promote the development of a robust PSS and Application. Early outreach, consultation and engagement will be paramount to this effort and will be documented in the Meeting Log, which will be regularly updated.

Exhibit C

Example Meeting Log

