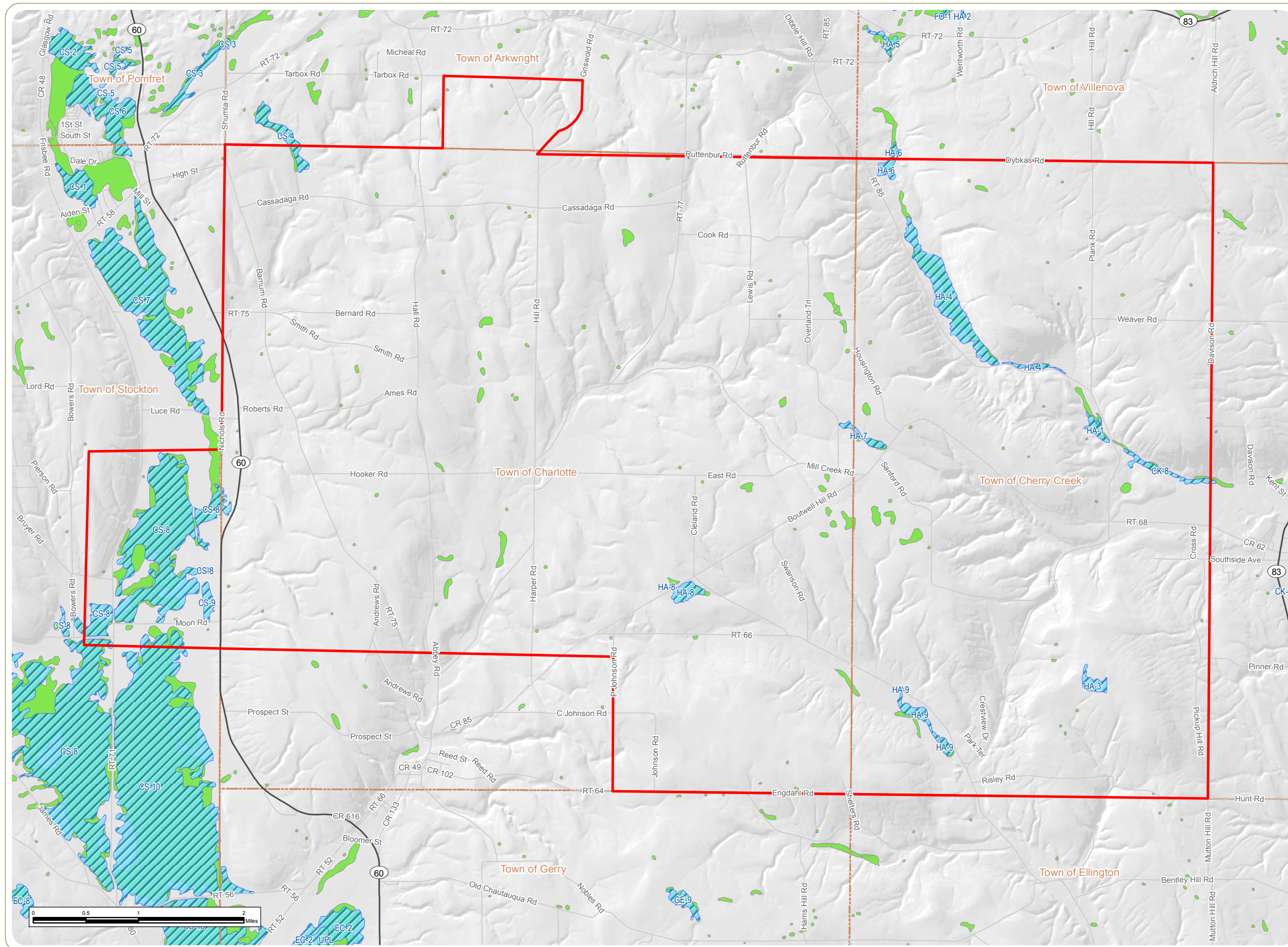



Cassadaga Wind Project

Towns of Charlotte, Cherry Creek, Arkwright, and Stockton
Chautauqua County, New York

Figure 4: Mapped Wetlands

September 2015



-  NYS DEC Wetland
-  NWI Wetland
-  Town Boundary
-  Project Boundary

- Notes:**
1. Basemap: Hillshade derived from DEM data and ESRI StreetMap North America, 2008.
 2. This is a color graphic. Reproduction in grayscale may misrepresent the data.

everpower





www.edrdpc.com