

Cassadaga Wind Project's PRE-CONSTRUCTION NOTICE OCTOBER 2019

This notice announces that, on or about October 21st, 2019, Cassadaga Wind LLC (Cassadaga Wind or Certificate Holder) will begin civil construction of the 125.5-megawatt wind-powered electric generation project located in the Towns of Charlotte, Cherry Creek, and Stockton, Chautauqua County, NY (Facility).

Pursuant to the Article 10 process, this notice is being provided in accordance with Certificate Condition Nos. 13 & 14 in the *Order Granting Certificate of Environmental Compatibility and Public Need, with Condition*, issued by the New York State Board on Electric Generation Siting and the Environment, on January 17, 2018. A copy of the Order (and all public documents filed in this proceeding) may be accessed electronically at the Department of Public Service website, www.dps.ny.gov. To access documents, go to "Search," type the case number, "14-F-0490," and click "Search by Case Number".

BRIEF DESCRIPTION OF THE PROJECT

Cassadaga Wind will construct the Cassadaga Wind Project, a wind energy generation facility and associated necessary infrastructure) in the Towns of Charlotte, Cherry Creek, and Stockton in Chautauqua County, New York. The Facility will consist of 37 wind turbines, with a total anticipated generating capacity of 125.5 MW. In addition to the turbines, the Facility will include construction and operation of one permanent meteorological (met) tower, a system of gravel access roads, above- and belowground 34.5 kilovolt (kV) collection lines, an overhead 115 kV generator lead line, a collection substation, a point of interconnection (POI) substation, and an operations and maintenance (O&M) building. Along with these permanent components, construction of the Facility will also require two temporary construction staging area (laydown yard) to store Facility components, accommodate construction trailers, and provide parking for construction vehicles.

CONSTRUCTION SCHEDULE

Construction is scheduled to begin on or about October 21st, 2019. In the Town of Charlotte construction work hours will be limited to 7:00 am to 8:00 pm on Monday through Saturday and 8:00 am to 8:00 pm on Sunday. In the Town of Cherry Creek construction work hours will be limited to 6:00 am to 9:00 pm on Monday through Sunday.

PROJECT DEVELOPMENT MANAGER AND CONSTRUCTION MANAGER

Project Development Manager: Leah Grossman, Cassadaga Wind
150 North Riverside Plaza, Suite 4240, Chicago, IL 60606

Leah.Grossman@innogy.com

Construction Manager: Jade Walton, Cassadaga Wind
1251 Waterfront Place, 3rd Floor, Pittsburgh, PA 15222

Jade.Walton@innogy.com

Site Construction Manager: Randy Buntjer, Cassadaga Wind
1251 Waterfront Place, 3rd Floor, Pittsburgh, PA 15222

Randy.Buntjer@innogy.com

Website: <https://iam.innogy.com/en/about-innogy/innogy-innovation-technology/renewables/onshore/innogy-onshore-construction-projects/cassadaga>

Toll Free Number: 1-844-731-3932

THE PROCEDURE AND CONTACT INFORMATION FOR REGISTERING A COMPLAINT

Complaints by neighboring residents or others may be made through the following channels:

1. By calling the Toll Free Number: 1-844-731-3932;

Cassadaga Wind Project's
PRE-CONSTRUCTION NOTICE
OCTOBER 2019

2. By writing to Cassadaga Wind at its email address CassadagaMessages@Innogy.com; or mailing complaints to its local address or at its principal place of business; or
3. By making the complaint in person at Cassadaga Wind's construction office, once established, which is anticipated to be located at the corner of Cleland and Boutwell roads in the Town of Charlotte.

CONTACT INFORMATION

Contact information for Board on Electric Generation Siting and the Environment and Public Service Commission:

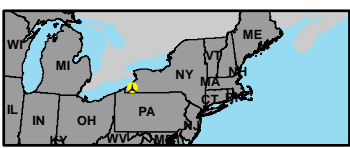
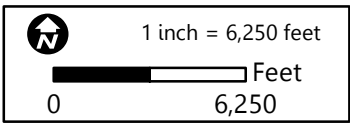
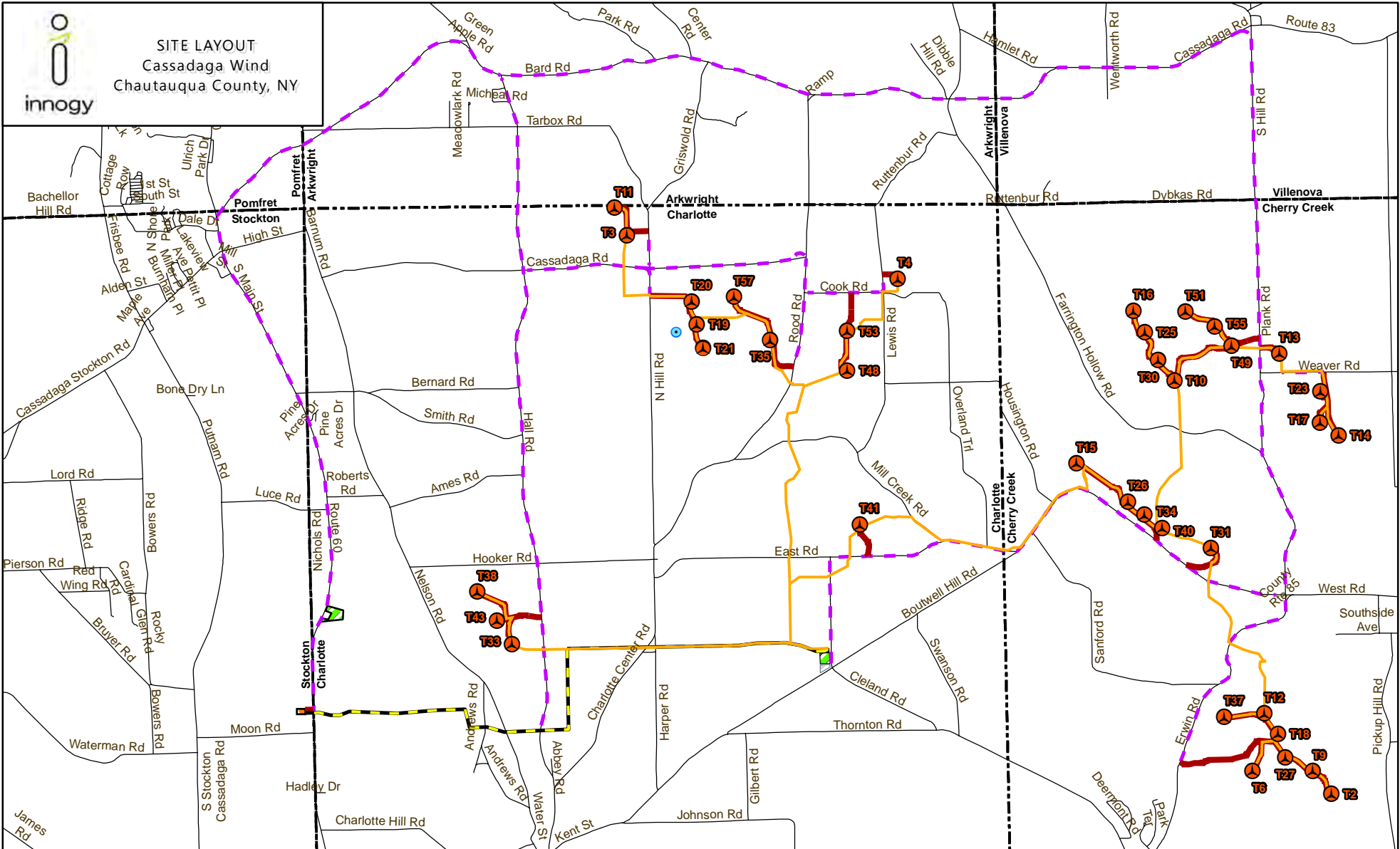
Honorable Kathleen H. Burgess
Board on Electric Generation Siting and the
Environment
Empire State Plaza
Agency Building 3
Albany, New York 12223-1350
secretary@dps.ny.gov

Contact information for Article 10 Coordinator:
James Denn, NYS Department of Public Service
3 Empire State Plaza
Albany, NY 12223
Tel. No. (518) 474-7080
james.denn@dps.ny.gov

MAP OF THE PROJECT and TRANSPORTATION ROUTES (attached)



SITE LAYOUT
Cassadaga Wind
Chautauqua County, NY



Project Infrastructure		Existing Infrastructure	
	Turbine		Road
	Permanent Met Tower		Boundary
	Collection		Town
	Generator Lead Line		
	Access Road		
	Delivery Route		
	O&M Building		
	Laydown Yard		
	Collector Substation		
	POI Substation		

Map created by Innogy Renewables US, LLC on 9/25/2019
Using ESRI ArcGIS Desktop Standard 10.5

Projected Coordinate System:
NAD 1983 UTM Zone 17N

Information on this map is provided for purposes of discussion and visualization only.
Sources:
Innogy, Esri