

Cassadaga Wind Project

Towns of Arkwright, Charlotte, Cherry Creek, and Stockton - Chautauqua County, New York

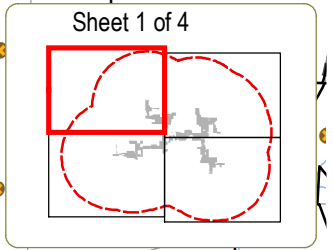
Article 10 Application

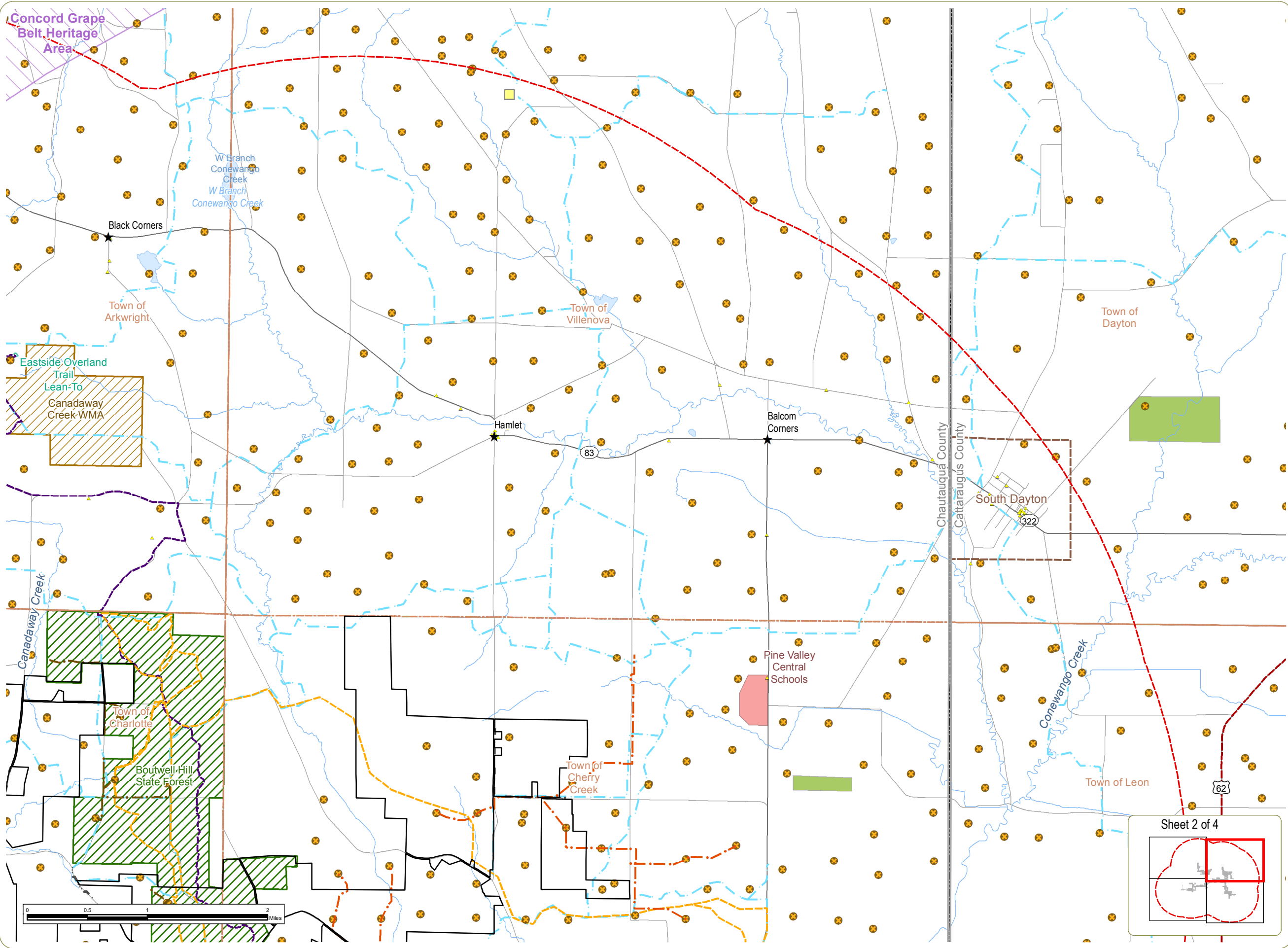
Figure 4-7: Recreational Areas and Other Sensitive Land Uses

April 2016

- ◆ Waterfall
- ★ Hamlet
- ▲ NRHP-Eligible Resource
- Existing Oil or Gas Well
- Existing Electric Substation
- Earl Cardot Eastside Overland Trail
- Snowmobile Trail
- Water Trail
- Existing Electric Utility Distribution Line
- Existing Electric Transmission Line
- Existing Cable and Fiber Optic Line
- Existing Natural Gas Pipeline
- Facility Site
- 5 Mile Facility Buffer
- Wildlife Management Area
- Other Local Resources
- Local Park
- State Heritage Area
- Conservation Easement
- Wetlands Reserve Program

Notes:
 1. Basemap: ESRI StreetMap North America, 2008.
 2. This is a color graphic. Reproduction in grayscale may misrepresent the data.





Cassadaga Wind Project

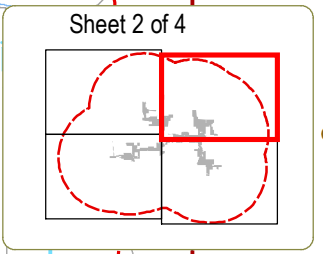
Towns of Arkwright, Charlotte, Cherry Creek, and Stockton - Chautauqua County, New York

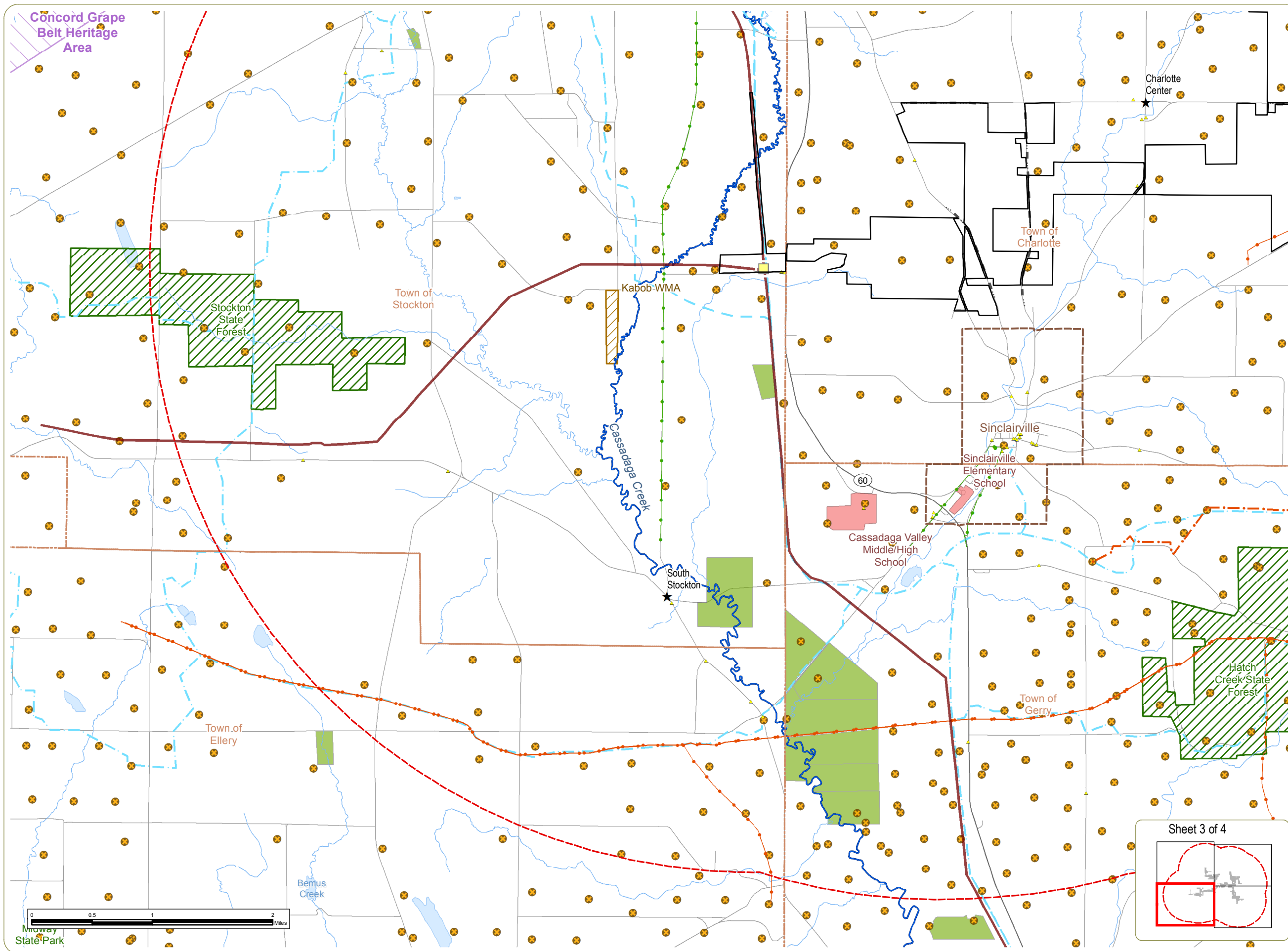
Article 10 Application Figure 4-7: Recreational Areas and Other Sensitive Land Uses

April 2016

- ★ Hamlet
- ▲ NRHP-Eligible Resource
- Existing Oil or Gas Well
- Existing Electric Substation
- Amish Trail
- Earl Cardot Eastside Overland Trail
- Equestrian Trail
- Snowmobile Trail
- Existing Electric Utility Distribution Line
- Existing and Proposed Gas Line
- Utilities in Boutwell Hill
- State Forest - Gas Collection Line
- Facility Site
- 5 Mile Facility Buffer
- ▨ Wildlife Management Area
- ▨ Other Local Resources
- ▨ School
- ▨ NYSDEC Land
- ▨ State Heritage Area
- ▨ Conservation Easement
- ▨ Wetlands Reserve Program

Notes:
 1. Basemap: ESRI StreetMap North America, 2008.
 2. This is a color graphic. Reproduction in grayscale may misrepresent the data.





Cassadaga Wind Project

Towns of Arkwright, Charlotte, Cherry Creek, and Stockton - Chautauqua County, New York

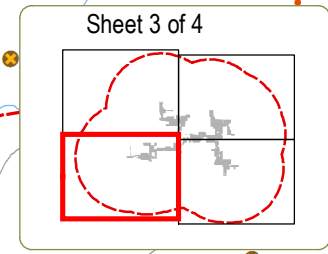
Article 10 Application

Figure 4-7: Recreational Areas and Other Sensitive Land Uses

- April 2016
- ★ Hamlet
 - ▲ NRHP-Eligible Resource
 - Existing Oil or Gas Well
 - Existing Electric Substation
 - Snowmobile Trail
 - Water Trail
 - Existing Electric Utility Distribution Line
 - Existing Electric Transmission Line
 - Existing Cable and Fiber Optic Line
 - Existing Natural Gas Pipeline
 - Existing and Proposed Gas Line
 - Facility Site
 - 5 Mile Facility Buffer
 - Wildlife Management Area
 - State Park
 - NRHP-Listed Site
 - School
 - NYSDEC Land
 - State Heritage Area
 - Conservation Easement
 - Wetlands Reserve Program

Notes:

1. Basemap: ESRI StreetMap North America, 2008.
2. This is a color graphic. Reproduction in grayscale may misrepresent the data.



Cassadaga Wind Project

Towns of Arkwright, Charlotte, Cherry Creek, and Stockton - Chautauqua County, New York

Article 10 Application

Figure 4-7: Recreational Areas and Other Sensitive Land Uses

April 2016

- ★ Hamlet
- ▲ NRHP-Eligible Resource
- Existing Oil or Gas Well
- - - Amish Trail
- - - Earl Cardot Eastside Overland Trail
- - - Equestrian Trail
- - - Mountain Bike Trail
- - - Snowmobile Trail
- - - National Rivers Inventory
- - - Water Trail
- - - Existing Electric Utility Distribution Line
- - - Existing Natural Gas Pipeline
- - - Existing and Proposed Gas Line
- Utilities in Boutwell Hill State Forest - Gas Collection Line
- Facility Site
- 5 Mile Facility Buffer
- NRHP-Listed Site
- Other Local Resource
- Local Park
- NYSDEC Land
- Conservation Easement
- Clear Creek
- Wetlands Reserve Program

Notes:
 1. Basemap: ESRI StreetMap North America, 2008.
 2. This is a color graphic. Reproduction in grayscale may misrepresent the data.

