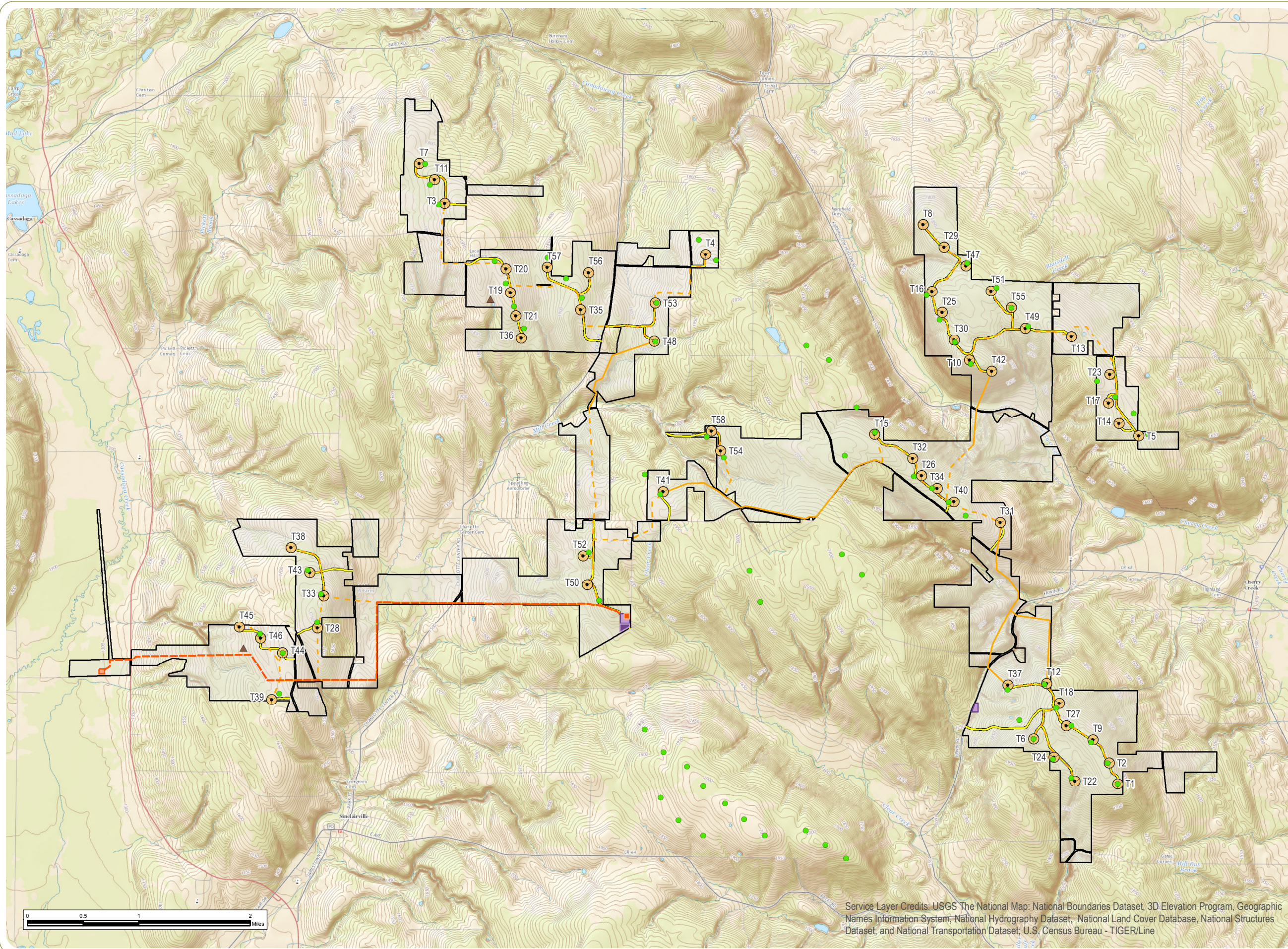


Cassadaga Wind Project

Towns of Arkwright, Charlotte, Cherry Creek, and Stockton - Chautauqua County, New York

Article 10 Application Figure 3-1: Proposed Major Electric Generating Facility Locations

April 2016



- Wind Turbine
- Alternative Turbine
- Permanent Meteorological Tower
- 115 kV Generator Lead Line
- Underground Collection Line
- Overhead Collection Line
- Access Road
- POI Substation
- Collection Substation
- O&M Building
- Laydown Yard/Staging Area
- Facility Site

Notes:
 1. Basemap: "USGS TNM Topo Base Map" displayed via the USGS Topo Map Service.
 2. If Facility construction requires use of a temporary concrete batch plant, it will be located at the Laydown Yard/Staging Area.
 3. This is a color graphic. Reproduction in grayscale may misrepresent the data.



www.edrdpc.com

Service Layer Credits: USGS The National Map: National Boundaries Dataset, 3D Elevation Program, Geographic Names Information System, National Hydrography Dataset, National Land Cover Database, National Structures Dataset, and National Transportation Dataset; U.S. Census Bureau - TIGER/Line