

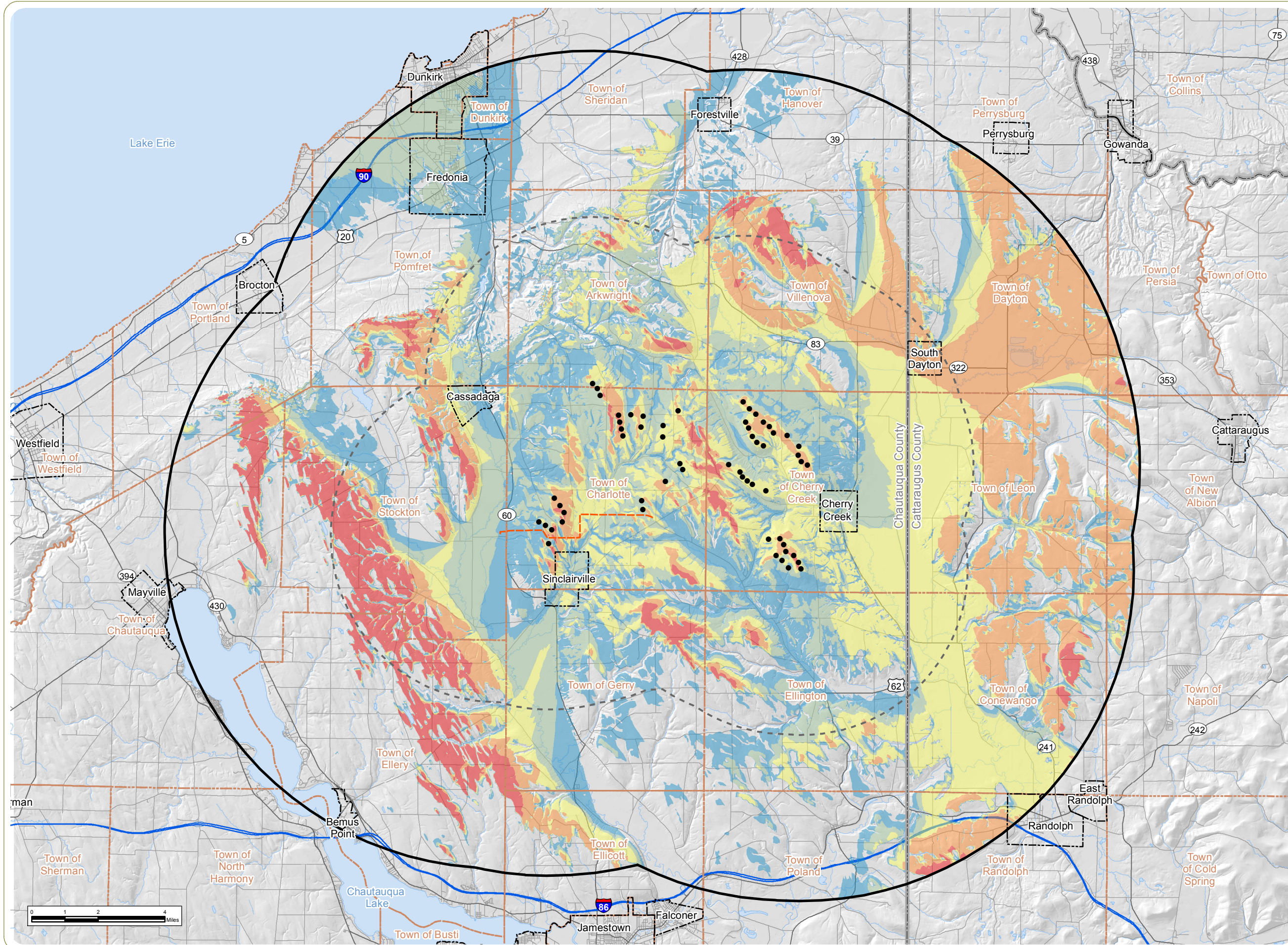
# Cassadaga Wind Project

Towns of Arkwright, Charlotte, Cherry Creek, and Stockton - Chautauqua County, New York

## Article 10 Application Figure 24-7: Viewshed Analysis

Sheet 3 of 7: Wind Turbine FAA Warning Light Visibility Based on Topography Only

April 2016



- Wind Turbine
- 115 kV Generator Lead Line
- Number of Turbines Potentially Visible
  - 1-12 Turbines Visible
  - 13-24 Turbines Visible
  - 25-36 Turbines Visible
  - 37-48 Turbines Visible
  - 49-58 Turbines Visible
- - - 5-Mile Study Area
- 10-Mile Study Area
- - - City/Village Boundary
- - - Town Boundary
- County Boundary

- Notes:**
1. Basemap: Hillshade derived from USGS 10-meter DEM data and ESRI StreetMap North America, 2008.
  2. Potential warning light visibility based on topography only. Screening effects of buildings, trees or other factors are not accounted for.
  3. Viewshed Analysis based on FAA warning light height of 99 meters (325 feet).
  4. This is a color graphic. Reproduction in grayscale may misrepresent the data.



www.edrdpc.com