

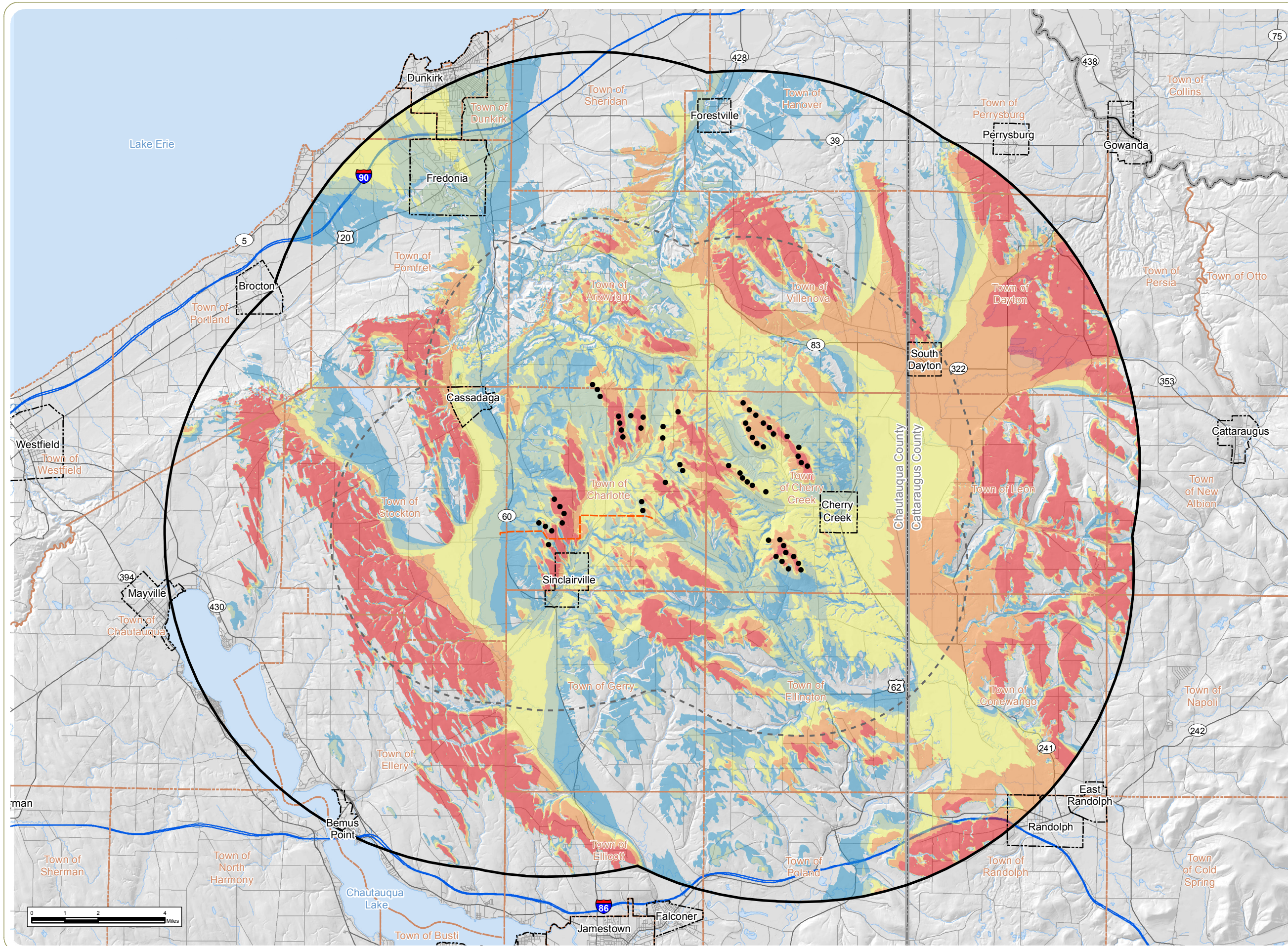
Cassadaga Wind Project

Towns of Arkwright, Charlotte, Cherry Creek, and Stockton - Chautauqua County, New York

Article 10 Application Figure 24-7: Viewshed Analysis

Sheet 1 of 7: Wind Turbine Blade Tip Visibility Based on Topography Only

April 2016



- Wind Turbine
- 115 kV Generator Lead Line
- Number of Turbines Potentially Visible
- 1-12 Turbines Visible
- 13-24 Turbines Visible
- 25-36 Turbines Visible
- 37-48 Turbines Visible
- 49-58 Turbines Visible
- - - 5-Mile Study Area
- 10-Mile Study Area
- City/Village Boundary
- Town Boundary
- County Boundary

Notes:
 1. Basemap: Hillshade derived from USGS 10-meter DEM data and ESRI StreetMap North America, 2008.
 2. Potential turbine visibility based on topography only. Screening effects of buildings, trees or other factors are not accounted for.
 3. Viewshed Analysis based on maximum blade tip height of 152.4 meters (500 feet).
 4. This is a color graphic. Reproduction in grayscale may misrepresent the data.



www.edrdpc.com