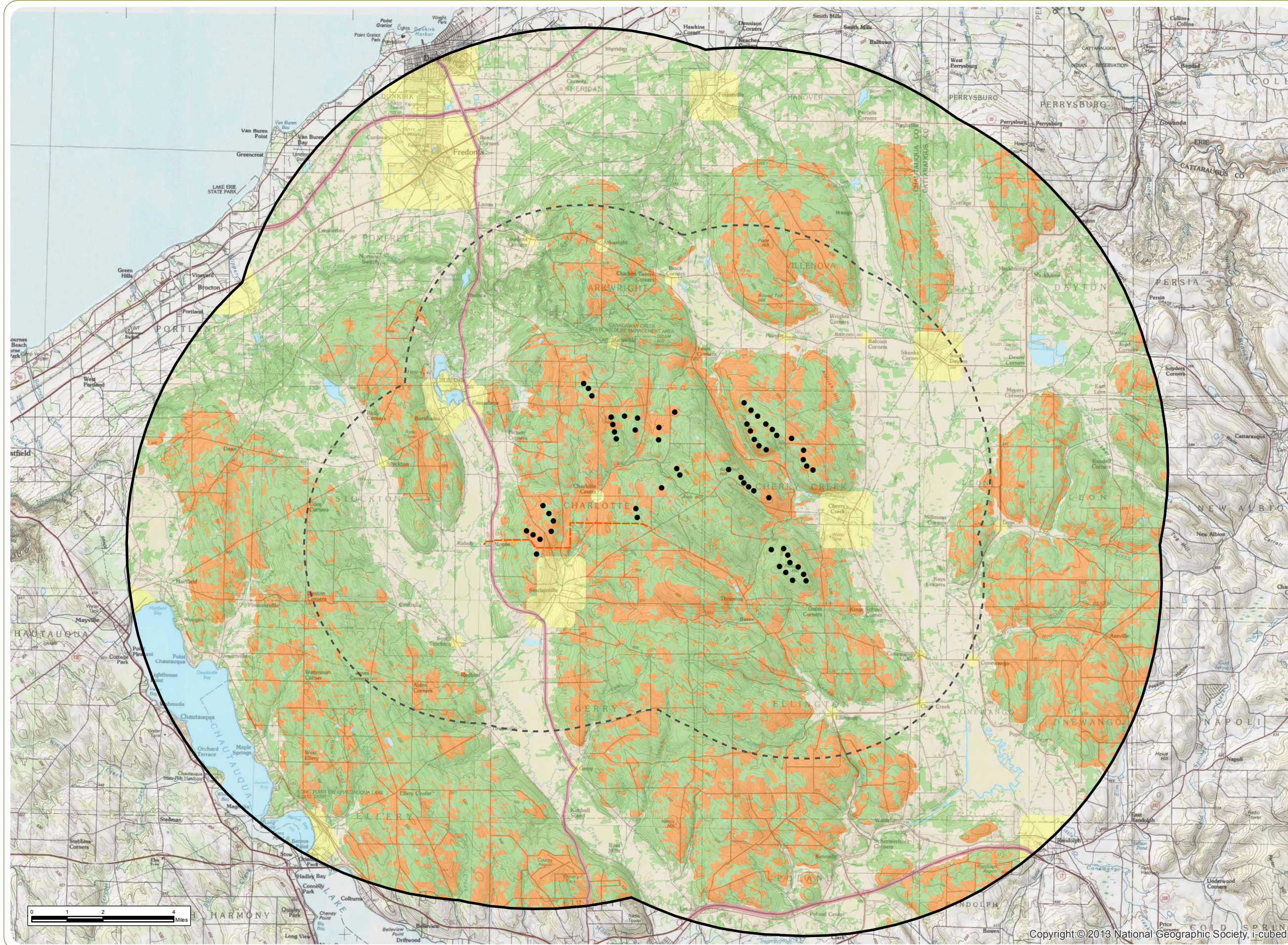


Cassadaga Wind Project

Towns of Arkwright, Charlotte, Cherry Creek, and Stockton - Chautauqua County, New York

Article 10 Application
Figure 24-2: Landscape Similarity Zones

April 2016



- Wind Turbine
 - 115 kV Generator Lead Line
 - - - 5-Mile Study Area
 - ▭ 10-Mile Study Area
- Landscape Similarity Zones
- Forest
 - Village/Hamlet
 - Transportation Corridor
 - Rural Uplands/Ridgelines
 - Rural Valley
 - Waterfront/Open Water

Notes:
1. Basemap: ESRI ArcGIS Online "USA Topo Maps" Map Service.
2. This is a color graphic. Reproduction in grayscale may misrepresent the data.



www.edrpsc.com