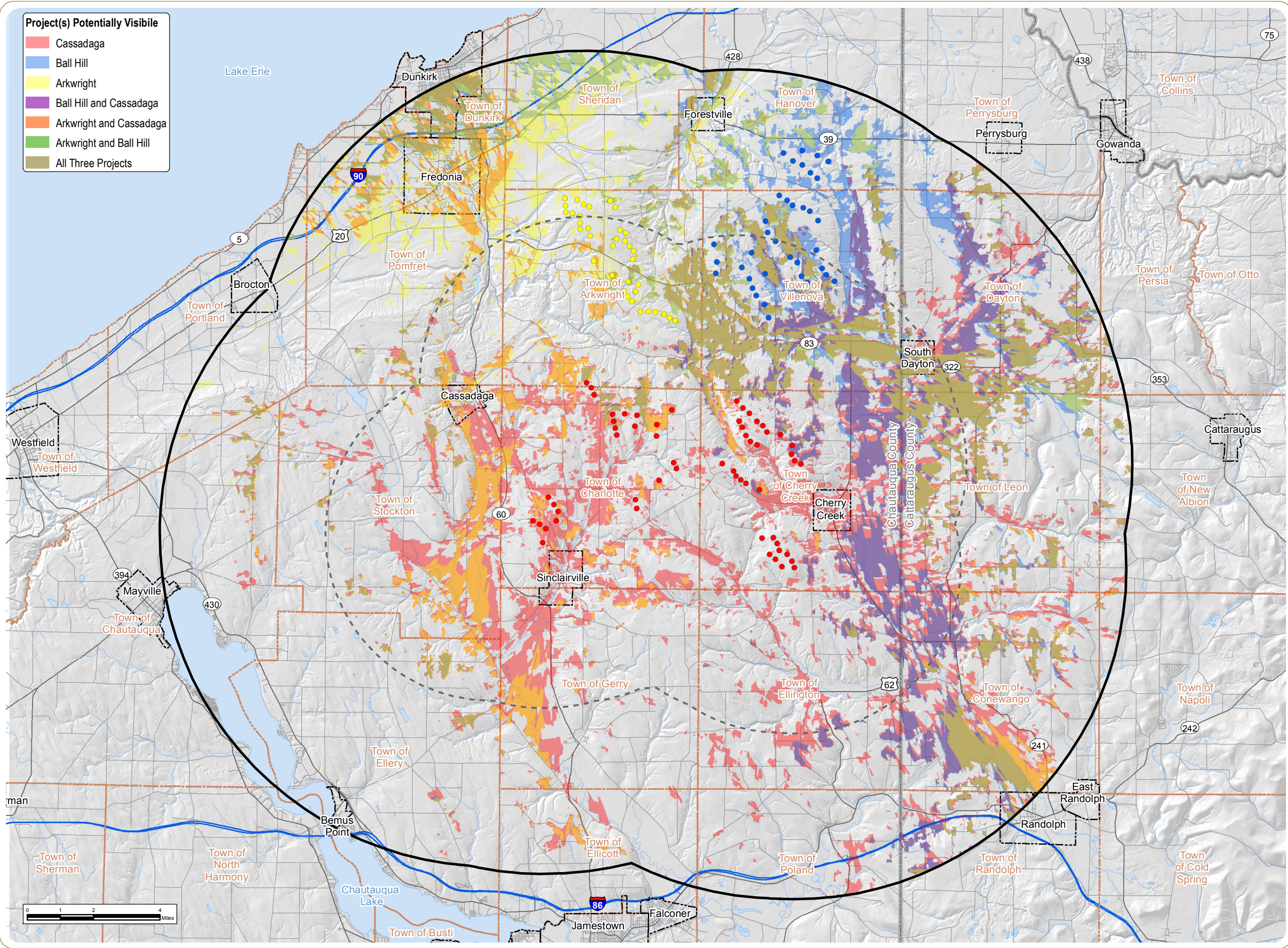


- Project(s) Potentially Visible**
- Cassadaga
 - Ball Hill
 - Arkwright
 - Ball Hill and Cassadaga
 - Arkwright and Cassadaga
 - Arkwright and Ball Hill
 - All Three Projects



Cassadaga Wind Project

Towns of Arkwright, Charlotte, Cherry Creek, and Stockton - Chautauqua County, New York

Article 10 Application
Figure 24-13: Cumulative Viewshed Analysis

April 2016

- Cassadaga Wind Turbine
- Arkwright Wind Turbine
- Ball Hill Wind Turbine
- 5-Mile Study Area
- 10-Mile Study Area
- City/Village Boundary
- Town Boundary
- County Boundary

Notes:

1. Basemap: Hillshade derived from USGS 10-meter DEM data and ESRI StreetMap North America, 2008.
2. Potential turbine visibility based on topography and screening effects of mapped forest vegetation.
3. Viewshed Analysis based on maximum blade tip height of 152.4 meters (500 feet) for Cassadaga and Ball Hill, and a maximum blade tip height of 150 meters (492 feet) for Arkwright, per the most recent publicly available specifications for each Project.
3. This is a color graphic. Reproduction in grayscale may misrepresent the data.



www.edrdpc.com