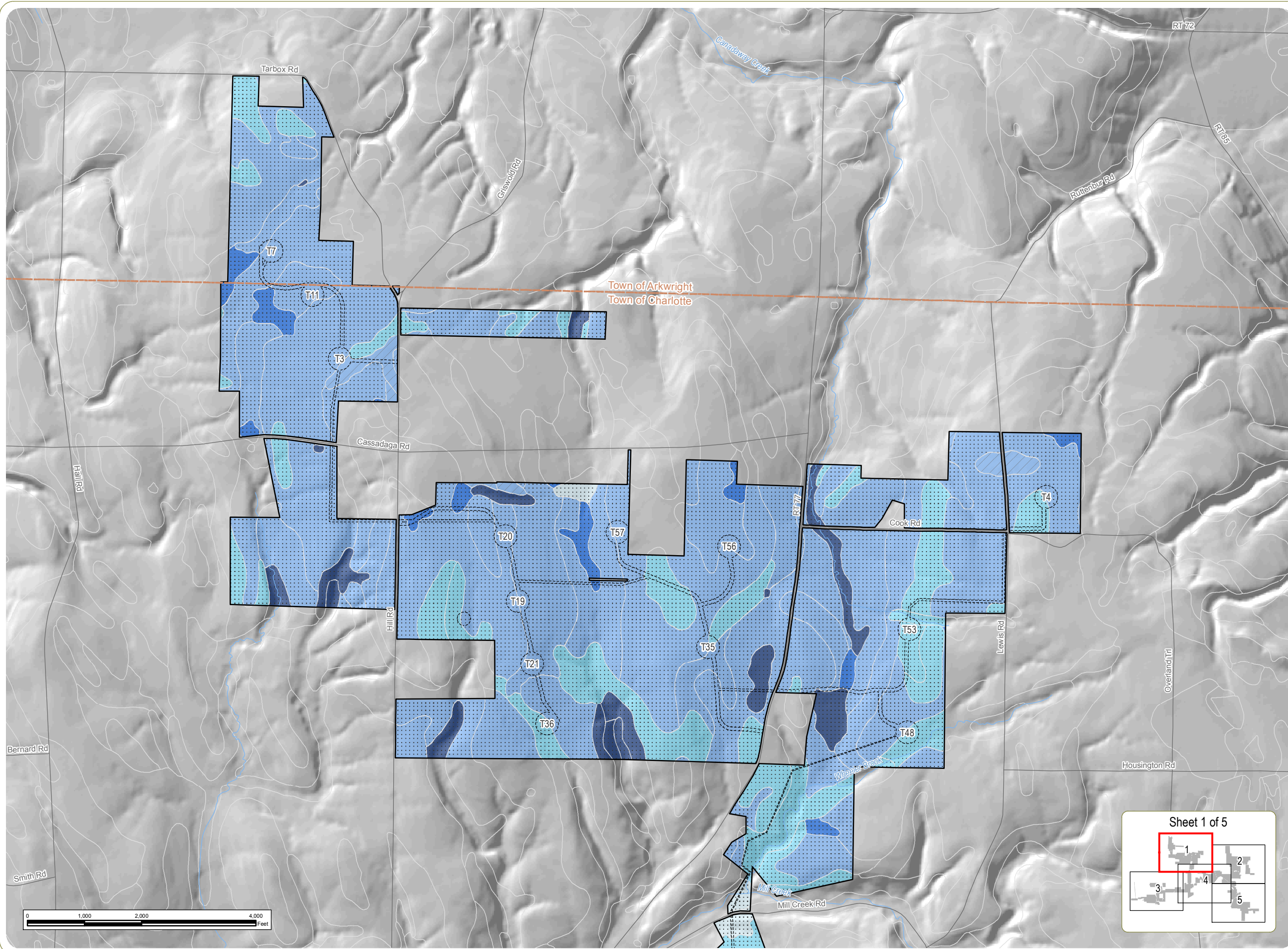


Cassadaga Wind Project

Towns of Arkwright, Charlotte, Cherry Creek, and Stockton - Chautauqua County, New York

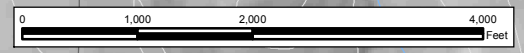
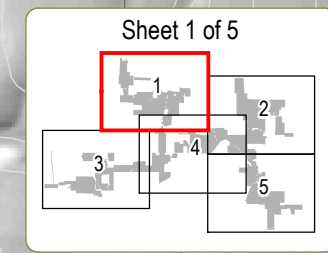
Article 10 Application Figure 23-1: Depth to Bedrock and High Water Table

April 2016



- Limit of Soil Disturbance
 - Soil Map Unit Boundary
 - Facility Site
 - Village Boundary
 - Town Boundary
- Depth to Bedrock**
- 26 in.
 - 30 in.
 - > 72 in.
- Depth to High Water Table**
- 0 in.
 - 1-10 in.
 - 11-20 in.
 - 21-30 in.
 - >50 in.

Notes:
 1. Basemap: Hillshade derived from 10-meter resolution USDA DEM data; ESRI StreetMap North America, 2008.
 2. This is a color graphic. Reproduction in grayscale may misrepresent the data.

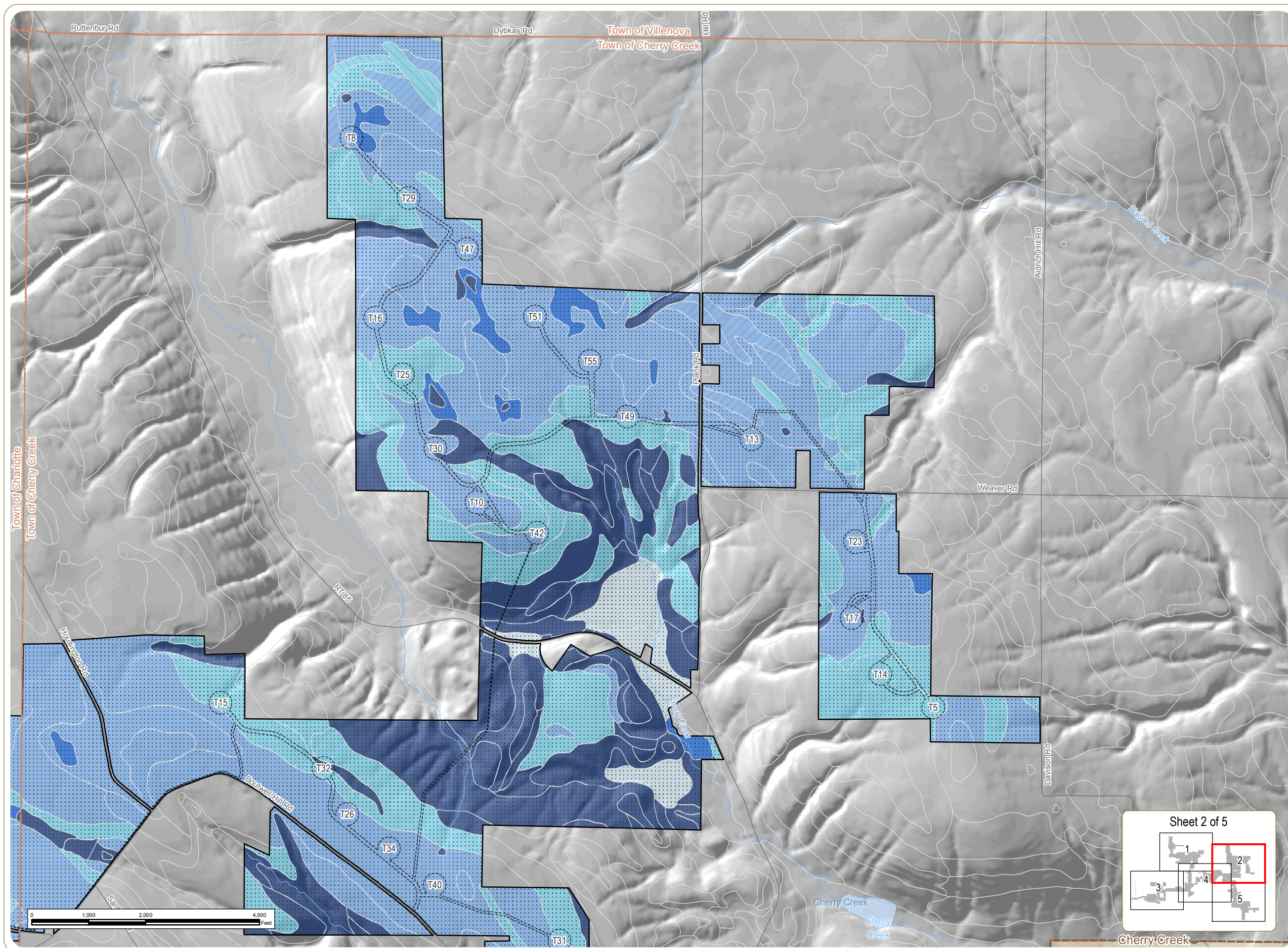


Cassadaga Wind Project

Towns of Arkwright, Charlotte, Cherry Creek, and Stockton - Chautauqua County, New York

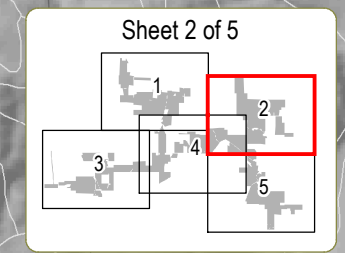
Article 10 Application Figure 23-1: Depth to Bedrock and High Water Table

April 2016



- Limit of Soil Disturbance
- Soil Map Unit Boundary
- Facility Site
- Village Boundary
- Town Boundary
- Depth to Bedrock**
- 26 in.
- 30 in.
- > 72 in.
- Depth to High Water Table**
- 0 in.
- 1-10 in.
- 11-20 in.
- 21-30 in.
- >50 in.

Notes:
 1. Basemap: Hillshade derived from 10-meter resolution USDA DEM data; ESRI StreetMap North America, 2008.
 2. This is a color graphic. Reproduction in grayscale may misrepresent the data.



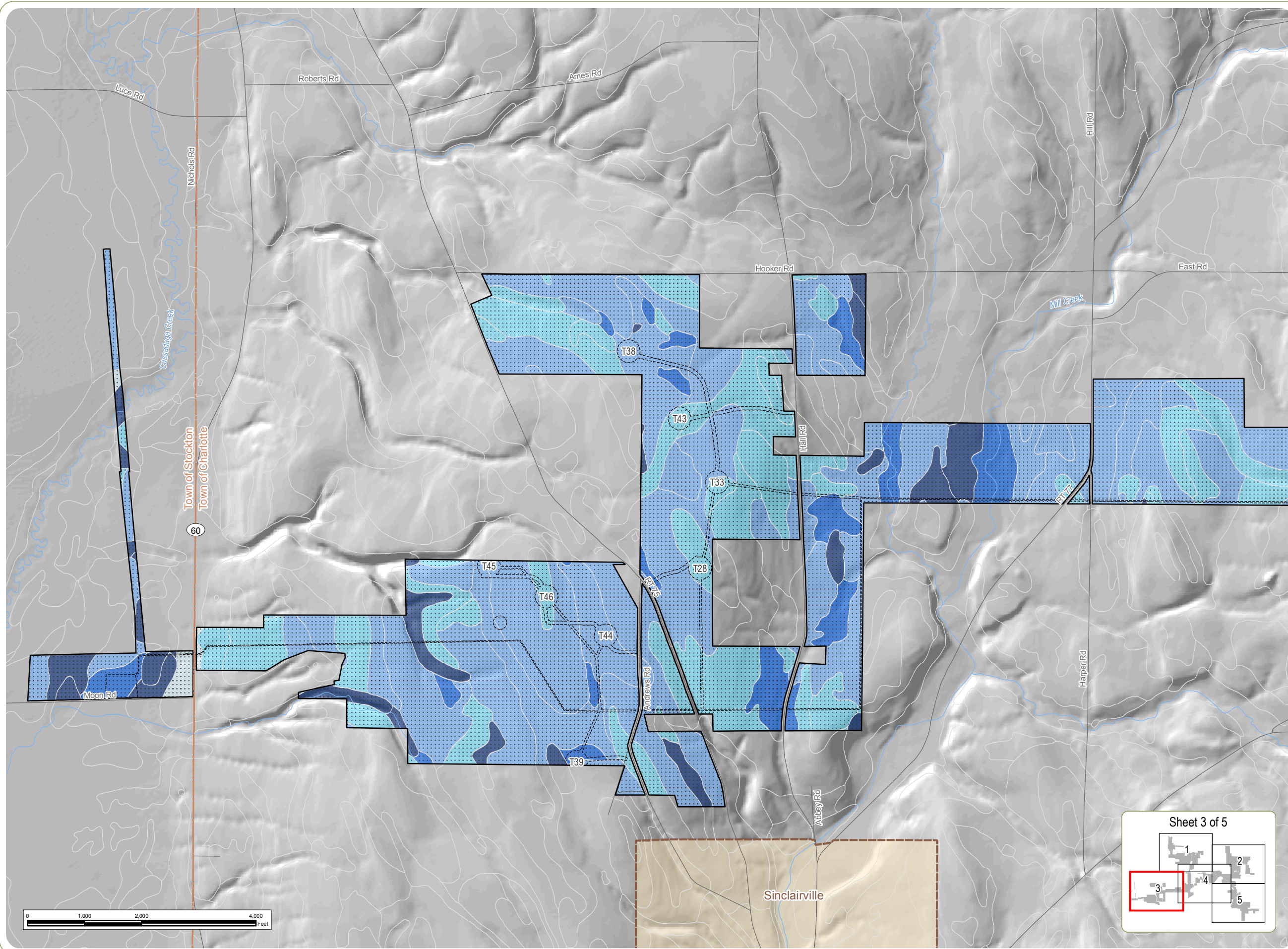
www.edrdpc.com

Cassadaga Wind Project

Towns of Arkwright, Charlotte, Cherry Creek, and Stockton - Chautauqua County, New York

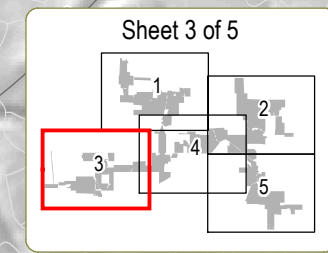
Article 10 Application Figure 23-1: Depth to Bedrock and High Water Table

April 2016



- Limit of Soil Disturbance
- Soil Map Unit Boundary
- Facility Site
- Village Boundary
- Town Boundary
- Depth to Bedrock**
- 26 in.
- 30 in.
- > 72 in.
- Depth to High Water Table**
- 0 in.
- 1-10 in.
- 11-20 in.
- 21-30 in.
- >50 in.

Notes:
 1. Basemap: Hillshade derived from 10-meter resolution USDA DEM data; ESRI StreetMap North America, 2008.
 2. This is a color graphic. Reproduction in grayscale may misrepresent the data.

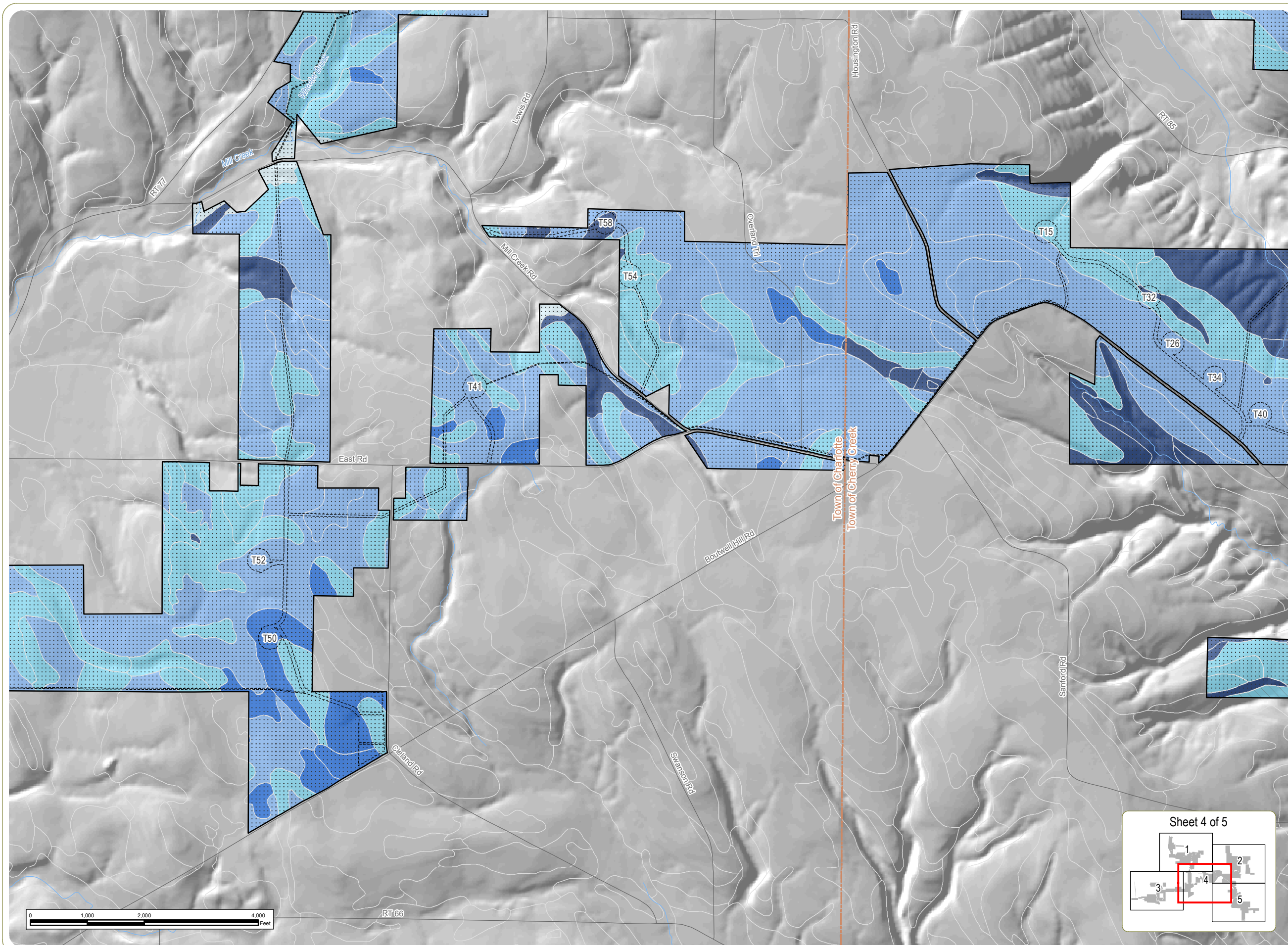


Cassadaga Wind Project

Towns of Arkwright, Charlotte, Cherry Creek, and Stockton - Chautauqua County, New York

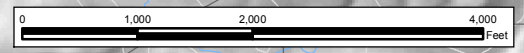
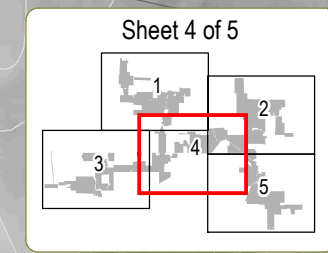
Article 10 Application Figure 23-1: Depth to Bedrock and High Water Table

April 2016



- Limit of Soil Disturbance
- Soil Map Unit Boundary
- Facility Site
- Village Boundary
- Town Boundary
- Depth to Bedrock**
- 26 in.
- 30 in.
- > 72 in.
- Depth to High Water Table**
- 0 in.
- 1-10 in.
- 11-20 in.
- 21-30 in.
- >50 in.

Notes:
 1. Basemap: Hillshade derived from 10-meter resolution USDA DEM data; ESRI StreetMap North America, 2008.
 2. This is a color graphic. Reproduction in grayscale may misrepresent the data.



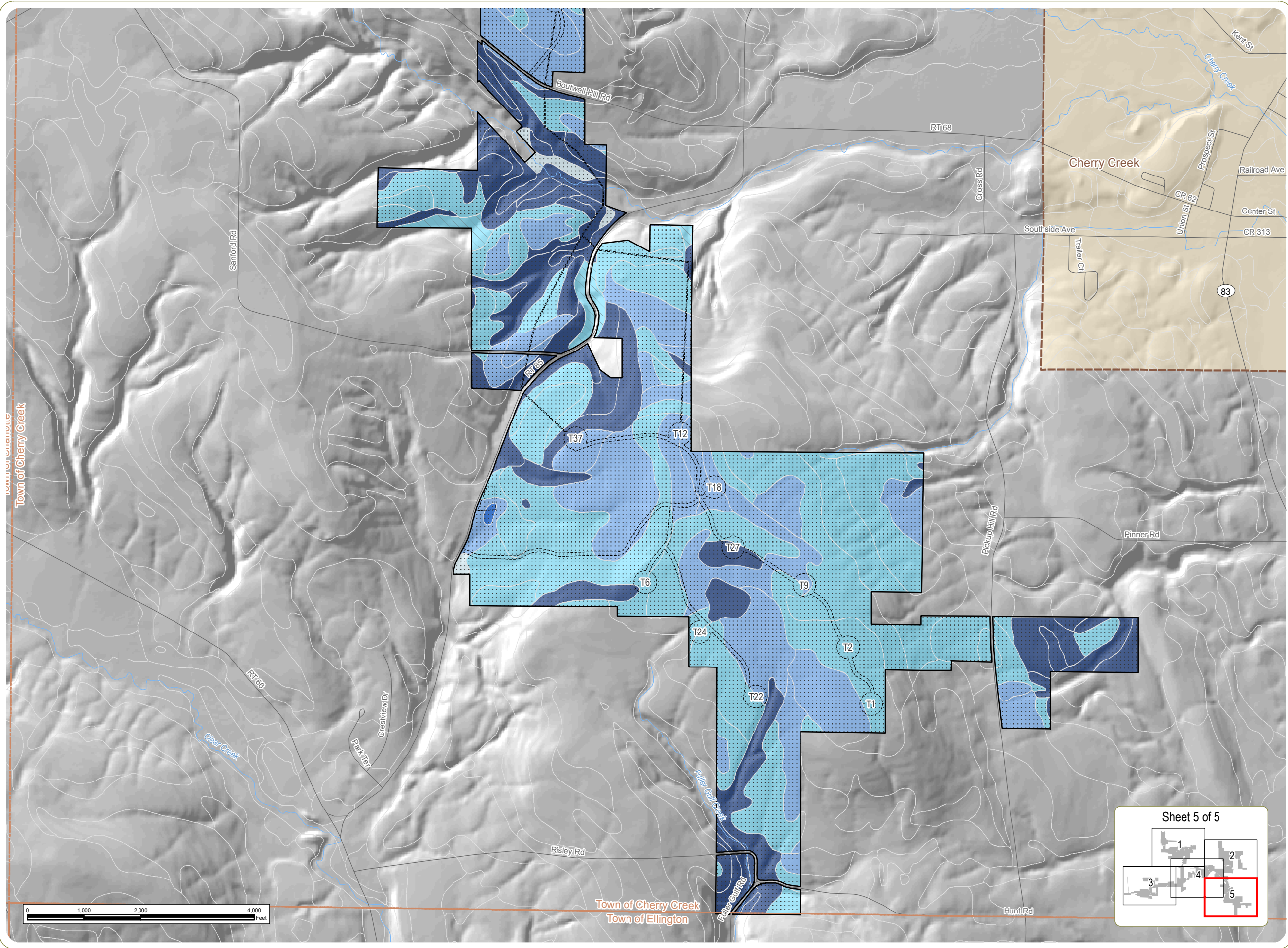
www.edrdpc.com

Cassadaga Wind Project

Towns of Arkwright, Charlotte, Cherry Creek, and Stockton - Chautauqua County, New York

Article 10 Application Figure 23-1: Depth to Bedrock and High Water Table

April 2016



- Limit of Soil Disturbance
- Soil Map Unit Boundary
- Facility Site
- Village Boundary
- Town Boundary

Depth to Bedrock

- 26 in.
- 30 in.
- > 72 in.

Depth to High Water Table

- 0 in.
- 1-10 in.
- 11-20 in.
- 21-30 in.
- > 50 in.

- Notes:**
1. Basemap: Hillshade derived from 10-meter resolution USDA DEM data; ESRI StreetMap North America, 2008.
 2. This is a color graphic. Reproduction in grayscale may misrepresent the data.

