

Cassadaga Wind Project

Towns of Arkwright, Charlotte, Cherry Creek, and Stockton - Chautauqua County, New York

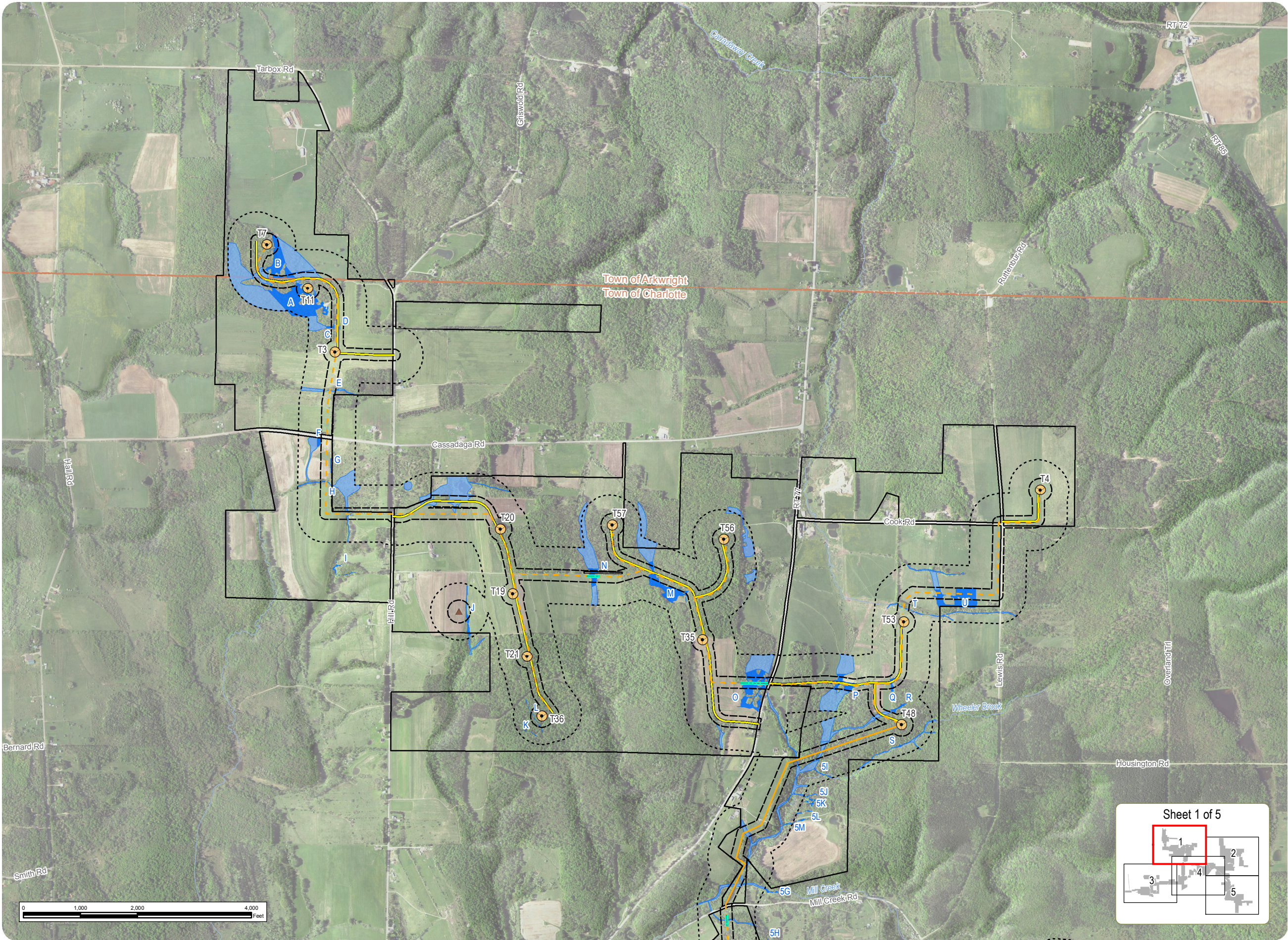
Article 10 Application
Figure 22-2: Delineated Wetlands

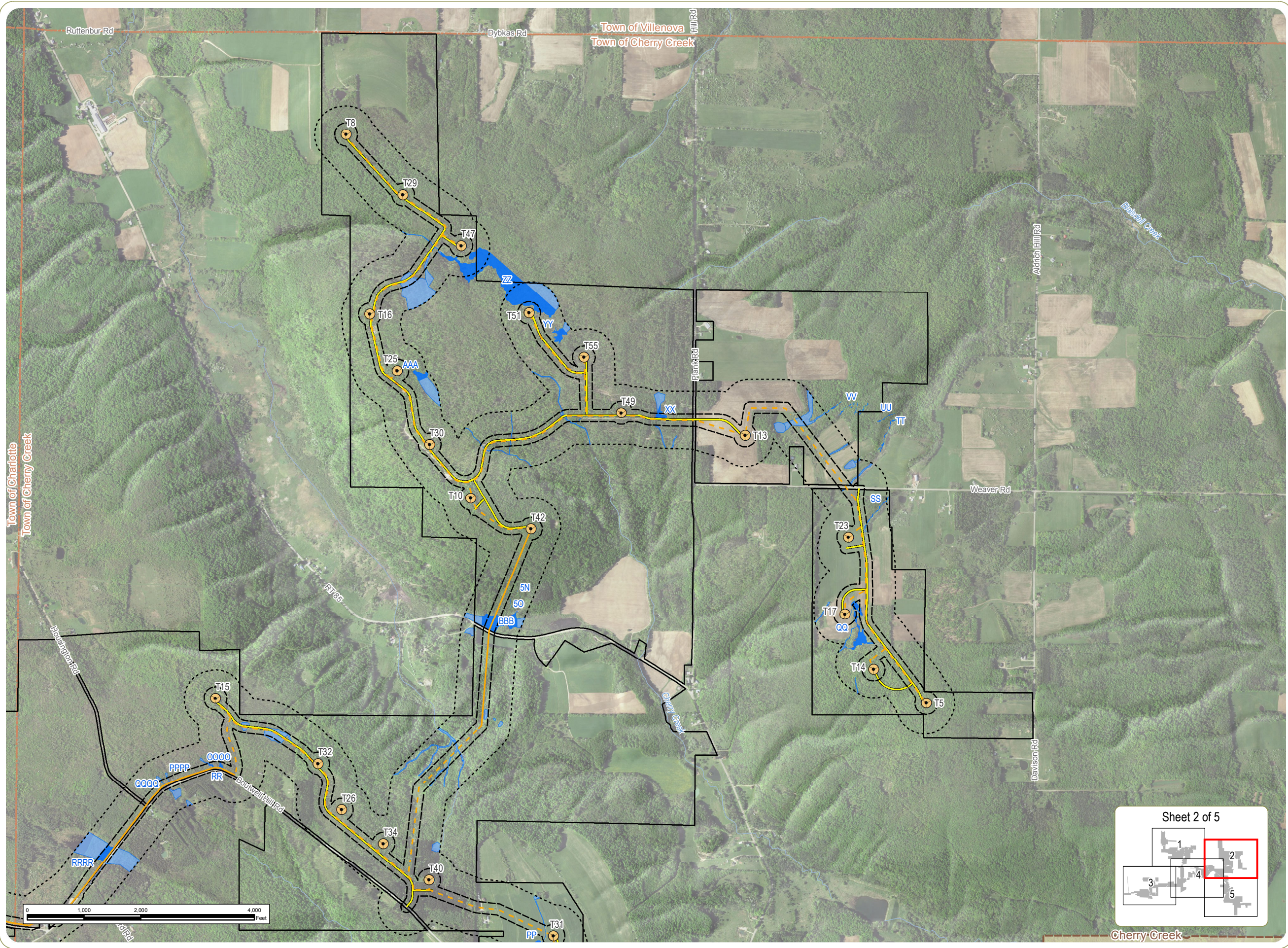
April 2016

- Wind Turbine
- Permanent Meteorological Tower
- Proposed Horizontal Directional Drill Location
- 115 kV Generator Lead Line
- Underground Collection Line
- Overhead Collection Line
- Access Road
- POI Substation
- Collection Substation
- O&M Building
- Laydown Yard/Staging Area
- Delineated Wetland/Stream
- Approximate Wetland/Stream
- 200-Foot Delineation Study Area
- 1,000-Foot Wetland Study Area
- Facility Site
- City/Village Boundary
- Town Boundary

Notes:
1. Basemap: USDA Imagery: USDA FSA NAIP "2015 New York 0.5m" Map Service Layer; Hillshade derived from 10-meter resolution USGS DEM data; ESRI Street Map North America, 2008.
2. If Facility construction requires use of a temporary concrete batch plant, it will be located at the Laydown Yard/Staging Area.
3. This is a color graphic. Reproduction in grayscale may misrepresent the data.

everpower™





Cassadaga Wind Project

Towns of Arkwright, Charlotte, Cherry Creek, and Stockton - Chautauqua County, New York

Article 10 Application Figure 22-2: Delineated Wetlands

April 2016

- Wind Turbine
- Permanent Meteorological Tower
- Proposed Horizontal Directional Drill Location
- 115 kV Generator Lead Line
- Underground Collection Line
- Overhead Collection Line
- Access Road
- POI Substation
- Collection Substation
- O&M Building
- Laydown Yard/Staging Area
- Delineated Wetland/Stream
- Approximate Wetland/Stream
- 200-Foot Delineation Study Area
- 1,000-Foot Wetland Study Area
- Facility Site
- City/Village Boundary
- Town Boundary

Notes:
1. Basemap: USDA Imagery: USDA FSA NAIP "2015 New York 0.5m" Map Service Layer; Hillshade derived from 10-meter resolution USGS DEM data; ESRI Street Map North America, 2008.
2. If Facility construction requires use of a temporary concrete batch plant, it will be located at the Laydown Yard/Staging Area.
3. This is a color graphic. Reproduction in grayscale may misrepresent the data.

everpower™

Cassadaga Wind Project

Towns of Arkwright, Charlotte, Cherry Creek, and Stockton - Chautauqua County, New York

Article 10 Application
Figure 22-2: Delineated Wetlands

April 2016

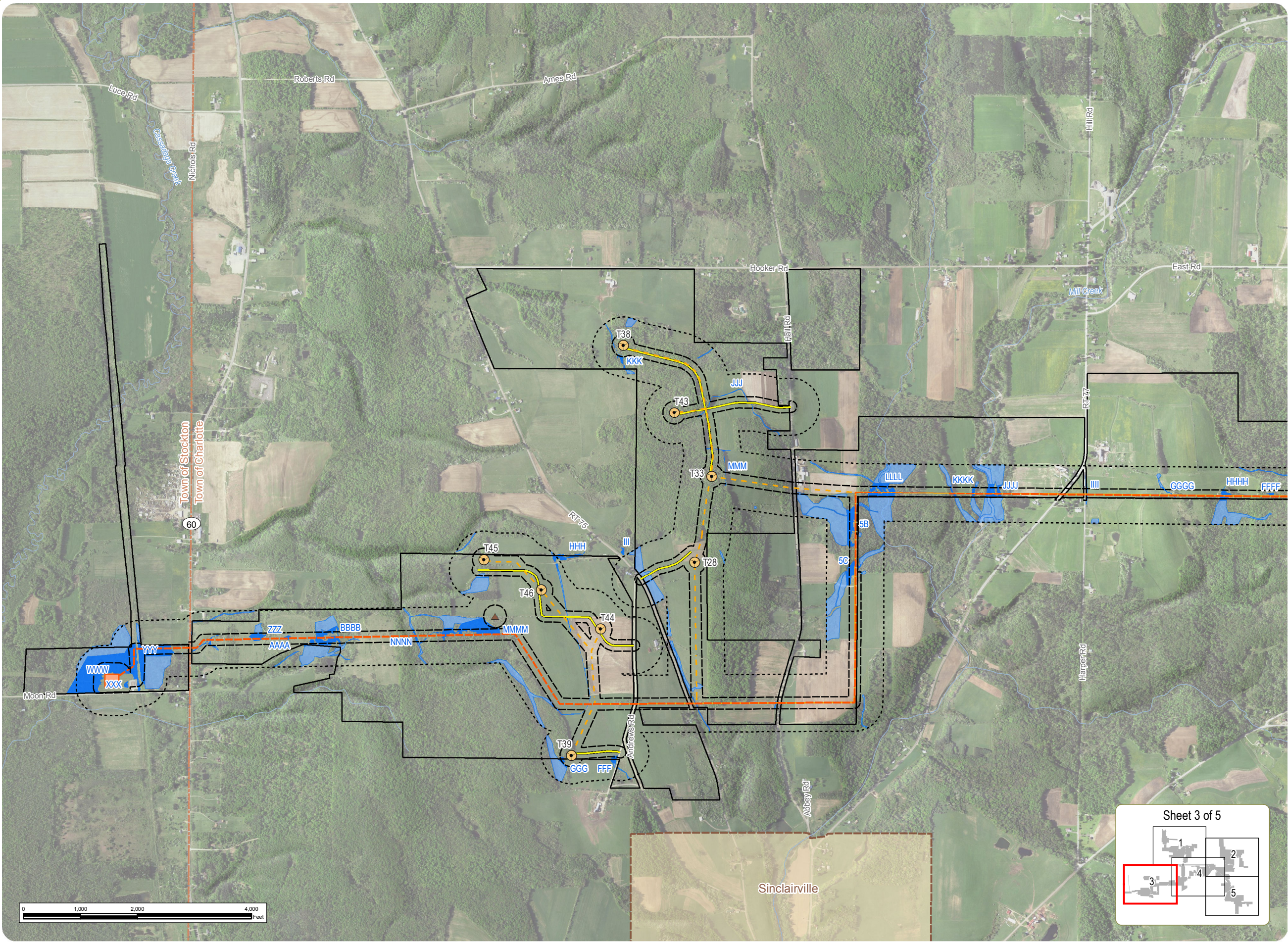
- Wind Turbine
- Permanent Meteorological Tower
- Proposed Horizontal Directional Drill Location
- 115 kV Generator Lead Line
- Underground Collection Line
- Overhead Collection Line
- Access Road
- POI Substation
- Collection Substation
- O&M Building
- Laydown Yard/Staging Area
- Delineated Wetland/Stream
- Approximate Wetland/Stream
- 200-Foot Delineation Study Area
- 1,000-Foot Wetland Study Area
- Facility Site
- City/Village Boundary
- Town Boundary

Notes:
1. Basemap: USDA Imagery: USDA FSA NAIP "2015 New York 0.5m" Map Service Layer; Hillshade derived from 10-meter resolution USGS DEM data; ESRI Street Map North America, 2008.
2. If Facility construction requires use of a temporary concrete batch plant, it will be located at the Laydown Yard/Staging Area.
3. This is a color graphic. Reproduction in grayscale may misrepresent the data.

everpower™



www.edrdpc.com



Cassadaga Wind Project
Towns of Arkwright, Charlotte, Cherry Creek, and Stockton - Chautauqua County, New York

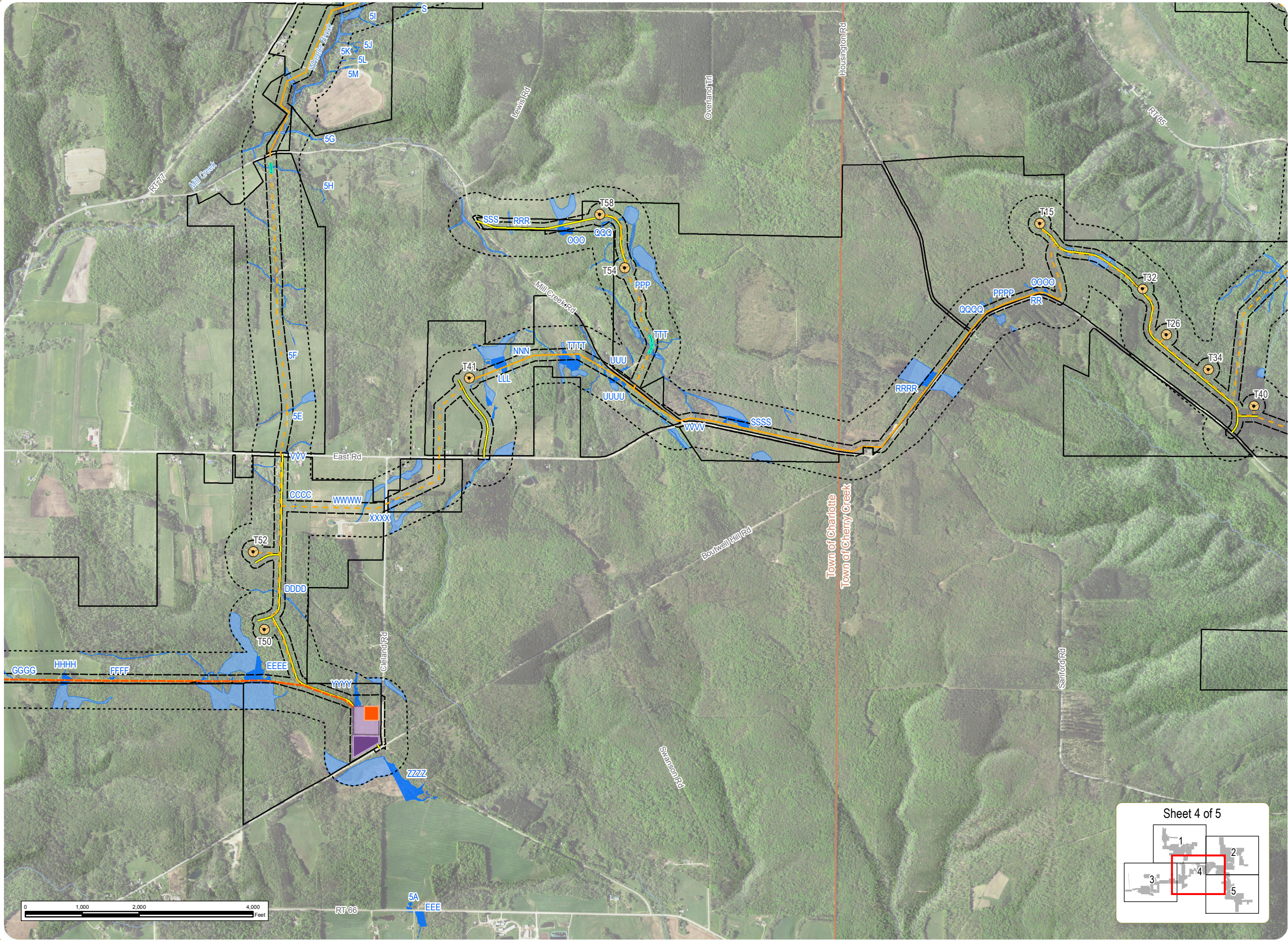
Article 10 Application
Figure 22-2: Delineated Wetlands

April 2016

- Wind Turbine
- Permanent Meteorological Tower
- Proposed Horizontal Directional Drill Location
- 115 kV Generator Lead Line
- Underground Collection Line
- Overhead Collection Line
- Access Road
- POI Substation
- Collection Substation
- O&M Building
- Laydown Yard/Staging Area
- Delineated Wetland/Stream
- Approximate Wetland/Stream
- 200-Foot Delineation Study Area
- 1,000-Foot Wetland Study Area
- Facility Site
- City/Village Boundary
- Town Boundary

Notes:
1. Basemap: USDA Imagery: USDA FSA NAIP "2015 New York 0.5m" Map Service Layer; Hillshade derived from 10-meter resolution USGS DEM data; ESRI Street Map North America, 2008.
2. If Facility construction requires use of a temporary concrete batch plant, it will be located at the Laydown Yard/Staging Area.
3. This is a color graphic. Reproduction in grayscale may misrepresent the data.

everpower™



Cassadaga Wind Project

Towns of Arkwright, Charlotte, Cherry Creek, and Stockton - Chautauqua County, New York

Article 10 Application Figure 22-2: Delineated Wetlands

April 2016

- Wind Turbine
- Permanent Meteorological Tower
- Proposed Horizontal Directional Drill Location
- 115 kV Generator Lead Line
- Underground Collection Line
- Overhead Collection Line
- Access Road
- POI Substation
- Collection Substation
- O&M Building
- Laydown Yard/Staging Area
- Delineated Wetland/Stream
- Approximate Wetland/Stream
- 200-Foot Delineation Study Area
- 1,000-Foot Wetland Study Area
- Facility Site
- City/Village Boundary
- Town Boundary

Notes:
1. Basemap: USDA Imagery: USDA FSA NAIP "2015 New York 0.5m" Map Service Layer; Hillshade derived from 10-meter resolution USGS DEM data; ESRI Street Map North America, 2008.
2. If Facility construction requires use of a temporary concrete batch plant, it will be located at the Laydown Yard/Staging Area.
3. This is a color graphic. Reproduction in grayscale may misrepresent the data.

everpower™

