

Cassadaga Wind Project

Towns of Arkwright, Charlotte, Cherry Creek, and Stockton - Chautauqua County, New York

Article 10 Application Figure 22-1: Impact to Plant Communities

April 2016

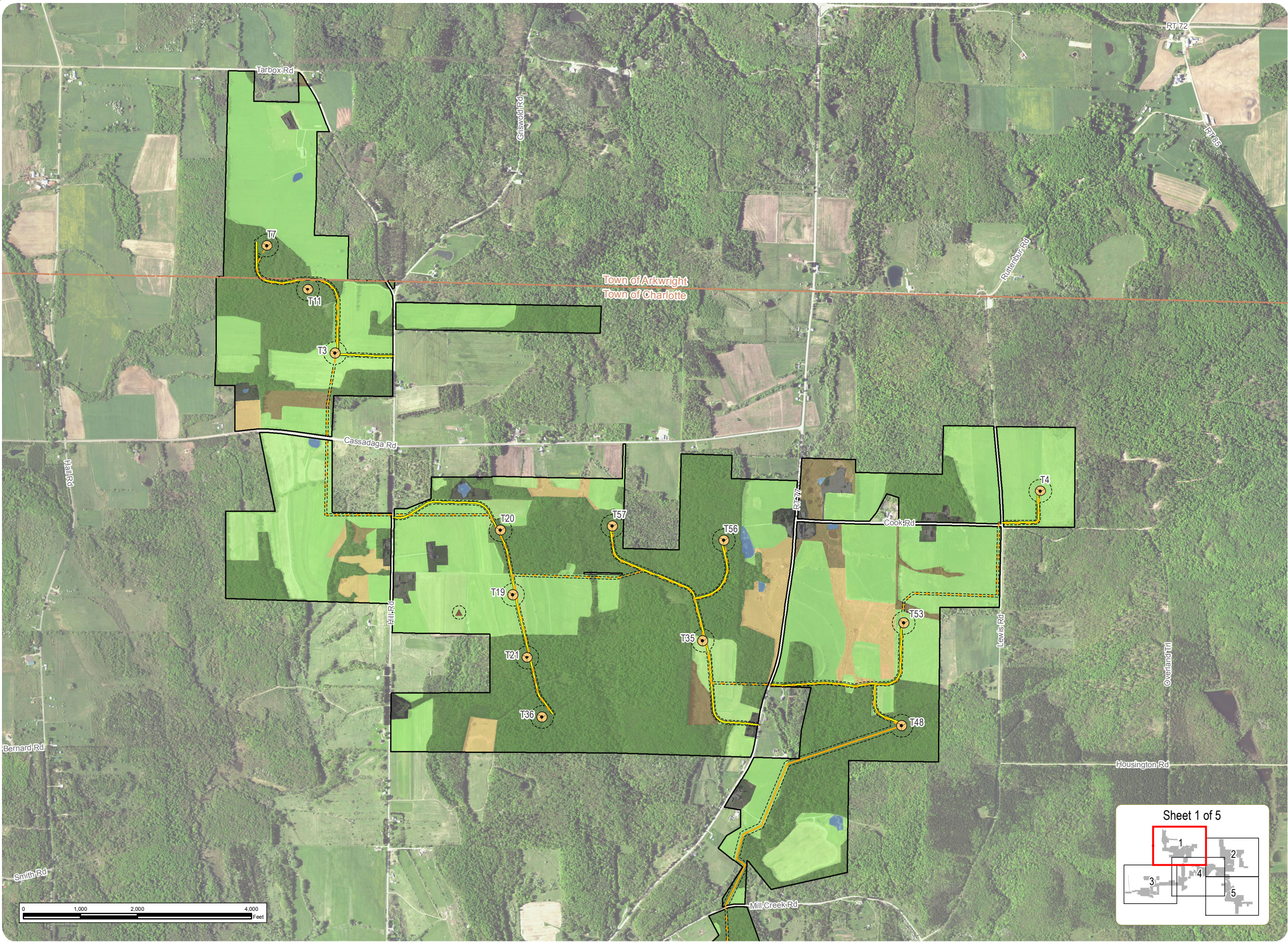
- Wind Turbine
- Permanent Meteorological Tower
- 115 kV Generator Lead Line
- Underground Collection Line
- Overhead Collection Line
- Access Road
- POI Substation
- Collection Substation
- O&M Building
- Laydown Yard/Staging Area
- Village Boundary
- Town Boundary
- Vegetative Community
 - Forestland
 - Agriculture
 - Successional Shrubland
 - Old Field
 - Disturbed/Developed
 - Open Water
- Approximate Limit of Clearing

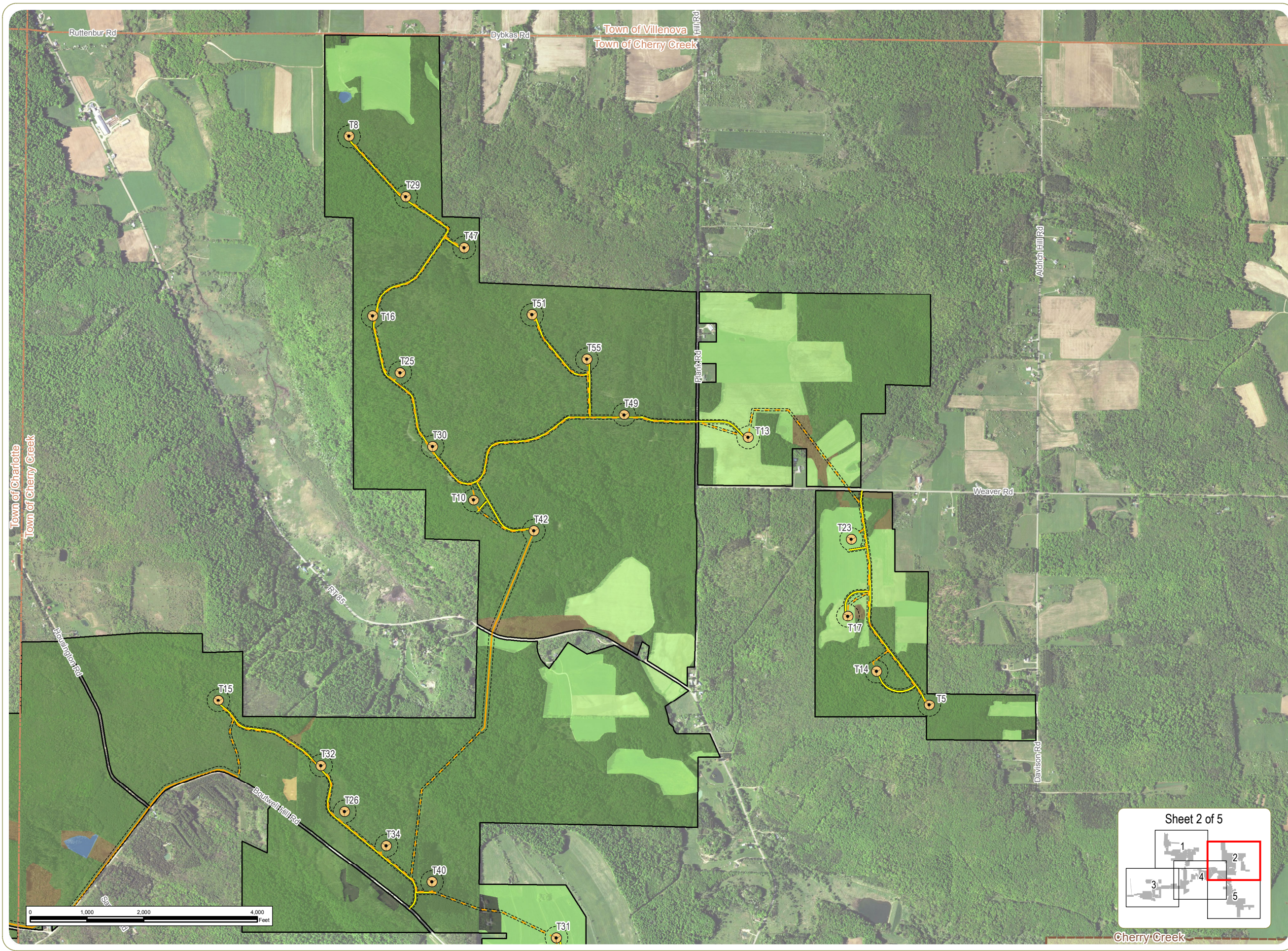
Notes:
1. Basemap: USDA Imagery: USDA FSA NAIP "2015 New York 0.5m" Map Service Layer; ESRI StreetMap North America, 2008.
2. If Facility construction requires use of a temporary concrete batch plant, it will be located at the Laydown Yard/Staging Area.
3. This is a color graphic. Reproduction in grayscale may misrepresent the data.

everpower™



www.edrdpc.com





Cassadaga Wind Project

Towns of Arkwright, Charlotte, Cherry Creek, and Stockton - Chautauqua County, New York

Article 10 Application Figure 22-1: Impact to Plant Communities

April 2016

- Wind Turbine
- Permanent Meteorological Tower
- 115 kV Generator Lead Line
- Underground Collection Line
- Overhead Collection Line
- Access Road
- POI Substation
- Collection Substation
- O&M Building
- Laydown Yard/Staging Area
- Village Boundary
- Town Boundary
- Vegetative Community
 - Forestland
 - Agriculture
 - Successional Shrubland
 - Old Field
 - Disturbed/Developed
 - Open Water
- Approximate Limit of Clearing

Notes:
1. Basemap: USDA Imagery: USDA FSA NAIP "2015 New York 0.5m" Map Service Layer; ESRI StreetMap North America, 2008.
2. If Facility construction requires use of a temporary concrete batch plant, it will be located at the Laydown Yard/Staging Area.
3. This is a color graphic. Reproduction in grayscale may misrepresent the data.

everpower™

Cassadaga Wind Project
Towns of Arkwright, Charlotte, Cherry Creek, and Stockton - Chautauqua County, New York

Article 10 Application
Figure 22-1: Impact to Plant Communities

April 2016

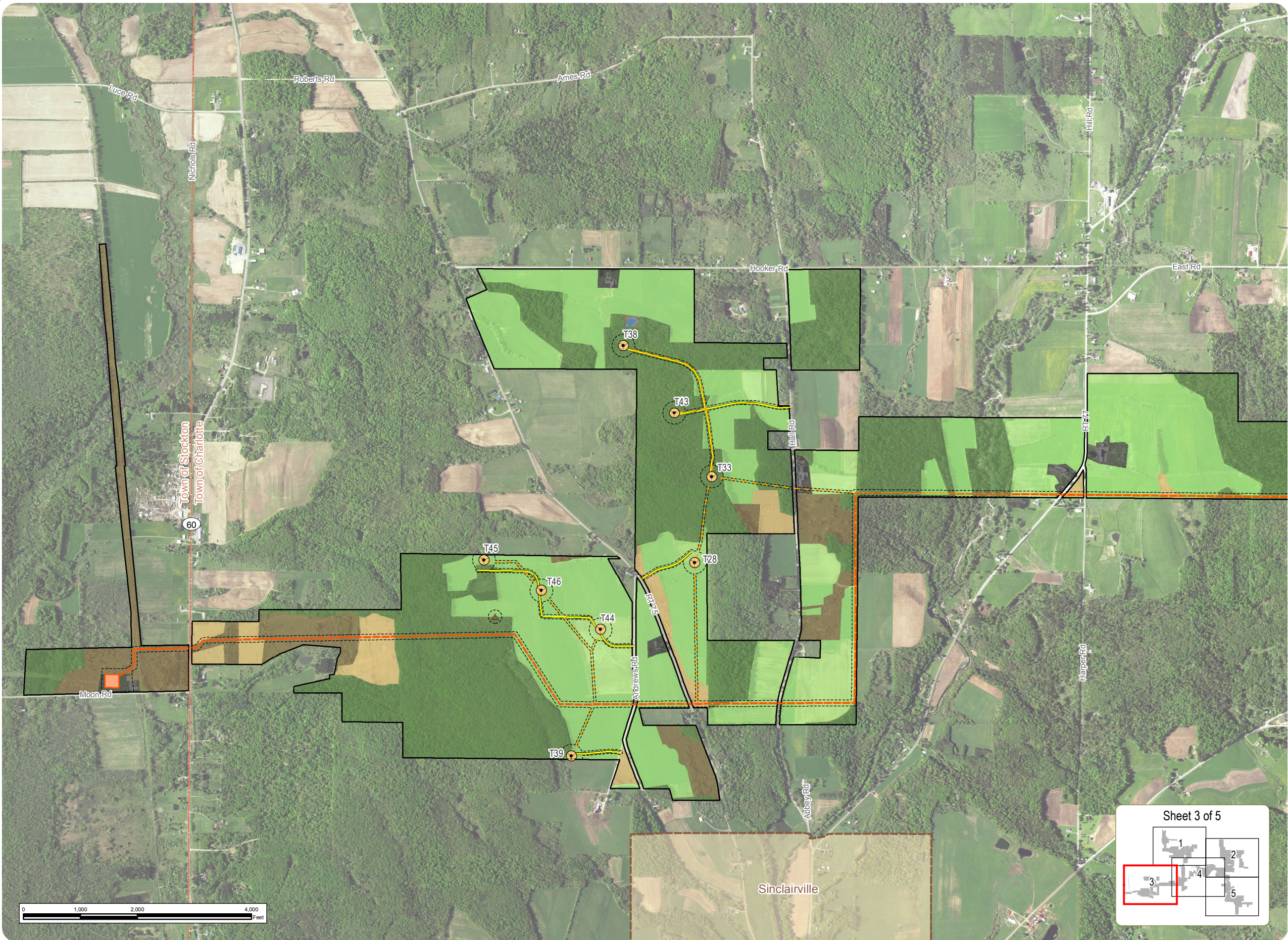
- Wind Turbine
- Permanent Meteorological Tower
- 115 kV Generator Lead Line
- Underground Collection Line
- Overhead Collection Line
- Access Road
- POI Substation
- Collection Substation
- O&M Building
- Laydown Yard/Staging Area
- Village Boundary
- Town Boundary
- Vegetative Community
 - Forestland
 - Agriculture
 - Successional Shrubland
 - Old Field
 - Disturbed/Developed
 - Open Water
- Approximate Limit of Clearing

Notes:
1. Basemap: USDA Imagery; USDA FSA NAIP "2015 New York 0.5m" Map Service Layer; ESRI StreetMap North America, 2008.
2. If Facility construction requires use of a temporary concrete batch plant, it will be located at the Laydown Yard/Staging Area.
3. This is a color graphic. Reproduction in grayscale may misrepresent the data.

everpower™



www.edrpc.com



Cassadaga Wind Project

Towns of Arkwright, Charlotte, Cherry Creek, and Stockton - Chautauqua County, New York

Article 10 Application Figure 22-1: Impact to Plant Communities

April 2016

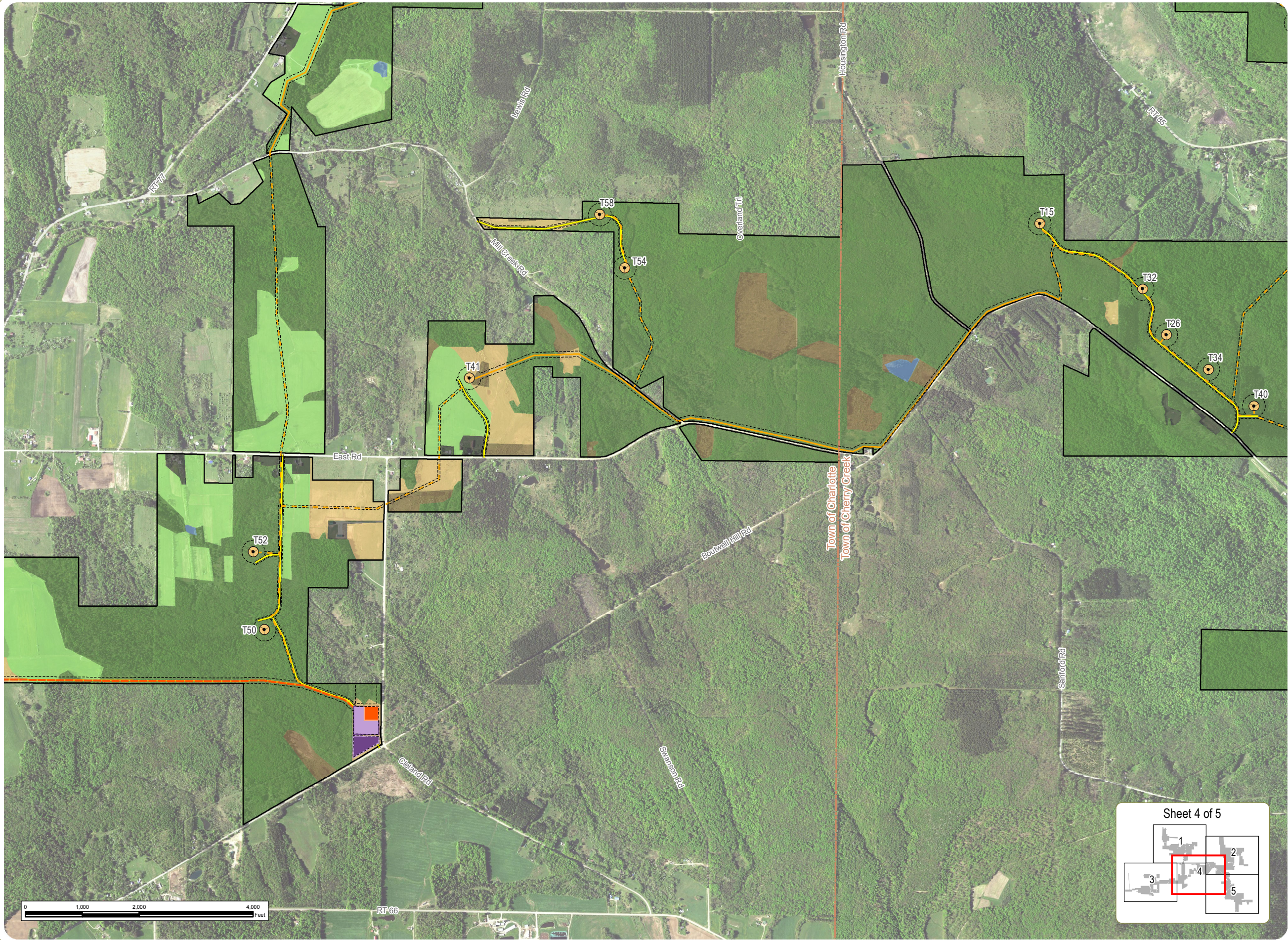
- Wind Turbine
- Permanent Meteorological Tower
- 115 kV Generator Lead Line
- Underground Collection Line
- Overhead Collection Line
- Access Road
- POI Substation
- Collection Substation
- O&M Building
- Laydown Yard/Staging Area
- Village Boundary
- Town Boundary
- Vegetative Community
 - Forestland
 - Agriculture
 - Successional Shrubland
 - Old Field
 - Disturbed/Developed
 - Open Water
- Approximate Limit of Clearing

Notes:
1. Basemap: USDA Imagery: USDA FSA NAIP "2015 New York 0.5m" Map Service Layer; ESRI StreetMap North America, 2008.
2. If Facility construction requires use of a temporary concrete batch plant, it will be located at the Laydown Yard/Staging Area.
3. This is a color graphic. Reproduction in grayscale may misrepresent the data.

everpower™



www.edrdpc.com



Cassadaga Wind Project

Towns of Arkwright, Charlotte, Cherry Creek, and Stockton - Chautauqua County, New York

Article 10 Application Figure 22-1: Impact to Plant Communities

April 2016

- Wind Turbine
- Permanent Meteorological Tower
- 115 kV Generator Lead Line
- Underground Collection Line
- Overhead Collection Line
- Access Road
- POI Substation
- Collection Substation
- O&M Building
- Laydown Yard/Staging Area
- Village Boundary
- Town Boundary
- Vegetative Community
 - Forestland
 - Agriculture
 - Successional Shrubland
 - Old Field
 - Disturbed/Developed
 - Open Water
 - Approximate Limit of Clearing

Notes:
1. Basemap: USDA Imagery: USDA FSA NAIP "2015 New York 0.5m" Map Service Layer; ESRI StreetMap North America, 2008.
2. If Facility construction requires use of a temporary concrete batch plant, it will be located at the Laydown Yard/Staging Area.
3. This is a color graphic. Reproduction in grayscale may misrepresent the data.

everpower™



www.edrpc.com

