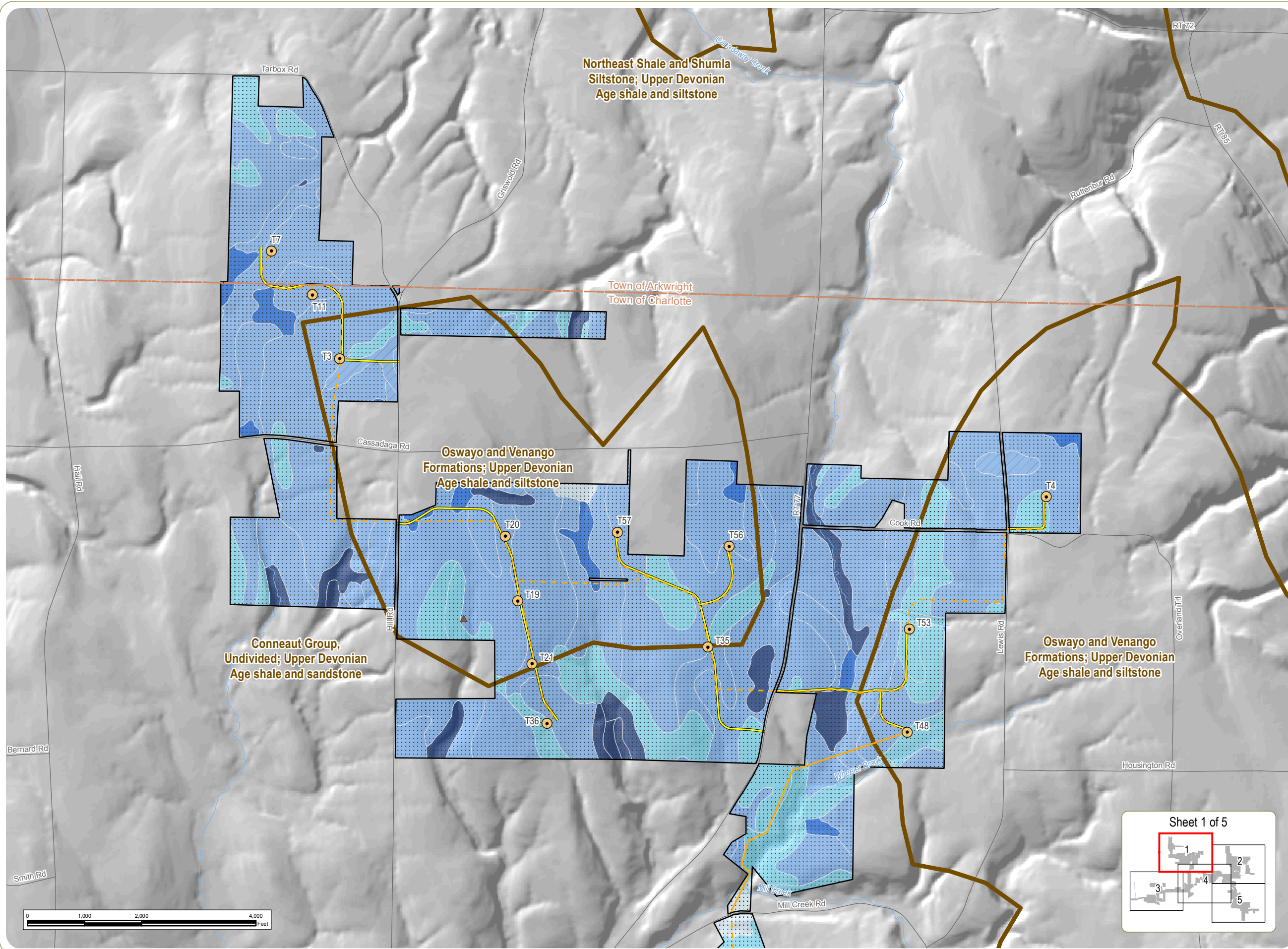


Cassadaga Wind Project

Towns of Arkwright, Charlotte, Cherry Creek, and Stockton - Chautauqua County, New York

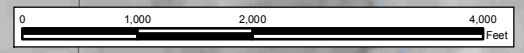
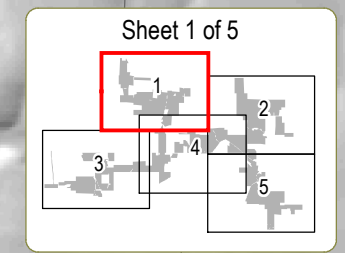
Article 10 Application Figure 21-3: Bedrock

April 2016



- Wind Turbine
 - Permanent Meteorological Tower
 - Underground Collection Line
 - Overhead Collection Line
 - Access Road
 - Town Boundary
 - Bedrock Formation
- Depth to Bedrock
- 26 in.
 - > 72 in. dotted pattern"/> > 72 in.
- Depth to High Water Table
- 0 in.
 - 1-10 in.
 - 11-20 in.
 - 21-30 in.
 - >50 in. white"/> >50 in.

- Notes:**
1. Turbine foundations will be installed at a depth of approximately 10 feet; buried collection lines will be installed at a depth of 3 to 4 feet; access road excavations (where necessary) will vary based on final design parameters
 2. Data on bedrock type derived from USGS Integrated Geologic Map Databases for the United States. Data on depth to bedrock and depth to high water table derived from NRCS SSURGO database.
 3. Basemap: Hillshade derived from 10-meter resolution USDA DEM data; ESRI StreetMap North America, 2008.
 4. This is a color graphic. Reproduction in grayscale may misrepresent the data.

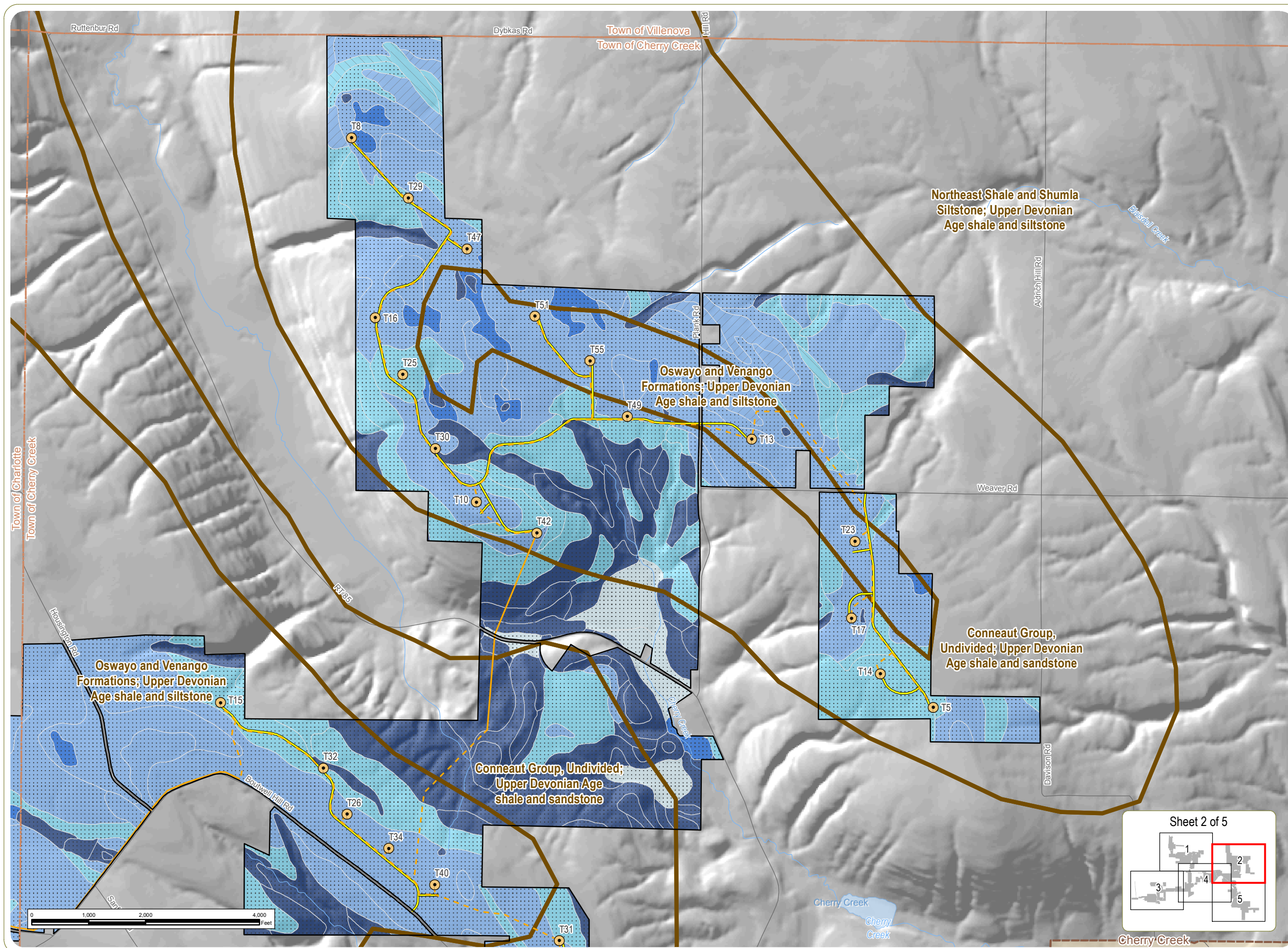


Cassadaga Wind Project

Towns of Arkwright, Charlotte, Cherry Creek, and Stockton - Chautauqua County, New York

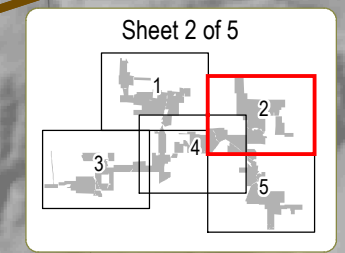
Article 10 Application Figure 21-3: Bedrock

April 2016



- Wind Turbine
 - Underground Collection Line
 - Overhead Collection Line
 - Access Road
 - Village Boundary
 - Town Boundary
 - Bedrock Formation
- Depth to Bedrock
- 26 in.
 - 30 in.
 - > 72 in.
- Depth to High Water Table
- 0 in.
 - 1-10 in.
 - 11-20 in.
 - 21-30 in.
 - >50 in.

- Notes:**
1. Turbine foundations will be installed at a depth of approximately 10 feet; buried collection lines will be installed at a depth of 3 to 4 feet; access road excavations (where necessary) will vary based on final design parameters
 2. Data on bedrock type derived from USGS Integrated Geologic Map Databases for the United States. Data on depth to bedrock and depth to high water table derived from NRCS SSURGO database.
 3. Basemap: Hillshade derived from 10-meter resolution USDA DEM data; ESRI StreetMap North America, 2008.
 4. This is a color graphic. Reproduction in grayscale may misrepresent the data.



www.edrdpc.com

Cassadaga Wind Project

Towns of Arkwright, Charlotte, Cherry Creek, and Stockton - Chautauqua County, New York

Article 10 Application Figure 21-3: Bedrock

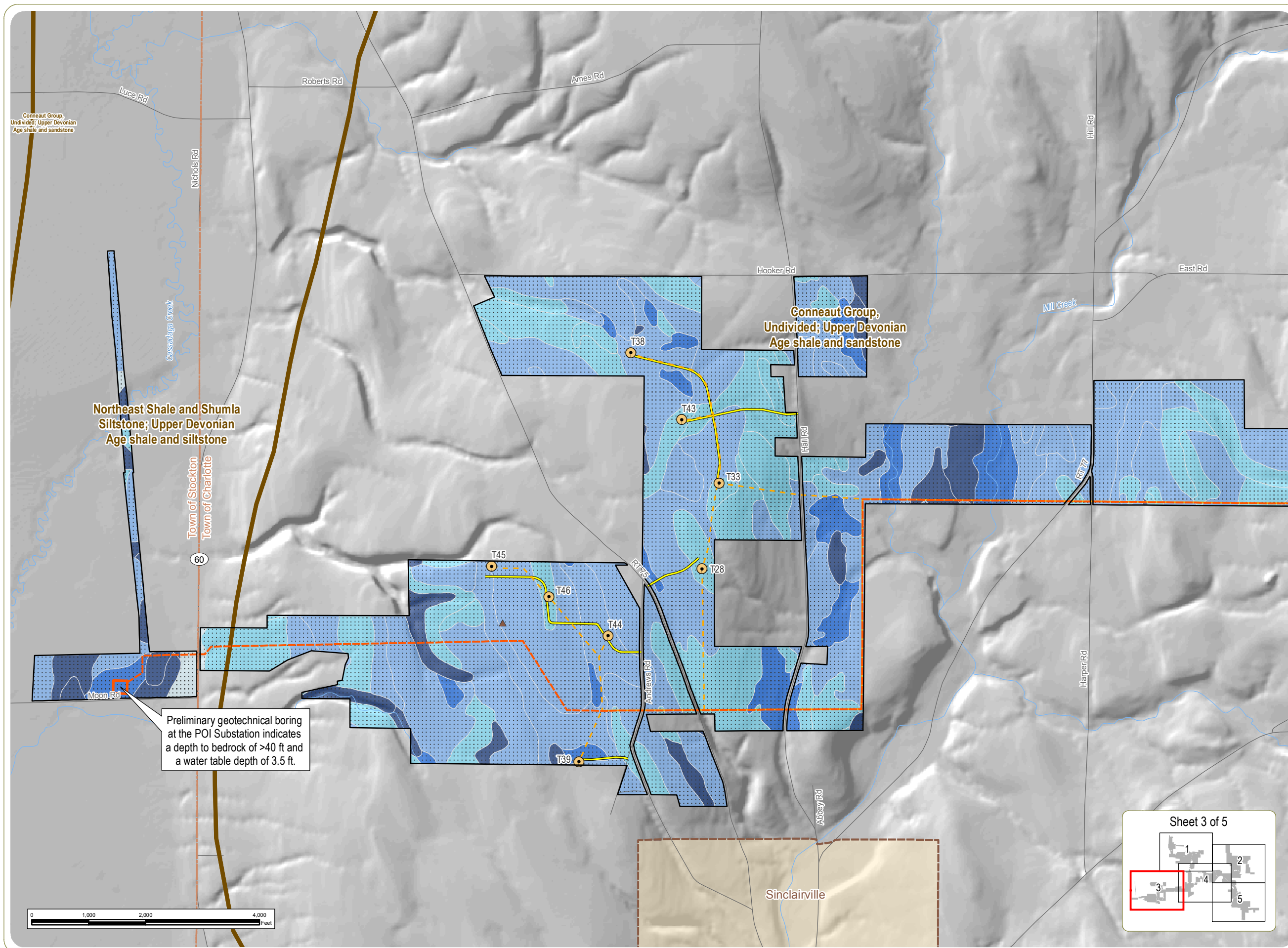
April 2016

- Wind Turbine
 - Permanent Meteorological Tower
 - 115 kV Generator Lead Line
 - Underground Collection Line
 - Overhead Collection Line
 - Access Road
 - POI Substation
 - Village Boundary
 - Town Boundary
 - Bedrock Formation
- Depth to Bedrock
- 26 in.
 - > 72 in. pattern"/> > 72 in.
- Depth to High Water Table
- 0 in.
 - 1-10 in.
 - 11-20 in.
 - 21-30 in.
 - >50 in. color"/> >50 in.

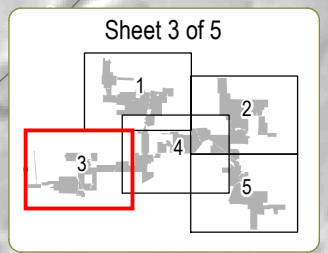
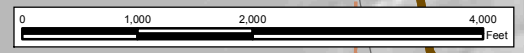
- Notes:**
- Turbine foundations will be installed at a depth of approximately 10 feet; buried collection lines will be installed at a depth of 3 to 4 feet; access road excavations (where necessary) will vary based on final design parameters
 - Data on bedrock type derived from USGS Integrated Geologic Map Databases for the United States. Data on depth to bedrock and depth to high water table derived from NRCS SSURGO database.
 - Basemap: Hillshade derived from 10-meter resolution USDA DEM data; ESRI StreetMap North America, 2008.
 - This is a color graphic. Reproduction in grayscale may misrepresent the data.



www.edrdpc.com



Preliminary geotechnical boring at the POI Substation indicates a depth to bedrock of >40 ft and a water table depth of 3.5 ft.



Cassadaga Wind Project

Towns of Arkwright, Charlotte, Cherry Creek, and Stockton - Chautauqua County, New York

Article 10 Application Figure 21-3: Bedrock

April 2016

- Wind Turbine
- 115 kV Generator Lead Line
- Underground Collection Line
- Overhead Collection Line
- Access Road
- O&M Building
- Collection Substation
- Laydown Yard/Staging Area
- Town Boundary
- Bedrock Formation

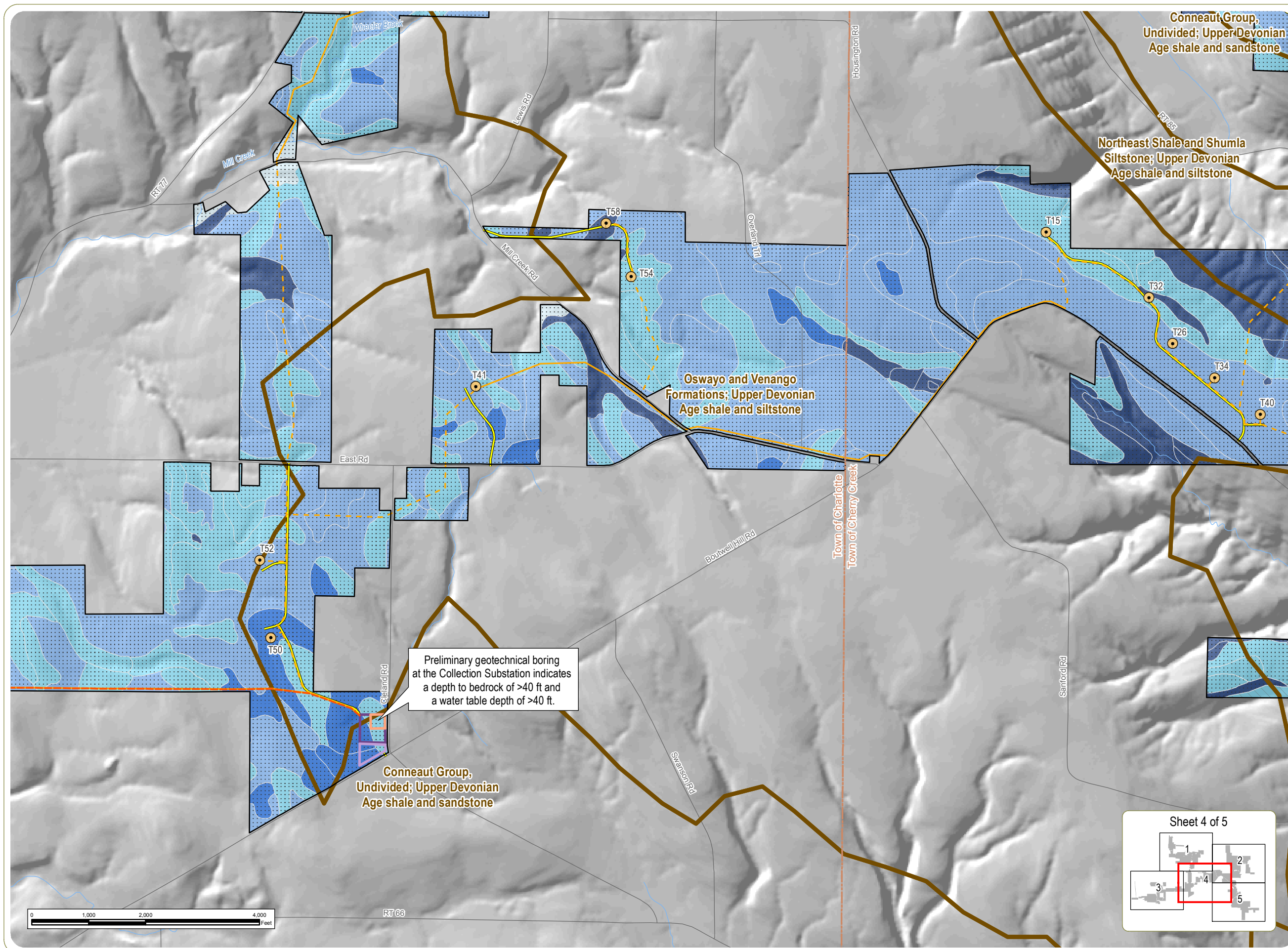
- Depth to Bedrock
- 30 in.
 - > 72 in. pattern"/> > 72 in.

- Depth to High Water Table
- 0 in.
 - 1-10 in.
 - 11-20 in.
 - 21-30 in.
 - >50 in.

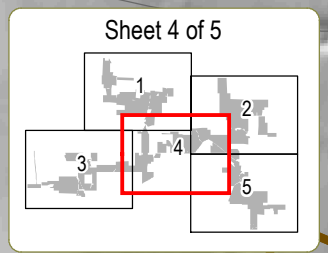
- Notes:**
1. Turbine foundations will be installed at a depth of approximately 10 feet; buried collection lines will be installed at a depth of 3 to 4 feet; access road excavations (where necessary) will vary based on final design parameters
 2. Data on bedrock type derived from USGS Integrated Geologic Map Databases for the United States. Data on depth to bedrock and depth to high water table derived from NRCS SSURGO database.
 3. Basemap: Hillshade derived from 10-meter resolution USDA DEM data; ESRI StreetMap North America, 2008.
 4. This is a color graphic. Reproduction in grayscale may misrepresent the data.



www.edrdpc.com



Preliminary geotechnical boring at the Collection Substation indicates a depth to bedrock of >40 ft and a water table depth of >40 ft.

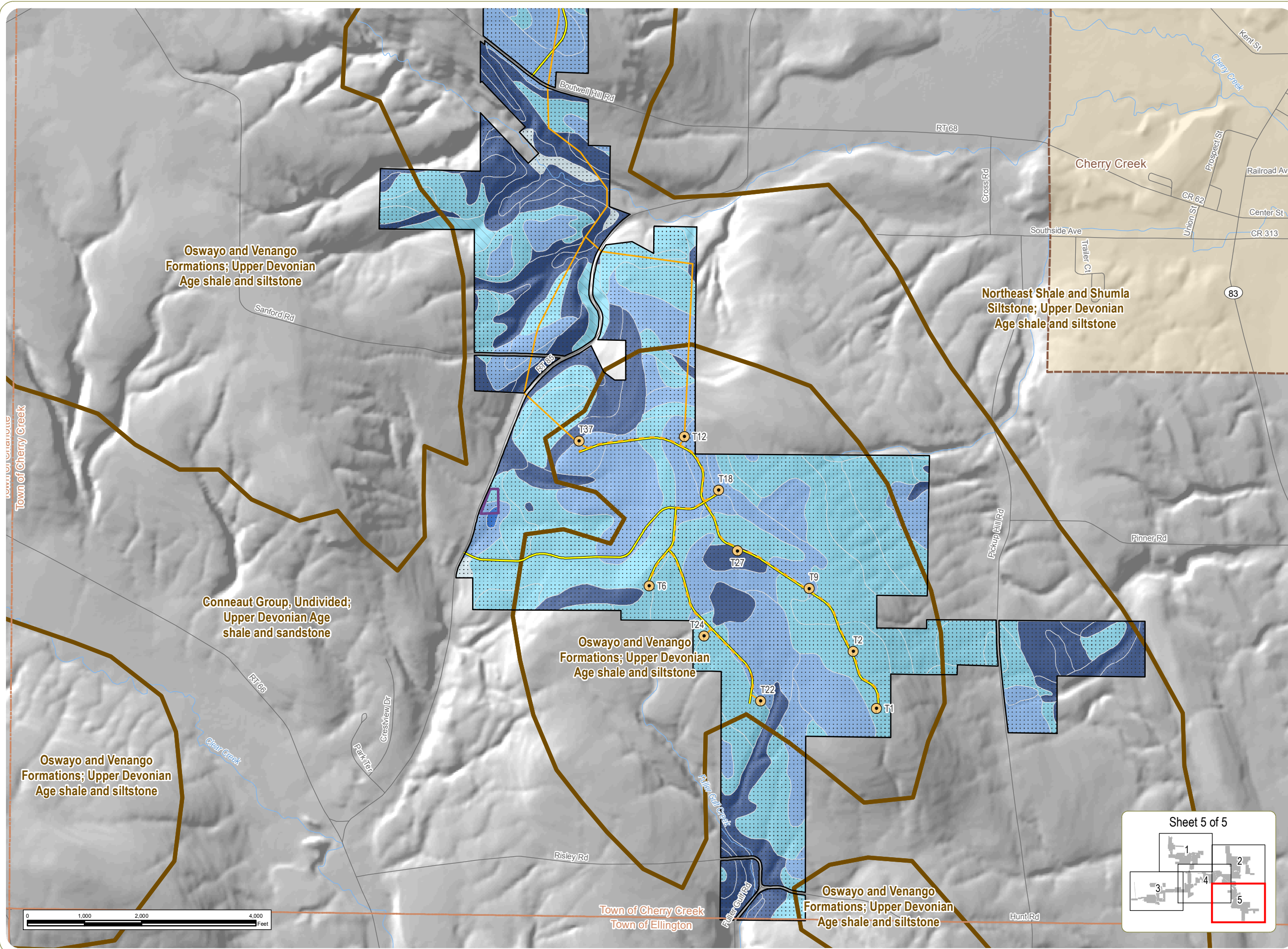


Cassadaga Wind Project

Towns of Arkwright, Charlotte, Cherry Creek, and Stockton - Chautauqua County, New York

Article 10 Application Figure 21-3: Bedrock

April 2016



- Wind Turbine
- Underground Collection Line
- Overhead Collection Line
- Access Road
- Laydown Yard/Staging Area
- Village Boundary
- Town Boundary
- Bedrock Formation
- Depth to Bedrock**
- 30 in.
- > 72 in.
- Depth to High Water Table**
- 0 in.
- 1-10 in.
- 11-20 in.
- 21-30 in.
- >50 in.

Notes:

1. Turbine foundations will be installed at a depth of approximately 10 feet; buried collection lines will be installed at a depth of 3 to 4 feet; access road excavations (where necessary) will vary based on final design parameters
2. Data on bedrock type derived from USGS Integrated Geologic Map Databases for the United States. Data on depth to bedrock and depth to high water table derived from NRCS SSURGO database.
3. Basemap: Hillshade derived from 10-meter resolution USDA DEM data; ESRI StreetMap North America, 2008.
4. This is a color graphic. Reproduction in grayscale may misrepresent the data.

