

Cassadaga Wind Project

Towns of Arkwright, Charlotte, Cherry Creek, and Stockton - Chautauqua County, New York

Article 10 Application Figure 19-1: Sensitive Sound Receptors

April 2016

- Structure
- Wind Turbine
- ▲ Permanent Meteorological Tower
- - - Underground Collection Line
- Overhead Collection Line
- Access Road
- Earl Cardot Eastside Overland Trail
- Equestrian Trail
- Snowmobile Trail
- Wildlife Management Area
- NYSDEC Land
- Facility Site

Notes:
1. Basemap: USDA Imagery: USDA FSA NAIP "2015 New York 0.5m" Map Service Layer; Hillshade derived from 10-meter resolution USGS DEM data; ESRI Street Map North America, 2008.
2. If Facility construction requires use of a temporary concrete batch plant, it will be located at the Laydown Yard/Staging Area.
3. This is a color graphic. Reproduction in grayscale may misrepresent the data.

everpower™



www.edrdpc.com

Cassadaga Wind Project
Towns of Arkwright, Charlotte, Cherry Creek, and Stockton - Chautauqua County, New York

Article 10 Application
Figure 19-1: Sensitive Sound Receptors

April 2016

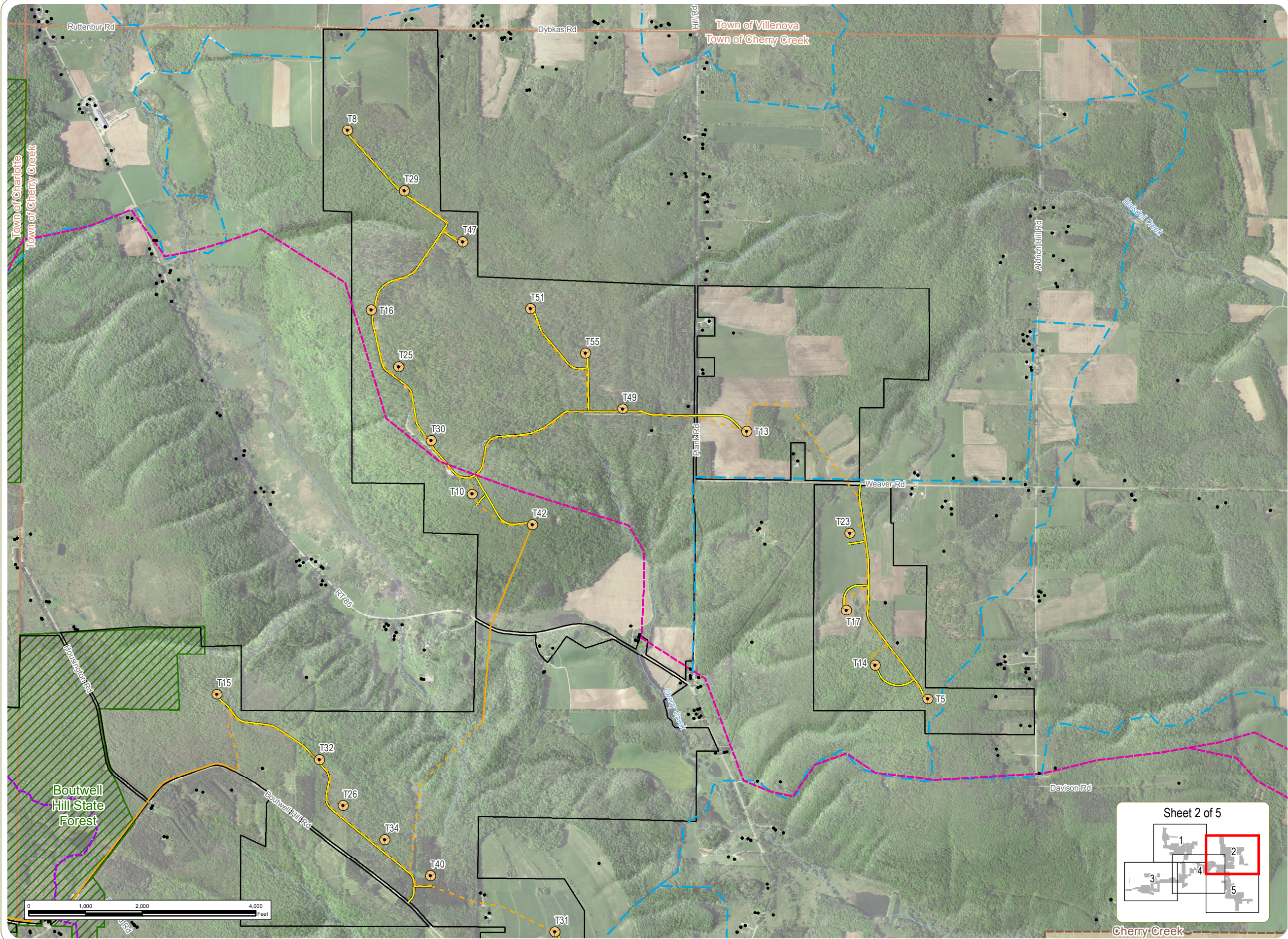
- Structure
- Wind Turbine
- - - Underground Collection Line
- - - Overhead Collection Line
- - - Access Road
- - - Earl Cardot Eastside Overland Trail
- - - Equestrian Trail
- - - Snowmobile Trail
- ▨ NYSDEC Land
- Facility Site
- Village

Notes:
1. Basemap: USDA Imagery: USDA FSA NAIP "2015 New York 0.5m" Map Service Layer; Hillshade derived from 10-meter resolution USGS DEM data; ESRI Street Map North America, 2008.
2. If Facility construction requires use of a temporary concrete batch plant, it will be located at the Laydown Yard/Staging Area.
3. This is a color graphic. Reproduction in grayscale may misrepresent the data.

everpower™



www.edrdpc.com



Cassadaga Wind Project

Towns of Arkwright, Charlotte, Cherry Creek, and Stockton - Chautauqua County, New York

Article 10 Application
Figure 19-1: Sensitive Sound Receptors

April 2016

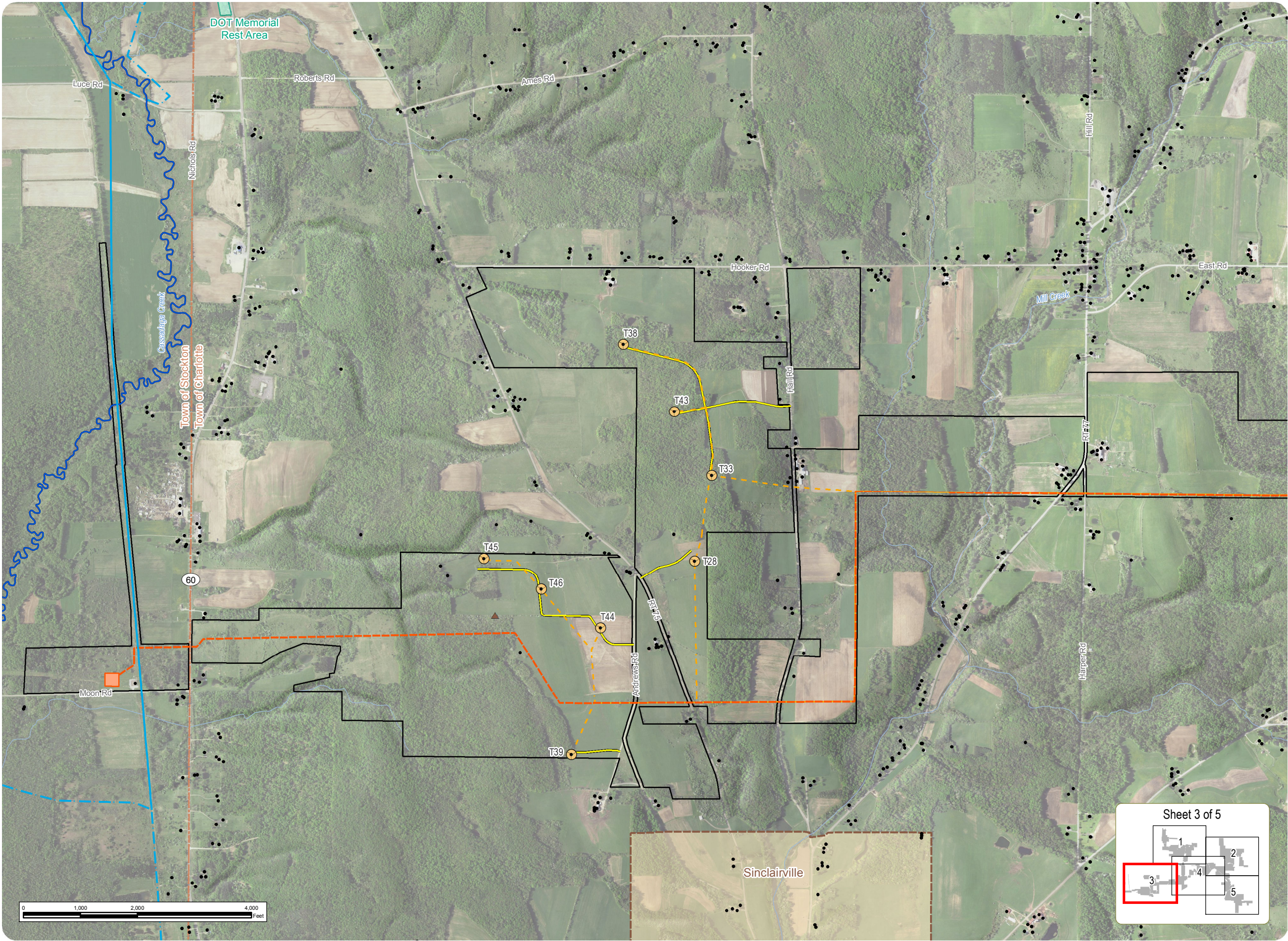
- Structure
- Wind Turbine
- ▲ Permanent Meteorological Tower
- 115 kV Generator Lead Line
- - - Underground Collection Line
- Overhead Collection Line
- Access Road
- · - Snowmobile Trail
- Water Trail
- Other Local Resources
- POI Substation
- Facility Site
- Village

Notes:
1. Basemap: USDA Imagery: USDA FSA NAIP "2015 New York 0.5m" Map Service Layer; Hillshade derived from 10-meter resolution USGS DEM data; ESRI Street Map North America, 2008.
2. If Facility construction requires use of a temporary concrete batch plant, it will be located at the Laydown Yard/Staging Area.
3. This is a color graphic. Reproduction in grayscale may misrepresent the data.

everpower™



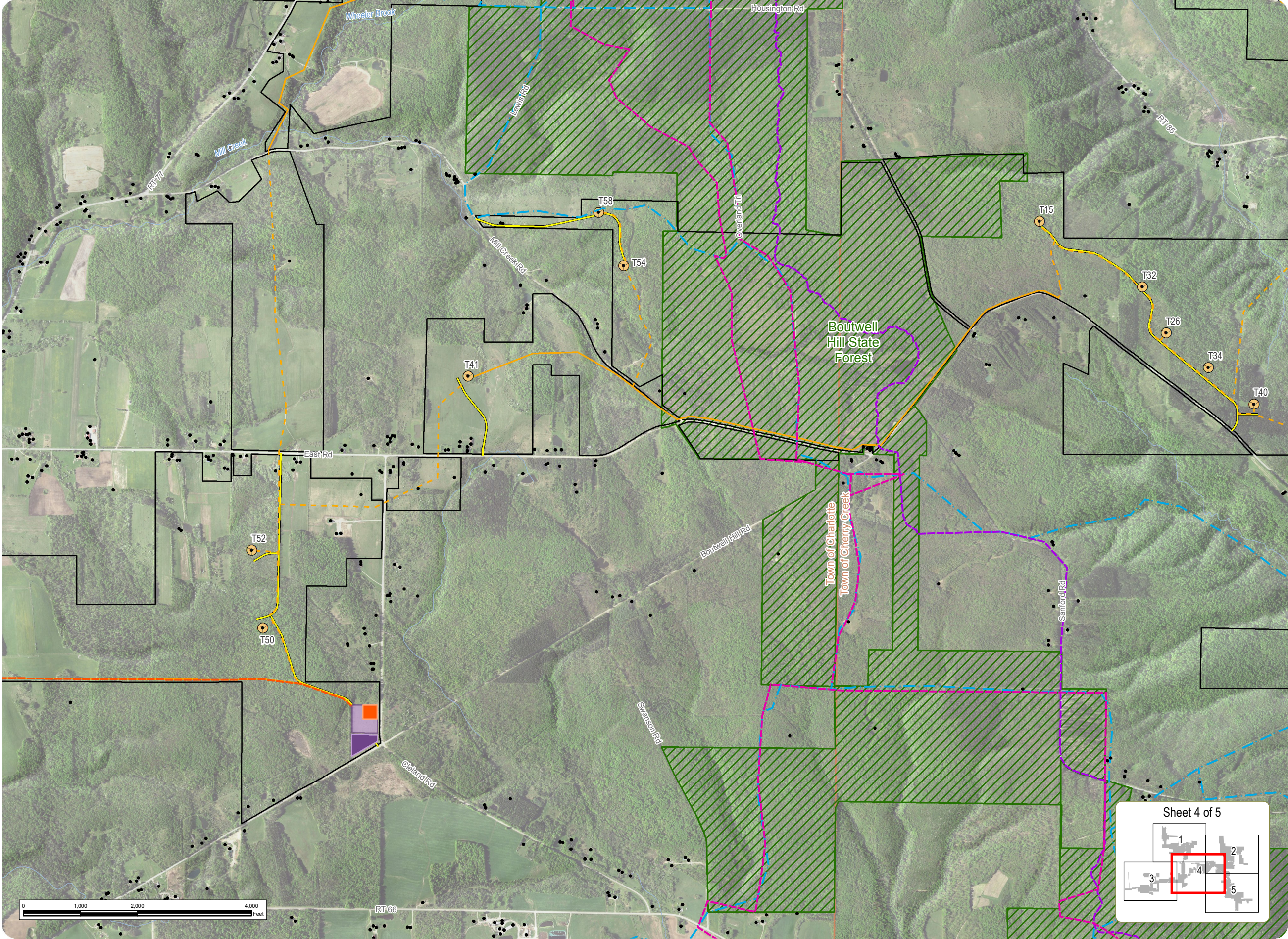
www.edrdpc.com



Cassadaga Wind Project
Towns of Arkwright, Charlotte, Cherry Creek, and Stockton - Chautauqua County, New York

Article 10 Application
Figure 19-1: Sensitive Sound Receptors

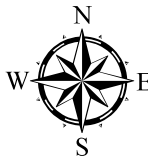
April 2016



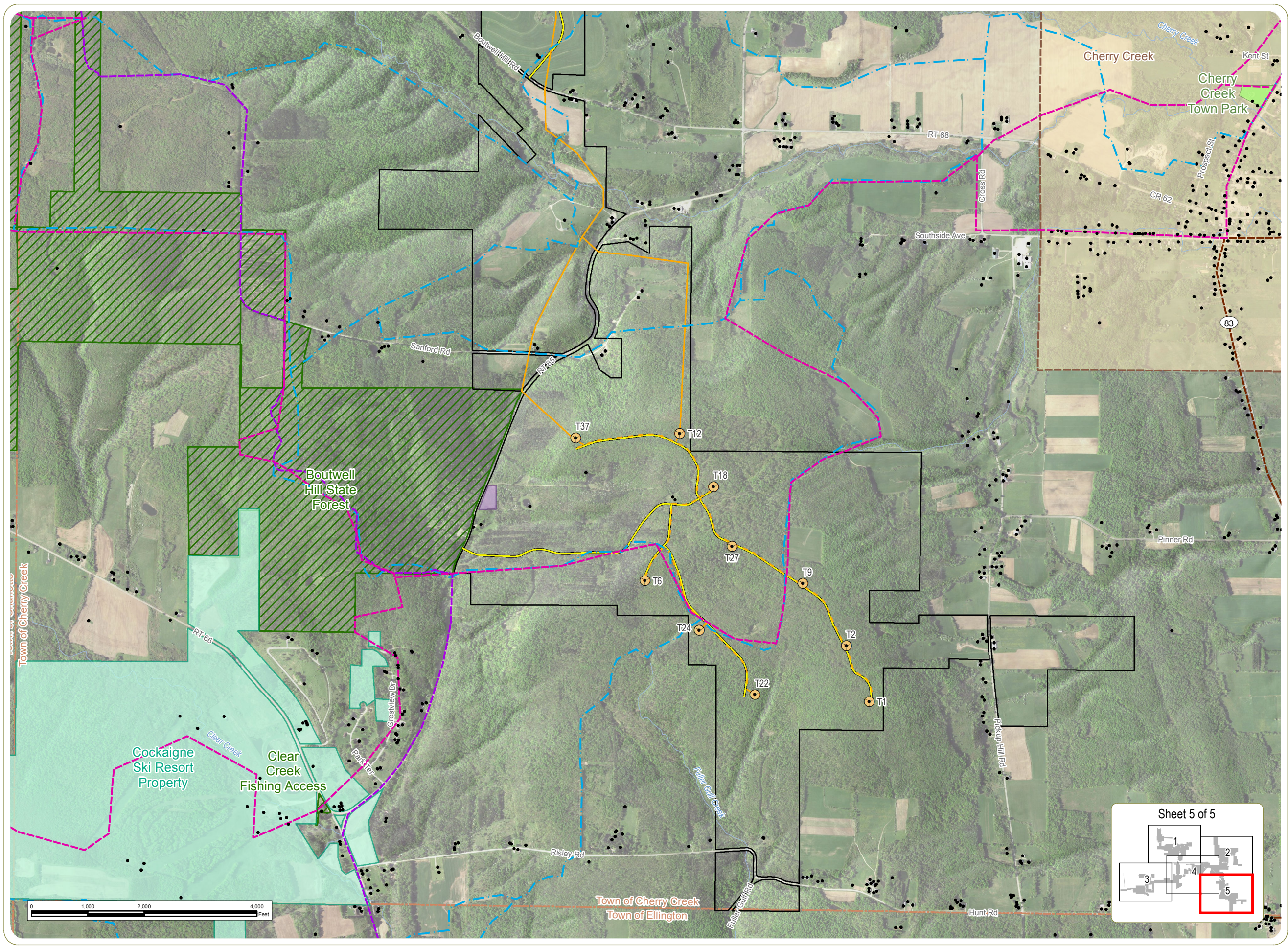
- Structure
- Wind Turbine
- 115 kV Generator Lead Line
- - - Underground Collection Line
- Overhead Collection Line
- Access Road
- Earl Cardot Eastside Overland Trail
- Equestrian Trail
- Snowmobile Trail
- ▨ NYSDEC Land
- Collection Substation
- O&M Building
- Laydown Yard/Staging Area
- Facility Site

Notes:
1. Basemap: USDA Imagery: USDA FSA NAIP "2015 New York 0.5m" Map Service Layer; Hillshade derived from 10-meter resolution USGS DEM data; ESRI Street Map North America, 2008.
2. If Facility construction requires use of a temporary concrete batch plant, it will be located at the Laydown Yard/Staging Area.
3. This is a color graphic. Reproduction in grayscale may misrepresent the data.

everpower™



www.edrdpc.com



Cassadaga Wind Project

Towns of Arkwright, Charlotte, Cherry Creek, and Stockton - Chautauqua County, New York

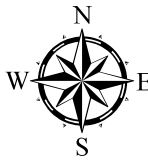
Article 10 Application Figure 19-1: Sensitive Sound Receptors

April 2016

- Structure
- Wind Turbine
- - - Underground Collection Line
- - - Overhead Collection Line
- - - Access Road
- - - Amish Trail
- - - Earl Cardot Eastside Overland Trail
- - - Equestrian Trail
- - - Snowmobile Trail
- ▨ NYSDEC Land
- ▨ Local Park
- ▨ Cockaigne Ski Resort
- ▨ Laydown Yard/Staging Area
- ▨ Facility Site
- ▨ Village

Notes:
1. Basemap: USDA Imagery: USDA FSA NAIP "2015 New York 0.5m" Map Service Layer; Hillshade derived from 10-meter resolution USGS DEM data; ESRI Street Map North America, 2008.
2. If Facility construction requires use of a temporary concrete batch plant, it will be located at the Laydown Yard/Staging Area.
3. This is a color graphic. Reproduction in grayscale may misrepresent the data.

everpower™



www.edrdpc.com