

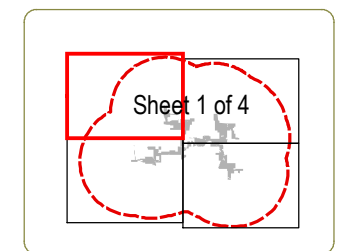
Cassadaga Wind Project

Towns of Arkwright, Charlotte, Cherry Creek, and Stockton - Chautauqua County, New York

Article 10 Application Figure 15-1: Public Health and Safety

April 2016

- Public Water Supply
- F Fire Station/EMS Station
- Emergency Services Mobile Land Site
- EPA Regulated Facilities
- Bridge
- Regulated Dam
- Flood Hazard Category**
- Special Flood Hazard Area
- Shaded Zone X
- Facility Site
- 5 Mile Facility Buffer

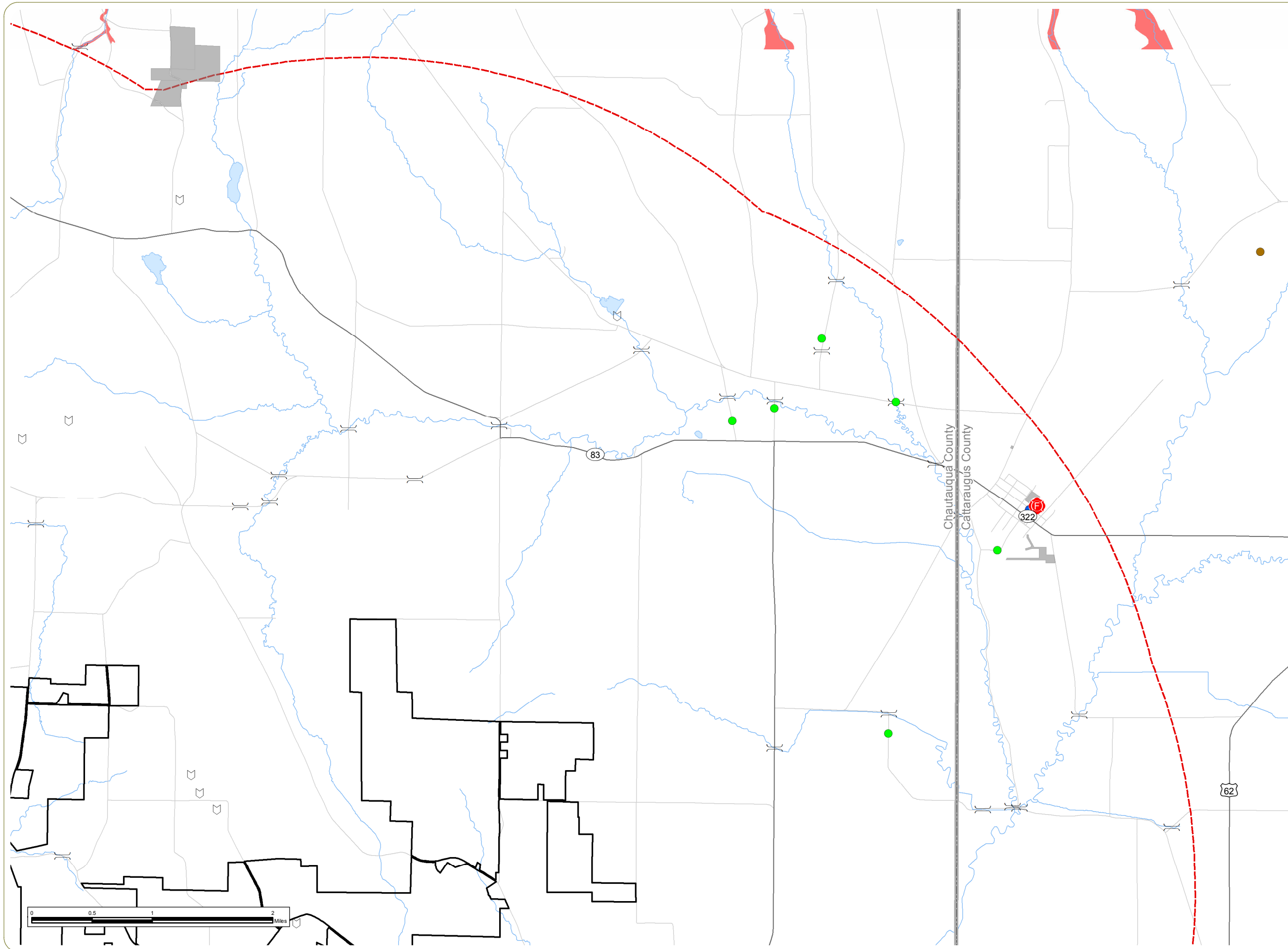


Notes:

1. Basemap: ESRI StreetMap North America, 2008.
2. The Applicant is not aware of any known evacuation routes within the Study Area.
3. This is a color graphic. Reproduction in grayscale may misrepresent the data.



www.edrdpc.com



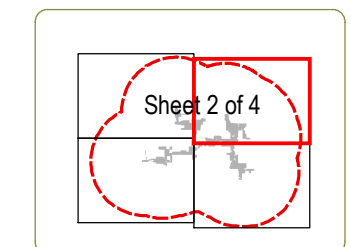
Cassadaga Wind Project

Towns of Arkwright, Charlotte, Cherry Creek, and Stockton - Chautauqua County, New York

Article 10 Application Figure 15-1: Public Health and Safety

April 2016

- Public Water Supply
- F Fire Station/EMS Station
- EPA Regulated Facilities
- NYSDEC Remediation Site
- Bridge
- Regulated Dam
- Flood Hazard Category**
- Special Flood Hazard Area
- Shaded Zone X
- Facility Site
- 5 Mile Facility Buffer



- Notes:**
1. Basemap: ESRI StreetMap North America, 2008.
 2. The Applicant is not aware of any known evacuation routes within the Study Area.
 3. This is a color graphic. Reproduction in grayscale may misrepresent the data.

everpower™

www.edrdpc.com

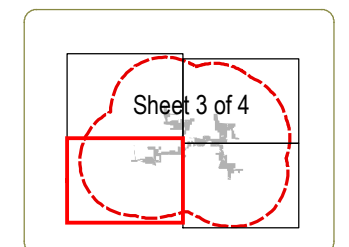
Cassadaga Wind Project

Towns of Arkwright, Charlotte, Cherry Creek, and Stockton - Chautauqua County, New York

Article 10 Application Figure 15-1: Public Health and Safety

April 2016

- Public Water Supply
- F Fire Station/EMS Station
- Emergency Services Mobile Land Site
- EPA Regulated Facilities
- NYSDEC Remediation Site
- Bridge
- Regulated Dam
- Flood Hazard Category**
- Special Flood Hazard Area
- Shaded Zone X
- Facility Site
- 5 Mile Facility Buffer

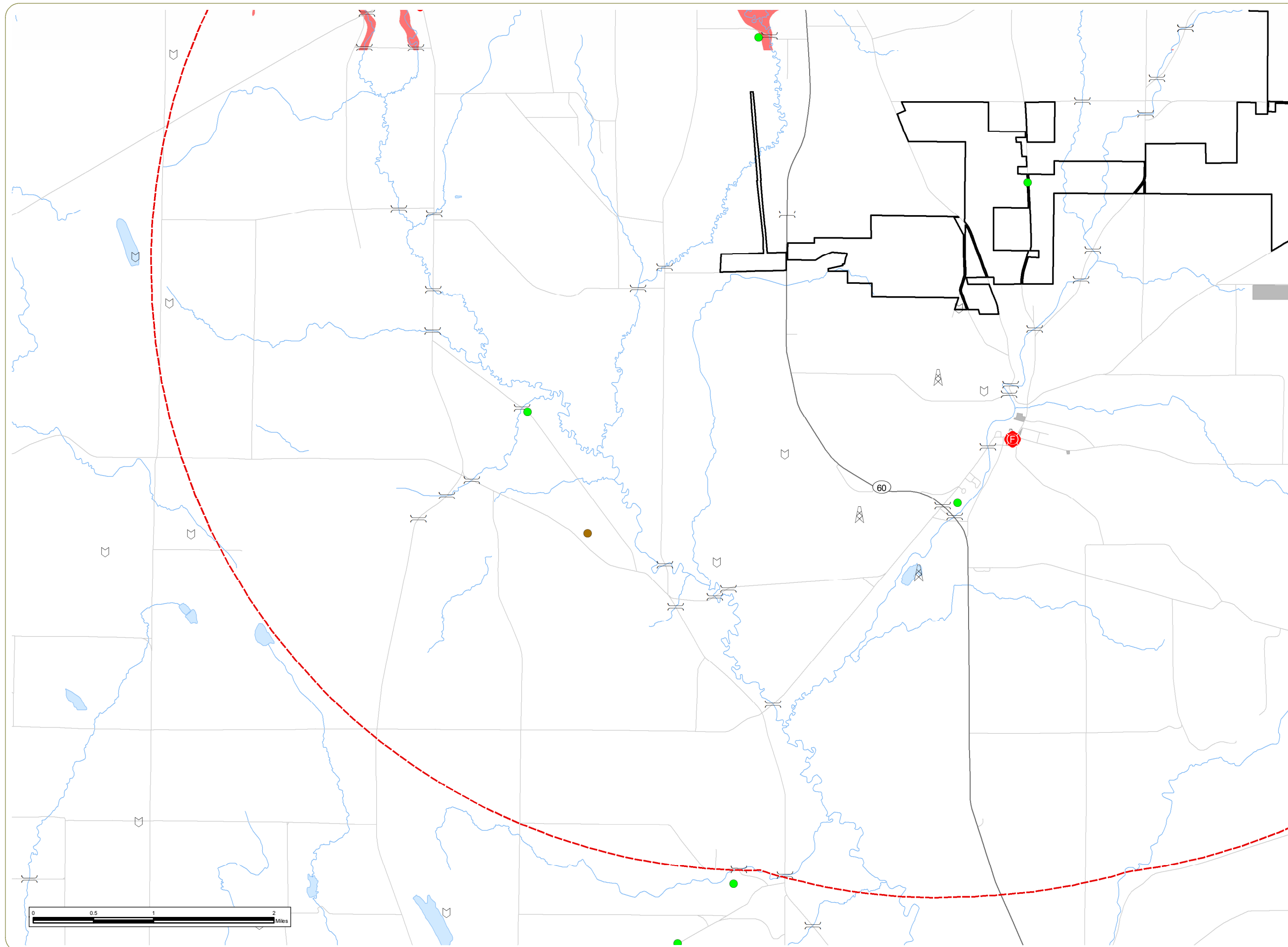


Notes:

1. Basemap: ESRI StreetMap North America, 2008.
2. The Applicant is not aware of any known evacuation routes within the Study Area.
3. This is a color graphic. Reproduction in grayscale may misrepresent the data.



www.edrdpc.com














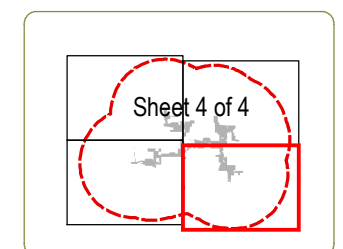
Cassadaga Wind Project

Towns of Arkwright, Charlotte, Cherry Creek, and Stockton - Chautauqua County, New York

Article 10 Application Figure 15-1: Public Health and Safety

April 2016

-  Public Water Supply
-  Police Station
-  Fire Station/EMS Station
-  Emergency Services Mobile Land Site
-  EPA Regulated Facilities
-  Bridge
-  Regulated Dam
- Flood Hazard Category**
-  Special Flood Hazard Area
-  Shaded Zone X
-  Facility Site
-  5 Mile Facility Buffer



Notes:

1. Basemap: ESRI StreetMap North America, 2008.
2. The Applicant is not aware of any known evacuation routes within the Study Area.
3. This is a color graphic. Reproduction in grayscale may misrepresent the data.

