





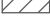

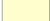
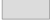



# Cassadaga Wind Project

Towns of Arkwright, Charlotte, Cherry Creek, and Stockton - Chautauqua County, New York

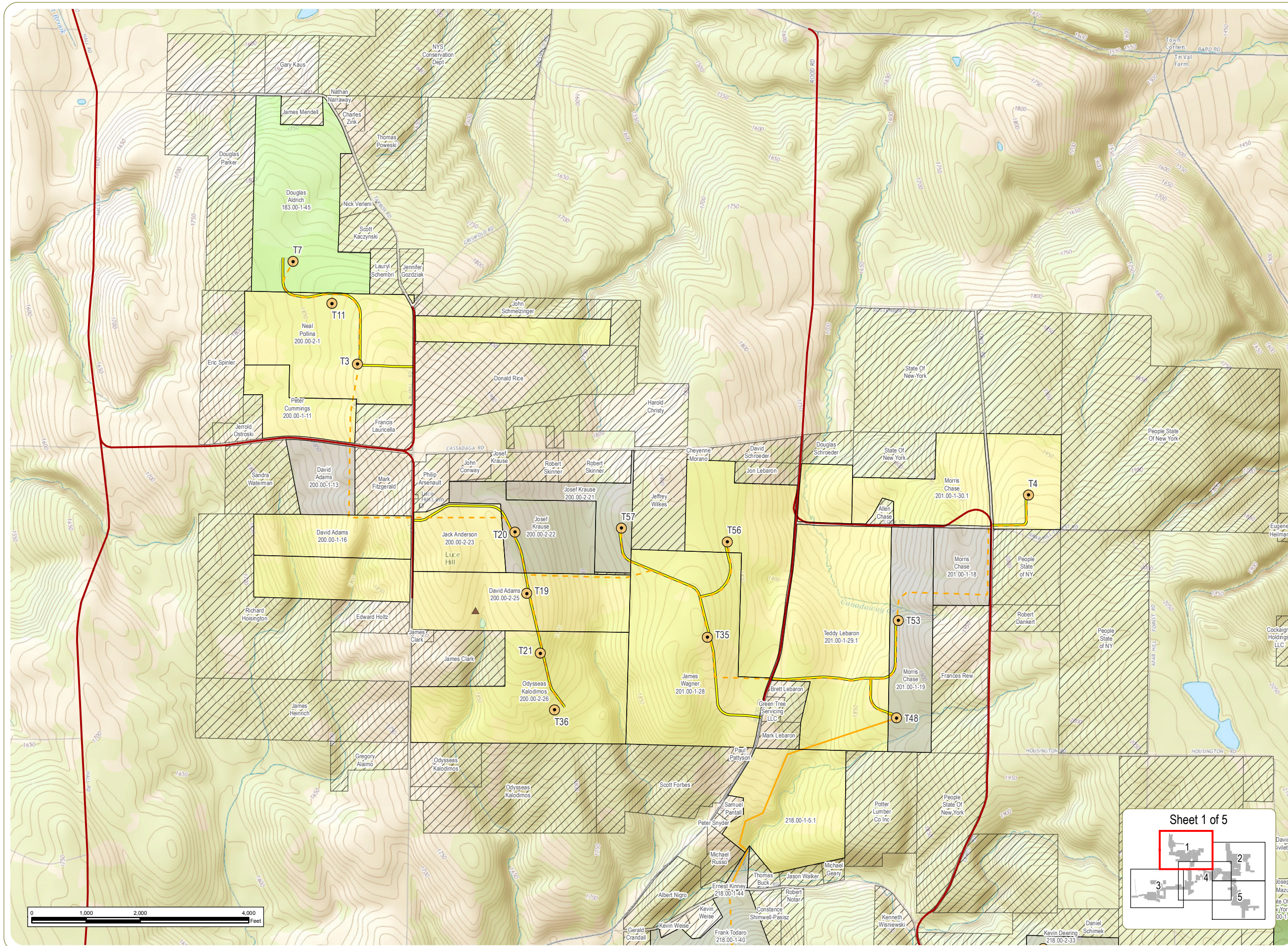
## Article 10 Application Figure 13-1: Real Property Map of Generating Site and Interconnection Facilities

April 2016

-  Wind Turbine
  -  Permanent Meteorological Tower
  -  Underground Collection Line
  -  Overhead Collection Line
  -  Access Road
  -  Proposed Transportation Route
  -  Adjacent Parcel
- Facility Parcel Land Use
-  Agricultural
  -  Residential
  -  Vacant Land
  -  Wild, Forested, Conservation Lands & Public Parks

**Notes:**

1. Basemap: "USGS TNM Topo Base Map" displayed via the USGS Topo Map Service.
2. If Facility construction requires use of a temporary concrete batch plant, it will be located at the Laydown Yard/Staging Area.
3. This is a color graphic. Reproduction in grayscale may misrepresent the data.








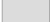



# Cassadaga Wind Project

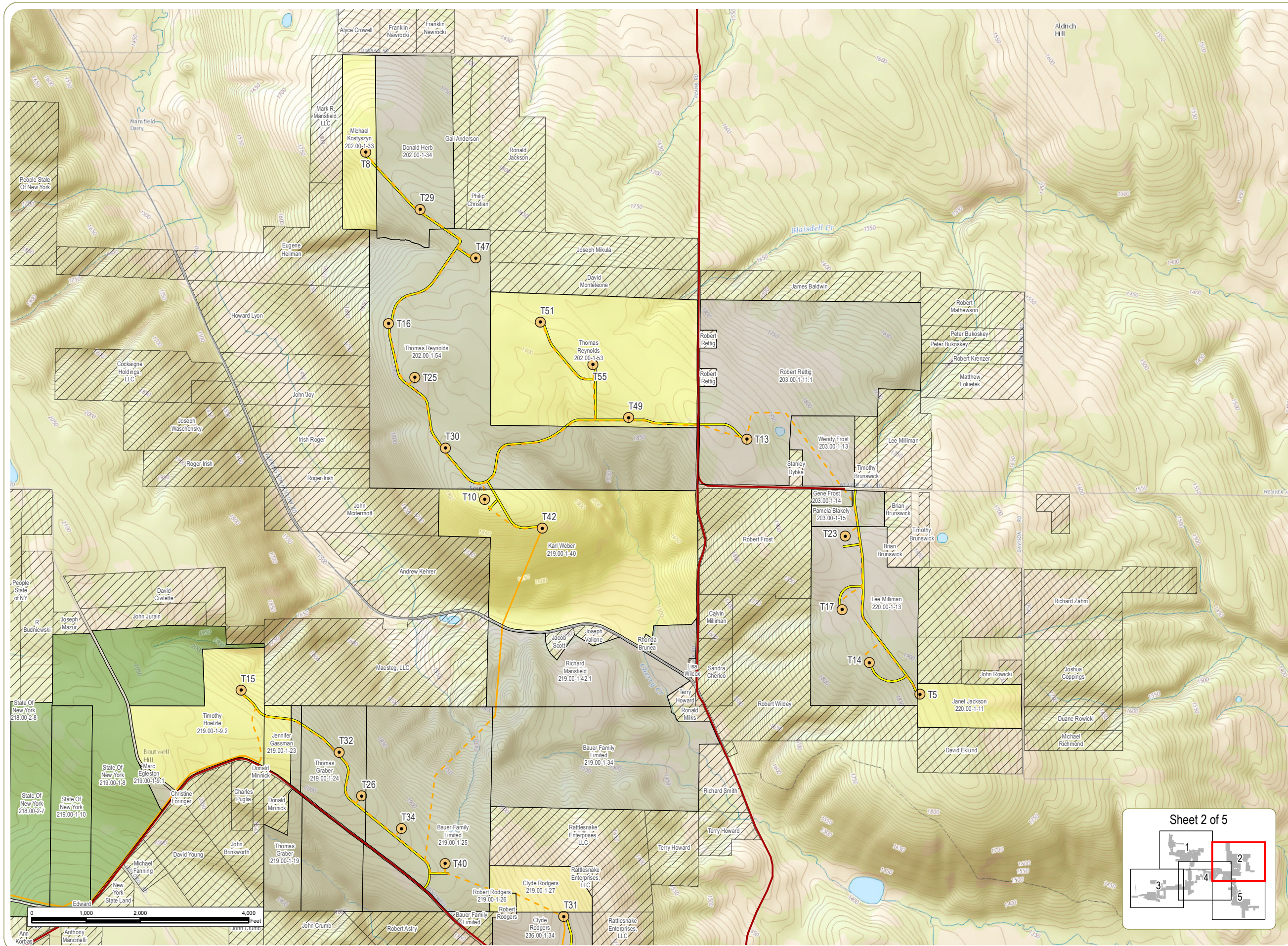
Towns of Arkwright, Charlotte, Cherry Creek, and Stockton - Chautauqua County, New York

## Article 10 Application Figure 13-1: Real Property Map of Generating Site and Interconnection Facilities

April 2016

-  Wind Turbine
  -  Underground Collection Line
  -  Overhead Collection Line
  -  Access Road
  -  Proposed Transportation Route
  -  Adjacent Parcel
- Facility Parcel Land Use
-  Residential
  -  Vacant Land
  -  Wild, Forested, Conservation Lands & Public Parks

**Notes:**  
 1. Basemap: "USGS TNM Topo Base Map" displayed via the USGS Topo Map Service.  
 2. If Facility construction requires use of a temporary concrete batch plant, it will be located at the Laydown Yard/Staging Area.  
 3. This is a color graphic. Reproduction in grayscale may misrepresent the data.



# Cassadaga Wind Project

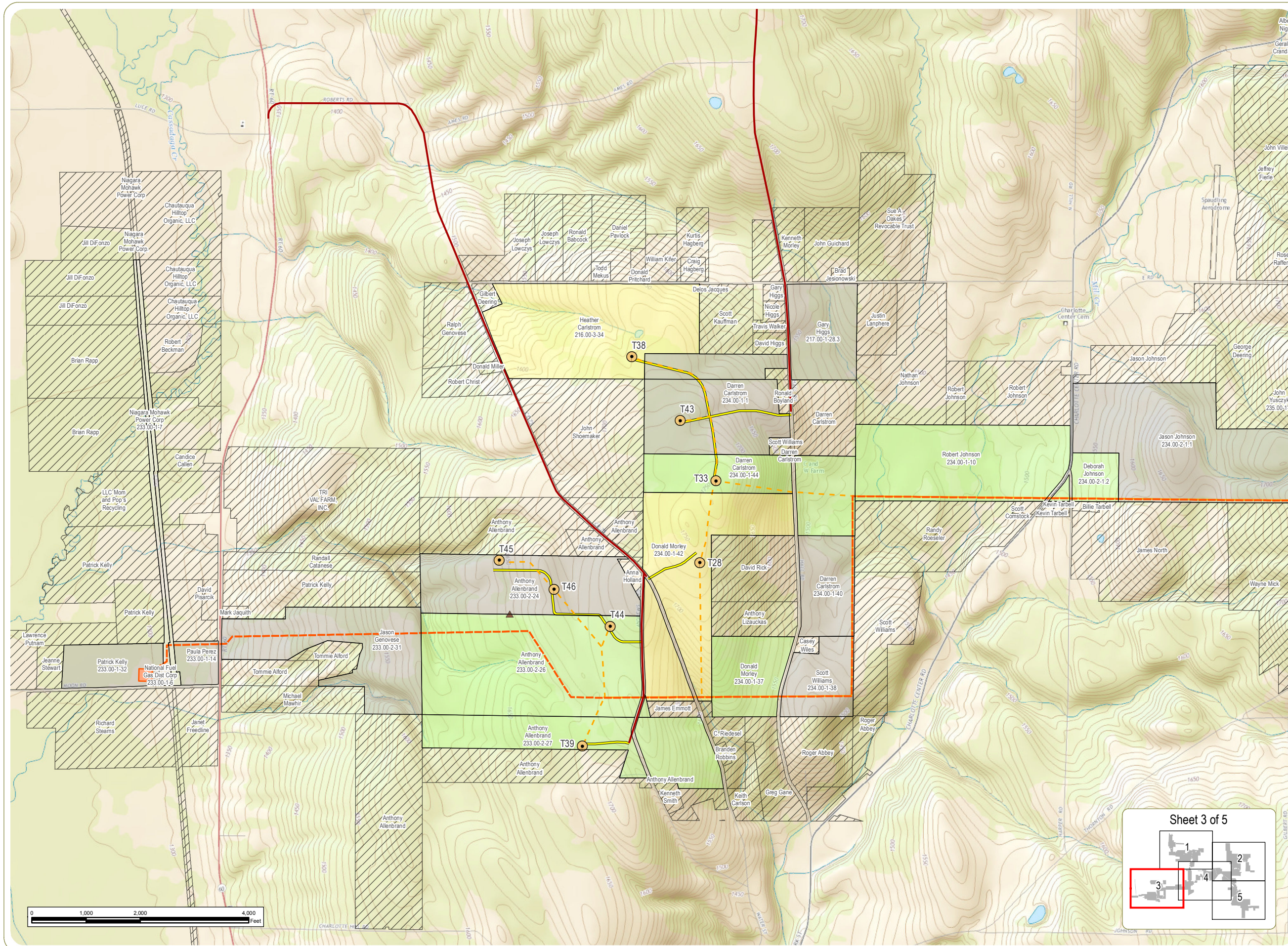
Towns of Arkwright, Charlotte, Cherry Creek, and Stockton - Chautauqua County, New York

## Article 10 Application Figure 13-1: Real Property Map of Generating Site and Interconnection Facilities

April 2016

- Wind Turbine
  - Permanent Meteorological Tower
  - 115 kV Generator Lead Line
  - Underground Collection Line
  - Overhead Collection Line
  - Access Road
  - Proposed Transportation Route
  - POI Substation
  - Adjacent Parcel
- Facility Parcel Land Use
- Uncategorized
  - Agricultural
  - Residential
  - Vacant Land

**Notes:**  
 1. Basemap: "USGS TNM Topo Base Map" displayed via the USGS Topo Map Service.  
 2. If Facility construction requires use of a temporary concrete batch plant, it will be located at the Laydown Yard/Staging Area.  
 3. This is a color graphic. Reproduction in grayscale may misrepresent the data.



# Cassadaga Wind Project

Towns of Arkwright, Charlotte, Cherry Creek, and Stockton - Chautauqua County, New York

## Article 10 Application Figure 13-1: Real Property Map of Generating Site and Interconnection Facilities

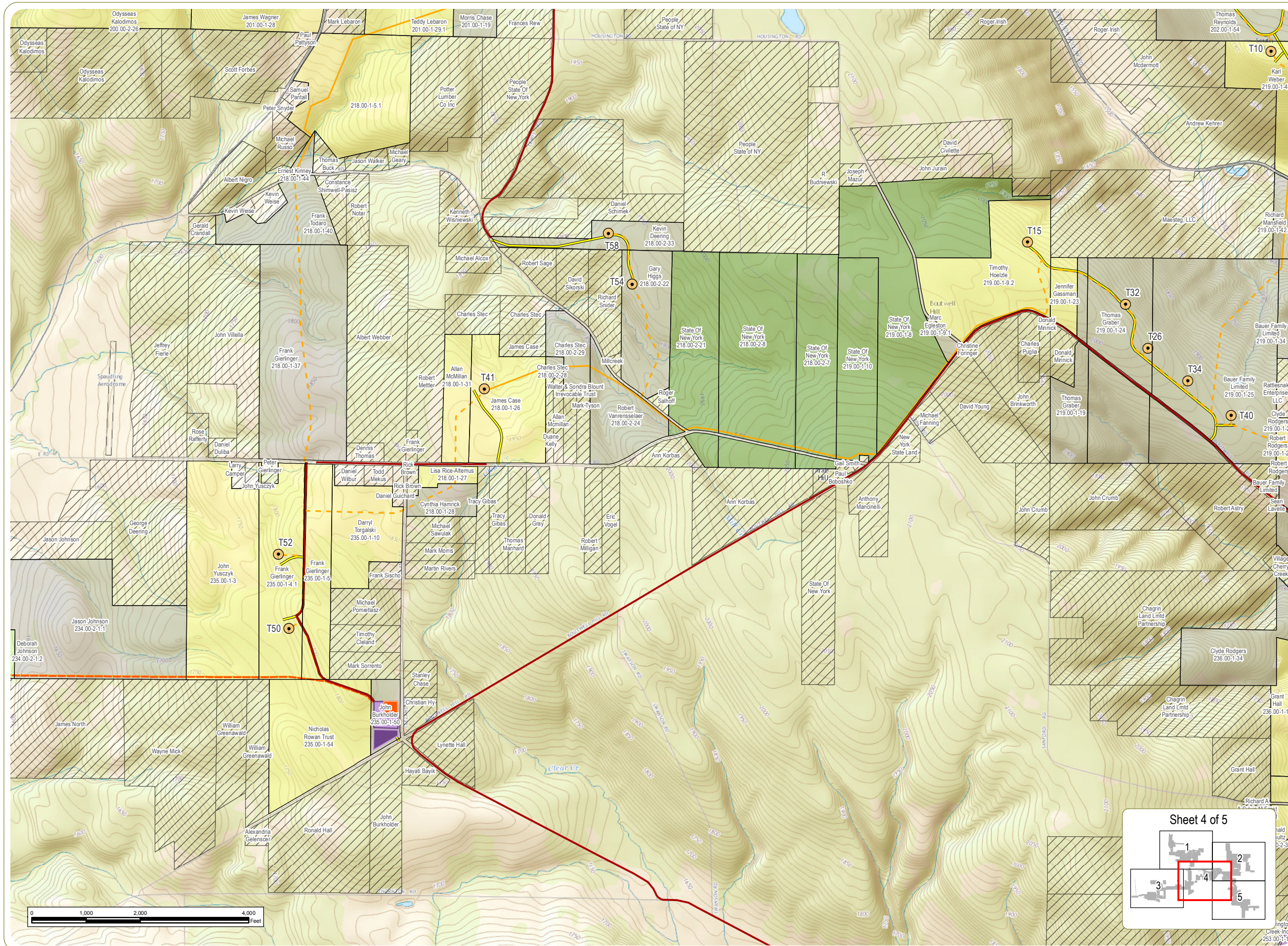
April 2016

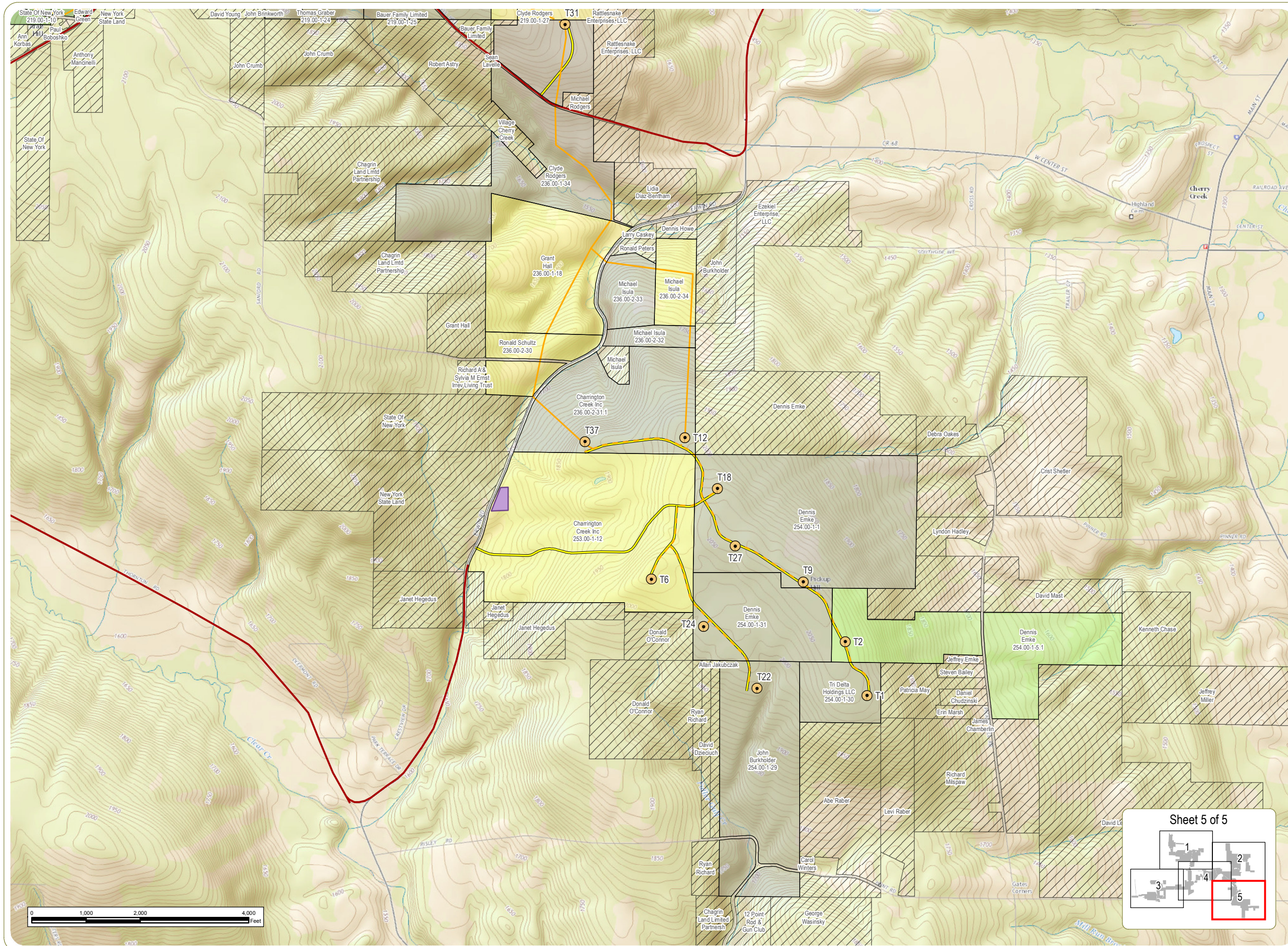
- Wind Turbine
  - 115 kV Generator Lead Line
  - Underground Collection Line
  - Overhead Collection Line
  - Access Road
  - Proposed Transportation Route
  - Collection Substation
  - O&M Building
  - Laydown Yard/Staging Area
  - Adjacent Parcel
- Facility Parcel Land Use
- Agricultural
  - Residential
  - Vacant Land
  - Wild, Forested, Conservation Lands & Public Parks

- Notes:**
1. Basemap: "USGS TNM Base Map" displayed via the USGS Topo Map Service.
  2. If facility construction requires use of a temporary concrete batch plant, it will be located at the Laydown Yard/Staging Area.
  3. This is a color graphic. Reproduction in grayscale may misrepresent the data.

**everpower™**

www.edrdpc.com





# Cassadaga Wind Project

Towns of Arkwright, Charlotte, Cherry Creek, and Stockton - Chautauqua County, New York

## Article 10 Application Figure 13-1: Real Property Map of Generating Site and Interconnection Facilities

April 2016

- Wind Turbine
  - Underground Collection Line
  - Overhead Collection Line
  - Access Road
  - Proposed Transportation Route
  - Laydown Yard/Staging Area
  - Adjacent Parcel
- Facility Parcel Land Use
- Agricultural
  - Residential
  - Vacant Land
  - Wild, Forested, Conservation Lands & Public Parks

**Notes:**  
 1. Basemap: "USGS TNM Topo Base Map" displayed via the USGS Topo Map Service.  
 2. If Facility construction requires use of a temporary concrete batch plant, it will be located at the Laydown Yard/Staging Area.  
 3. This is a color graphic. Reproduction in grayscale may misrepresent the data.



www.edrdpc.com

