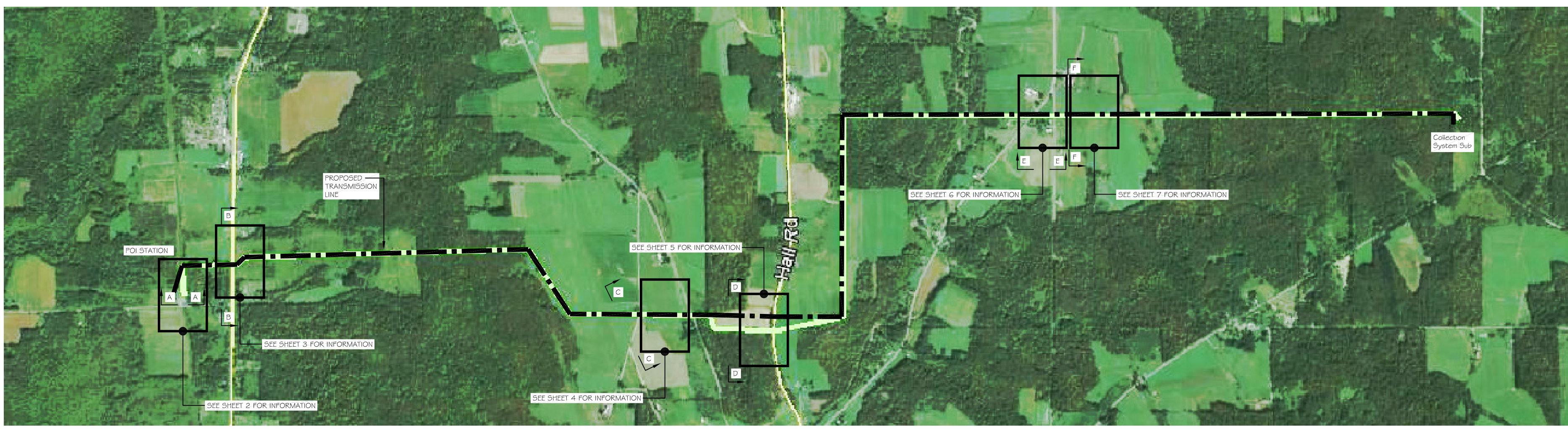


A | B | C | D | E | F | G

1



1

2

2

OVERVIEW DRAWING

3



3

4

4

5

5

OVERVIEW MAP

REV.:	DATE:	DESCRIPTION:	DRAWN BY:	CHECKED BY:	APPROVED BY:
D	5/4/16	ISSUE TO CLIENT	SH	AC	EP



CASSADAGA WIND EMF STUDY  
 APPLIED HIGH VOLTAGE  
 GENERAL AREA OVERVIEW  
 PROPOSED 115KV LAYOUT  
 UNIQUE CROSS SECTIONS & CLEARANCES

PLOT SCALE: ARCH 0 1 2 ENGRG 0 1 2		
PROJ. NO.:	SCALE:	
AHV-15-002	NONE	
DWG. NO.:	SHEET:	REV.:
SK1	1	D

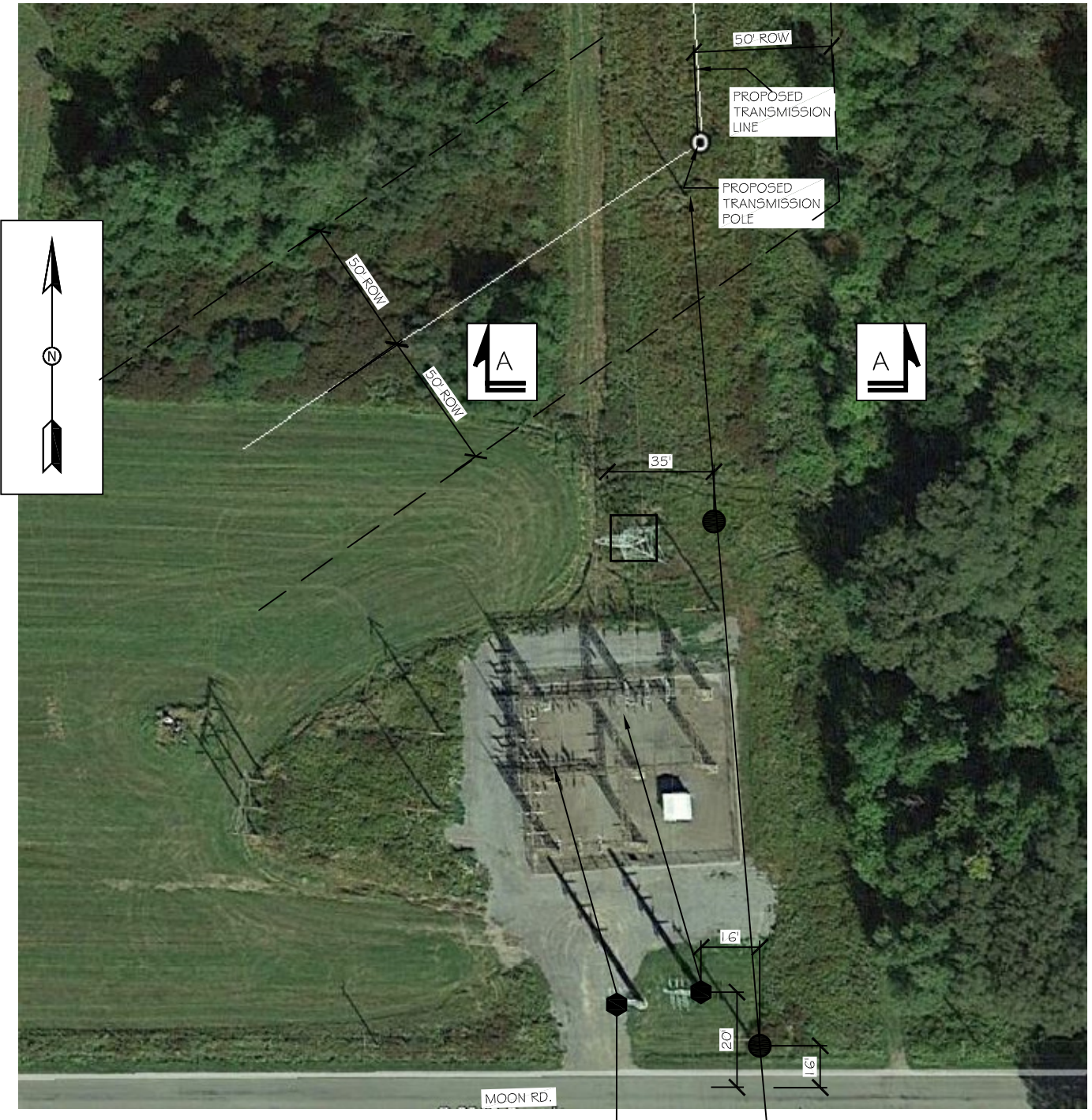
A | B | C | D | E | F | G



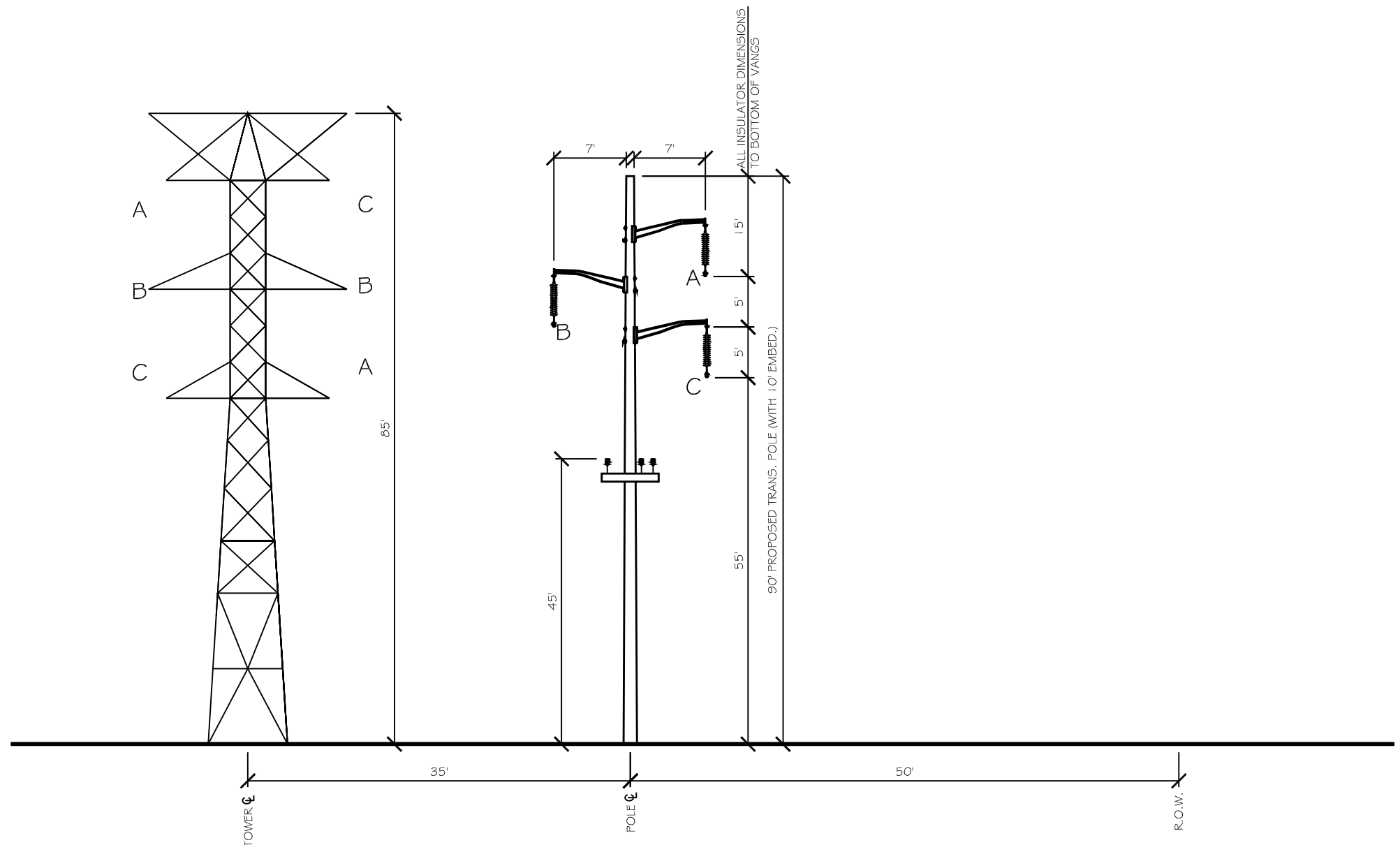
A | B | C | D | E | F | G

1

1



PLAN VIEW



ELEVATION A-A

4

4

5

5

REV.:	DATE:	DESCRIPTION:	DRAWN BY:	CHECKED BY:	APPROVED BY:
C	4/6/16	ISSUE TO CLIENT	SH	AC	EP



CASSADAGA WIND EMF STUDY  
APPLIED HIGH VOLTAGE

PROPOSED 115KV LAYOUT  
SECTION A-A

PLOT SCALE: ARCH ENGRG		
PROJ. NO.:	SCALE:	
AHV-15-002	NONE	
DWG. NO.:	SHEET:	REV.:
SK1	2	C

A | B | C | D | E | F | G



A

B

C

D

E

F

G

1

2

3

4

5

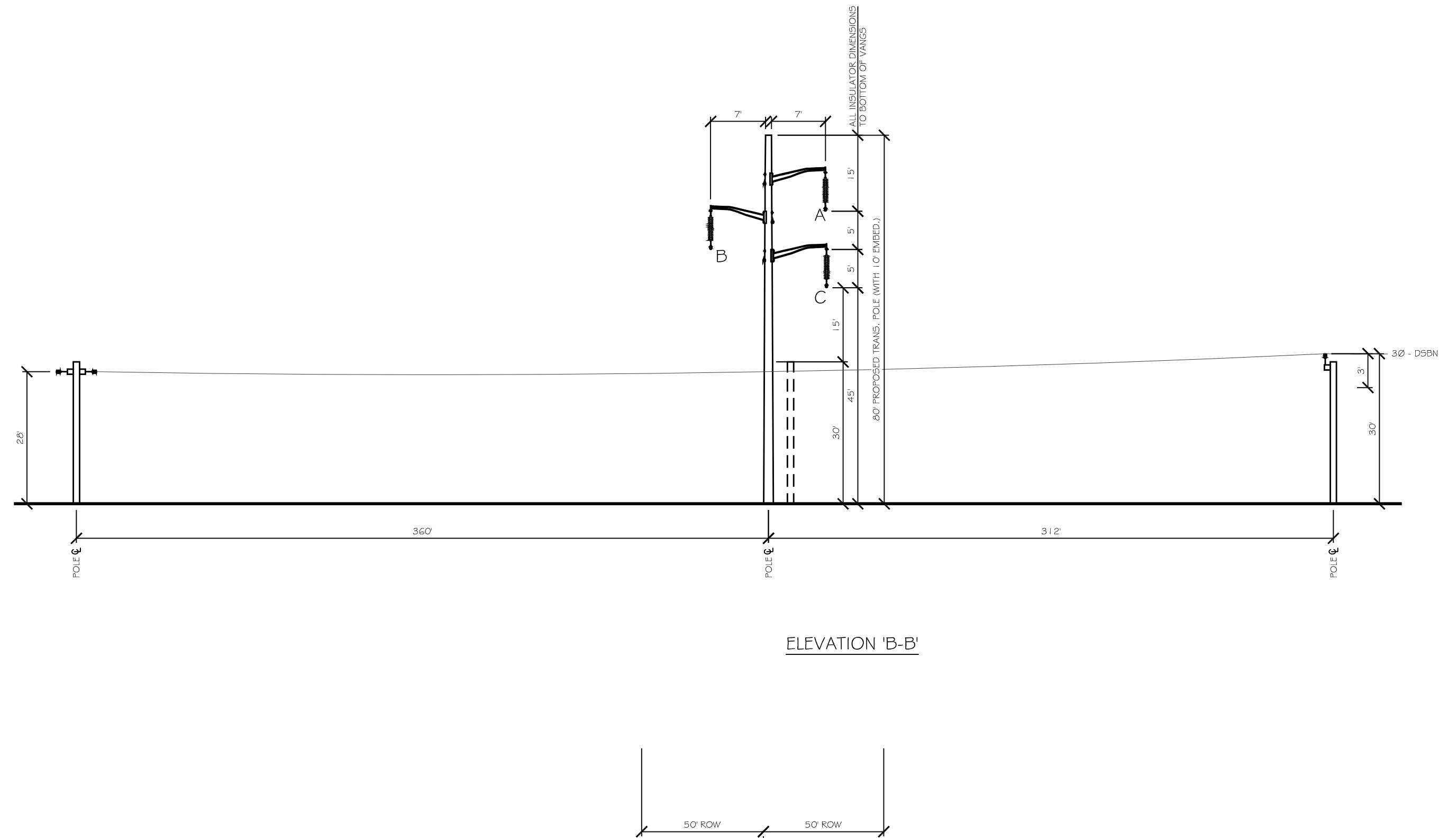
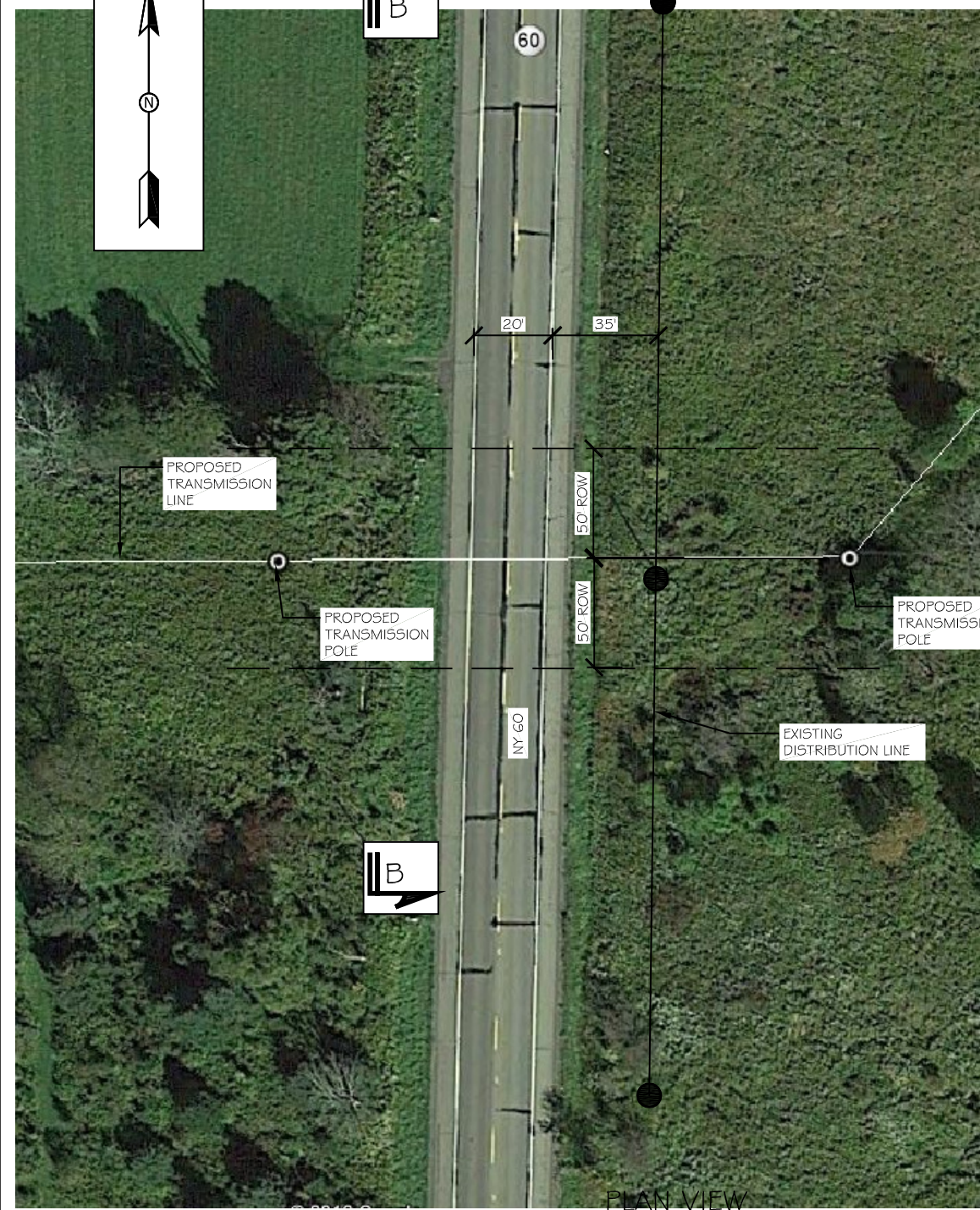
1

2

3

4

5



REV.:	DATE:	DESCRIPTION:	DRAWN BY:	CHECKED BY:	APPROVED BY:
C	4/6/16	ISSUE TO CLIENT	SH	AC	EP



CASSADAGA WIND EMF STUDY  
APPLIED HIGH VOLTAGE

PROPOSED 115KV LAYOUT  
SECTION B-B

PLOT SCALE:		
ARCH	0	1 2
ENGRG	0	1 2
PROJ. NO.:	SCALE:	
AHV-15-002	NONE	
DWG. NO.:	SHEET:	REV.:
SK1	3	C

A

B

C

D

E

F

G



A | B | C | D | E | F | G

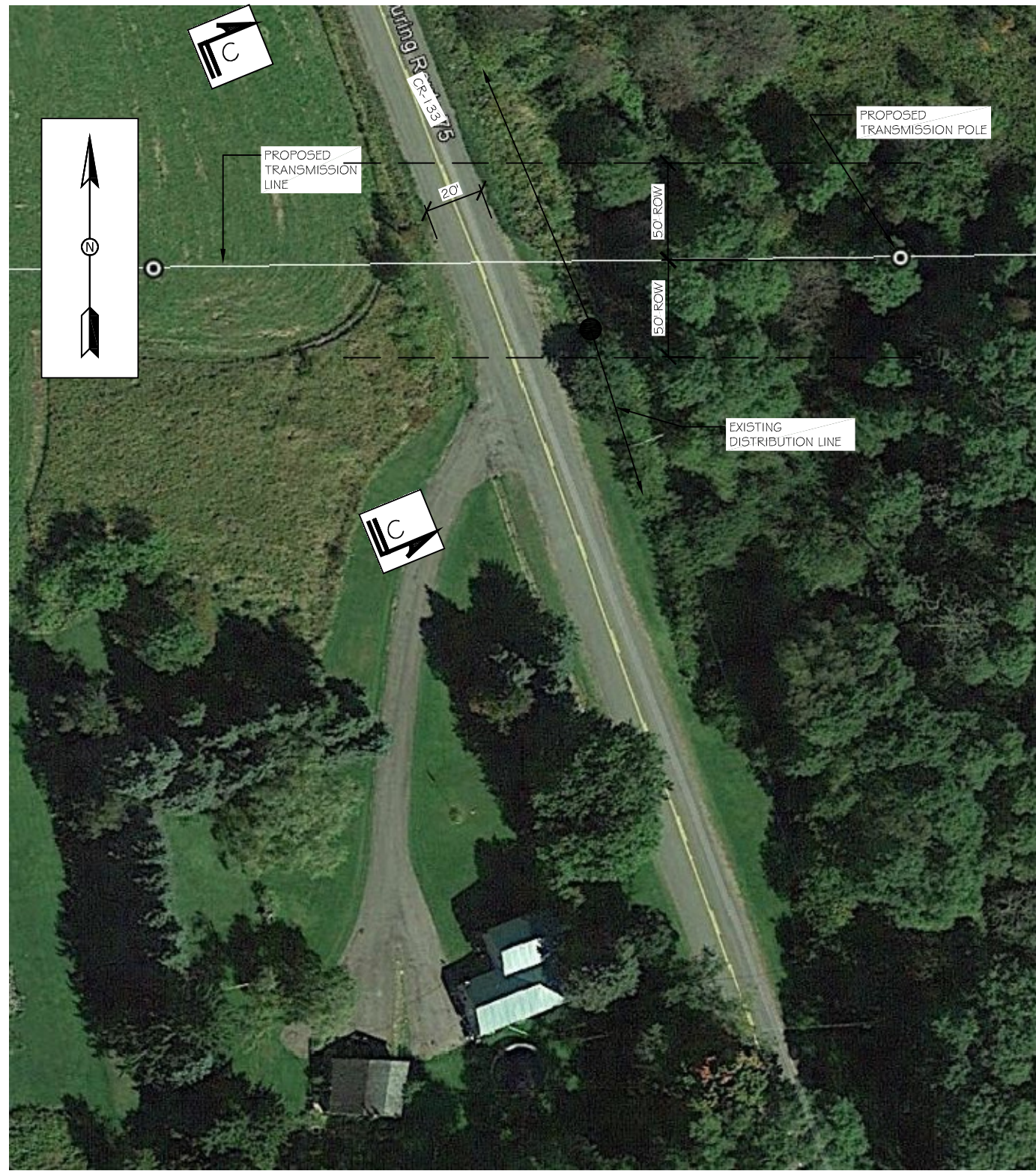
1

2

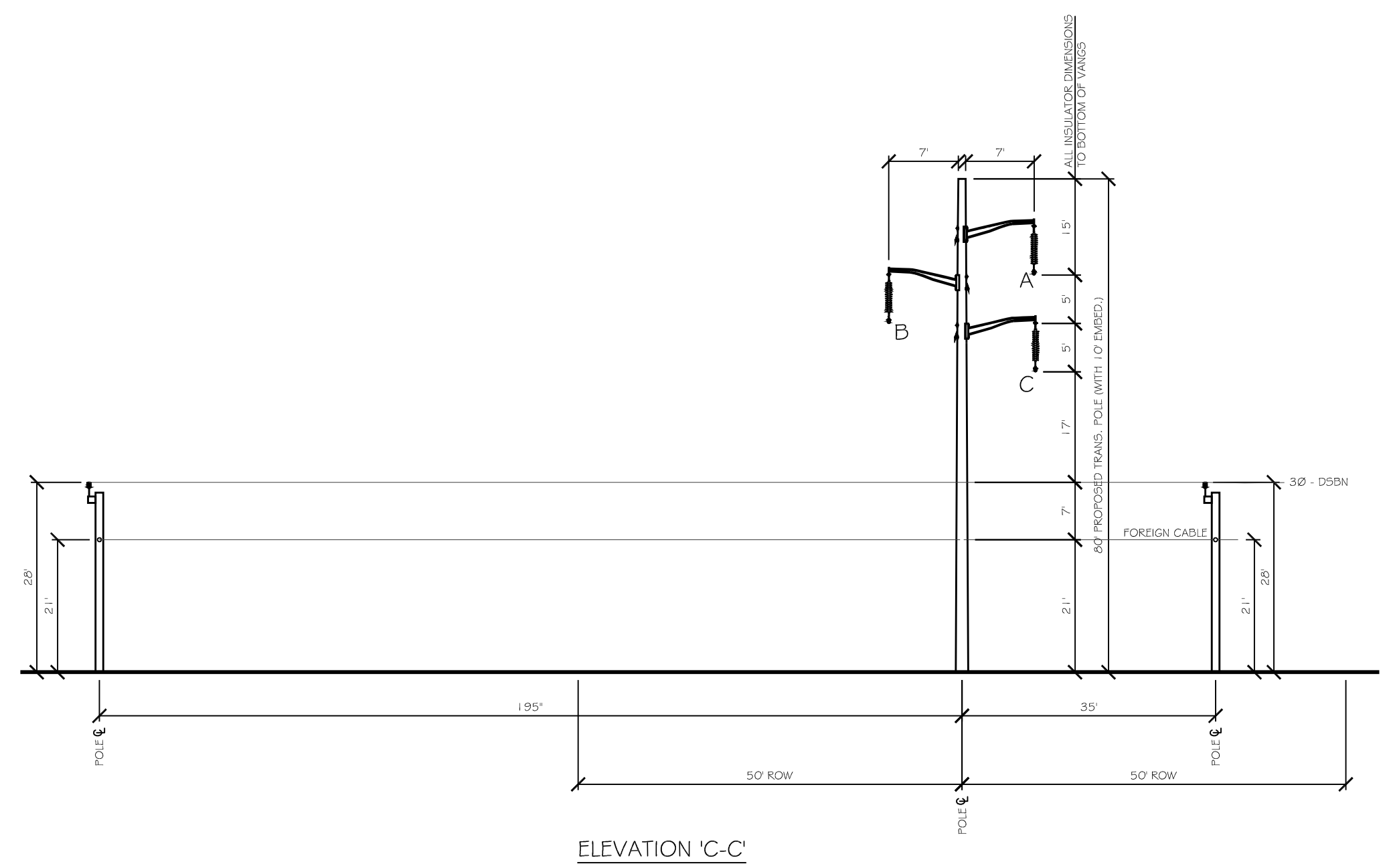
3

4

5



PLAN VIEW



ELEVATION 'C-C'

1

2

3

4

5

REV.:	DATE:	DESCRIPTION:	DRAWN BY:	CHECKED BY:	APPROVED BY:
B	3/7/16	ISSUE TO CLIENT	SH	AC	EP
A	2/12/16	ISSUE TO CLIENT	SH	AC	EP



CASSADAGA WIND EMF STUDY  
APPLIED HIGH VOLTAGE

PROPOSED 115KV LAYOUT  
SECTION C-C

PLOT SCALE: ARCH 0 1 2 ENGRG 0 1 2		
PROJ. NO.:	SCALE:	
AHV-15-002	NONE	
DWG. NO.:	SHEET:	REV.:
SK1	4	B

A | B | C | D | E | F | G



A | B | C | D | E | F | G

1

1

2

2

3

3

4

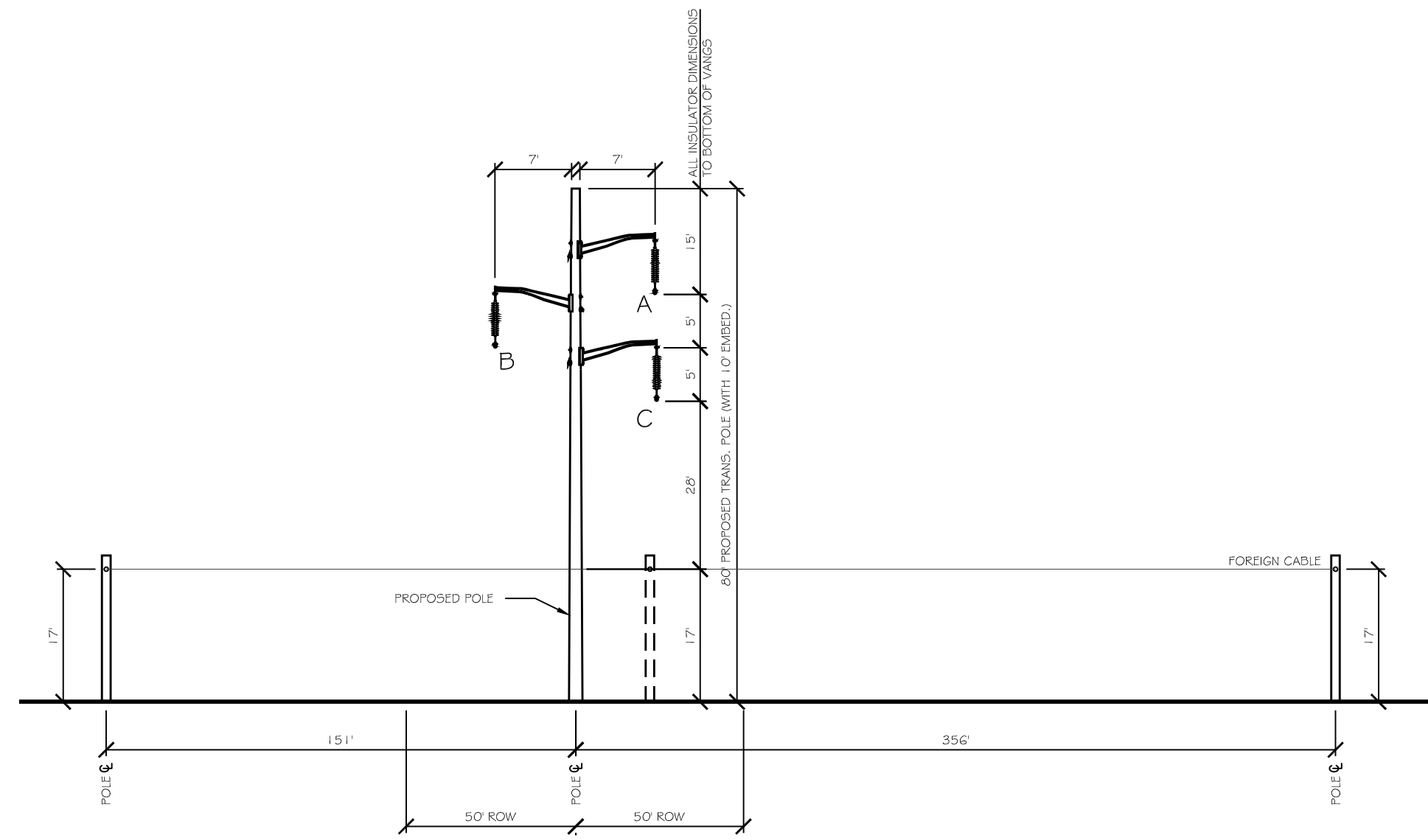
4

5

5



PLAN VIEW



ELEVATION 'D-D'

REV.:	DATE:	DESCRIPTION:	DRAWN BY:	CHECKED BY:	APPROVED BY:
C	4/6/16	ISSUE TO CLIENT	SH	AC	EP



CASSADAGA WIND EMF STUDY  
 APPLIED HIGH VOLTAGE

PROPOSED 115KV LAYOUT  
 SECTION D-D

PLOT SCALE:		
ARCH	0	1
ENGRG	0	2
PROJ. NO.:	SCALE:	
AHV-15-002	NONE	
DWG. NO.:	SHEET:	REV.:
SK1	5	C

A | B | C | D | E | F | G



A | B | C | D | E | F | G

1

2

3

1

2

3



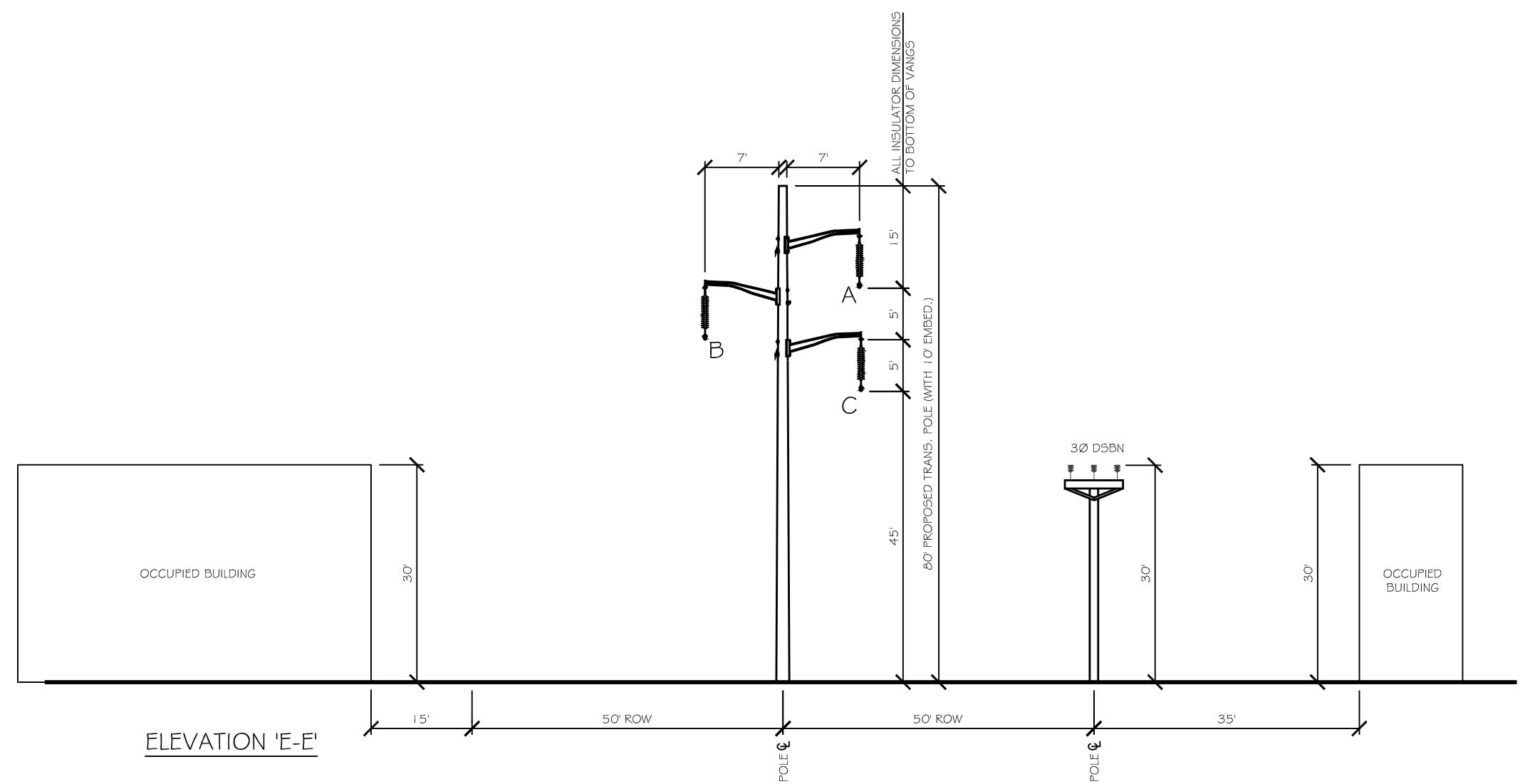
PLAN VIEW

4

5

4

5



ELEVATION 'E-E'

REV.:	DATE:	DESCRIPTION:	DRAWN BY:	CHECKED BY:	APPROVED BY:
C	4/6/16	ISSUE TO CLIENT	SH	AC	EP



CASSADAGA WIND EMF STUDY  
APPLIED HIGH VOLTAGE

PROPOSED 115KV LAYOUT  
SECTION E-E

PLOT SCALE:	
ARCH	0 1 2
ENGRG	0 1 2
PROJ. NO.:	SCALE:
AHV-15-002	NONE
DWG. NO.:	SHEET:
SK1	6
	REV.:
	C

A | B | C | D | E | F | G



A | B | C | D | E | F | G

1

1

2

2

3

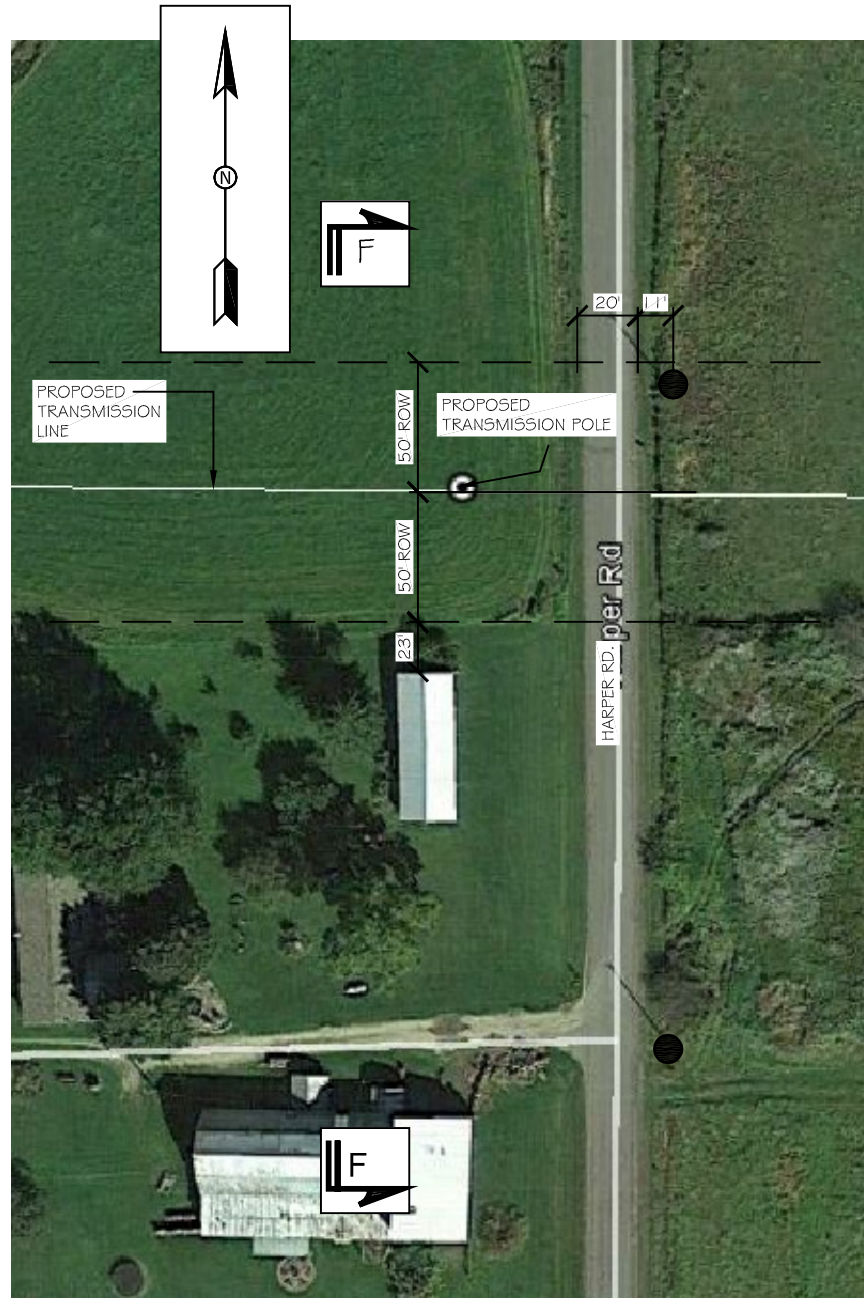
3

4

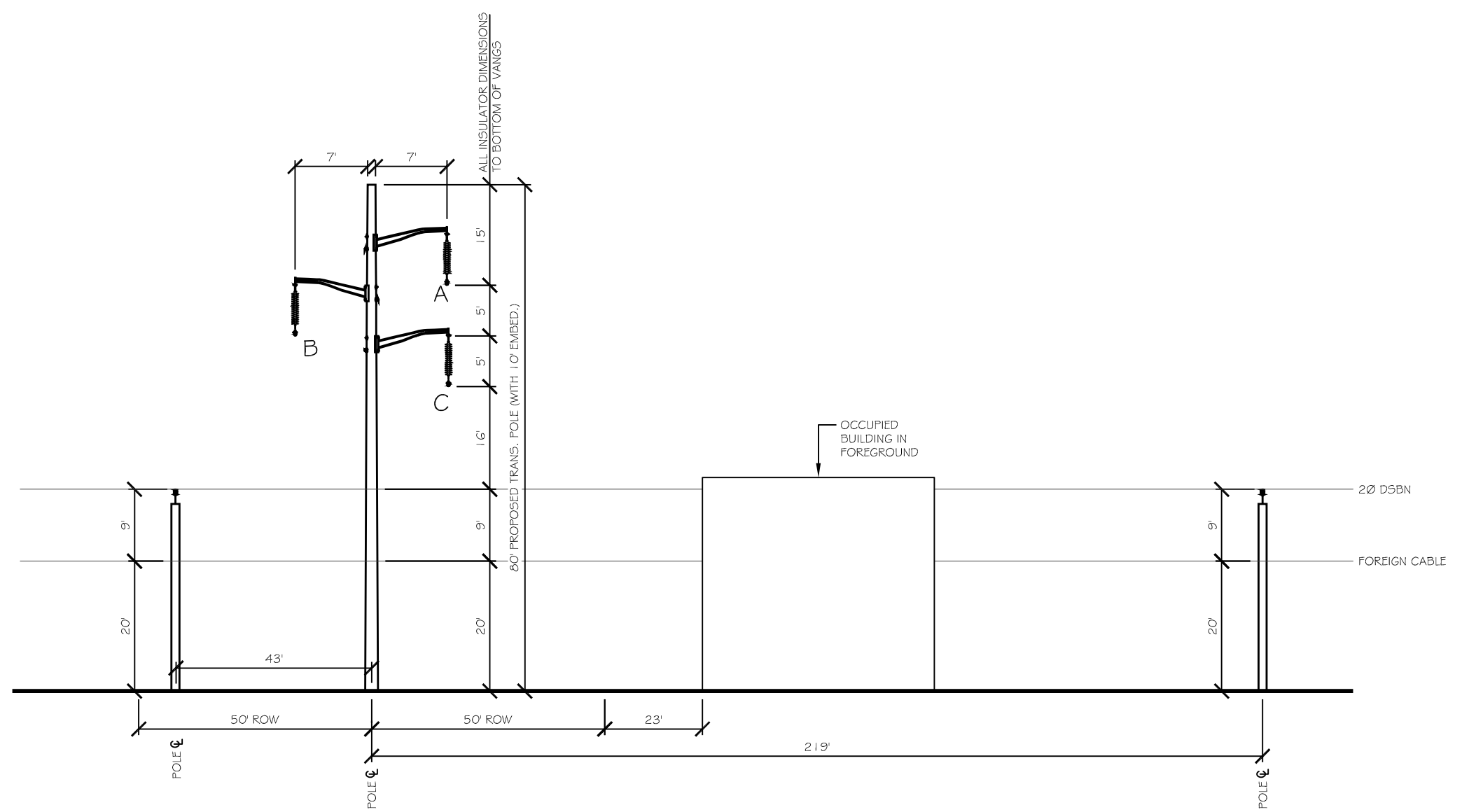
4

5

5



PLAN VIEW



ELEVATION 'F-F'

REV.:	DATE:	DESCRIPTION:	DRAWN BY:	CHECKED BY:	APPROVED BY:
C	4/6/16	ISSUE TO CLIENT	SH	AC	EP



CASSADAGA WIND EMF STUDY  
APPLIED HIGH VOLTAGE

PROPOSED 115KV LAYOUT  
SECTION F-F

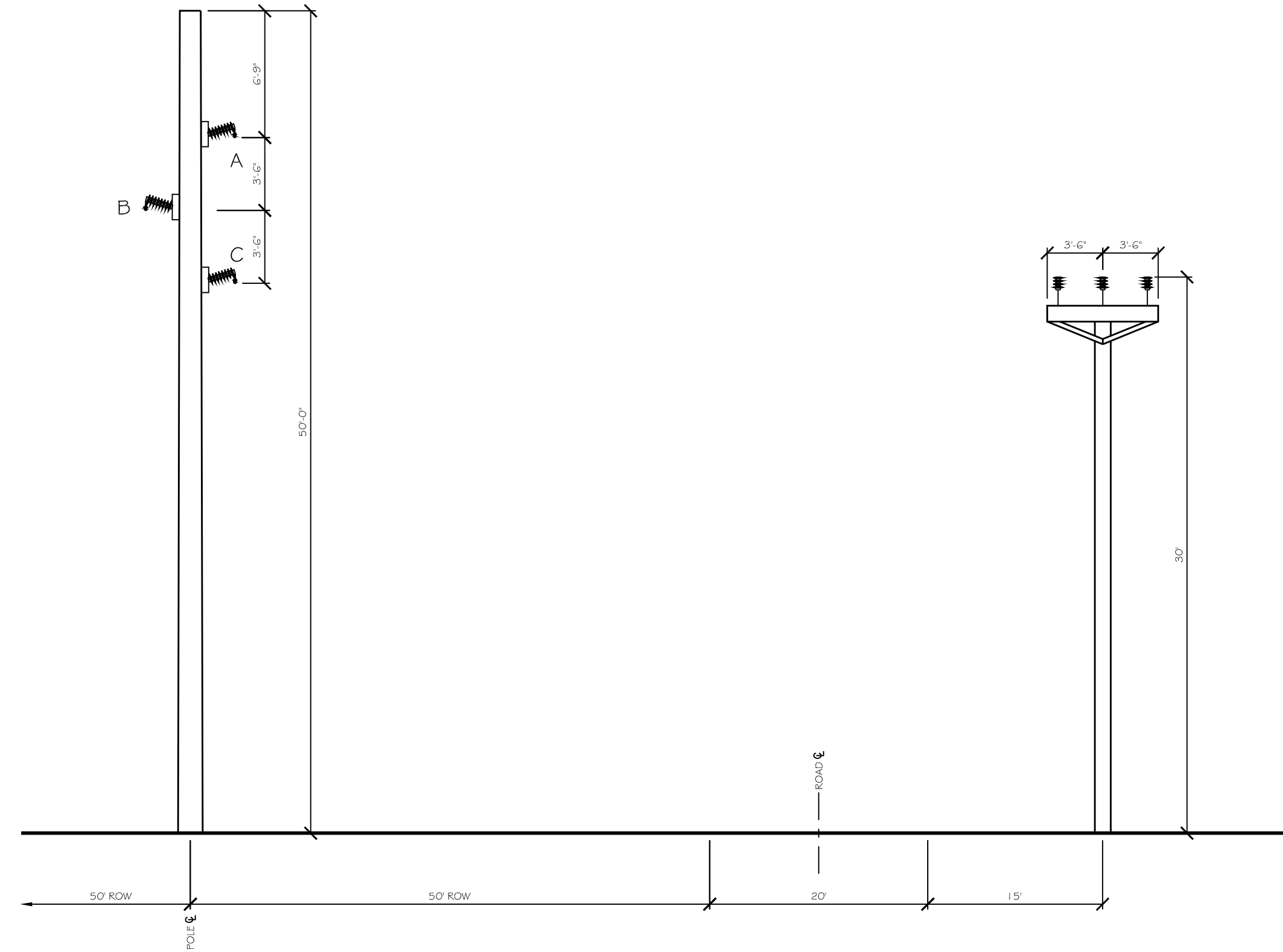
PLOT SCALE:		
ARCH	0	1
ENGRG	0	2
PROJ. NO.:	SCALE:	
AHV-15-002	NONE	
DWG. NO.:	SHEET:	REV.:
SK1	7	C

A | B | C | D | E | F | G

A | B | C | D | E | F | G

1  
2  
3  
4  
5

1  
2  
3  
4  
5



TYPICAL COLLECTION LINE  
PARALLELING D5BN

REV.:	DATE:	DESCRIPTION:	DRAWN BY:	CHECKED BY:	APPROVED BY:	 <b>MAIN LINE</b> <small>ENERGY CONSULTANTS LLC WWW.MAINLEC.COM</small>	CASSADAGA WIND EMF STUDY APPLIED HIGH VOLTAGE		<small>PLOT SCALE:</small> <small>ARCH</small> 0 1 2 <small>ENGRG</small> 0 1 2	
								<small>PROJ. NO.:</small> AHV-15-002	<small>SCALE:</small> NONE	
								<small>DWG. NO.:</small> SK1	<small>SHEET:</small> 8	<small>REV.:</small> C
C	4/6/16	ISSUE TO CLIENT	SH	AC	EP			PROPOSED 34.55kV COLLECTION SYSTEM TYP. OVERHEAD PARALLEL EXISTING DISTR.		

A | B | C | D | E | F | G



A

B

C

D

E

F

G

1

1

2

2

3

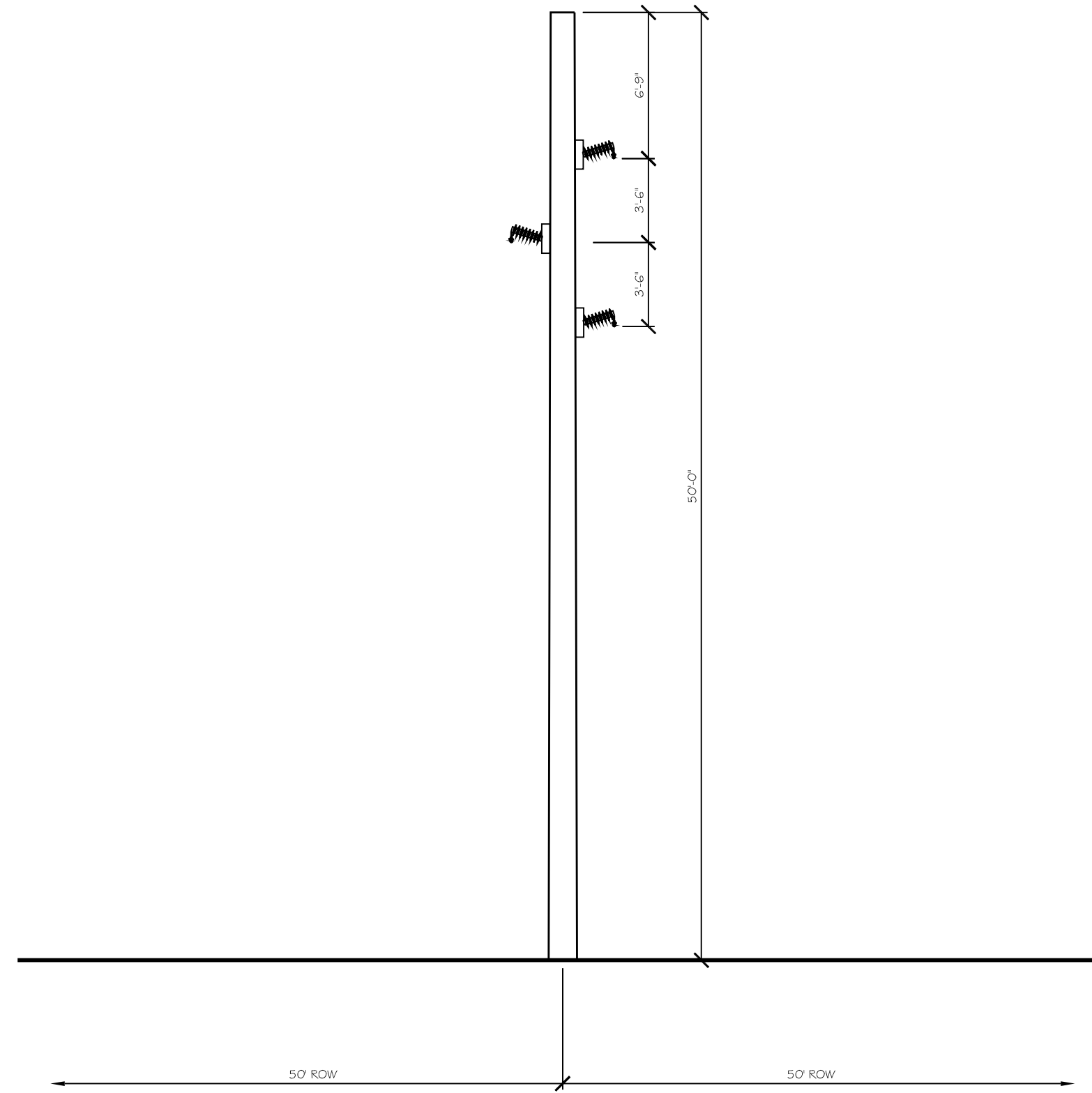
3

4

4

5

5



TYPICAL COLLECTION LINE  
34kV 3Ø D

REV.:	DATE:	DESCRIPTION:	DRAWN BY:	CHECKED BY:	APPROVED BY:
C	4/6/16	ISSUE TO CLIENT	SH	AC	EP



CASSADAGA WIND EMF STUDY  
APPLIED HIGH VOLTAGE

PROPOSED 34.5kV COLLECTION SYSTEM  
TYPICAL OVERHEAD ARRANGEMENT

PLOT SCALE:		0	1	2
ARCH		+	+	+
ENGRG		+	+	+
0		1		2
PROJ. NO.:	SCALE:			
AHV-15-002	NONE			
DWG. NO.:	SHEET:	REV.:		
SK1	9	C		

A

B

C

D

E

F

G



A

B

C

D

E

F

G

1

1

2

2

3

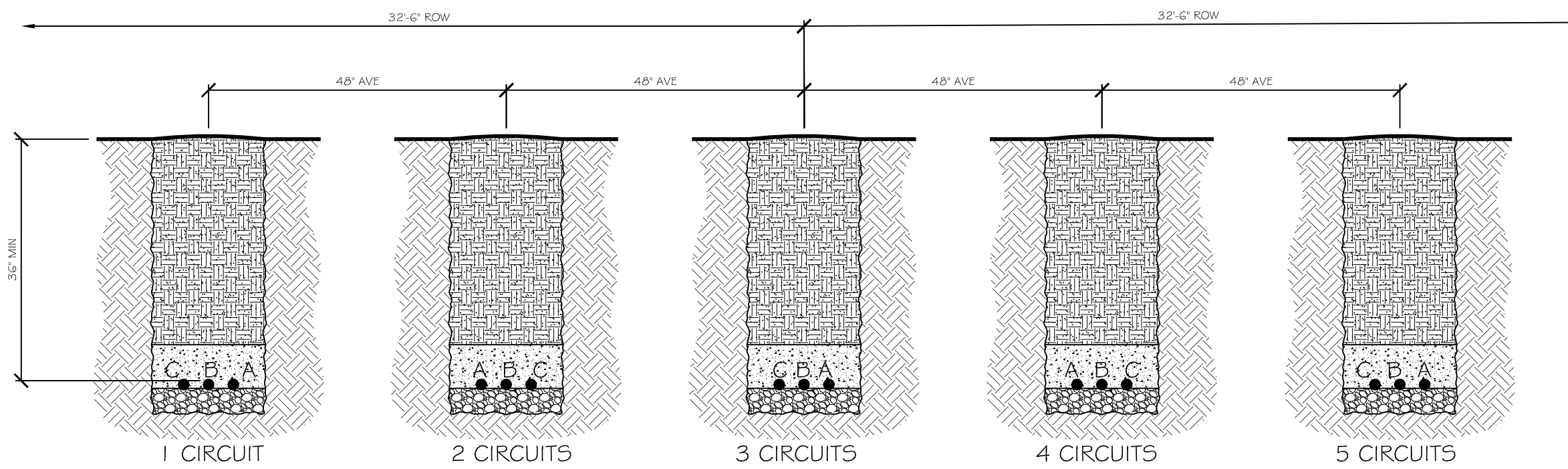
3

4

4

5

5



TYPICAL UNDER GROUND COLLECTION LINE  
 34kV 3Ø  
 ONE THROUGH FIVE PARALLEL CIRCUITS.  
 EQUIVALENT SPACING

REV.:	DATE:	DESCRIPTION:	DRAWN BY:	CHECKED BY:	APPROVED BY:
C	4/6/16	ISSUE TO CLIENT	SH	AC	EP



CASSADAGA WIND EMF STUDY  
 APPLIED HIGH VOLTAGE

PROPOSED 34.5kV COLLECTION SYSTEM  
 TYPICAL UNDERGROUND ARRANGEMENT

PLOT SCALE:		ARCH 0 1 2	
ENGRG 0 1 2		SCALE:	
PROJ. NO.:	SCALE:		
AHV-15-002	NONE		
DWG. NO.:	SHEET:	REV.:	
SK1	10	C	

A

B

C

D

E

F

G



A | B | C | D | E | F | G

1

1

2

2

3

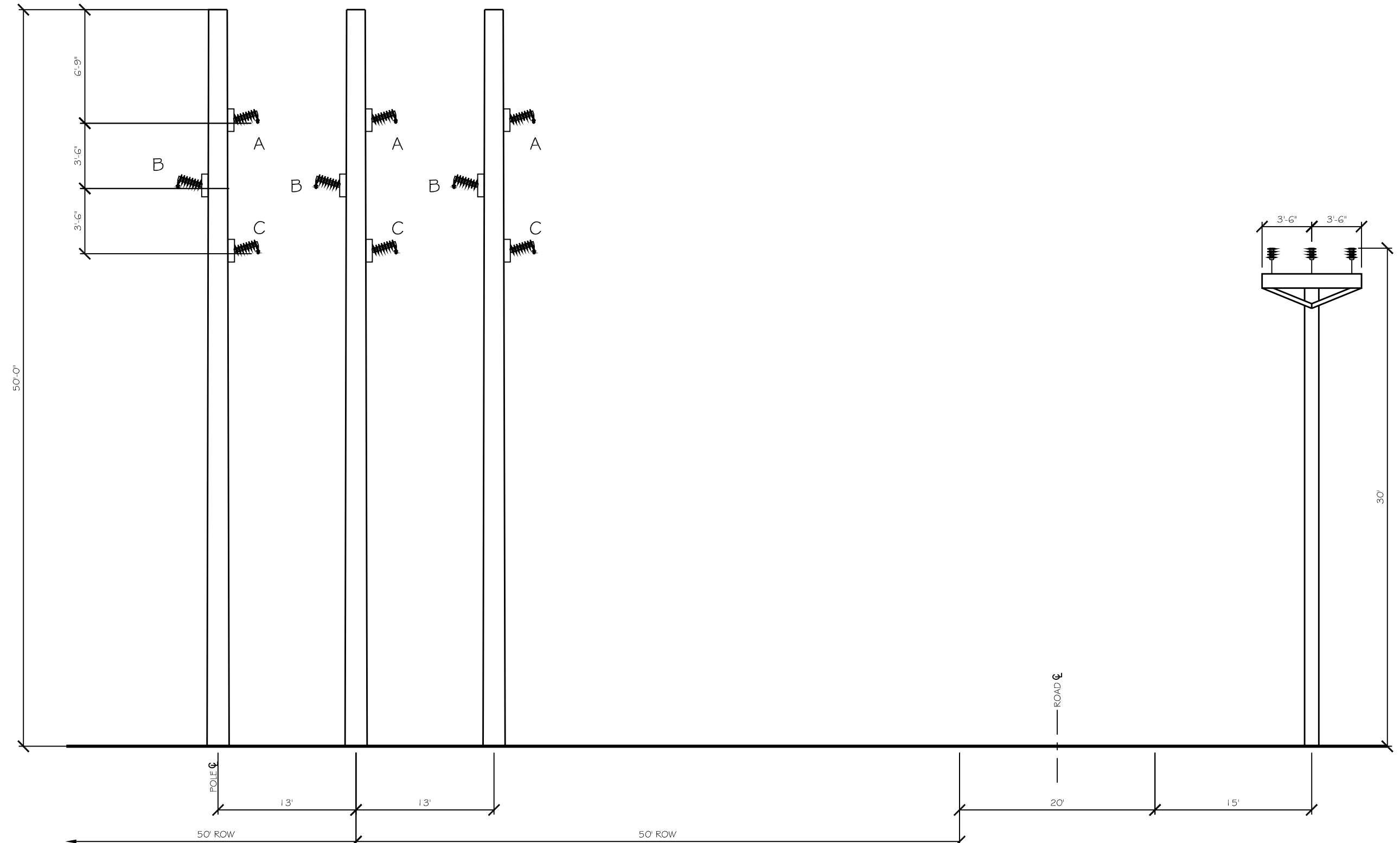
3

4

4

5

5



TYPICAL TRI-COLLECTION LINE  
PARALLELING D5BN

REV.:	DATE:	DESCRIPTION:	DRAWN BY:	CHECKED BY:	APPROVED BY:
C	4/6/16	ISSUE TO CLIENT	SH	AC	EP



CASSADAGA WIND EMF STUDY  
APPLIED HIGH VOLTAGE

PROPOSED 34.55kV COLLECTION SYSTEM  
TYP. OVERHEAD PARALLEL EXISTING DISTR.

PLOT SCALE: ARCH 0 1 2 ENGRG 0 1 2	
PROJ. NO.: AHV-15-002	SCALE: NONE
DWG. NO.: SK1	SHEET: 11
REV.: C	

A | B | C | D | E | F | G



A

B

C

D

E

F

G

1

2

3

4

5

1

2

3

4

5



REV.:	DATE:	DESCRIPTION:	DRAWN BY:	CHECKED BY:	APPROVED BY:
A	4/6/16	ISSUE TO CLIENT	SH	AC	EP



CASSADAGA WIND EMF STUDY  
APPLIED HIGH VOLTAGE

PROPOSED 115KV LAYOUT  
CLOSEST RESIDENTIAL CLEARANCES

PLOT SCALE:		
ARCH	0	1 2
ENGRG	0	1 2
PROJ. NO.:	SCALE:	
AHV-15-002	NONE	
DWG. NO.:	SHEET:	REV.:
SK1	12	A

A

B

C

D

E

F

G