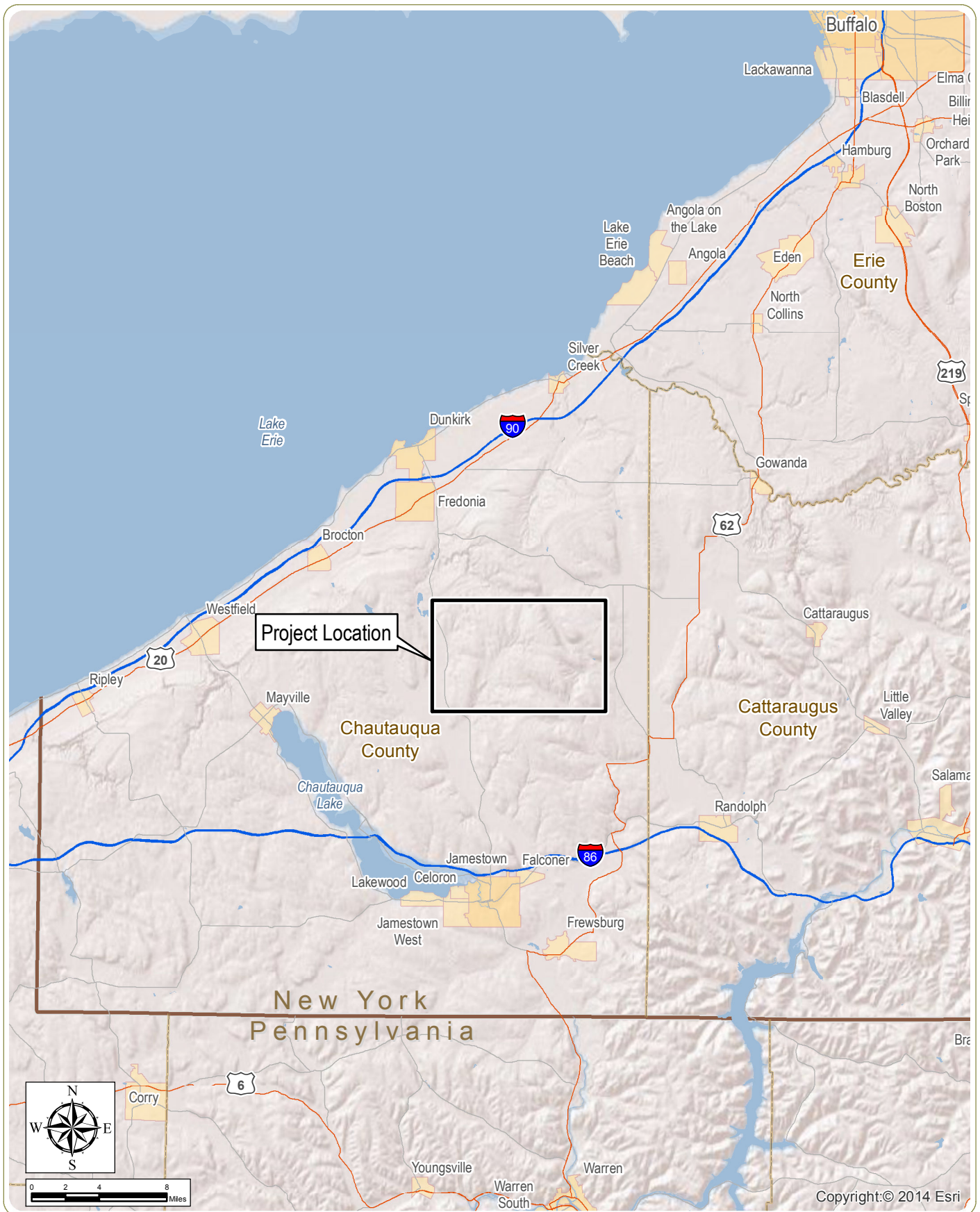


Figures



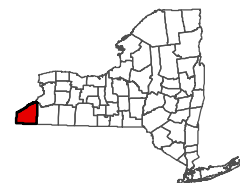
Cassadaga Wind Project

Towns of Arkwright, Charlotte, Cherry Creek, and Stockton - Chautauqua County, New York

Figure 1: Regional Project Location

March 2016

- Notes:** 1. Basemap: ESRI ArcGIS Online "World Shaded Relief" Map Service and ESRI StreetMap North America, 2008.
 2. This is a color graphic. Reproduction in grayscale may misrepresent the data.

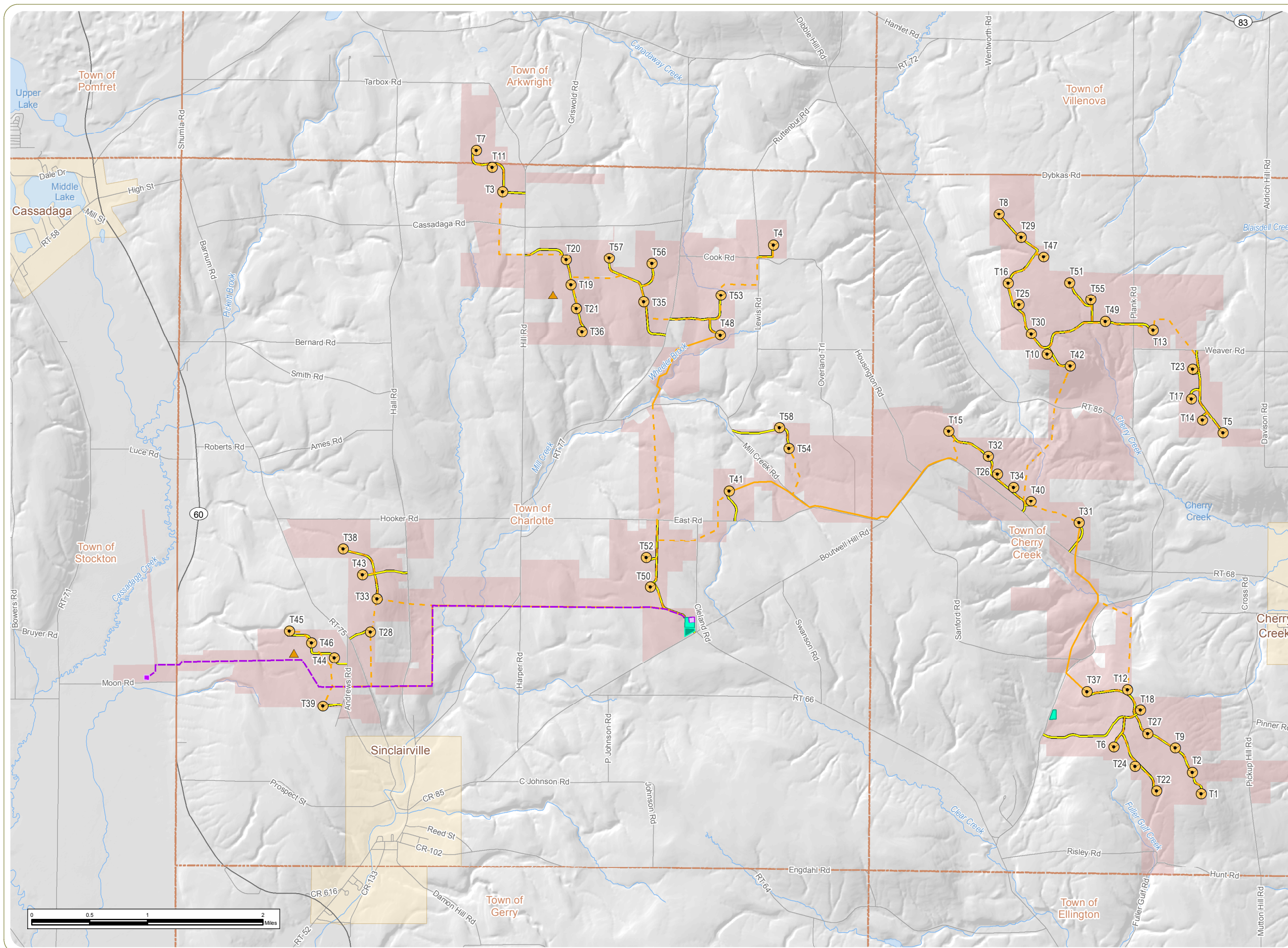


Cassadaga Wind Project

Towns of Charlotte, Cherry Creek, Arkwright, and Stockton
Chautauqua County, New York

Figure 2: Proposed Project Layout

March 2016

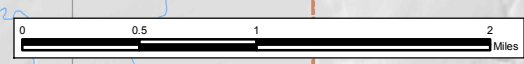


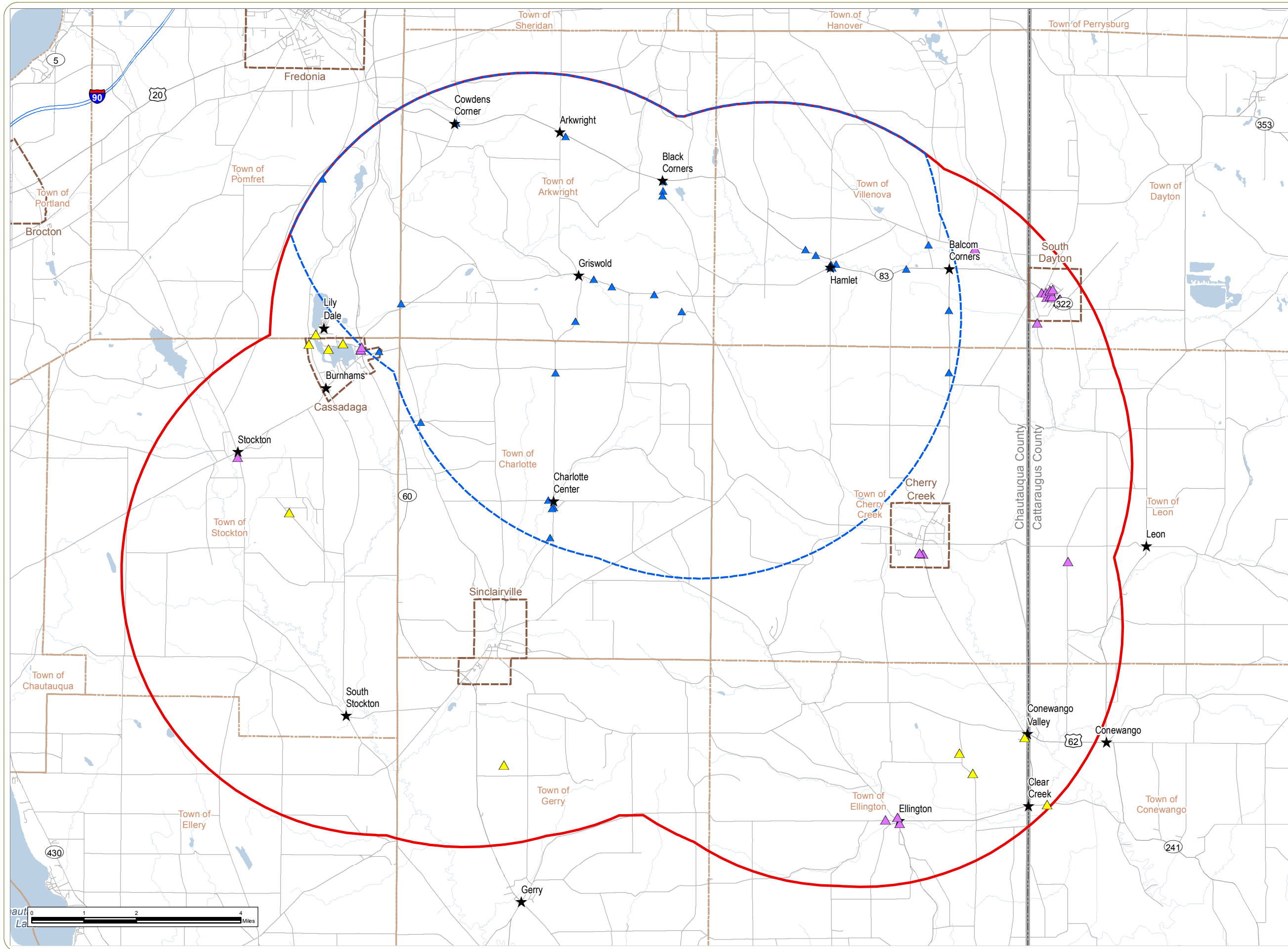
- Wind Turbine
- Met Tower
- Overhead Transmission Line
- Overhead Collection Line
- Underground Collection Line
- Access Road
- POI Substation
- Collector Substation
- O&M Building
- Laydown Area
- Project Site
- Town Boundary

Notes:
 1. Basemap: Hillshade derived from USGS 10-meter DEM data and ESRI StreetMap North America, 2008.
 2. This is a color graphic. Reproduction in grayscale may misrepresent the data.



www.edrdpc.com





Cassadaga Wind Project

Towns of Charlotte, Cherry Creek, Arkwright, and Stockton - Chautauqua County, New York

Figure 3: Previously Identified Historic Resources

March 2016

Historic Resources

- Previously Determined NRHP-Eligible
- Previously Determined NRHP-Undetermined
- Previously Determined NRHP-Eligible (Arkwright Summit Wind Farm)
- Arkwright Summit Wind Farm Study Area (2009)
- Hamlet
- 5-Mile Study Area
- City/Village Boundary
- Town Boundary
- County Boundary

Notes:
 1. Basemap: ESRI StreetMap North America, 2008.
 2. This is a color graphic. Reproduction in grayscale may misrepresent the data.



www.edrdpc.com

Notes:

1. Potential turbine visibility based on viewshed results for the maximum blade tip height of 152 meters (499 feet). The analysis accounts for screening by topography and mapped forest vegetation with an assumed height of 40 feet.
2. The Area of Potential Effect (APE) for Visual Effects was determined by viewshed analysis based on the maximum blade tip height of 152 meters considering the screening effects of topography only. This analysis does not take into account potential screening by forest vegetation, individual trees, existing buildings, or any other potential obstruction, and therefore represents a conservative (i.e., "worst case") scenario.
3. Basemap: ESRI StreetMap North America, 2008.
4. This is a color graphic. Reproduction in grayscale may misrepresent the data.

Cassadaga Wind Project

Towns of Charlotte, Cherry Creek, Arkwright, and Stockton - Chautauqua County, New York

Figure 4: Historic Resources Survey Results

Index Sheet

March 2016

Historic Resources

- EDR Recommended NRHP-Eligible
- EDR Recommended Not Eligible
- Previously Determined NRHP-Eligible (Arkwright Summit Wind Farm)
- Arkwright Summit Wind Farm Study Area (2009)

Viewshed Analysis

- 1-12 Turbines Visible
- 13-24 Turbines Visible
- 25-36 Turbines Visible
- 37-48 Turbines Visible
- 48-58 Turbines Visible

★ Hamlet

□ APE for Visual Effects

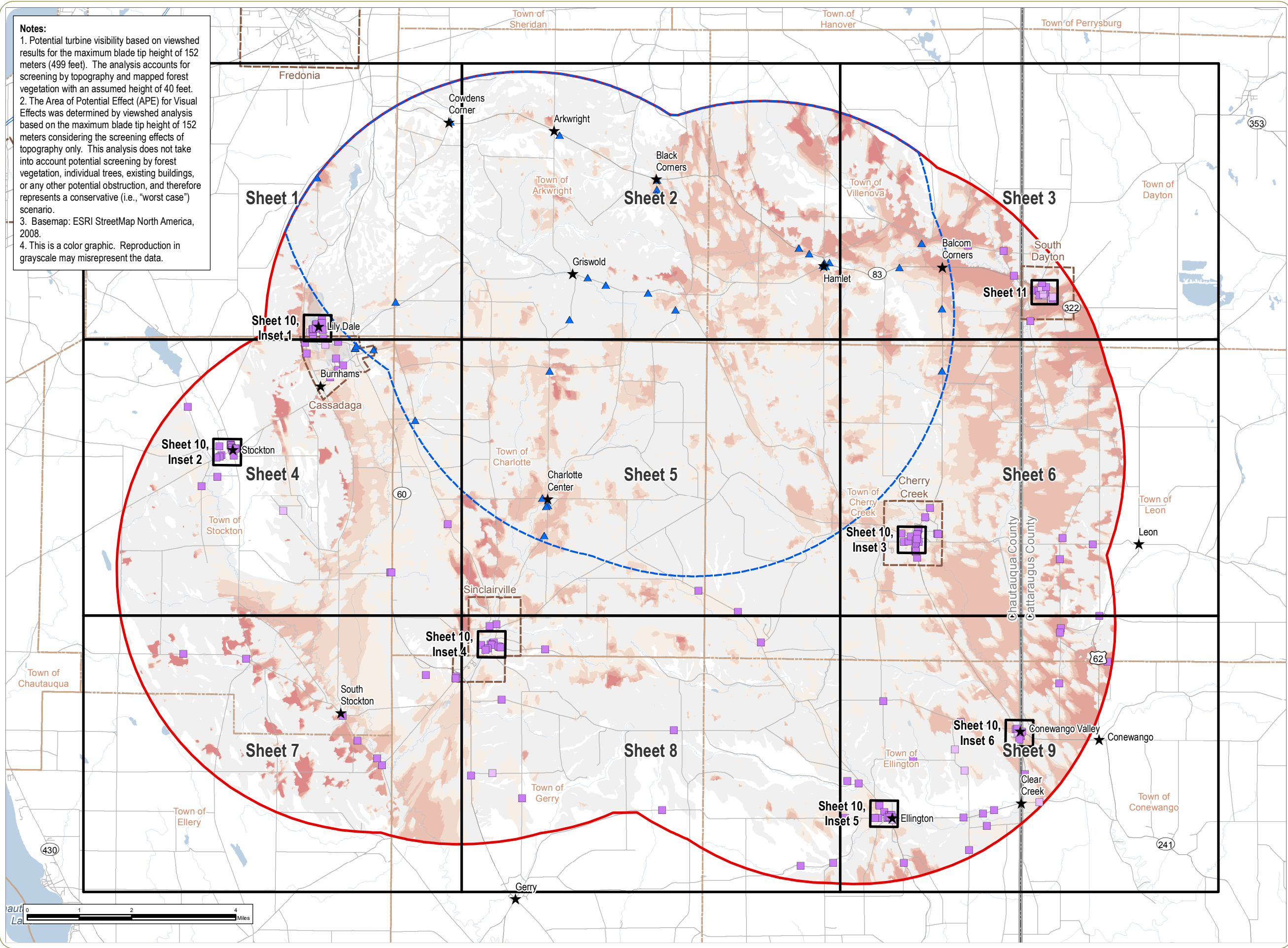
□ Sheet Index

□ 5-Mile Study Area

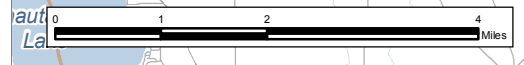
□ City/Village Boundary

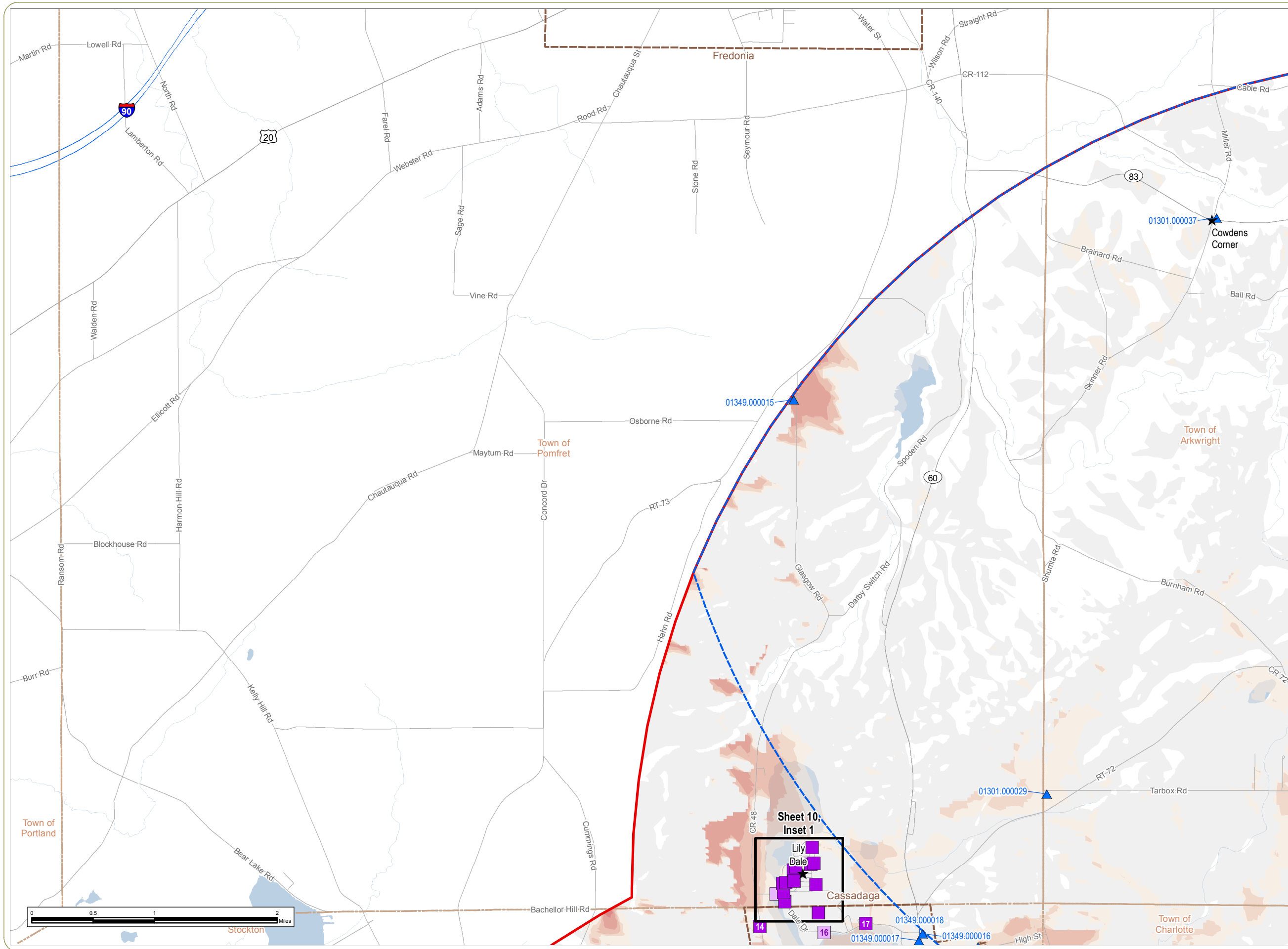
□ Town Boundary

□ County Boundary



www.edrdpc.com





Cassadaga Wind Project

Towns of Charlotte, Cherry Creek, Arkwright, and Stockton - Chautauqua County, New York

Figure 4: Historic Resources Survey Results

Sheet 1 of 11

March 2016

Historic Resources

- EDR Recommended NRHP-Eligible
- EDR Recommended Not Eligible
- ▲ Previously Determined NRHP-Eligible (Arkwright Summit Wind Farm)
- Arkwright Summit Wind Farm Study Area (2009)

Viewshed Analysis

- 1-12 Turbines Visible
- 13-24 Turbines Visible
- 25-36 Turbines Visible
- 37-48 Turbines Visible
- 48-58 Turbines Visible

- ★ Hamlet
- APE for Visual Effects
- 5-Mile Study Area
- City/Village Boundary
- Town Boundary
- County Boundary

Notes:

1. Please refer to the notes presented on the Figure 4 Index Sheet.
2. This is a color graphic. Reproduction in grayscale may misrepresent the data.



www.edrdpc.com

Sheet 10, Inset 1

Lily Dale
Cassadaga

14 15 16 17 18

01349.000017 01349.000018 01349.000016

Cassadaga Wind Project

Towns of Charlotte, Cherry Creek, Arkwright, and Stockton - Chautauqua County, New York

Figure 4: Historic Resources Survey Results

Sheet 2 of 11

March 2016

Historic Resources

- EDR Recommended NRHP-Eligible
- EDR Recommended Not Eligible
- Previously Determined NRHP-Eligible (Arkwright Summit Wind Farm)
- Arkwright Summit Wind Farm Study Area (2009)

Viewshed Analysis

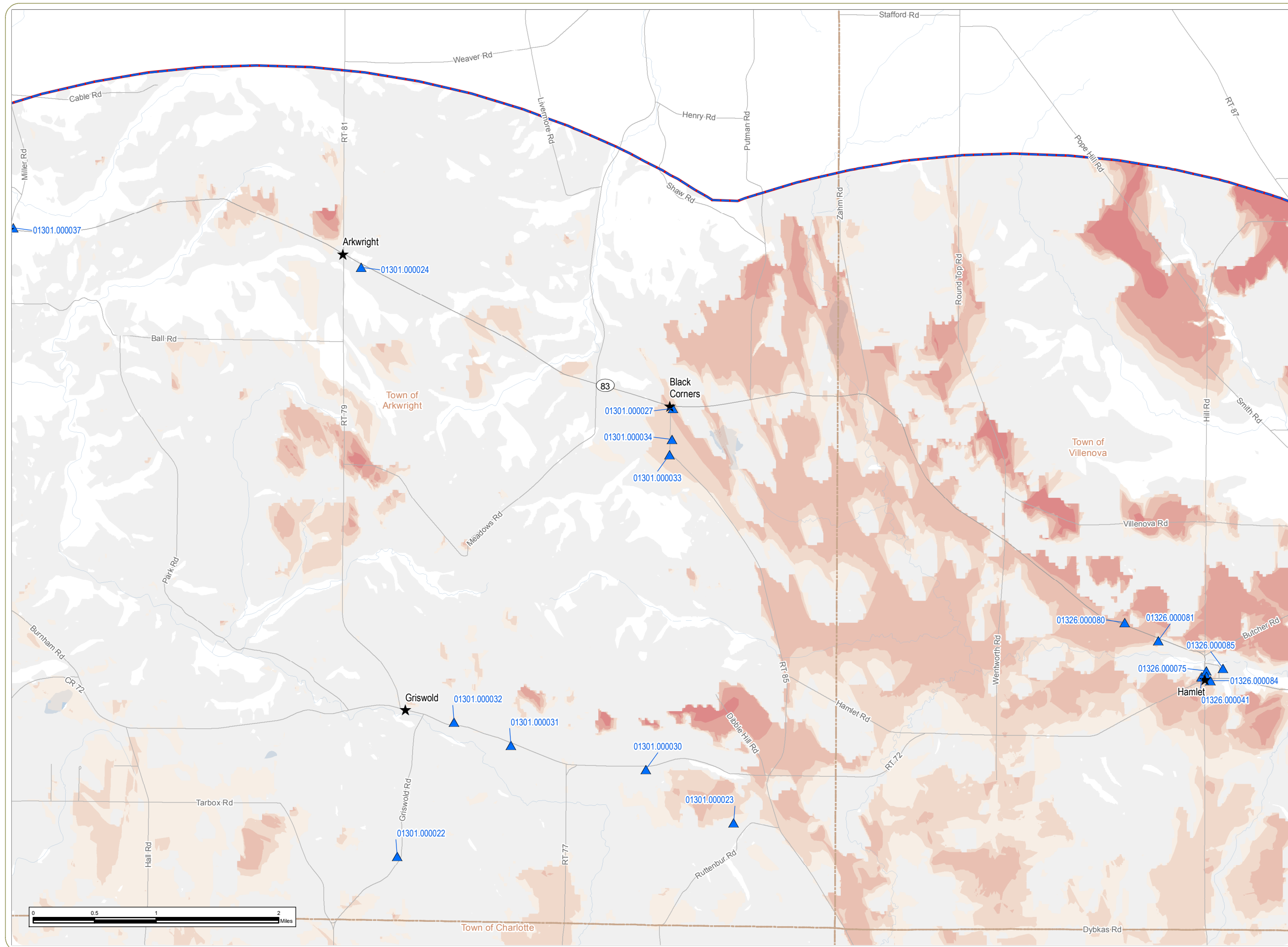
- 1-12 Turbines Visible
- 13-24 Turbines Visible
- 25-36 Turbines Visible
- 37-48 Turbines Visible
- 48-58 Turbines Visible

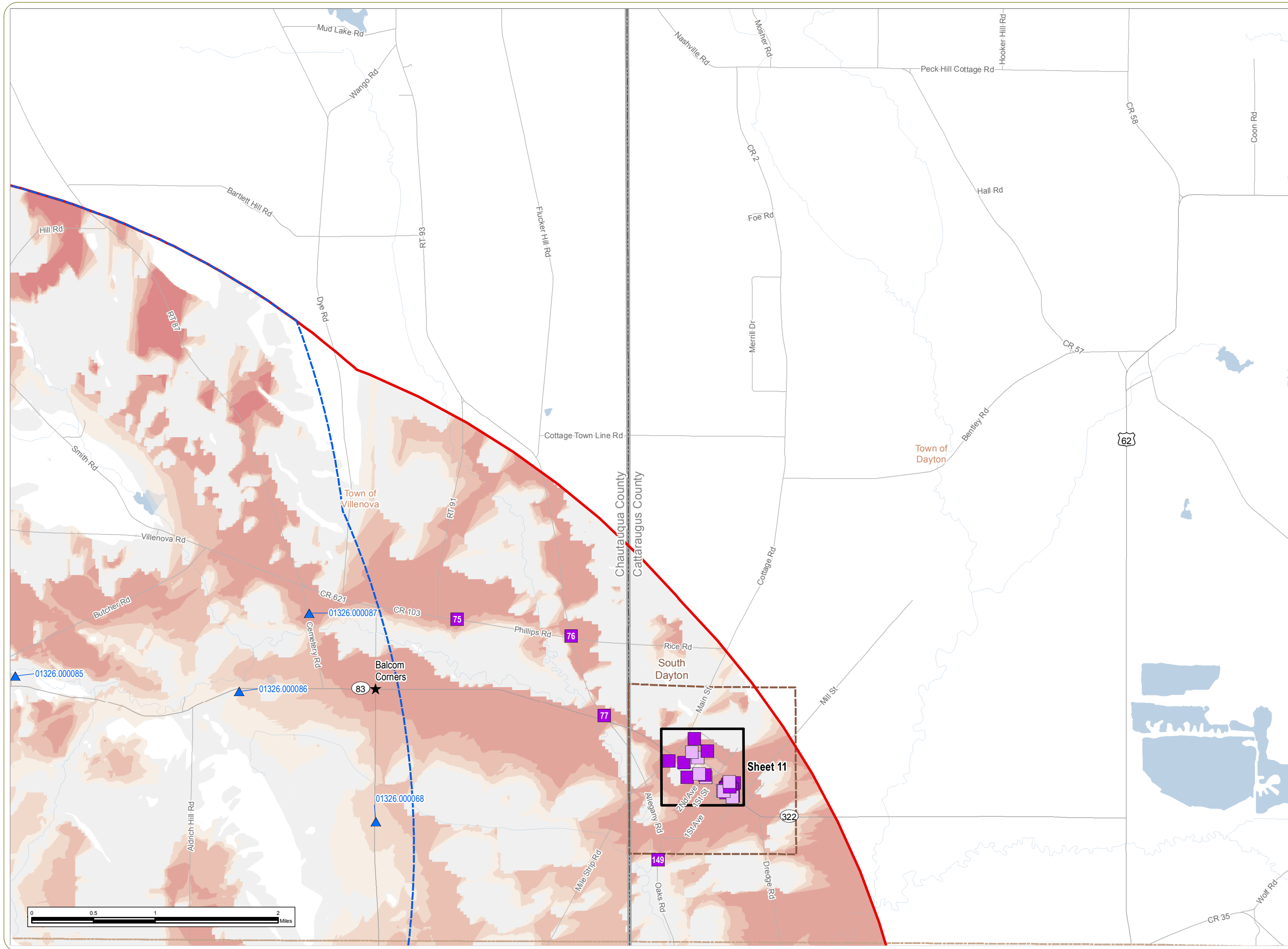
- Hamlet
- APE for Visual Effects
- 5-Mile Study Area
- City/Village Boundary
- Town Boundary
- County Boundary

Notes:
 1. Please refer to the notes presented on the Figure 4 Index Sheet.
 2. This is a color graphic. Reproduction in grayscale may misrepresent the data.



www.edrdpc.com





Cassadaga Wind Project

Towns of Charlotte, Cherry Creek, Arkwright, and Stockton - Chautauqua County, New York

Figure 4: Historic Resources Survey Results

Sheet 3 of 11

March 2016

Historic Resources

- EDR Recommended NRHP-Eligible
- EDR Recommended Not Eligible
- Previously Determined NRHP-Eligible (Arkwright Summit Wind Farm)
- Arkwright Summit Wind Farm Study Area (2009)

Viewshed Analysis

- 1-12 Turbines Visible
- 13-24 Turbines Visible
- 25-36 Turbines Visible
- 37-48 Turbines Visible
- 48-58 Turbines Visible

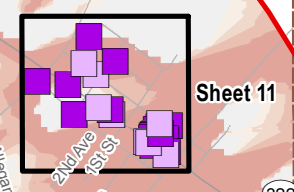
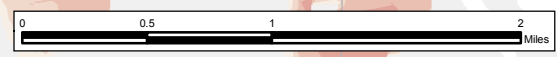
Other Symbols

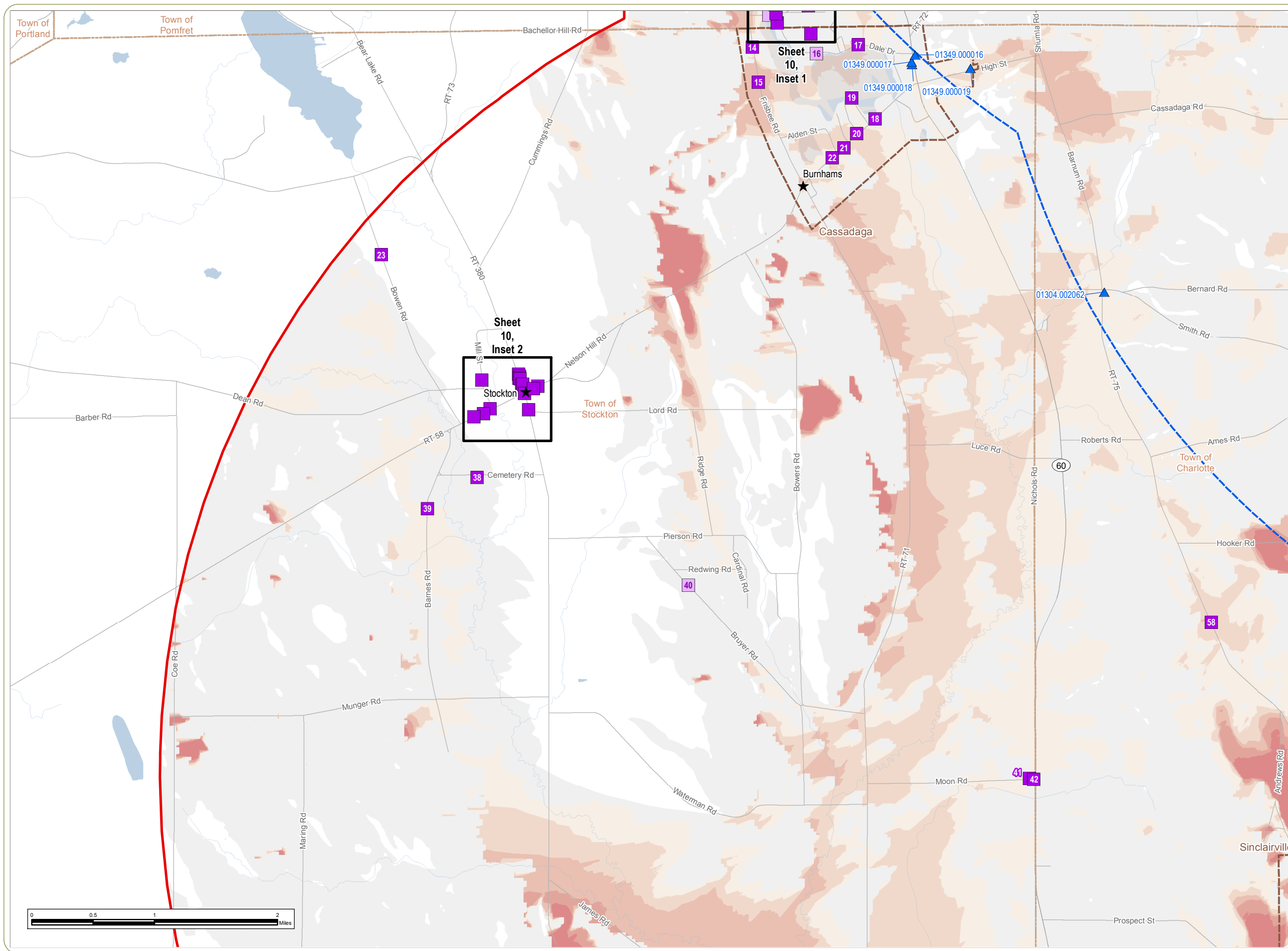
- Hamlet
- APE for Visual Effects
- 5-Mile Study Area
- City/Village Boundary
- Town Boundary
- County Boundary

Notes:
 1. Please refer to the notes presented on the Figure 4 Index Sheet.
 2. This is a color graphic. Reproduction in grayscale may misrepresent the data.



www.edrdpc.com





Cassadaga Wind Project

Towns of Charlotte, Cherry Creek, Arkwright, and Stockton - Chautauqua County, New York

Figure 4: Historic Resources Survey Results

Sheet 4 of 11

March 2016

Historic Resources

- EDR Recommended NRHP-Eligible
- EDR Recommended Not Eligible
- Previously Determined NRHP-Eligible (Arkwright Summit Wind Farm)
- Arkwright Summit Wind Farm Study Area (2009)

Viewshed Analysis

- 1-12 Turbines Visible
- 13-24 Turbines Visible
- 25-36 Turbines Visible
- 37-48 Turbines Visible
- 48-58 Turbines Visible

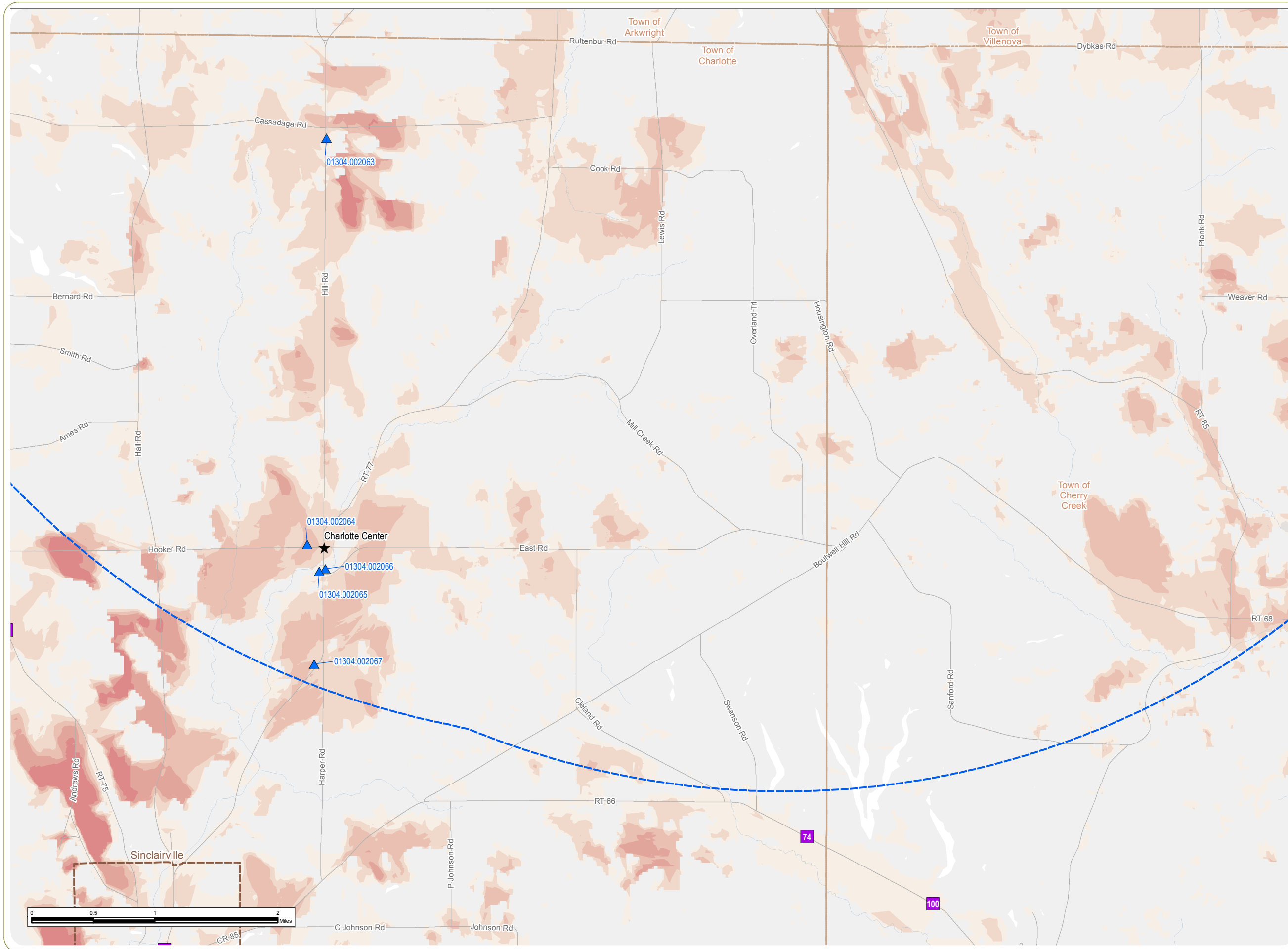
Other Symbols:

- Hamlet
- APE for Visual Effects
- 5-Mile Study Area
- City/Village Boundary
- Town Boundary
- County Boundary

Notes:
 1. Please refer to the notes presented on the Figure 4 Index Sheet.
 2. This is a color graphic. Reproduction in grayscale may misrepresent the data.



www.edrdpc.com



Cassadaga Wind Project

Towns of Charlotte, Cherry Creek, Arkwright, and Stockton - Chautauqua County, New York

Figure 4: Historic Resources Survey Results

Sheet 5 of 11

March 2016

Historic Resources

- EDR Recommended NRHP-Eligible
- EDR Recommended Not Eligible
- ▲ Previously Determined NRHP-Eligible (Arkwright Summit Wind Farm)
- Arkwright Summit Wind Farm Study Area (2009)

Viewshed Analysis

- 1-12 Turbines Visible
- 13-24 Turbines Visible
- 25-36 Turbines Visible
- 37-48 Turbines Visible
- 48-58 Turbines Visible

- ★ Hamlet
- APE for Visual Effects
- 5-Mile Study Area
- City/Village Boundary
- Town Boundary
- County Boundary

Notes:

1. Please refer to the notes presented on the Figure 4 Index Sheet.
2. This is a color graphic. Reproduction in grayscale may misrepresent the data.



www.edrdpc.com

Cassadaga Wind Project

Towns of Charlotte, Cherry Creek, Arkwright, and Stockton - Chautauqua County, New York

Figure 4: Historic Resources Survey Results

Sheet 6 of 11

March 2016

Historic Resources

- EDR Recommended NRHP-Eligible
- EDR Recommended Not Eligible
- ▲ Previously Determined NRHP-Eligible (Arkwright Summit Wind Farm)
- Arkwright Summit Wind Farm Study Area (2009)

Viewshed Analysis

- 1-12 Turbines Visible
- 13-24 Turbines Visible
- 25-36 Turbines Visible
- 37-48 Turbines Visible
- 48-58 Turbines Visible

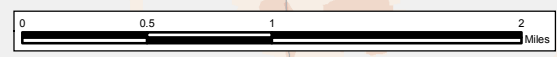
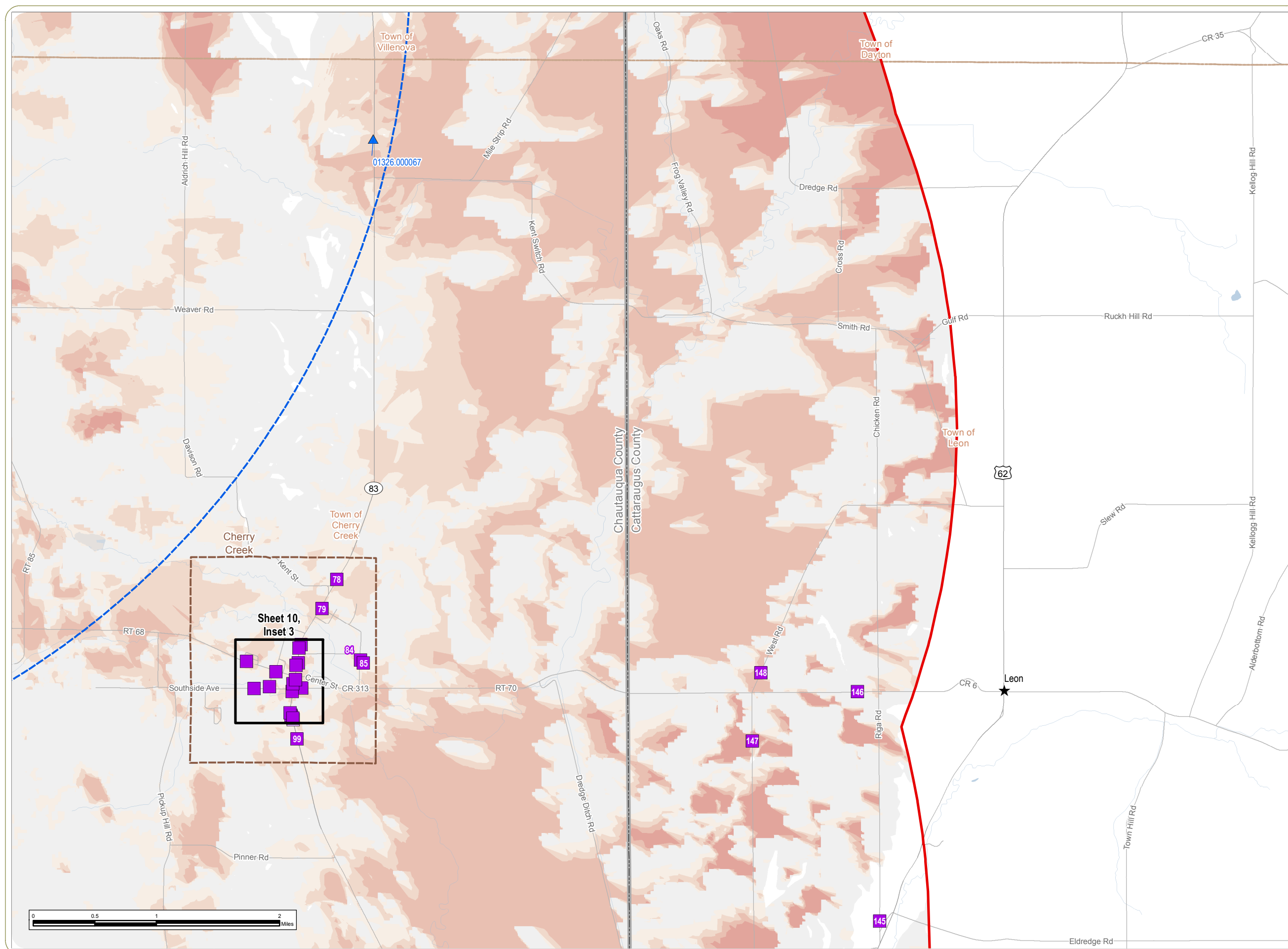
- ★ Hamlet
- APE for Visual Effects
- 5-Mile Study Area
- City/Village Boundary
- Town Boundary
- County Boundary

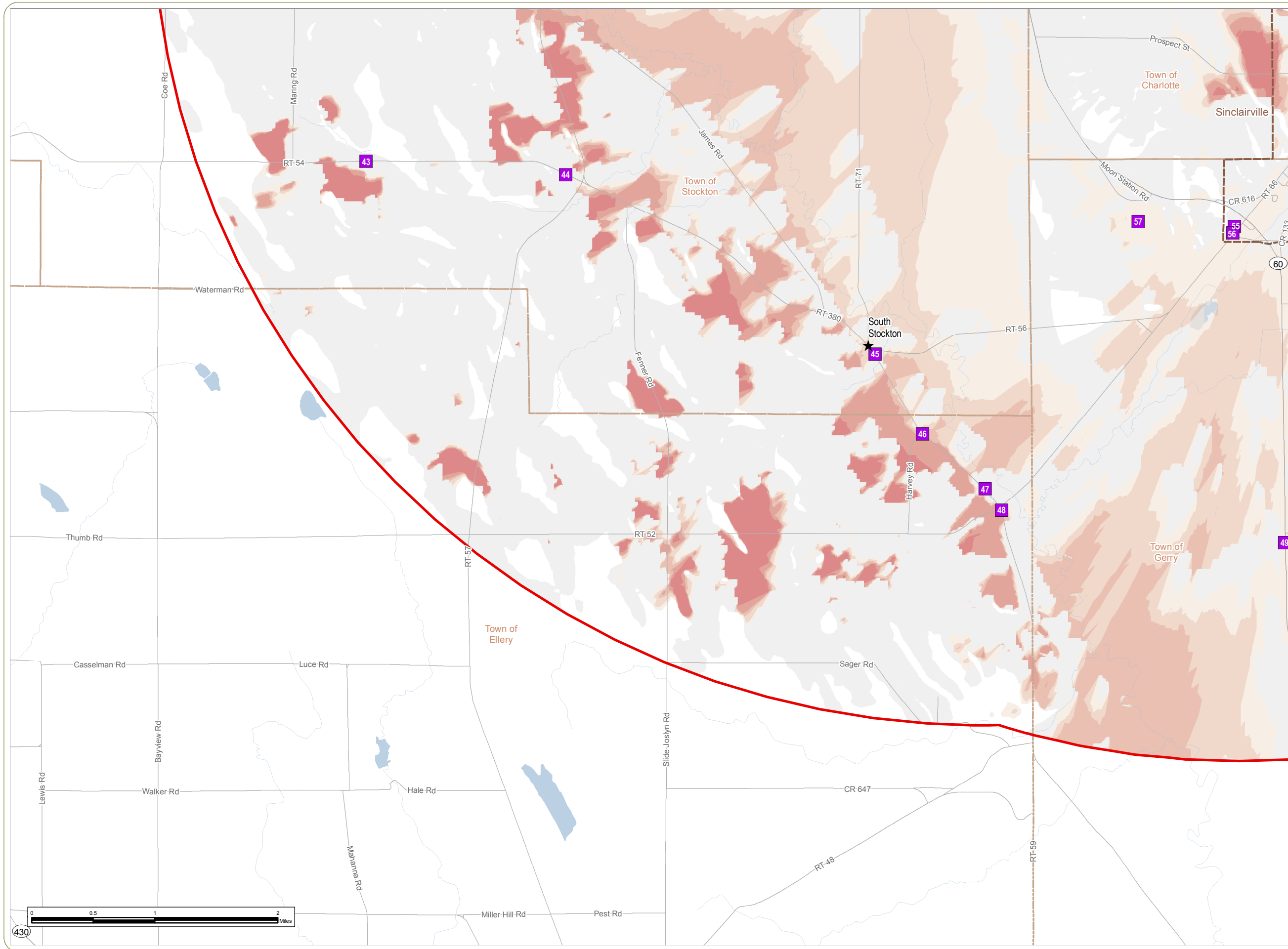
Notes:

1. Please refer to the notes presented on the Figure 4 Index Sheet.
2. This is a color graphic. Reproduction in grayscale may misrepresent the data.



www.edrdpc.com





Cassadaga Wind Project

Towns of Charlotte, Cherry Creek, Arkwright, and Stockton - Chautauqua County, New York

Figure 4: Historic Resources Survey Results

Sheet 7 of 11

March 2016

Historic Resources

- EDR Recommended NRHP-Eligible
- EDR Recommended Not Eligible
- ▲ Previously Determined NRHP-Eligible (Arkwright Summit Wind Farm)
- Arkwright Summit Wind Farm Study Area (2009)

Viewshed Analysis

- 1-12 Turbines Visible
- 13-24 Turbines Visible
- 25-36 Turbines Visible
- 37-48 Turbines Visible
- 48-58 Turbines Visible

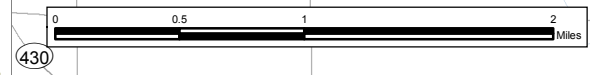
Other Symbols

- ★ Hamlet
- APE for Visual Effects
- 5-Mile Study Area
- City/Village Boundary
- Town Boundary
- County Boundary

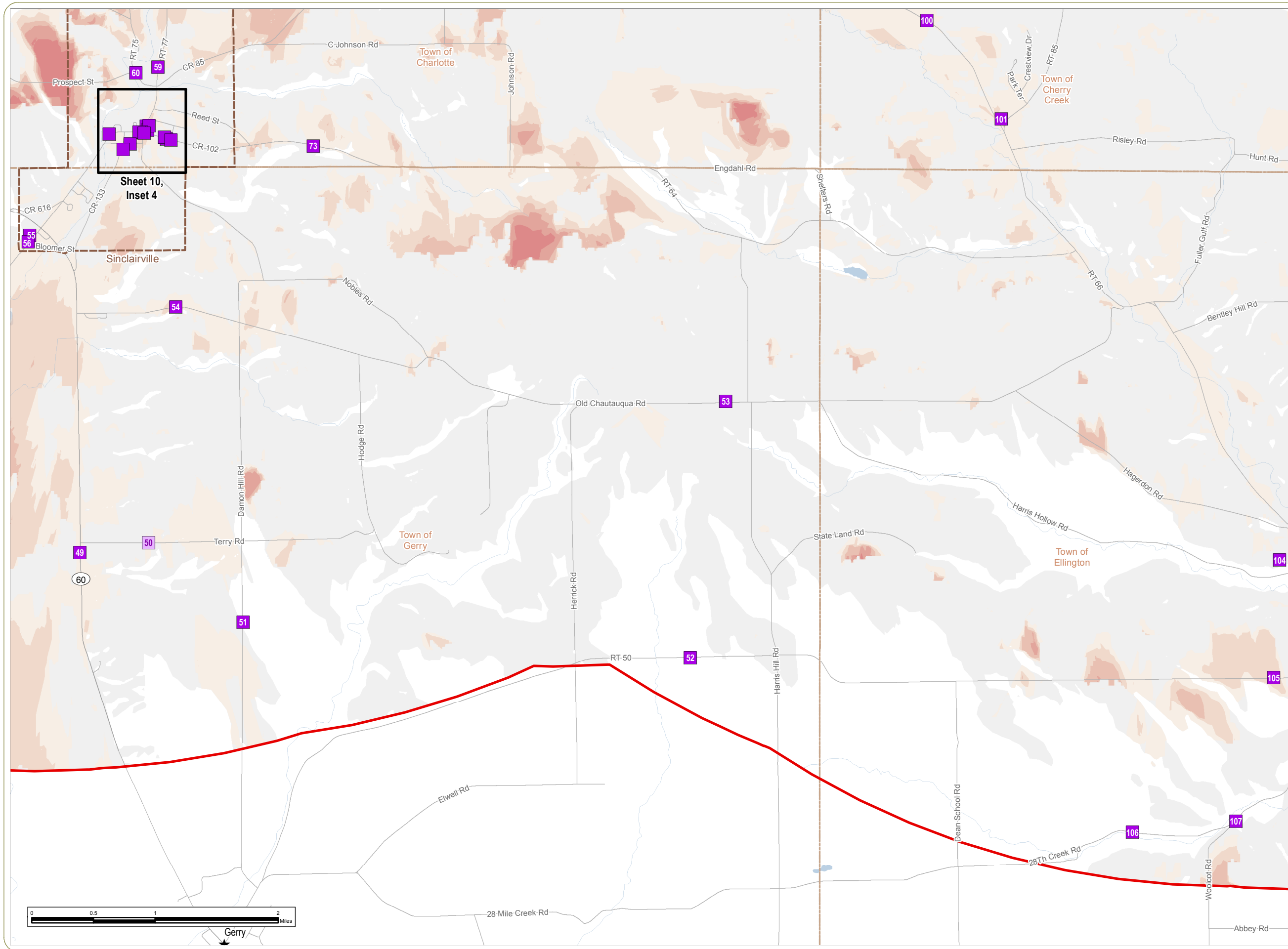
Notes:
 1. Please refer to the notes presented on the Figure 4 Index Sheet.
 2. This is a color graphic. Reproduction in grayscale may misrepresent the data.



www.edrdpc.com



430



Cassadaga Wind Project

Towns of Charlotte, Cherry Creek, Arkwright, and Stockton - Chautauqua County, New York

Figure 4: Historic Resources Survey Results

Sheet 8 of 11

March 2016

Historic Resources

- EDR Recommended NRHP-Eligible
- EDR Recommended Not Eligible
- ▲ Previously Determined NRHP-Eligible (Arkwright Summit Wind Farm)
- Arkwright Summit Wind Farm Study Area (2009)

Viewshed Analysis

- 1-12 Turbines Visible
- 13-24 Turbines Visible
- 25-36 Turbines Visible
- 37-48 Turbines Visible
- 48-58 Turbines Visible

- ★ Hamlet
- APE for Visual Effects
- 5-Mile Study Area
- City/Village Boundary
- Town Boundary
- County Boundary

Notes:

1. Please refer to the notes presented on the Figure 4 Index Sheet.
2. This is a color graphic. Reproduction in grayscale may misrepresent the data.



www.edrdpc.com

Cassadaga Wind Project

Towns of Charlotte, Cherry Creek, Arkwright, and Stockton - Chautauqua County, New York

Figure 4: Historic Resources Survey Results

Sheet 9 of 11

March 2016

Historic Resources

- EDR Recommended NRHP-Eligible
- EDR Recommended Not Eligible
- Previously Determined NRHP-Eligible (Arkwright Summit Wind Farm)
- Arkwright Summit Wind Farm Study Area (2009)

Viewshed Analysis

- 1-12 Turbines Visible
- 13-24 Turbines Visible
- 25-36 Turbines Visible
- 37-48 Turbines Visible
- 48-58 Turbines Visible

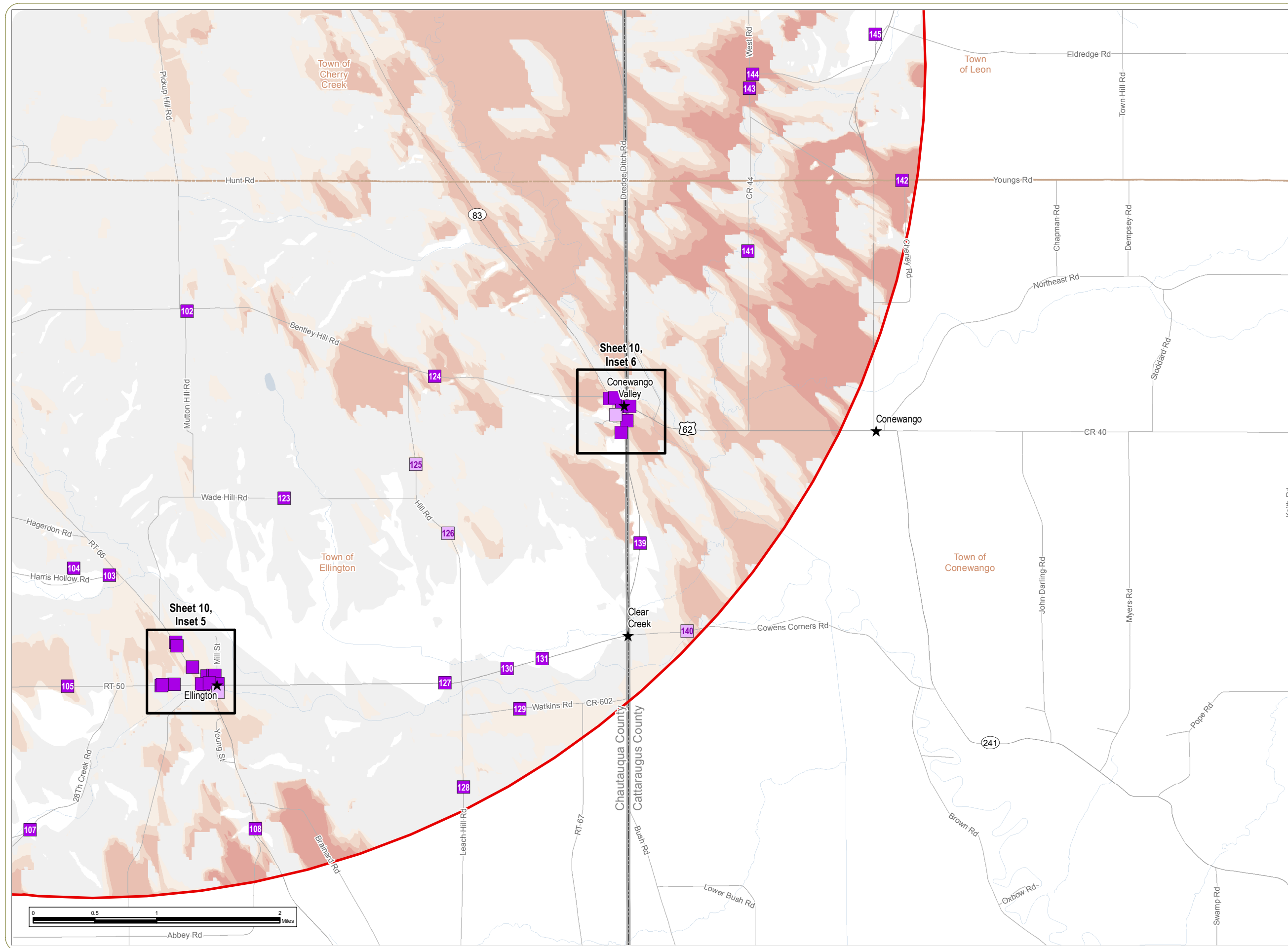
- Hamlet
- APE for Visual Effects
- 5-Mile Study Area
- City/Village Boundary
- Town Boundary
- County Boundary

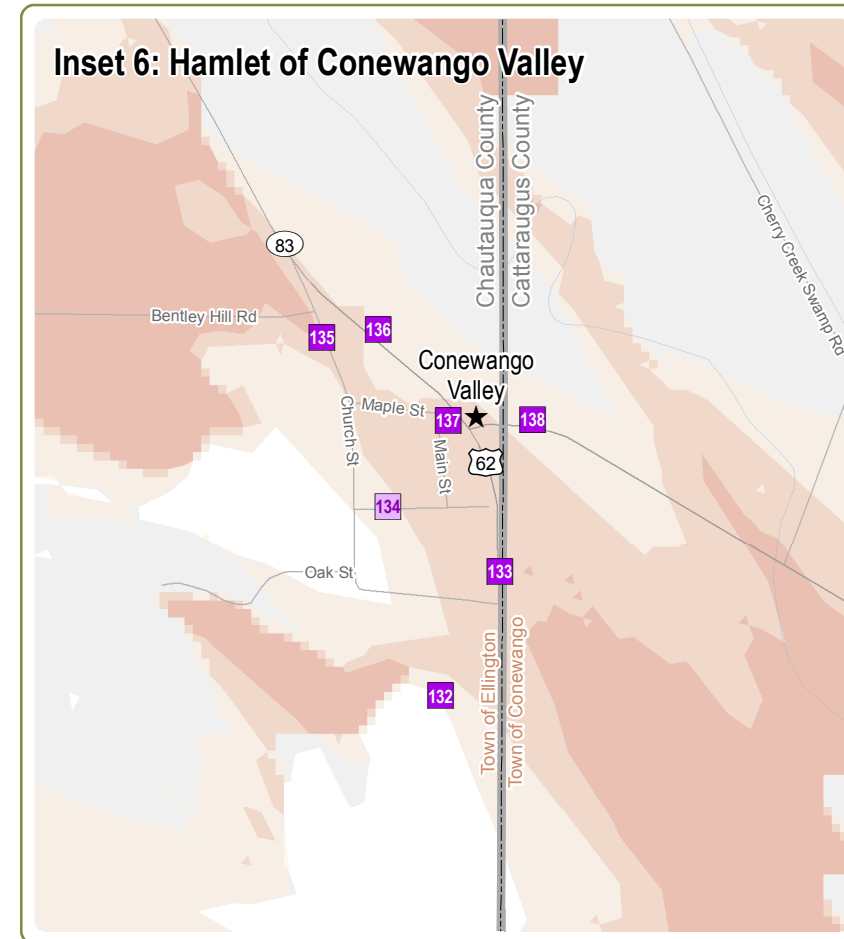
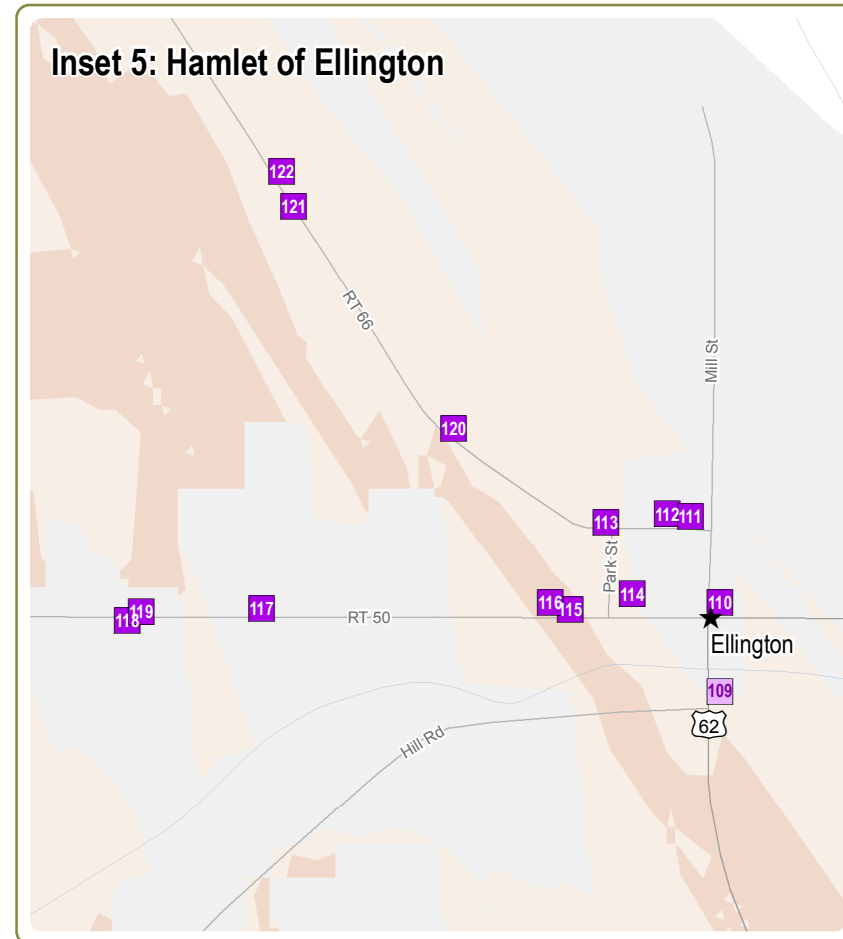
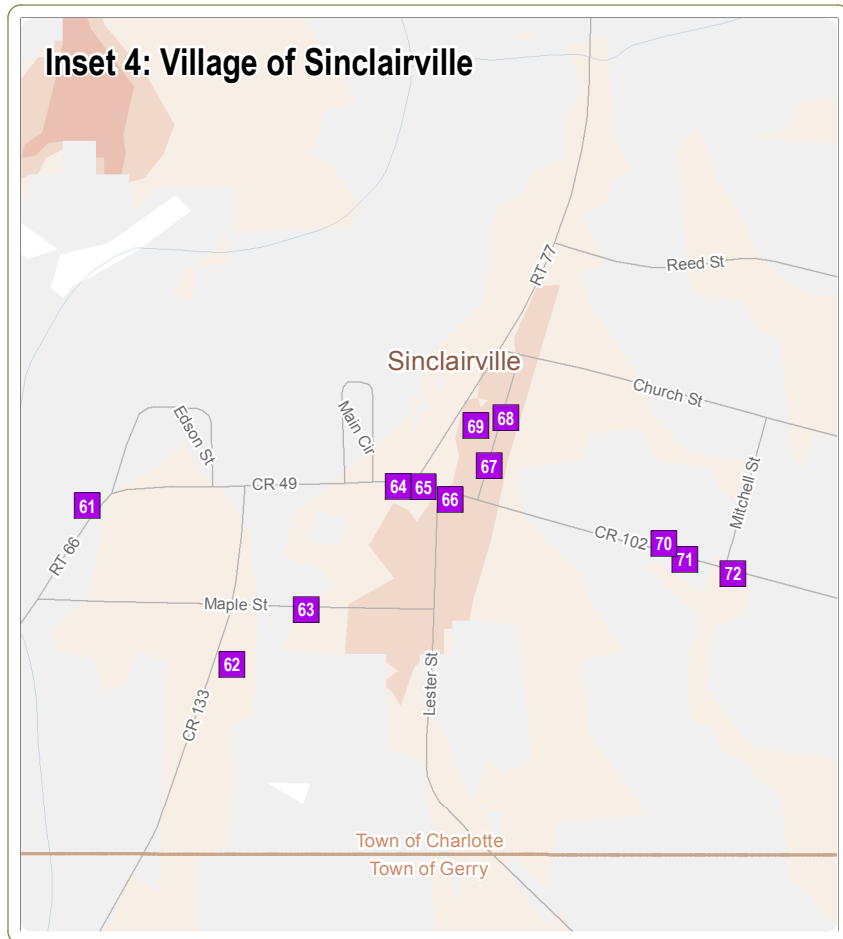
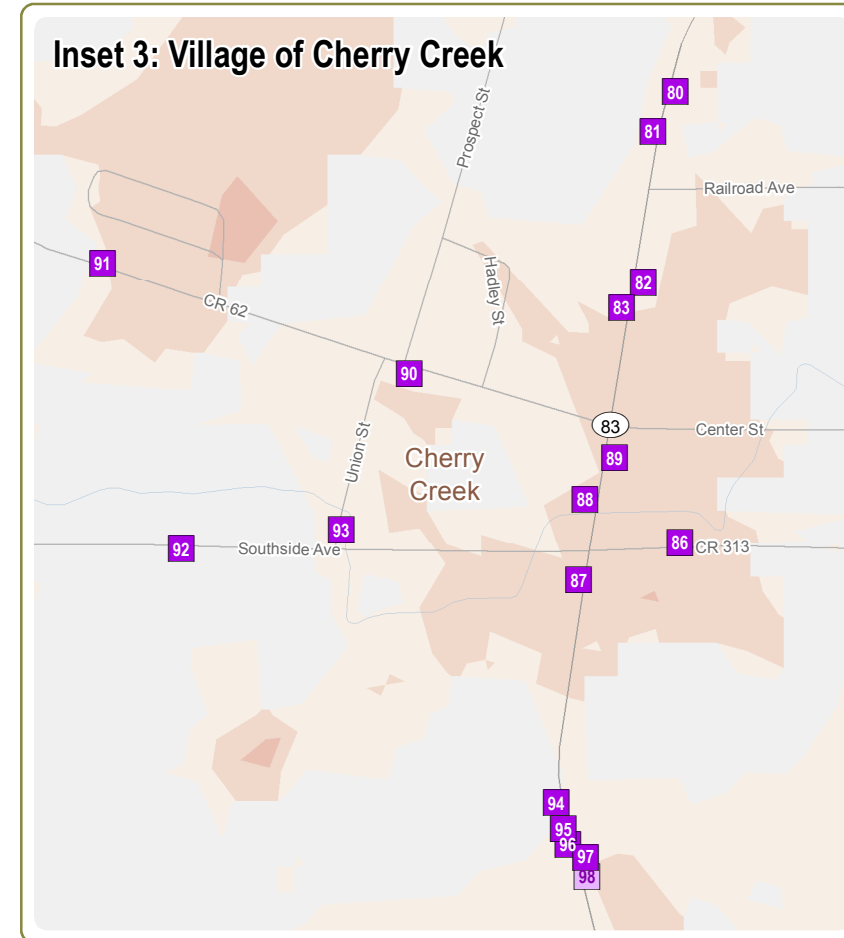
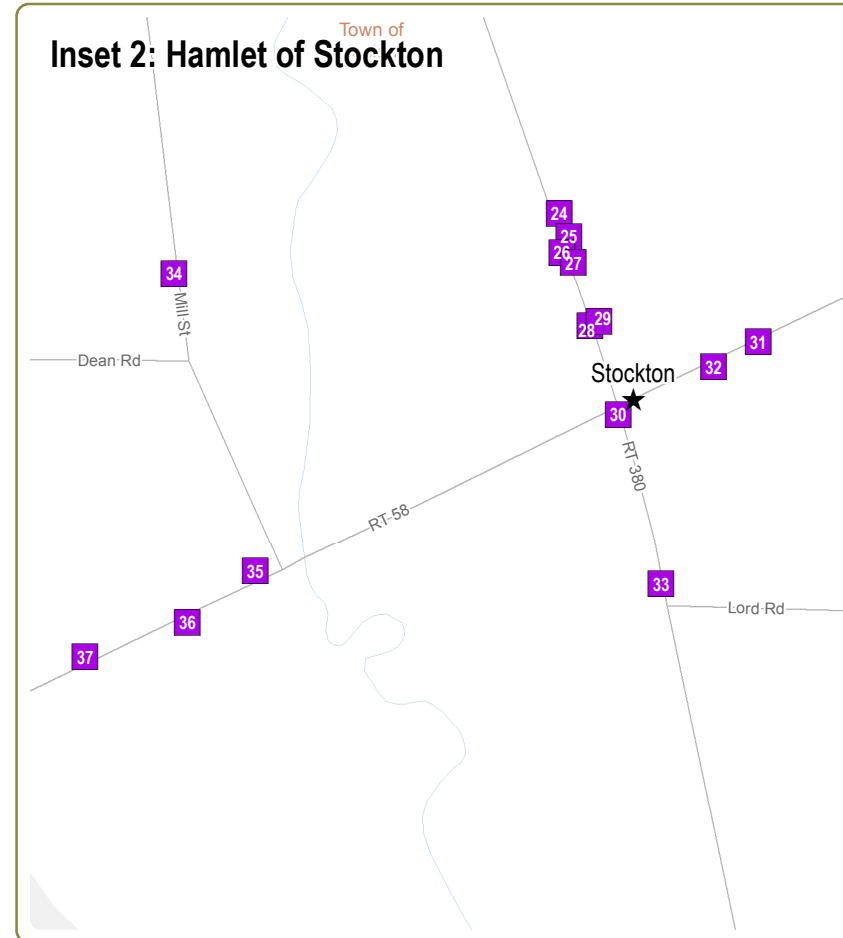
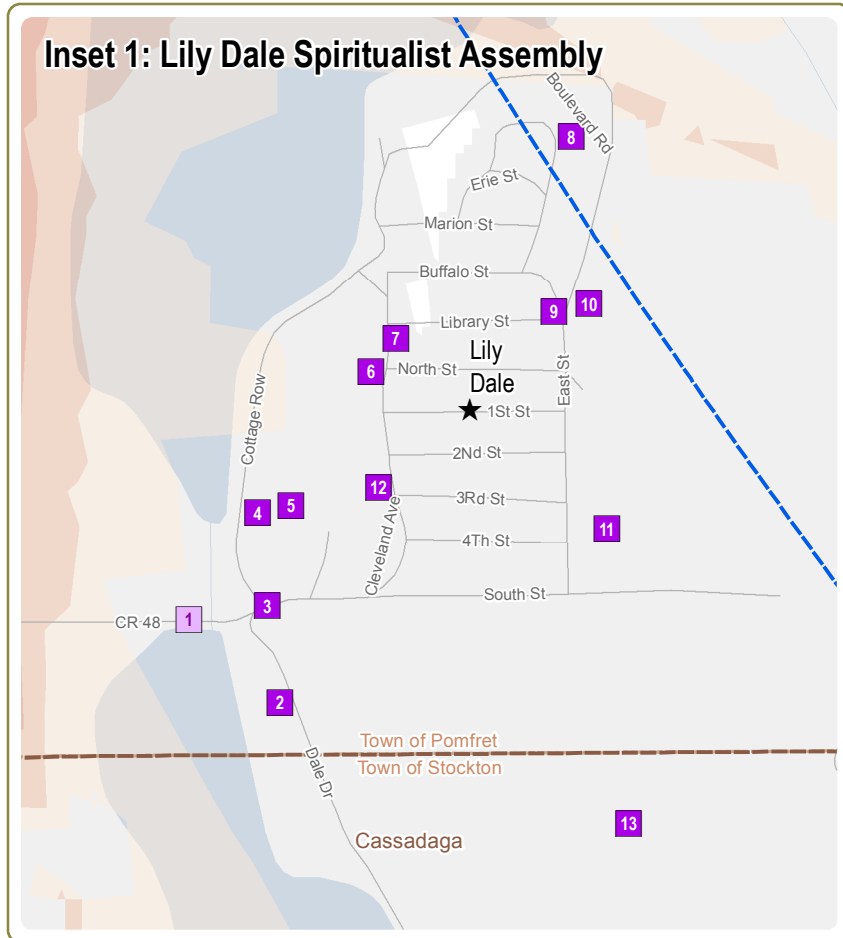
Notes:

1. Please refer to the notes presented on the Figure 4 Index Sheet.
2. This is a color graphic. Reproduction in grayscale may misrepresent the data.



www.edrdpc.com





Cassadaga Wind Project

Towns of Charlotte, Cherry Creek, Arkwright, and Stockton - Chautauqua County, New York

Figure 4: Historic Resources Survey Results

Sheet 10 of 11

March 2016

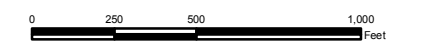
Historic Resources

- EDR Recommended NRHP-Eligible
- EDR Recommended Not Eligible
- Previously Determined NRHP-Eligible (Arkwright Summit Wind Farm)
- Arkwright Summit Wind Farm Study Area (2009)

Viewshed Analysis

- 1-12 Turbines Visible
- 13-24 Turbines Visible
- 25-36 Turbines Visible
- 37-48 Turbines Visible
- 48-58 Turbines Visible

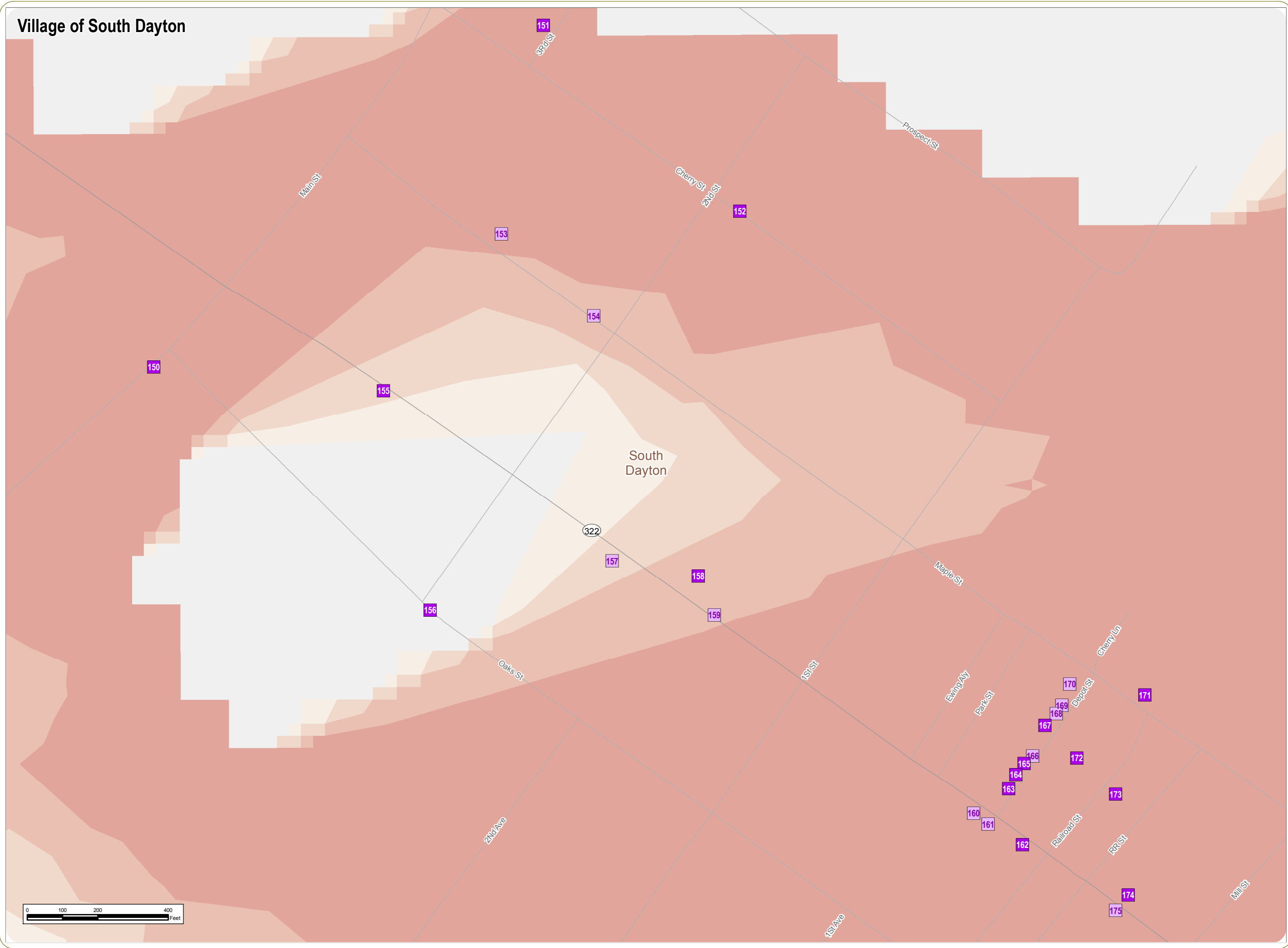
- Hamlet
- APE for Visual Effects
- 5-Mile Study Area
- City/Village Boundary
- Town Boundary
- County Boundary



Notes:
 1. Please refer to the notes presented on the Figure 4 Index Sheet.
 2. This is a color graphic. Reproduction in grayscale may misrepresent the data.



Village of South Dayton



Cassadaga Wind Project

Towns of Charlotte, Cherry Creek, Arkwright, and Stockton - Chautauqua County, New York

Figure 4: Historic Resources Survey Results

Sheet 11 of 11

March 2016

Historic Resources

- EDR Recommended NRHP-Eligible
- EDR Recommended Not Eligible
- ▲ Previously Determined NRHP-Eligible (Arkwright Summit Wind Farm)
- Arkwright Summit Wind Farm Study Area (2009)

Viewshed Analysis

- 1-12 Turbines Visible
- 13-24 Turbines Visible
- 25-36 Turbines Visible
- 37-48 Turbines Visible
- 48-58 Turbines Visible

- ★ Hamlet
- APE for Visual Effects
- 5-Mile Study Area
- City/Village Boundary
- Town Boundary
- County Boundary

Notes:
 1. Please refer to the notes presented on the Figure 4 Index Sheet.
 2. This is a color graphic. Reproduction in grayscale may misrepresent the data.



www.edrdpc.com