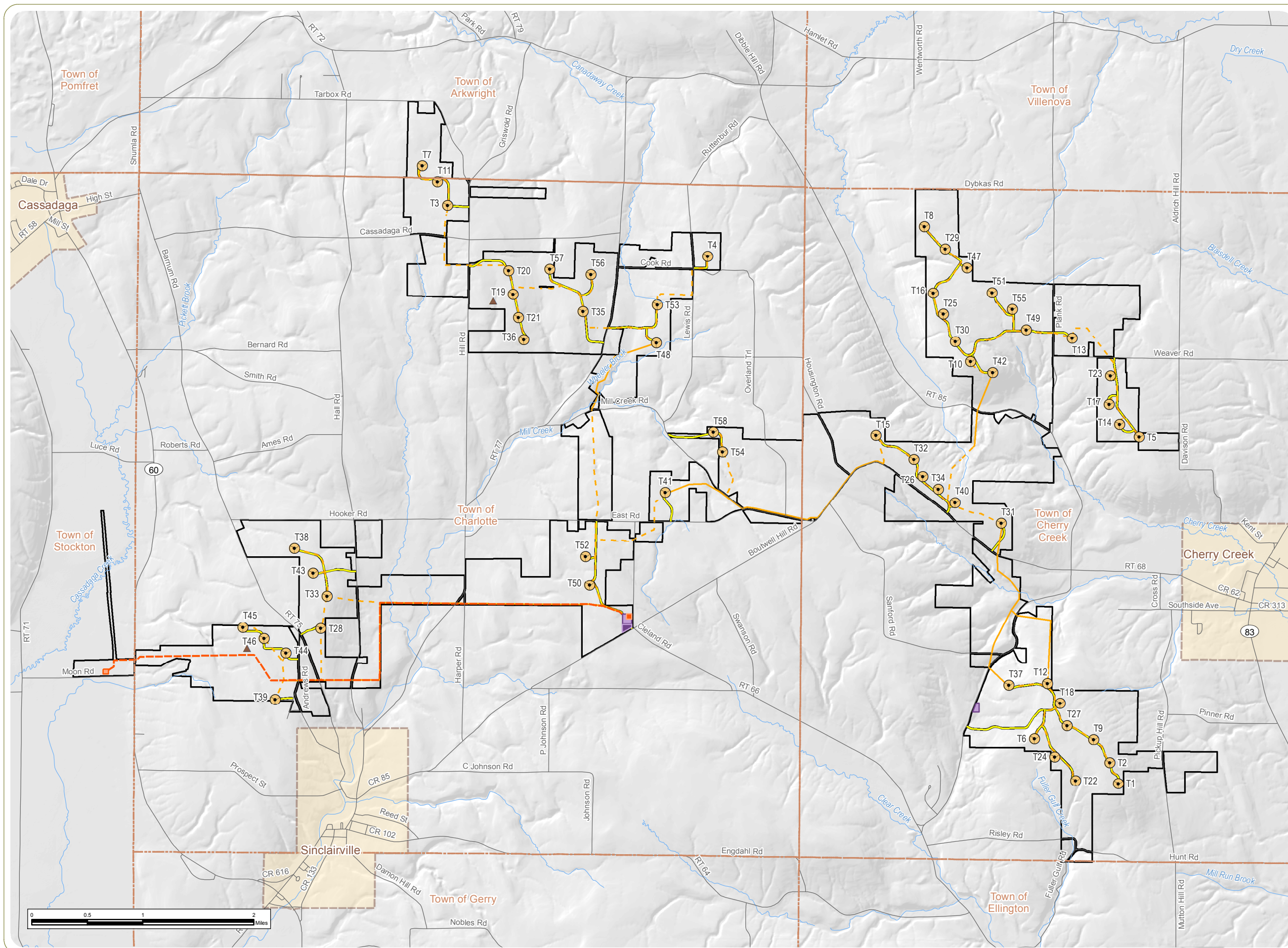


Cassadaga Wind Project

Towns of Arkwright, Charlotte, Cherry Creek, and Stockton - Chautauqua County, New York

Figure 1: Facility Site

May 2016

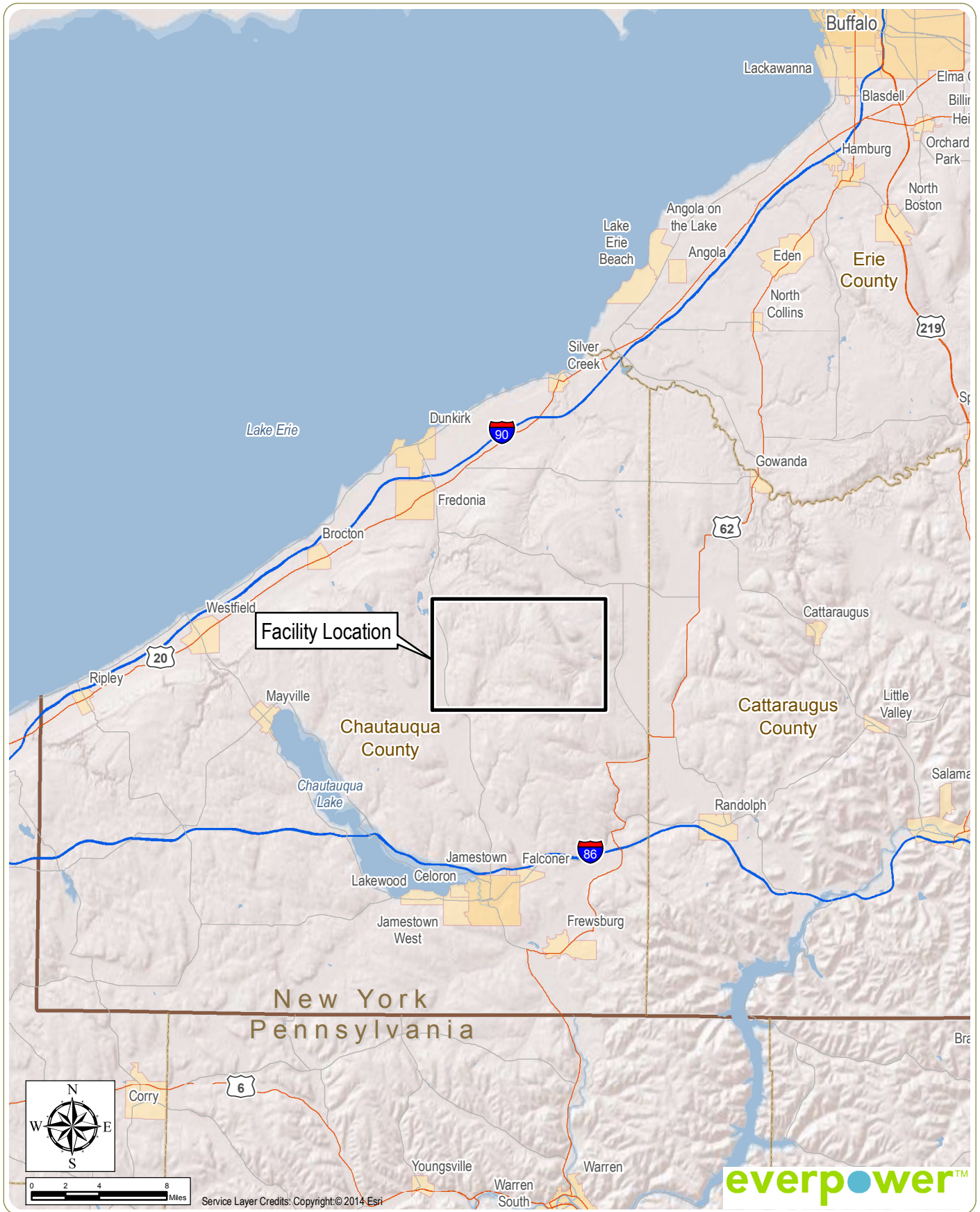


- Wind Turbine
- Permanent Meteorological Tower
- 115 kV Generator Lead Line
- Underground Collection Line
- Overhead Collection Line
- Access Road
- POI Substation
- Collection Substation
- O&M Building
- Laydown Yard/Staging Area
- Facility Site
- City/Village Boundary
- Town Boundary
- County Boundary

Notes:
 1. Basemap: Hillshade derived from USGS 10-meter resolution DEM data.
 2. This is a color graphic. Reproduction in grayscale may misrepresent the data.



www.edrdpc.com



Cassadaga Wind Project

Towns of Arkwright, Charlotte, Cherry Creek, and Stockton - Chautauqua County, New York

Figure 2: Regional Facility Location

May 2016

- Notes: 1. Basemap: ESRI ArcGIS Online "World Shaded Relief" Map Service and ESRI StreetMap North America, 2008.
- 2. This is a color graphic. Reproduction in grayscale may misrepresent the data.

