

TOWN OF ARKWRIGHT TOWN BOARD

Local Law No. 2 of 2016

A Local Law to Create a Wind Overlay Zone and Amending the Town Official Map

Be it Hereby Enacted by the Town board of the Town of Arkwright as follows:

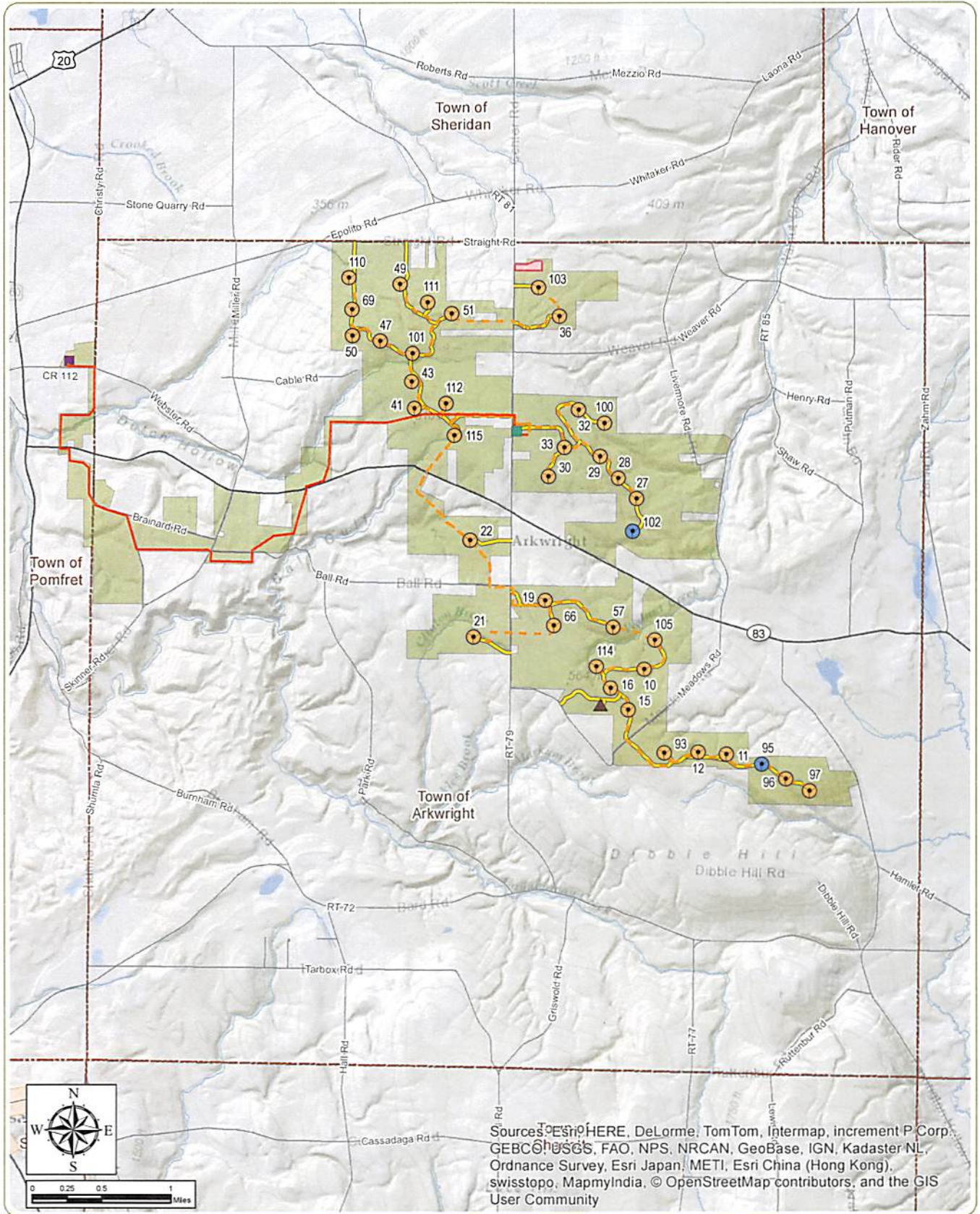
Section I:

A Wind Overlay Zone, pursuant to Town Code Section 656 , is hereby created to cover the area shown in the attached map, which is incorporated herein. Pursuant to Town Code Section 668(B), the Town Clerk shall modify the Official Map to reflect the creation of the Wind Overlay Zone

Section II:

This Local Law is effective upon filing with the Secretary of State pursuant to the Municipal Home Rule Law

PASSED AND ADOPTED BY THE TOWN OF ARKWRIGHT TOWN BOARD on the 25th day of January, 2015.



Sources: ESRI, HERE, DeLorme, TomTom, Intermap, increment P Corp, GEBCO, Swisstopo, FAO, NPS, NRCAN, GeoBase, IGN, Kadaster NL, Ordnance Survey, Esri Japan, METI, Esri China (Hong Kong), swisstopo, MapmyIndia, © OpenStreetMap contributors, and the GIS User Community

Arkwright Summit Wind Farm

Towns of Arkwright and Pomfret - Chautauqua County, New York

Exhibit 4: Proposed Project Layout and Wind Overlay Zone

October 2015

Notes: 1. Basemap: ESRI ArcGIS "World Topo" Map Service
2. This is a color graphic. Reproduction in grayscale may misrepresent the data.

- Wind Turbine
- Alternate Wind Turbine
- ▲ Met Tower
- Substation
- O&M Facility
- - - Buried Collection Line
- Generator Lead Line
- Access Road
- Laydown Yard
- Wind Overlay Zone
- - - Town Boundary

